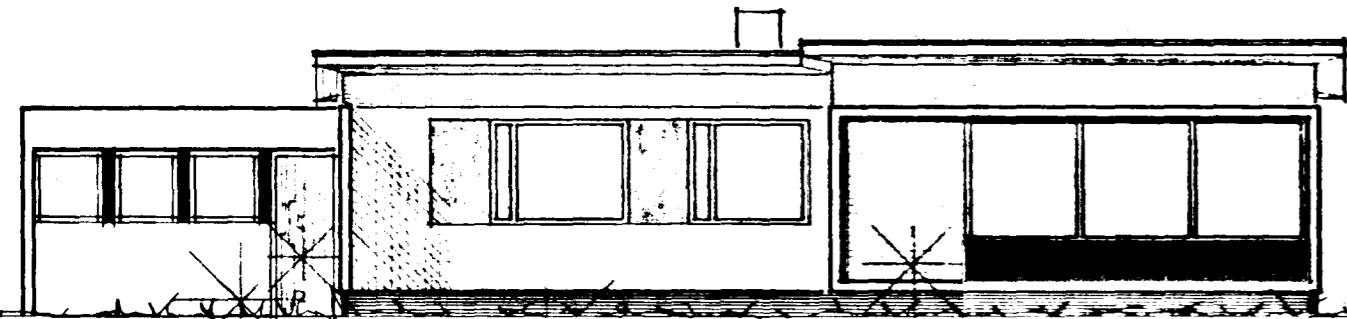


14/66

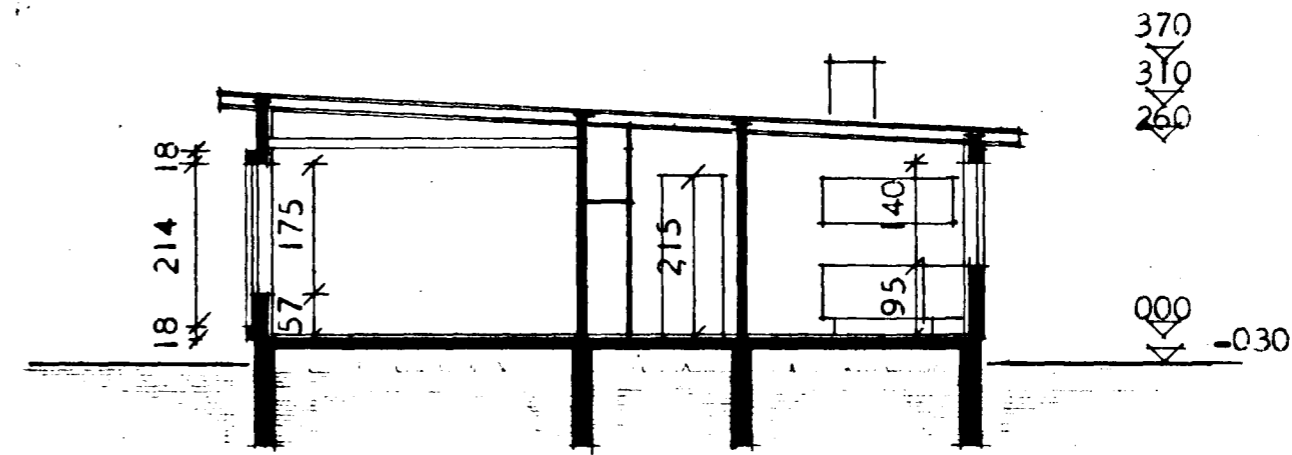
Þröðykkt á fundi bygginga-
ráðs p. 9.3. 1966

BYGGINGAFULLTRÚINN
Í HAFNARFIRÐI

Sigrún Ólafsdóttir



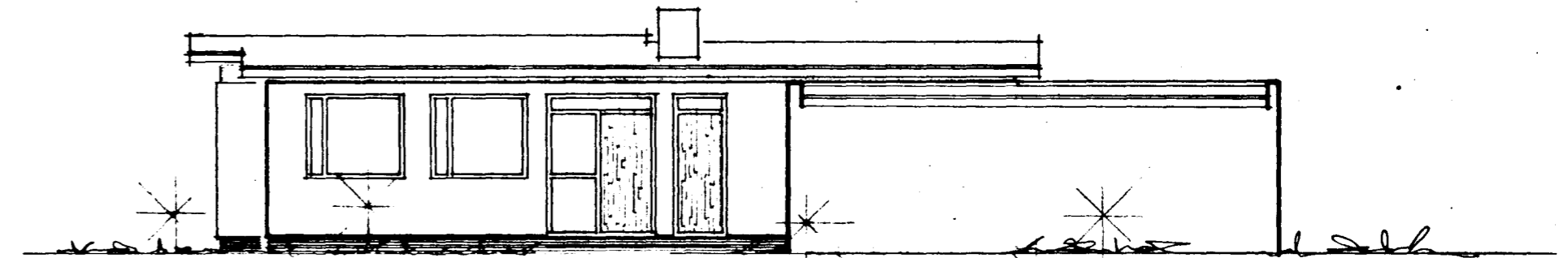
SUÐUR



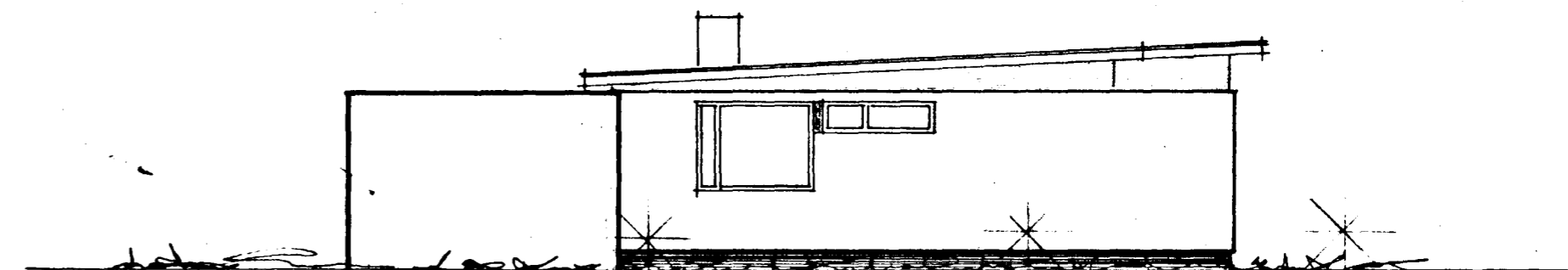
SNEIÐING

BRÚTTÓ FLATARMÁL HÚSS = 109,56 m²
NETTÓ FLATARMÁL HÚSS = 95,22 m²

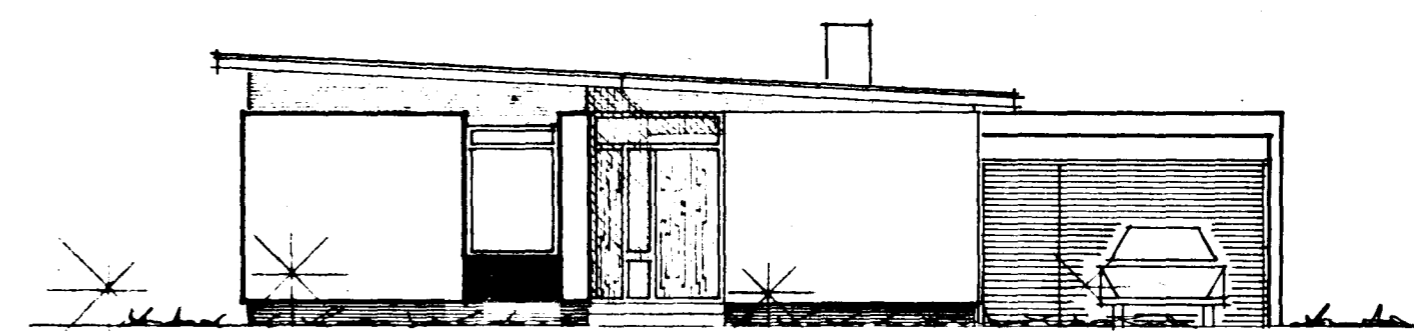
ATH. VEGGIR UMhverfis HITAKLEFA SKULU GERDIR ÚR
STEINI OG KLEFINN MÚRHÚÐAÐUR Í HÓLF OG GÓLF.



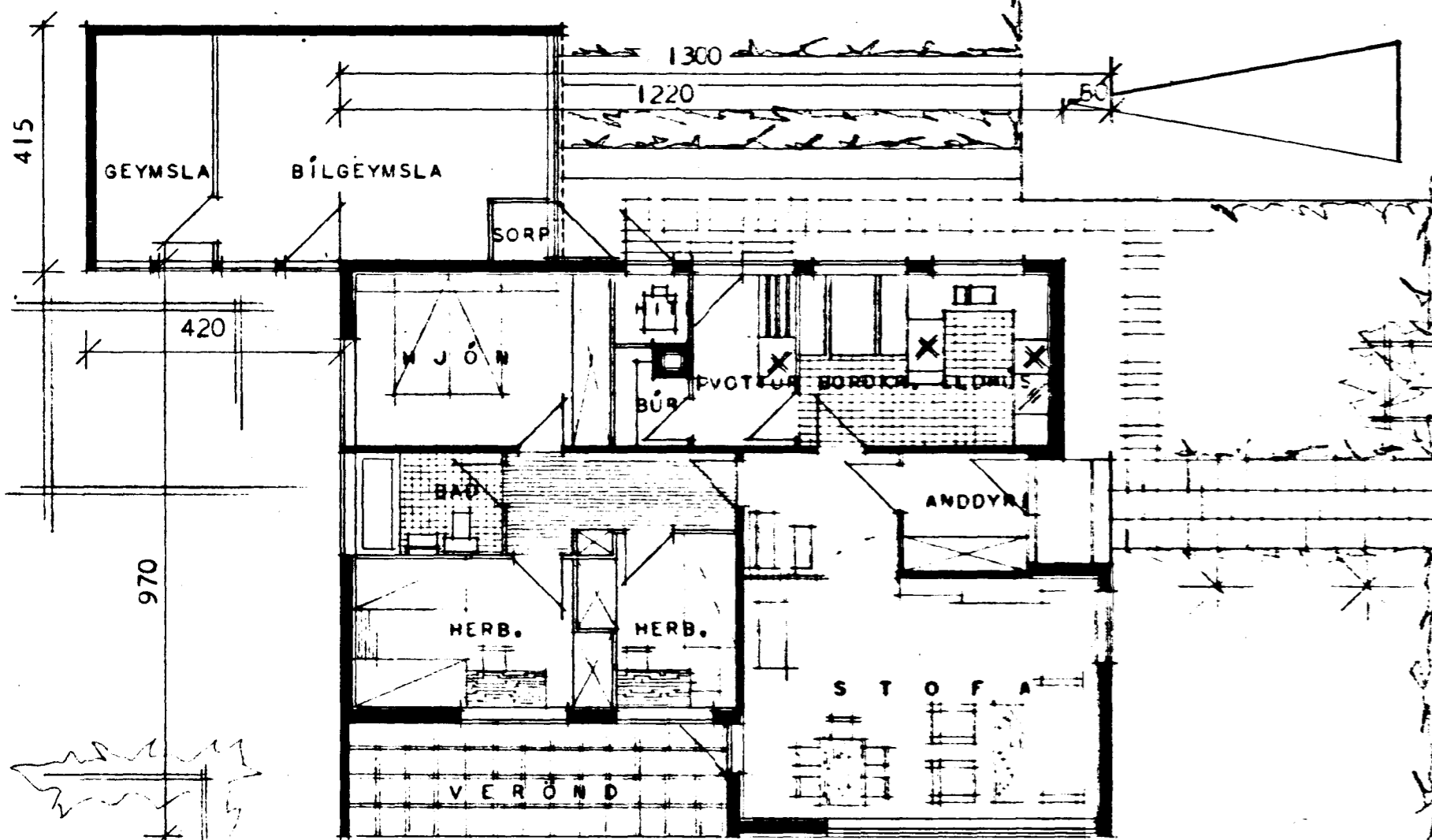
NORÐUR



VESTUR



AUSTUR



HÖSNÆÐISMÁLASTOFNUN RÍKISINS	
GRUNNMYND, ÚTLIT OG SNEIÐING MÁL 1:100	EINBYLISHÚS VERK 82 A BLAÐ NR 1 FEBR. 1966

14/666

Sigrún Ólafsdóttir