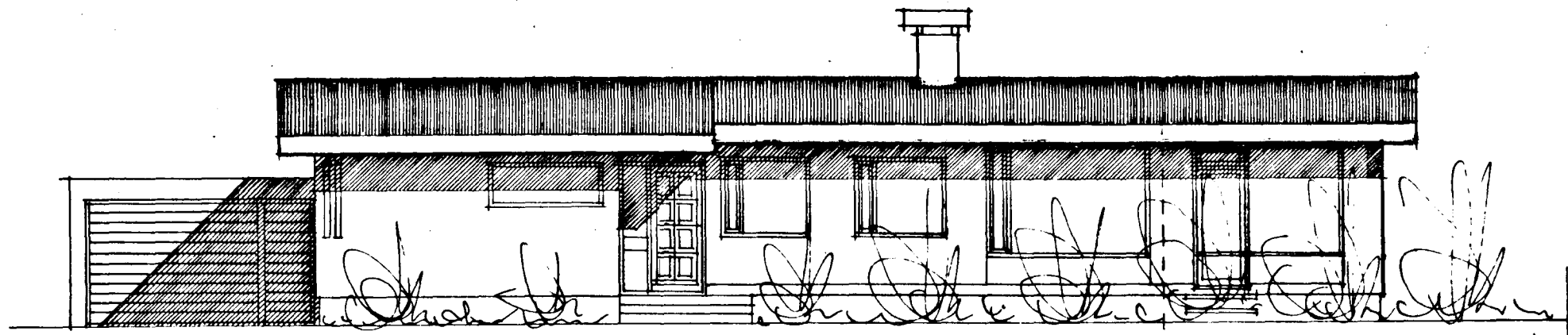
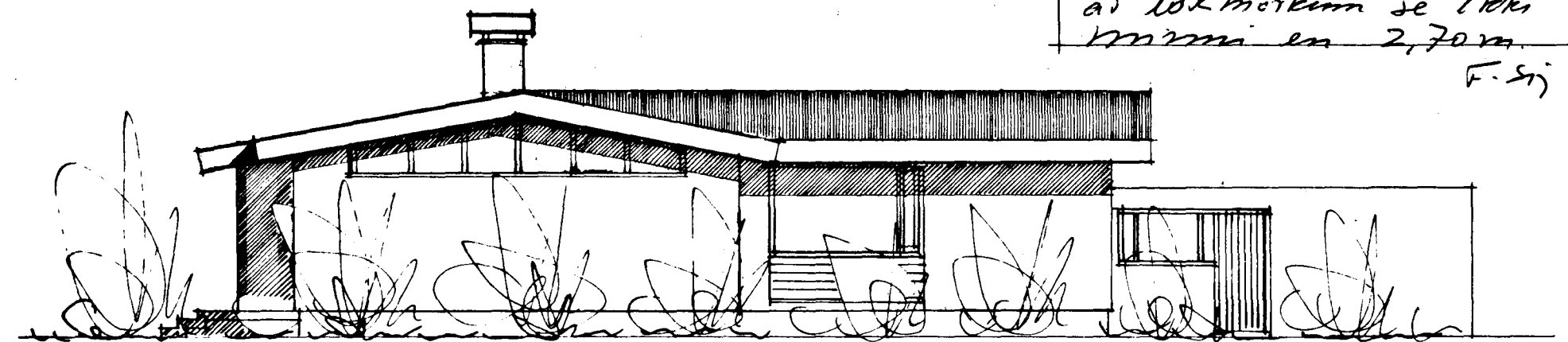


Sambykkt á fundi bygginga-
nefndar þ. 9.19.1981
BYGGINGAFULLTRÚÐIN
Í HAFNARFIRÐI
F. S.

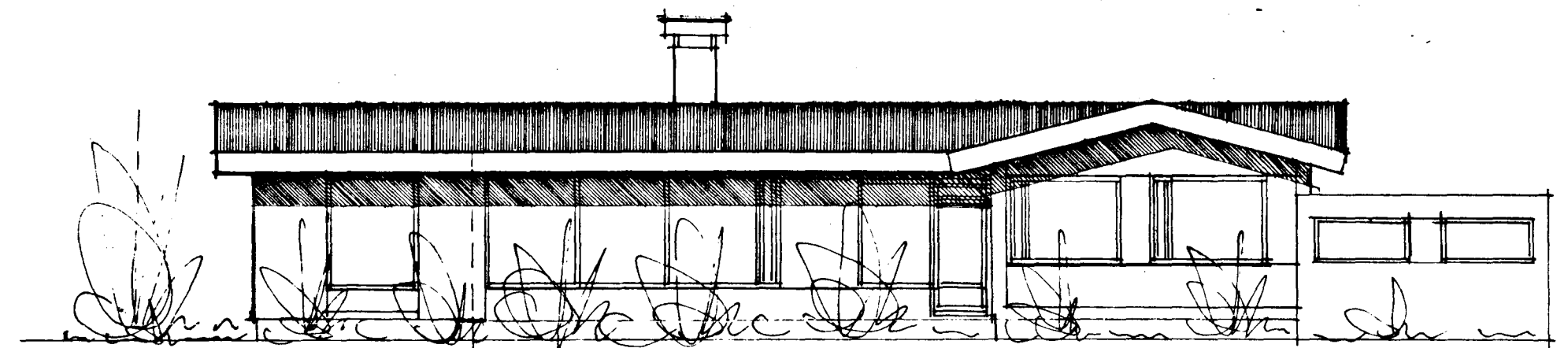
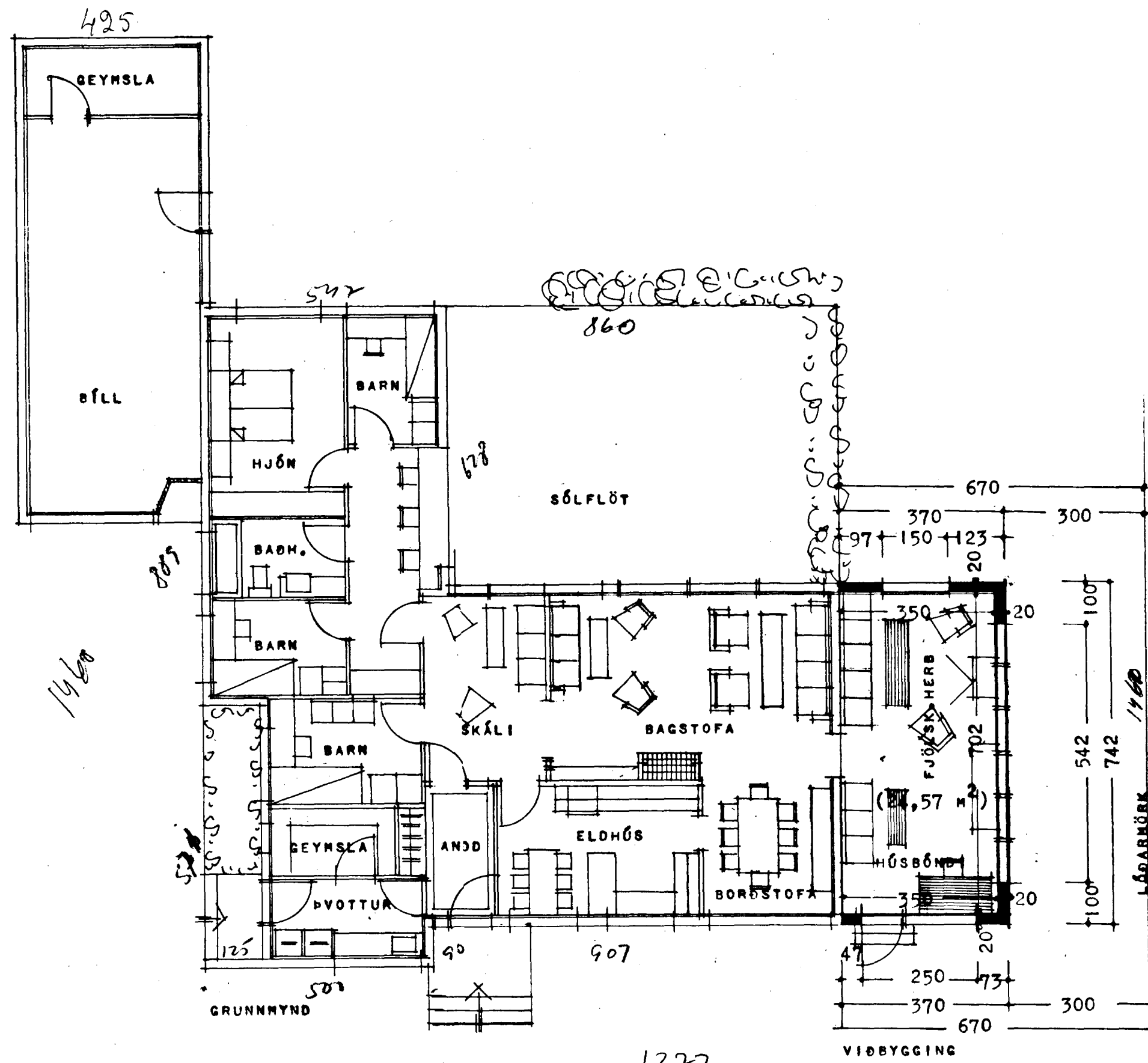
Áskilið að þarlagð þakkeggn
að ldkmörkun sé íbki
þessi en 2,70m
F.S.



NORÐUR



VESTUR

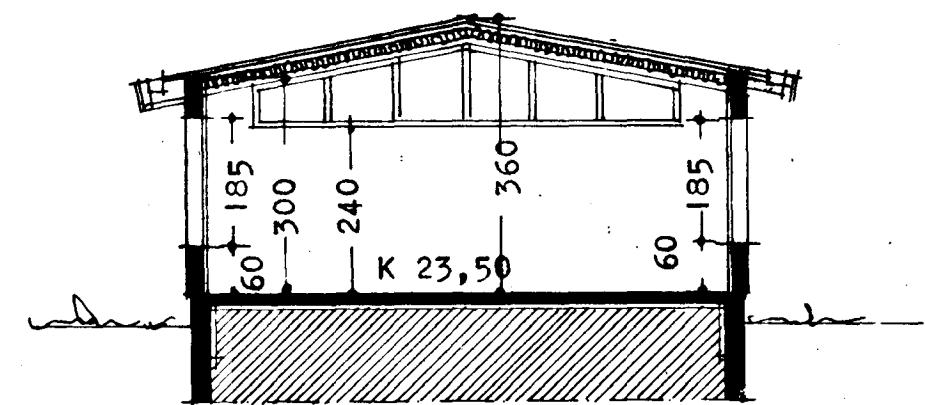


SUDUR

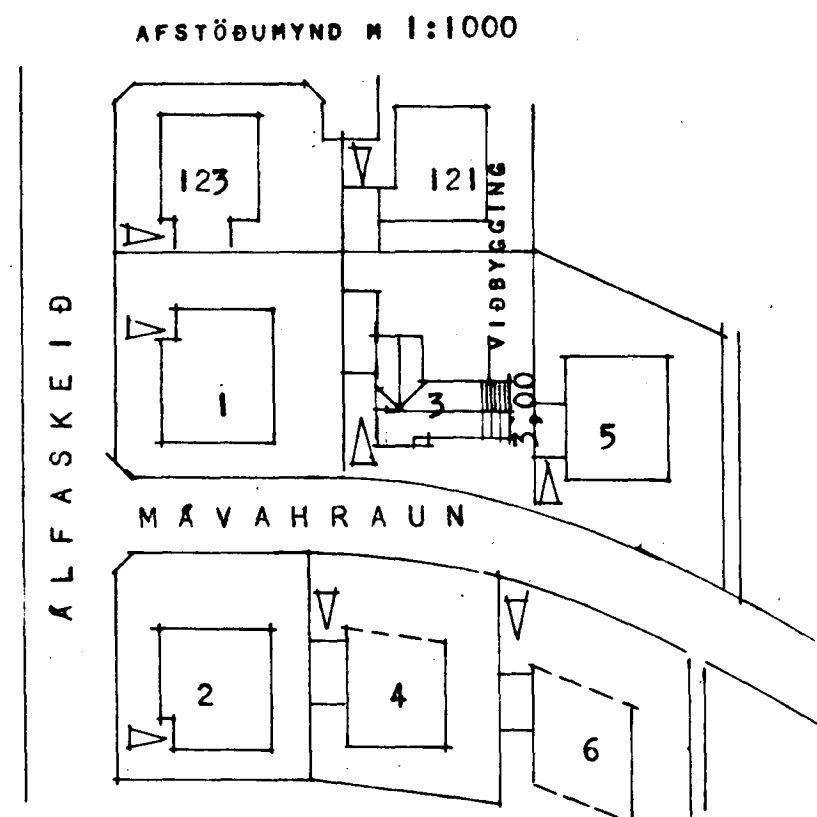
KÖLUNARTÖLUR

	0,95	m	m ²	°C
ÓTVEGGIR	0,95	—	—	—
ÞAK	0,30	—	—	—
GÖLF	0,40	—	—	—

LOFT SÉ EINANGRÐ MEÐ BELDNEMRI EINANGRUM



SKURÐUR Í VIÐBYGGINGU



FLATARMÁL VIÐBYGGINGAR	27,45 m ²	27,5 m ²
RÚMMÁL VIÐBYGGINGAR	90,58 m ³	91 m ³

5970 - 0030 01

BREYTT Í SEPTEMBER 1981

F. S.