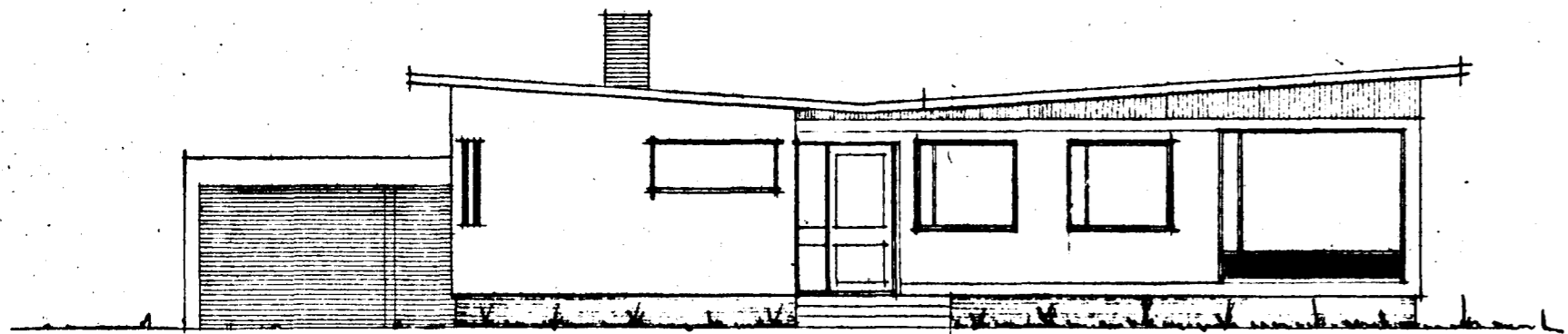
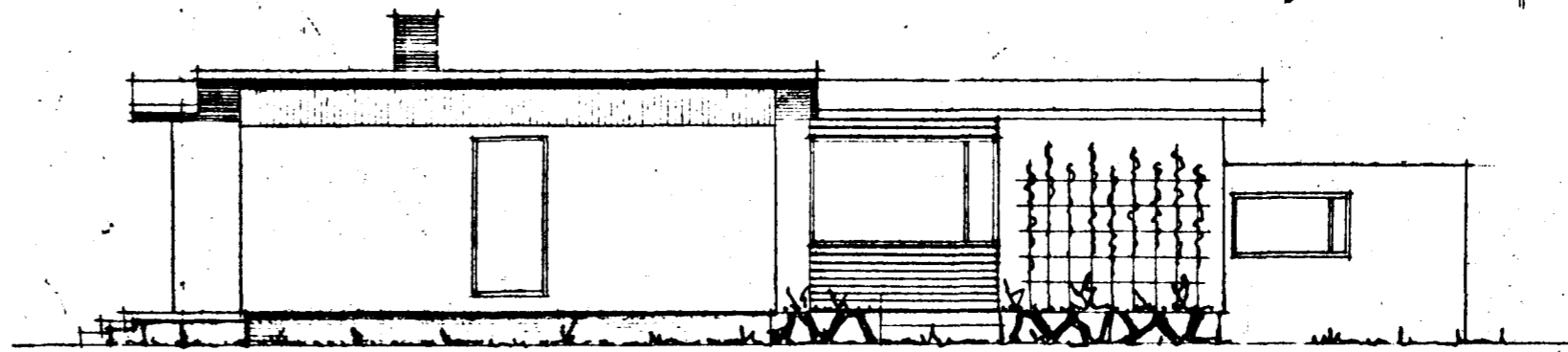


15/66

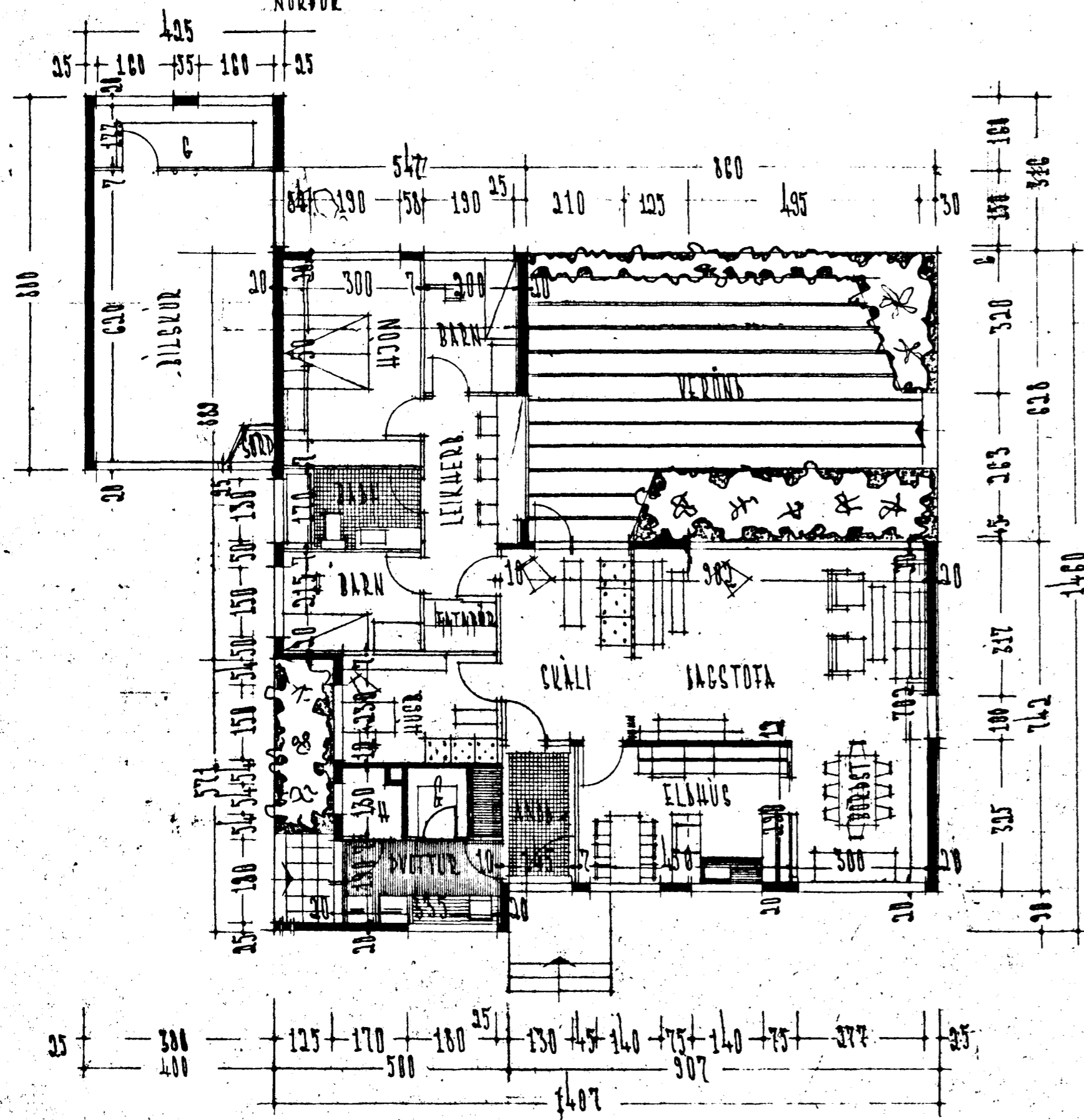
Samþykkt á fundi bygginga-
nefndar þ. 7. 12. 1966
BYGGINGAVALTRÚINN
I HAFNARFIRSI
Sigurður Ólafsson



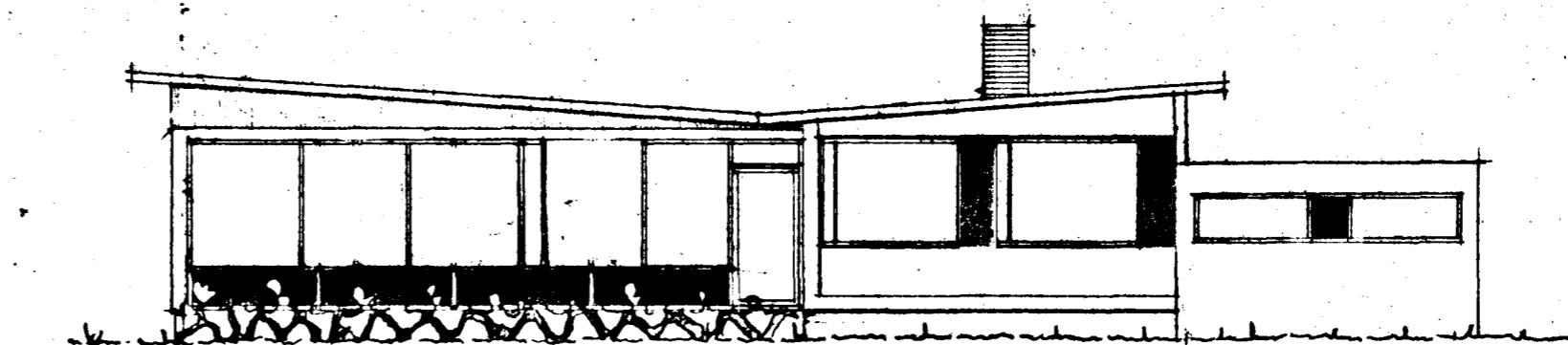
NORÐUR



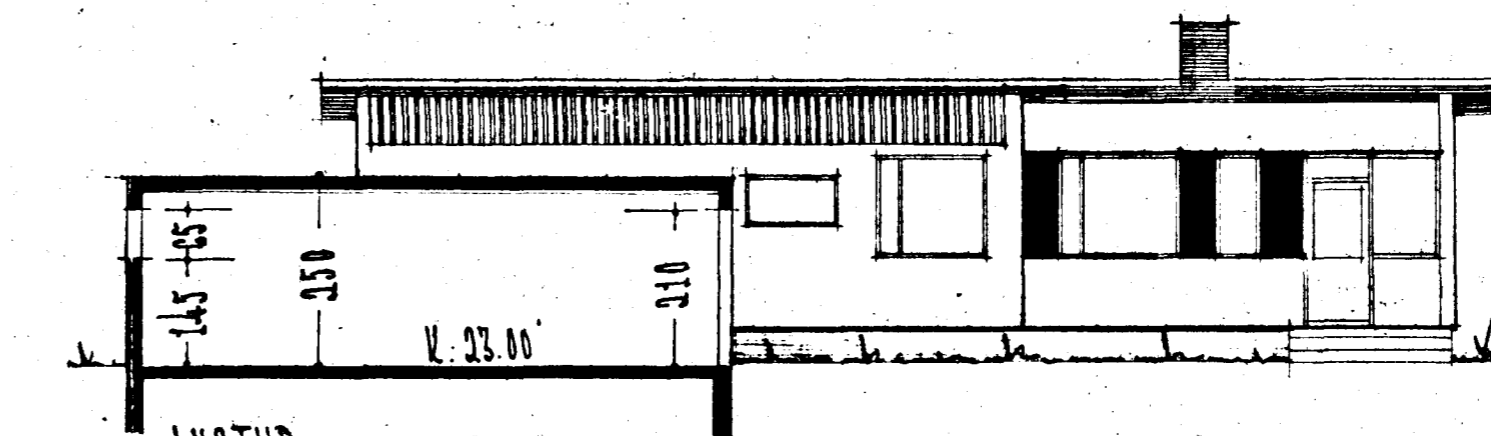
VESTUR



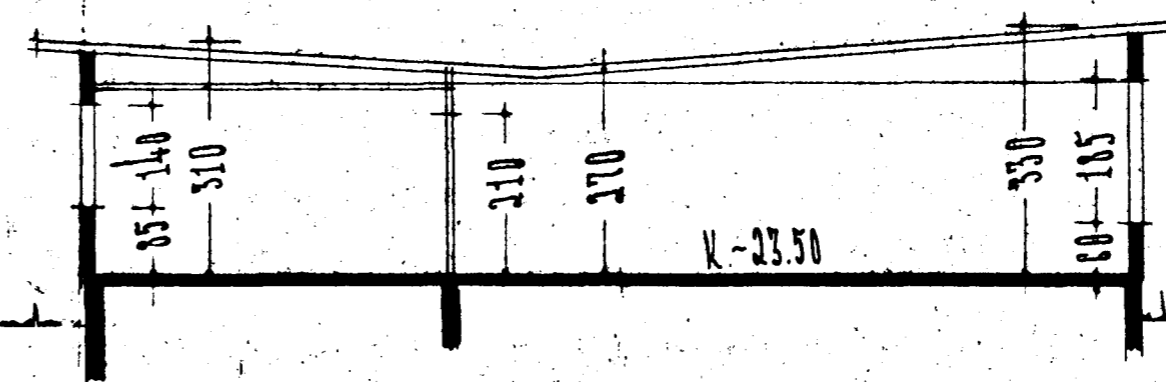
GRUNNMYN



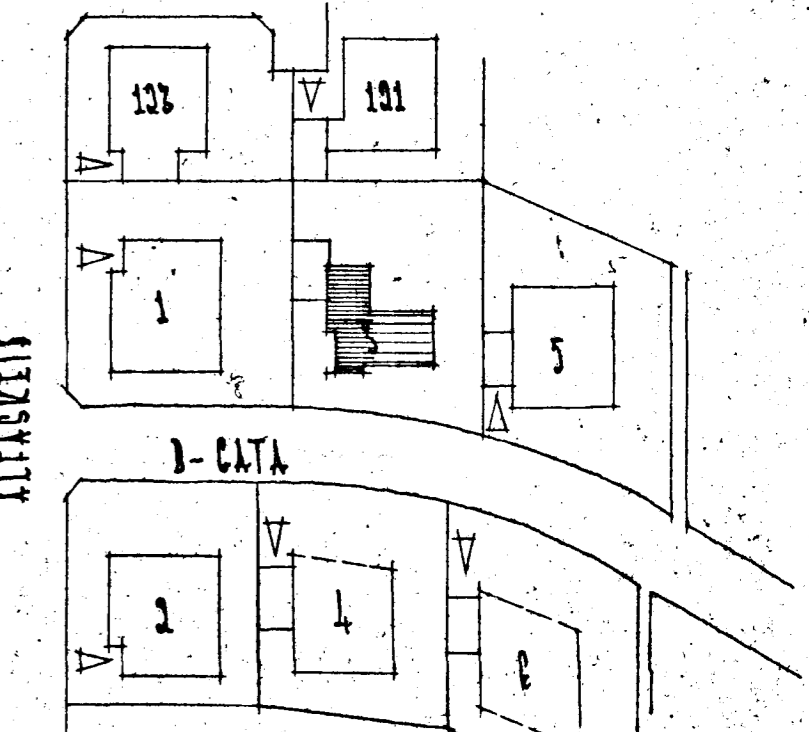
AUSTUR



SKURÐUR



FLATARMÁL HÚSS 136.12 M²
IAGSTÓÐMYN M. 1:1000



REYKJAVÍK 1. JAN. 1966
Sigurður Ólafsson 15/66