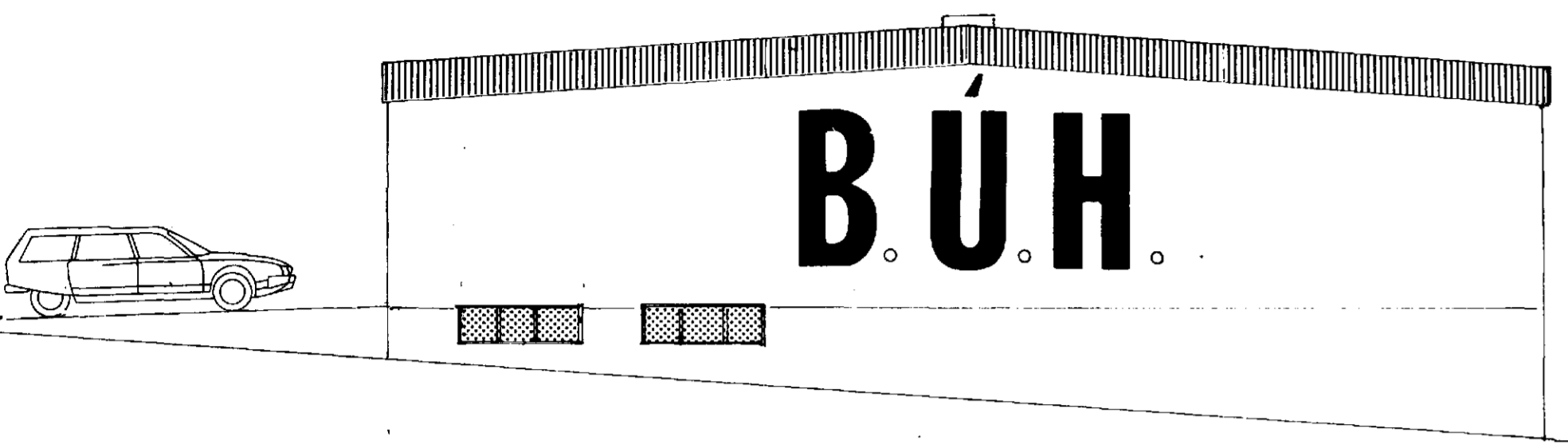


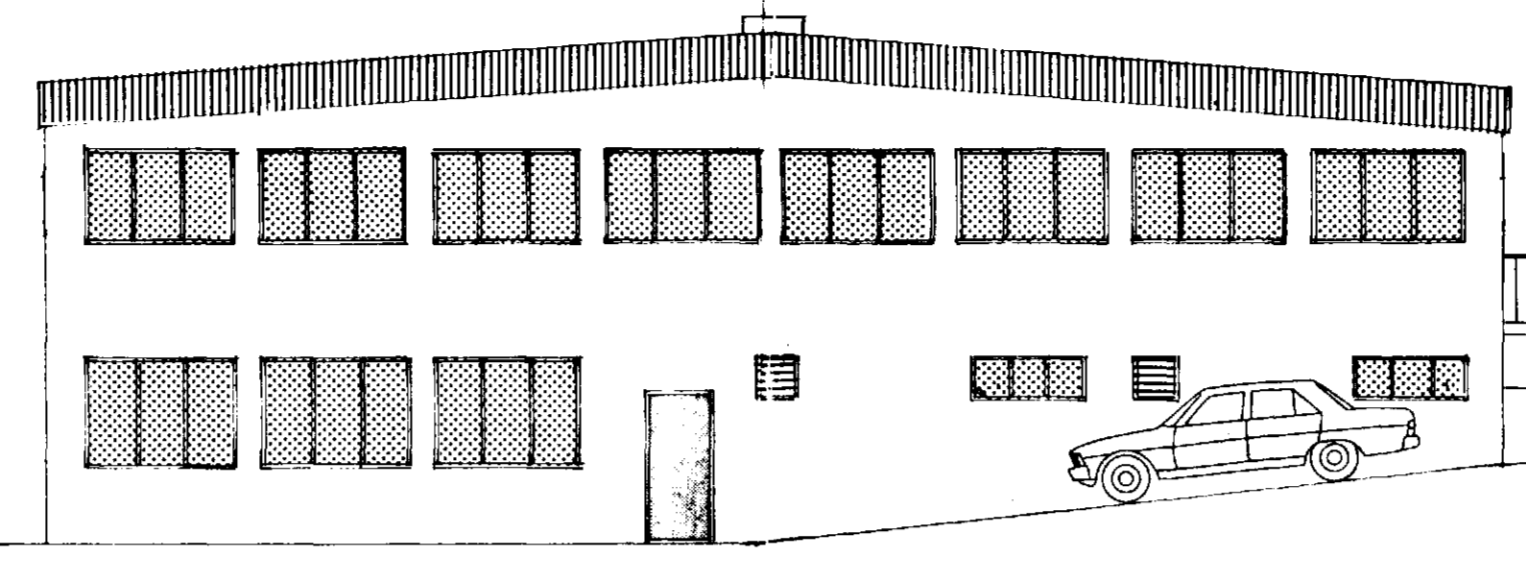
Ár 1988 er samþykkt
Lög nr. 91/1988

Samþykkt á fundi bygginga-
nefndar þ. 9.1.19.88
BYGGINGAFULLTRÚINN
Í HAFNARFIRDI
[Signature]

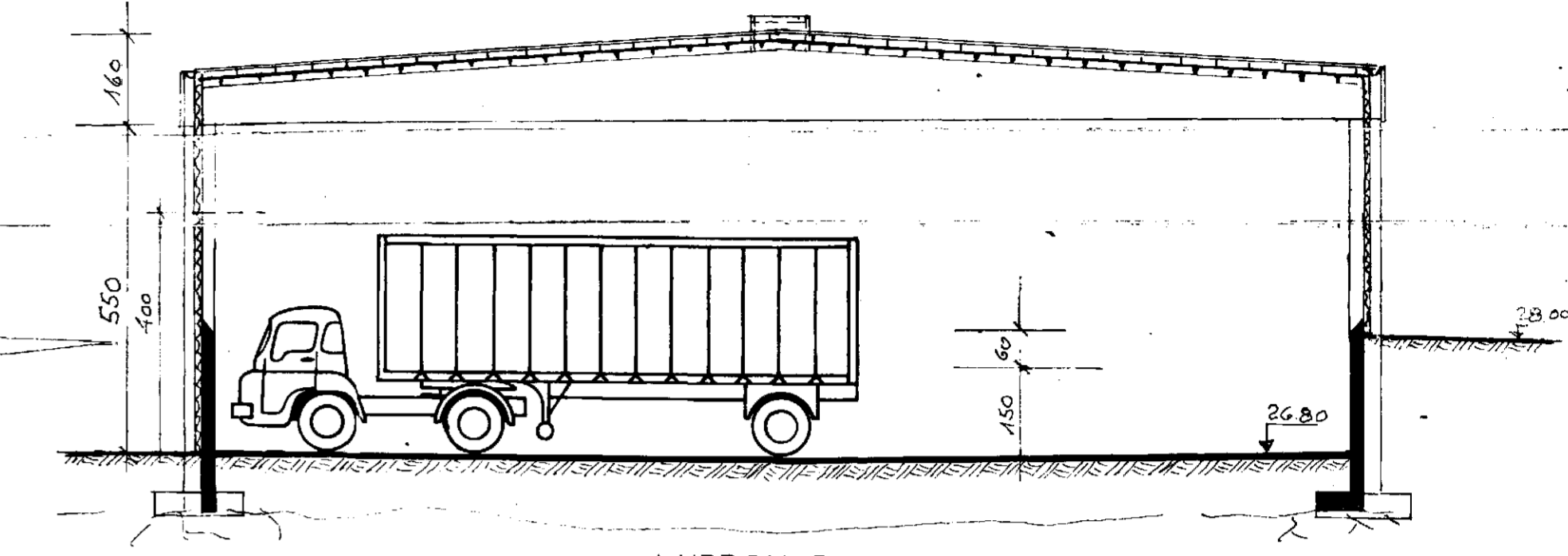
Ár 1988 er samþykkt
Lög nr. 91/1988



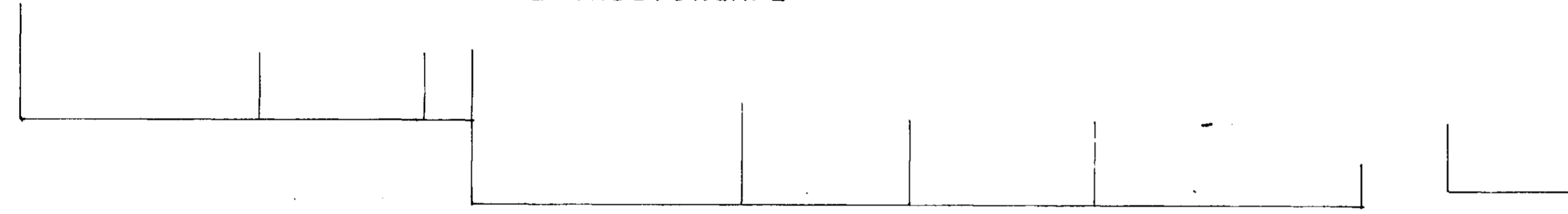
SUDAVESTURGAFL



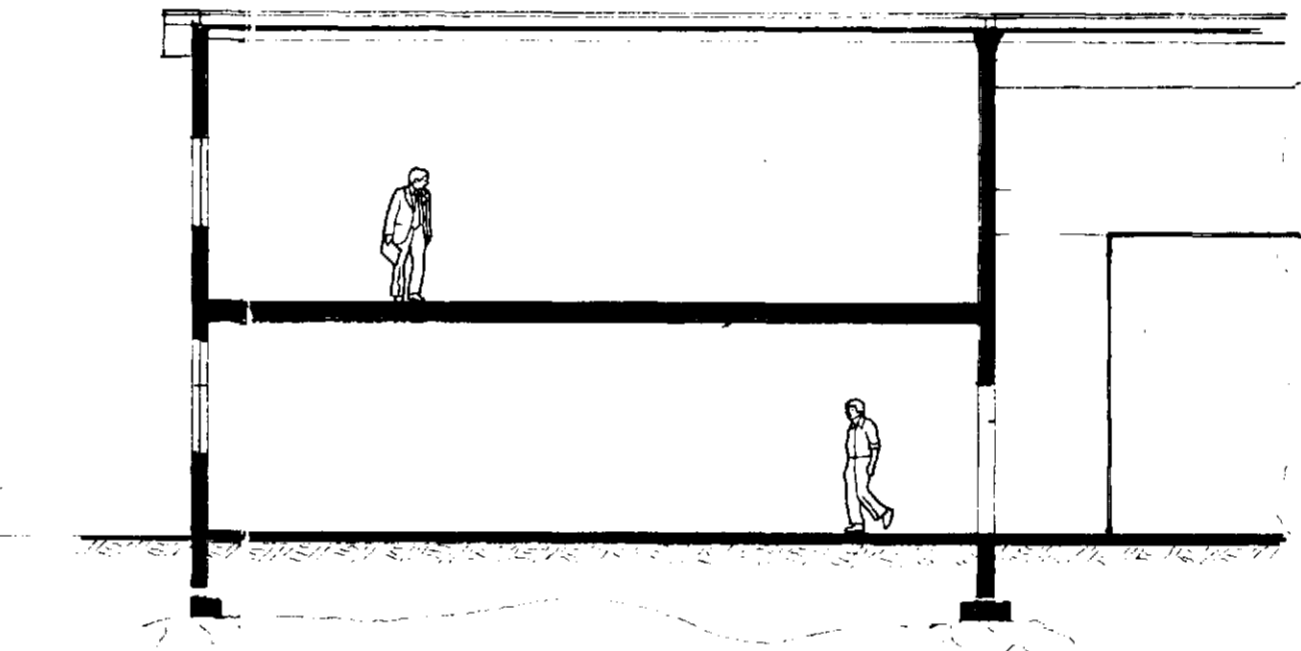
SUDAVESTURGAFL



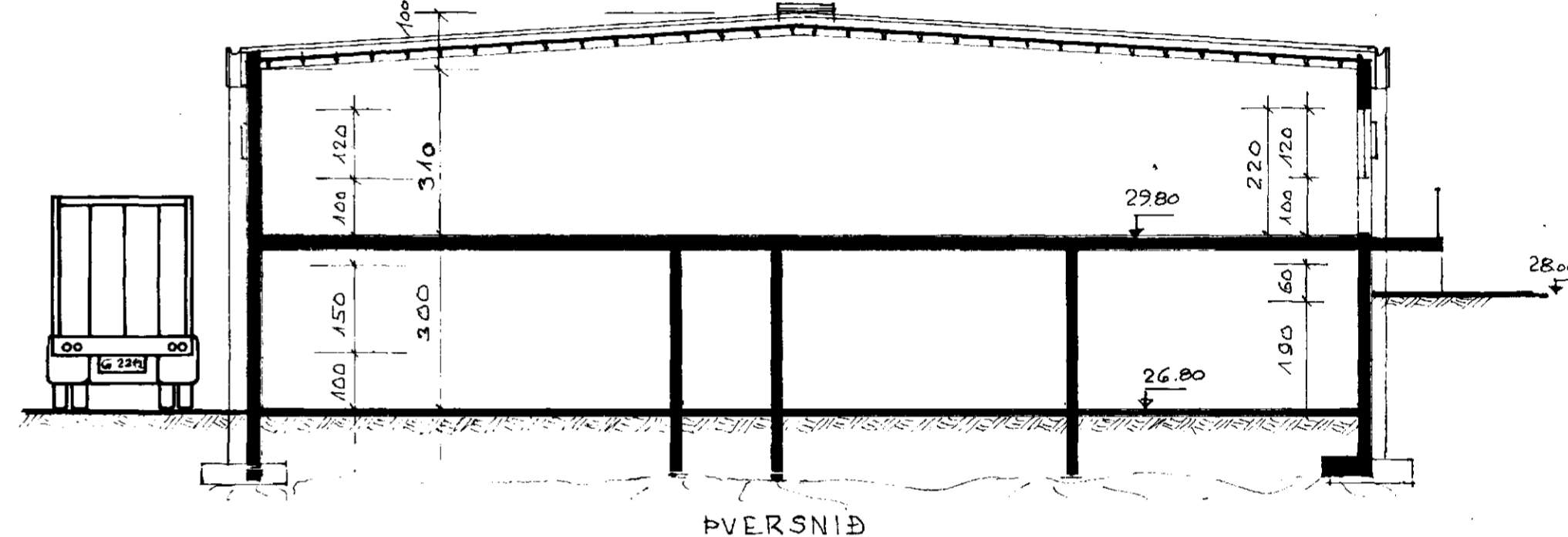
PVERSNID



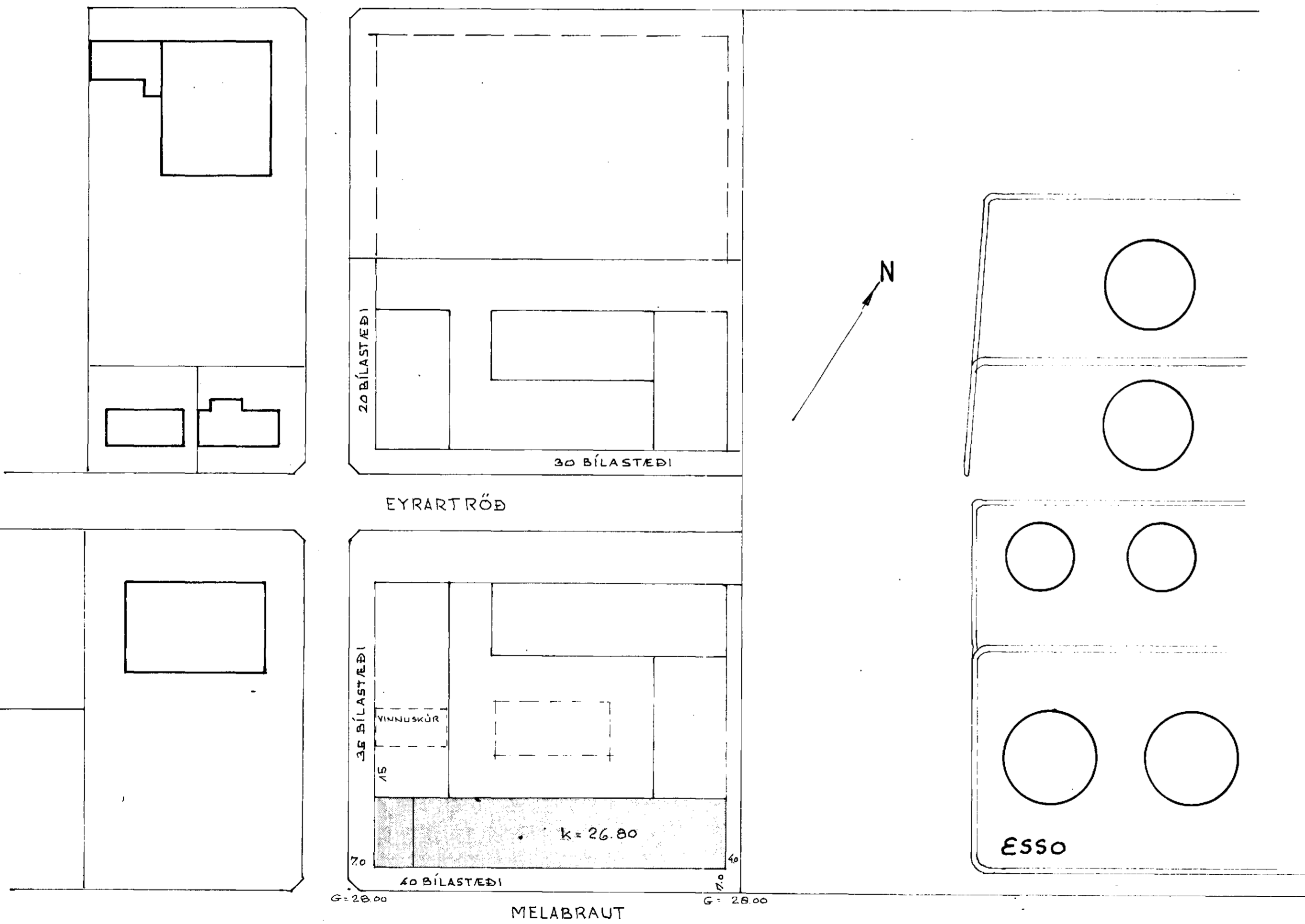
HVALEYRARBRAUT



LANGSNID



PVERSNID

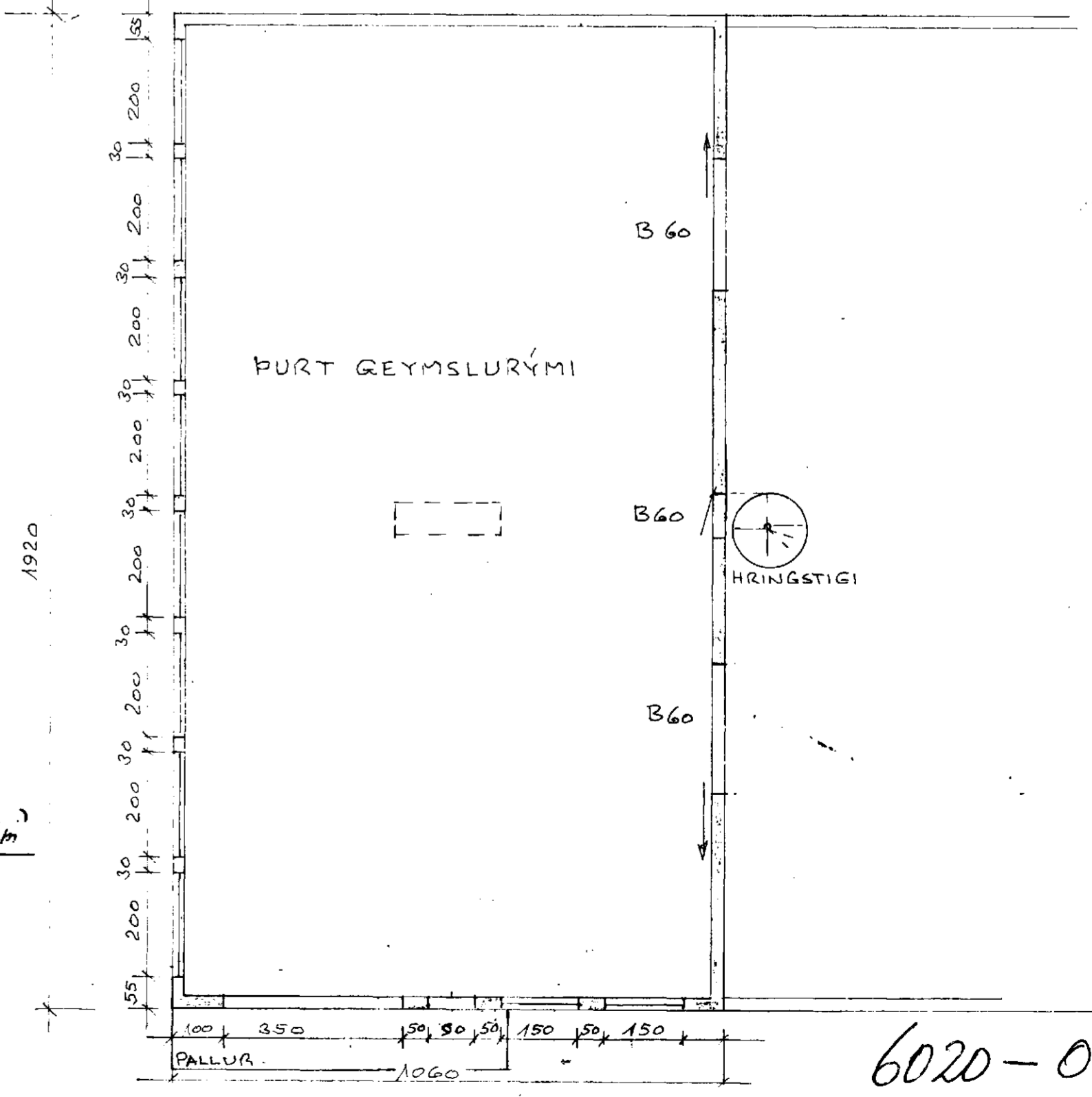


LOÐ: MELABRAUT 10800 m²
EYRARTRÖÐ 6480 m²

HÚS: TVEGGJA HÉÐA 203 m² 1381 m³
VINNUSALIR 31.553: 1659 m² 11114 m³

$1 \text{ hól: } 1920 \times 970 = 1.862,4 \text{ m}^2 \times 6.7 = 12.471 \text{ m}^2$

$\text{málþjálfi } 1920 \times 10.6 = 203,5 \text{ m}^2$
 $\frac{203,5 \text{ m}^2}{0.77} = 265,9 \text{ m}^2$



GRUNNMYND 2. HÉÐ

AFSTÖÐUMYND
1:1000

6020-0180-01

YS	HÆKKUN X HÚSI	AG'81
DÆS	BREYTING	GJÓRT
HANNA SS	JON BERGSSON DIR. ING. MBFR. MWFI	SLAB 5
TEKNA SS	BEJÁTGERD HAFNARFJ. MELABRAUT	1:100 JÚL'81