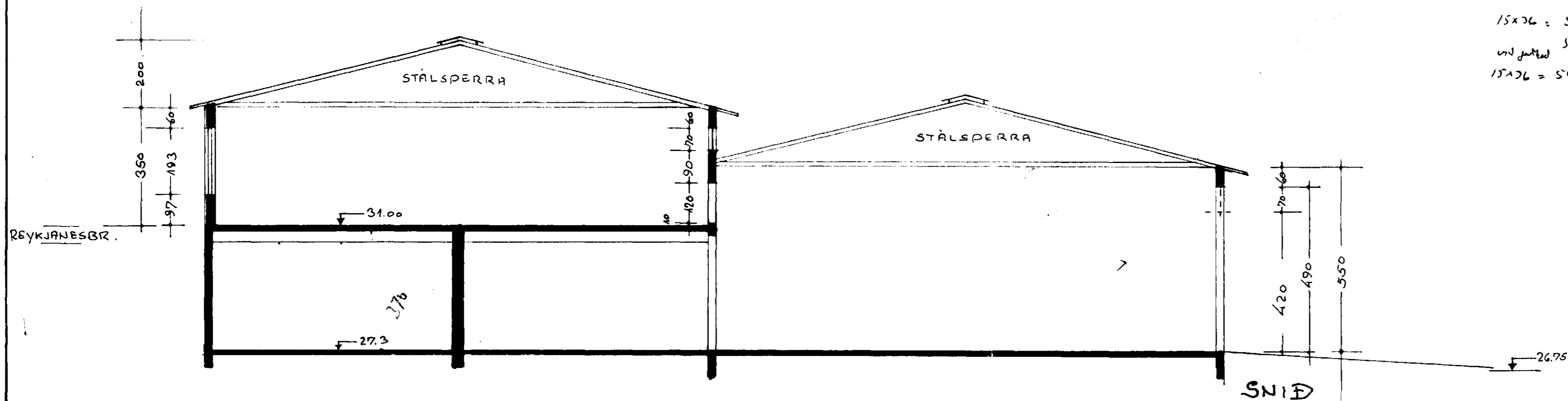
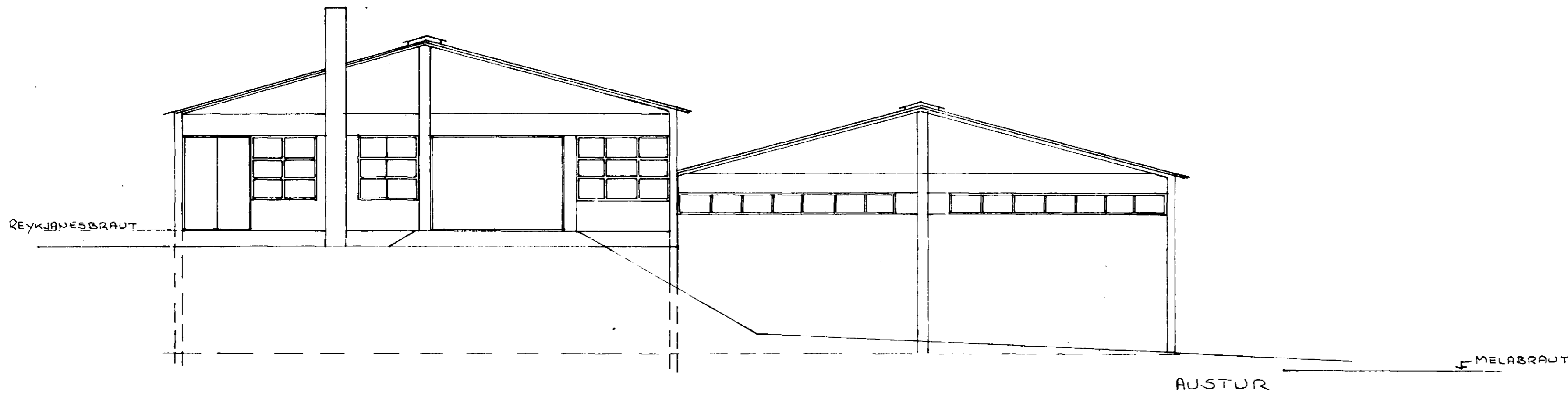
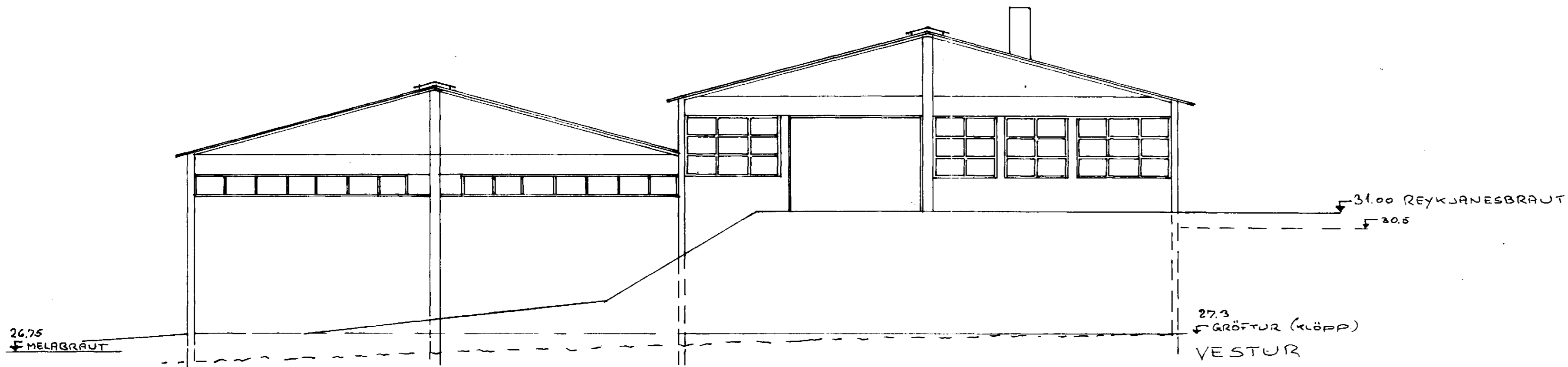


Sambýkt á fundi bygginga-
nefndar þ. 23/9 1964

BYGGINGAUFURÐUNN
I HAFNARÁRDI

Jón Berg



$$\begin{aligned}
 15 \times 26 &= 540 \text{ m}^2 \times 3.30 = 1998 \text{ m}^3 \\
 \text{v.d. j. m. v.} & 540 \text{ m}^2 \times 3.30 = 2420 \text{ m}^3 \quad 4928 \text{ m}^3 \\
 & 15 \text{ m} \times 38 \text{ m} = 570 \text{ m}^2 \\
 15 \times 26 &= 540 \text{ m}^2 \times 6.50 = 3510 \text{ m}^3 \\
 & \quad \quad \quad 570 \text{ m}^2 \\
 & \quad \quad \quad \hline
 & \quad \quad \quad 7995 \text{ m}^3
 \end{aligned}$$

DAG:	23/9 1964
BYGGINGAUFURÐUNN:	JÓN BERGSSON
LIKNAD:	HRINGNÖT H/F
STUÐ:	VIÐ MELABRAUT 19
ÚTLIT:	N. 100
	SEPT 64