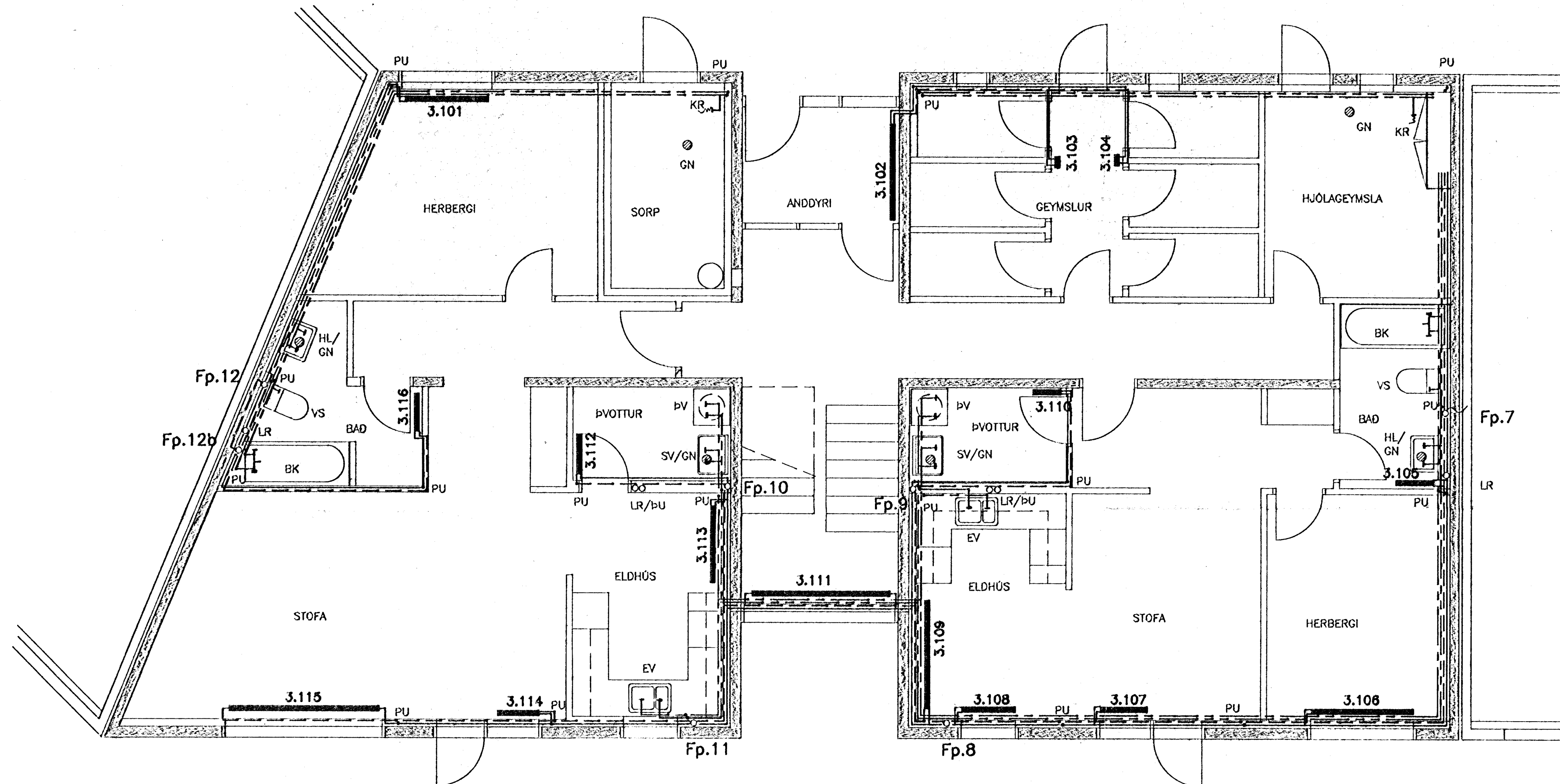
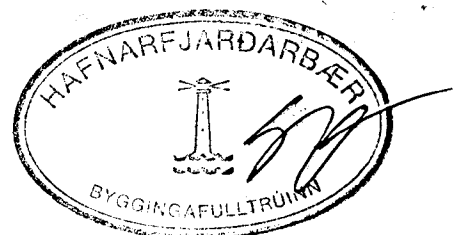


GRUNNMYND 1:50

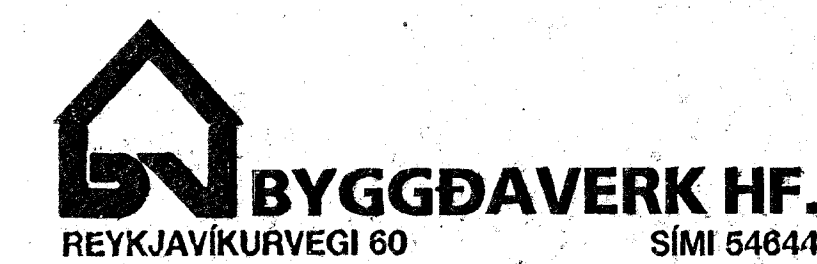


OFNASKRÁ

NR OFNS	HEITI	RBINNAD VARMATAP W	HAMARKS LENGD mm	HAMARKS HÆÐ mm	VALDIR OFNAR	STUÐAR 10 mm
3.101	HERBERGI	970	1.400	600 K 600 x 1440	AB	
3.102	ANDDYRI	900	1.600	600 K 500 x 1440	AB	
3.103	GEYMSLUR	1.100	300	1.900 K 300 x 1440	AB	
3.104	GEYMSLUR		300	1.900 K 300 x 1440	CD	
3.105	BAD	400	1.000	600 K 600 x 640	AB	
3.106	HERBERGI	860	1.600	600 K 600 x 1280	CD	
3.107	STOFA	1.400	700	210 VK+C-21, L=700*	CD	
3.108	STOFA		800	600 KK 600 x 800	CD	
3.109	ELDHUS	1.050	1.800	600 K 500 x 1760	AB	
3.110	PVOTTUR	280	900	600 K 500 x 480	CD	
3.111	STIÖGANGUR	2.400	2.400	400 KK 400 x 2400	AD	
3.112	PVOTTUR	280	900	600 K 500 x 480	AB	
3.113	ELDHUS	1.050	1.200	600 KK 400 x 1280	AB	
3.114	STOFA	2.200	1.000	210 VK+C-21, L=700*	AB	
3.115	STOFA		2.500	210 VK+C-21, L=2400*	AD	
3.116	BAD	480	1.000	600 K 600 x 640	CD	
1. HÆÐ ALLS		13.370				
2. HÆÐ						
3.201	HERBERGI	590	1.400	600 K 600 x 800	CD	
3.202	HERBERGI	1.050	1.400	600 K 600 x 1440	CD	
3.203	HERBERGI	970	1.400	600 K 600 x 1440	CD	
3.204	HERBERGI	660	1.400	600 K 600 x 960	CD	
3.205	HERBERGI	970	1.400	600 K 600 x 1440	CD	
3.206	BAD	400	1.000	600 K 600 x 640	AB	
3.207	STOFA	2.100	2.500	210 VK+C-21, L=2400*	BC	
3.208	STOFA		1.000	210 VK+C-21, L=700*	CD	
3.209	ELDHUS	920	1.200	600 K 600 x 1280	CD	
3.210	PVOTTUR	280	900	600 K 500 x 480	CD	
3.211	STIÖGANGUR	2.400	2.400	400 KK 400 x 2400	AD	
3.212	PVOTTUR	280	900	600 K 500 x 480	AB	
3.213	ELDHUS	920	1.200	600 K 600 x 1280	AB	
3.214	STOFA	2.200	1.000	210 VK+C-21, L=700*	AB	
3.215	STOFA		2.500	210 VK+C-21, L=2400*	AD	
3.216	BAD	430	1.000	600 K 600 x 640	CD	
2. HÆÐ ALLS		14.170				
3. HÆÐ						
3.301	HERBERGI	890	1.400	600 K 600 x 1280	CD	
3.302	HERBERGI	1.000	1.400	600 K 600 x 1440	CD	
3.303	HERBERGI	940	1.400	600 K 600 x 1440	CD	
3.304	HERBERGI	650	1.400	600 K 600 x 960	CD	
3.305	HERBERGI	880	1.400	600 K 600 x 1280	CD	
3.306	BAD	670	1.000	600 K 600 x 960	AB	
3.307	STOFA	2.400	2.500	210 VK+C-21, L=2500*	BC	
3.308	STOFA		1.000	210 VK+C-21, L=1000*	AB	
3.309	ELDHUS	1.080	1.200	600 KK 400 x 1280	CD	
3.310	PVOTTUR	280	900	600 KK 500 x 480	CD	
3.311	PVOTTUR	280	900	600 KK 500 x 480	AB	
3.312	ELDHUS	1.050	1.200	600 KK 400 x 1280	AB	
3.313	STOFA	2.500	1.000	210 VK+C-21, L=1000*	AB	
3.314	STOFA		2.500	210 VK+C-21, L=2500*	AD	
3.315	BAD	670	1.000	600 K 600 x 960	CD	
3. HÆÐ ALLS		13.300				
MIDHOLT 3, VARMADÖRF ALLS		40.840				



04 NOV 1991



MIDHOLT 3, HAFNARFIRÐI				SKV:
PRIFA- OG HITLAGNIR				1:50
GRUNNMYND 1. HÆÐ				VERK.NR.
Verkfræðistofa Stefáns og Björns s.f. CONSULTING ENGINEERS				90.39
REIKN BG	TEKNI GRT	YFIRSP	BL.NR.	L 6
DAGS 24.01.91	BYGGINGAUFVALTUNIR			