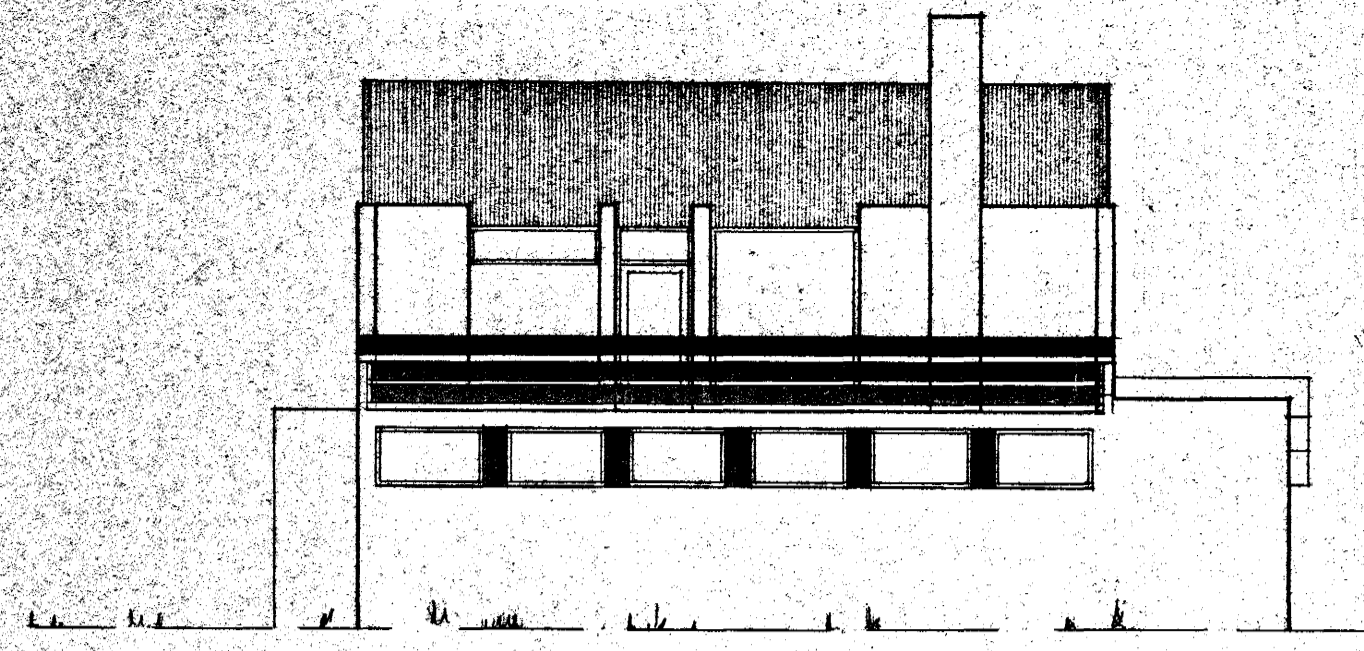
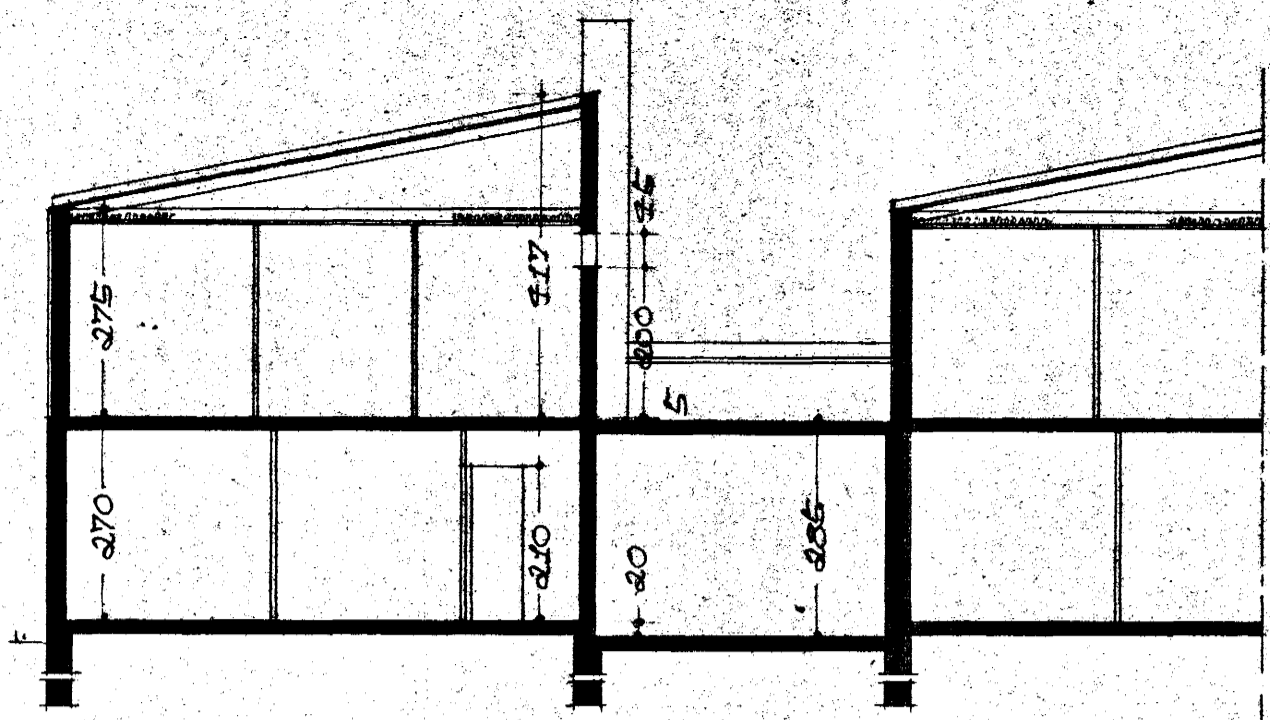


*Veggur á milli
bílgaðna og ígjafna
veði eldvann og hurð
í honum gálflokandi
eldvannakvæ.*

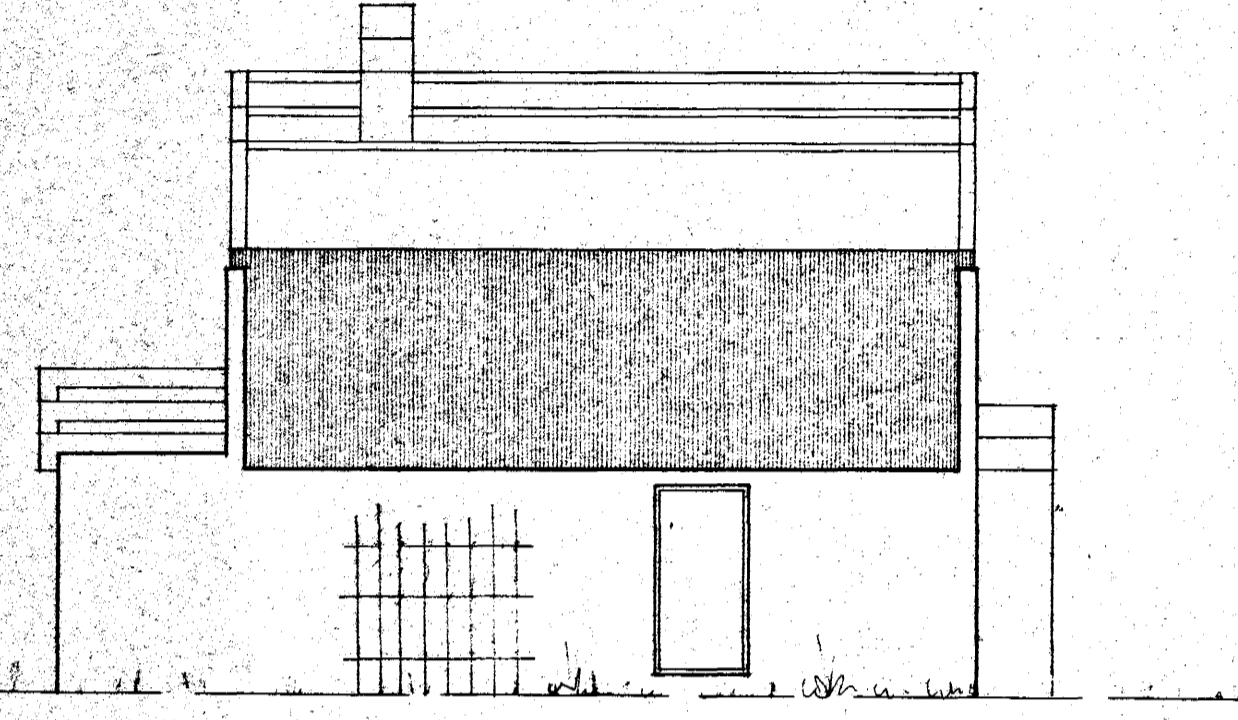
Gambykkt á fundi bygginga-
nefndar þ. 26. 1. 1972
BYGGINGAFULLTRÉUNNI
Í HAFNAFIRDI
S. Sveinsson



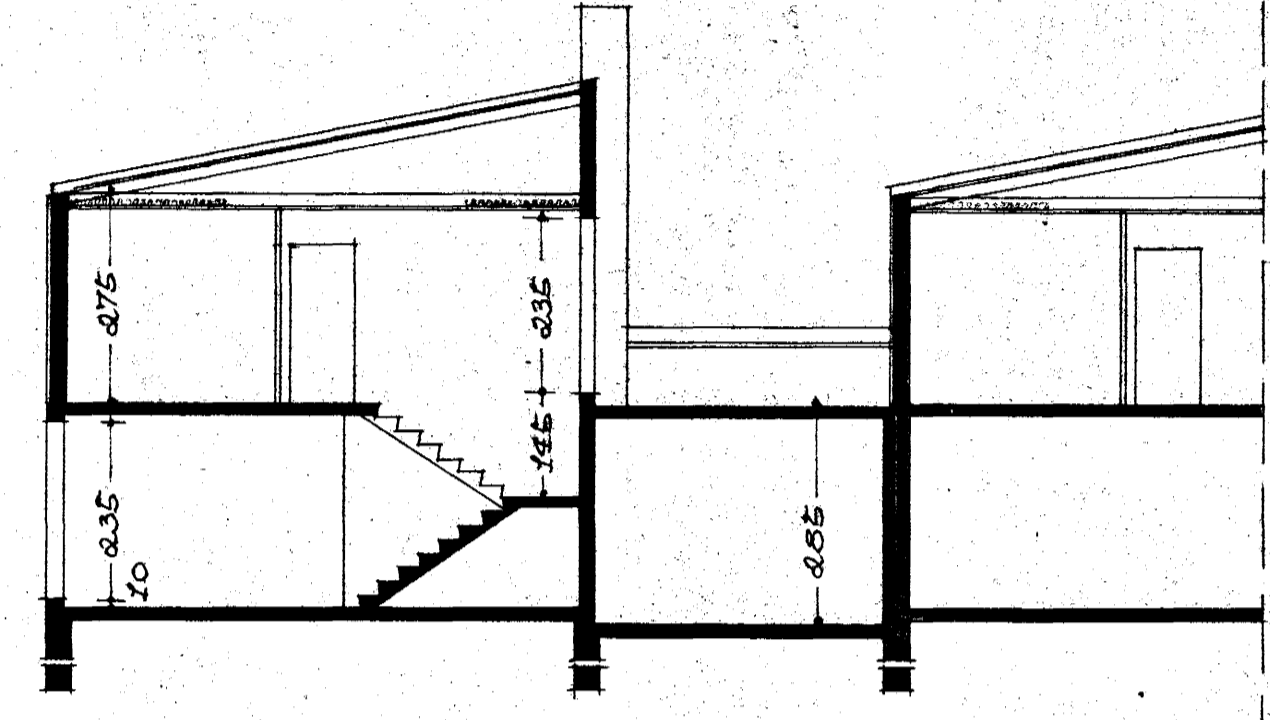
VESTUR



SKURÐUR A-A

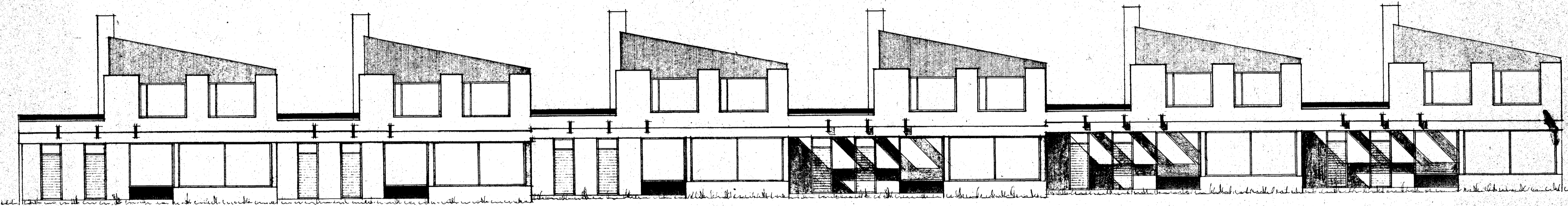
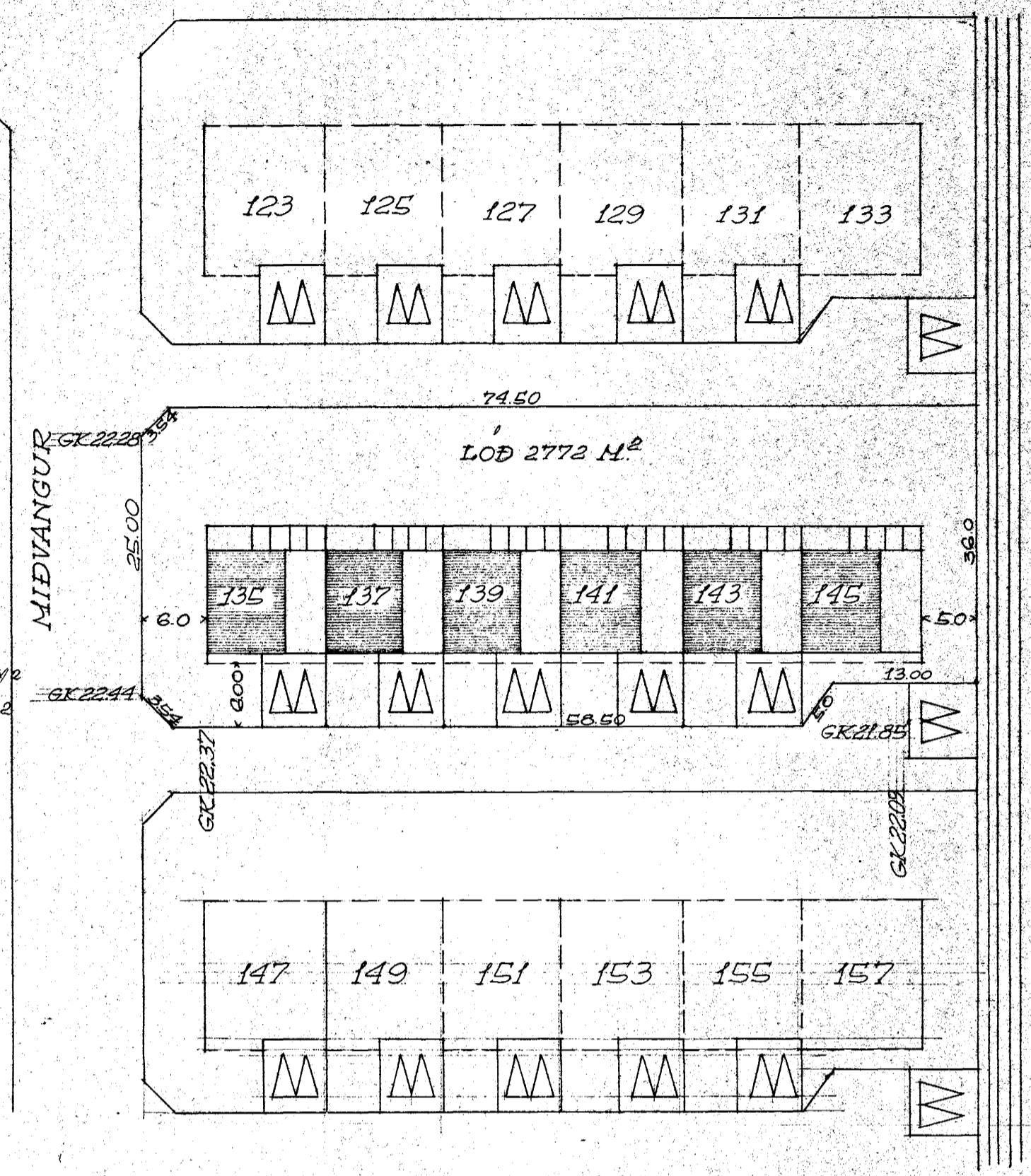


AUSTUR

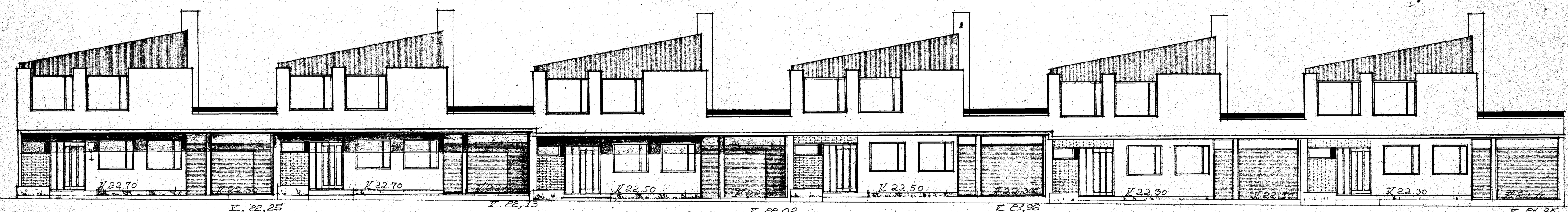


SKURÐUR B-B

AFSTÖÐUMYND M 1:500
FLATARMÁL HÖBS 2. HÆÐ 117,48 M²
2. HÆÐ 69,78 M²



SÚÐUR



NORÐUR

REVIJIAST 1 ÁGÚST 1971
Syrtan Sveinsson