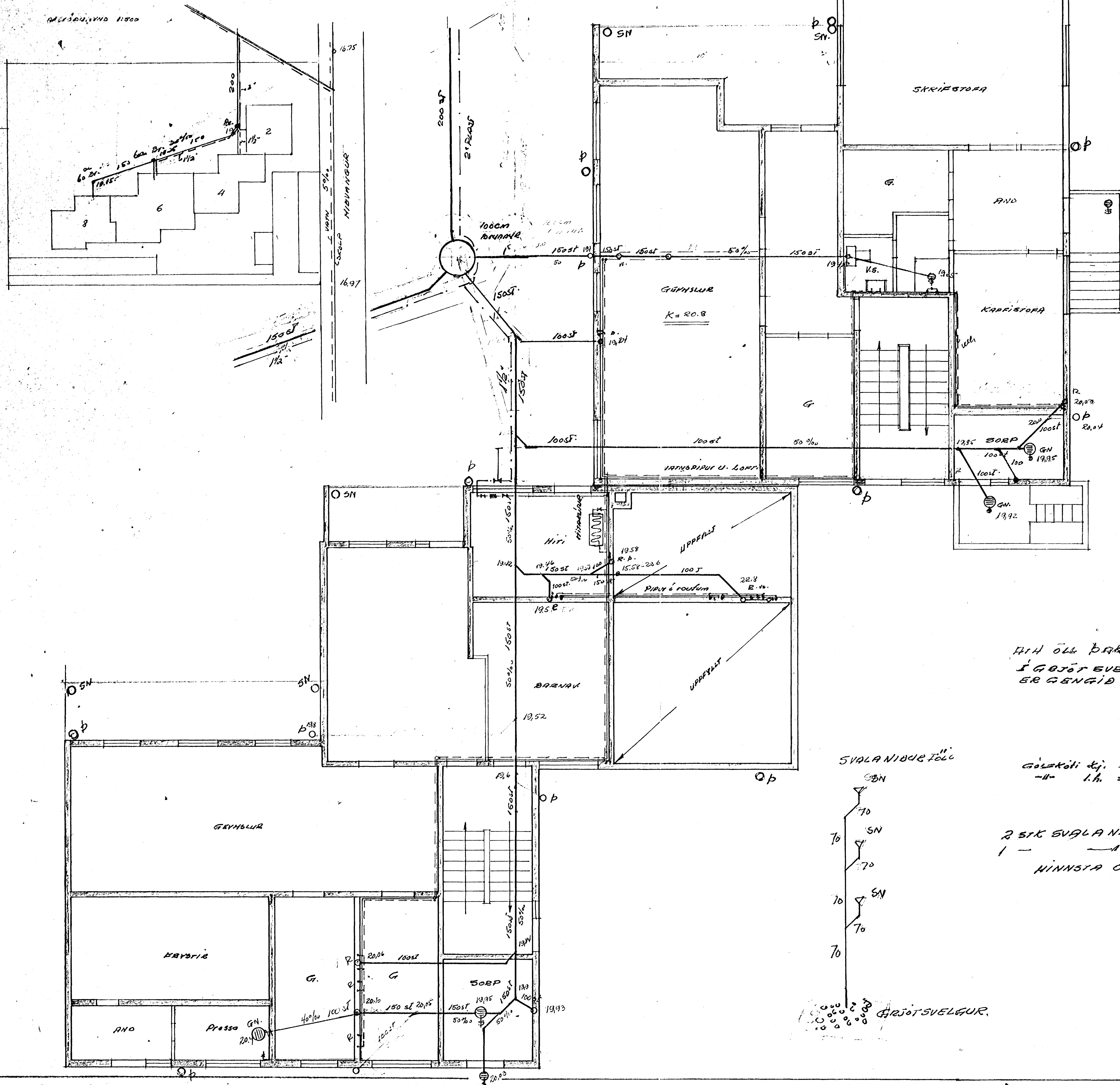


DRÖGDAU, VIND 1:500



BREYTT 20.12.71  
 af um þakmál föll

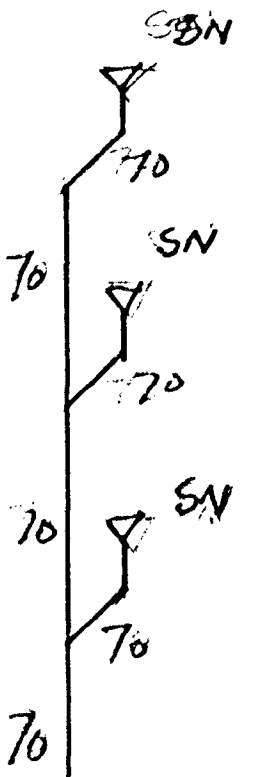
ATH ÖLL ÞAKNIBUR FÖLL LEIÐIST  
 Í GÖTJÓT EVELG, SEM VANDLEGA  
 ER GENGID ERA

SVALA NIBUR FÖLL

Gölkoti stj. = 20.8  
 -H- l.h. = 233

Pr. 17.8.71  
 tdb

2 STK SVALA NIBUR FÖLL á SVÖLUN 12-15m<sup>2</sup>  
 1 - - - - - 5.6m<sup>2</sup>  
 HINNSTA ÖPNING Hverra ristar 40cm<sup>2</sup>.  
 12.2.72.



GÖTJÓT SVELEUR.

MÍÐVANGUR 2-4 SKOLP & VATN KJALLABI	DRÖG.	20.12.70
	TEIKN.	K.K.G.J.
KOLBEINN K.F. JÓNSSON TEIKNFR. HTEI	DR. 12.2.71	
	TEIKN.NB.	7029
	DL.1.	