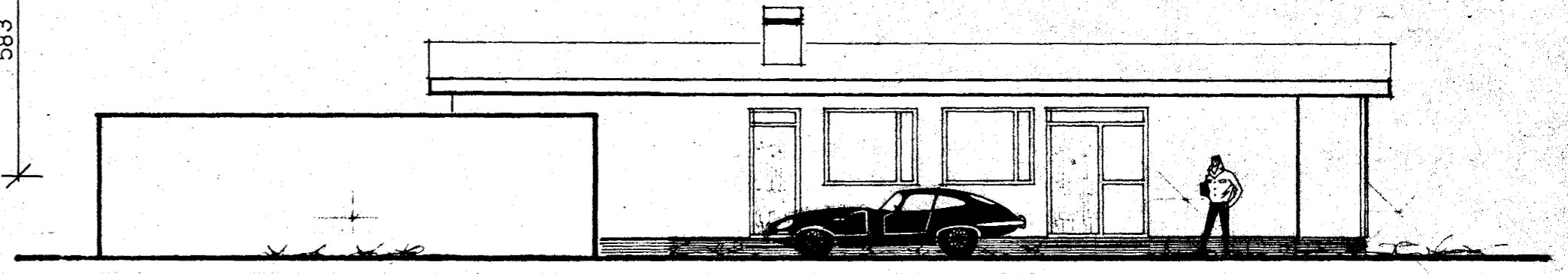
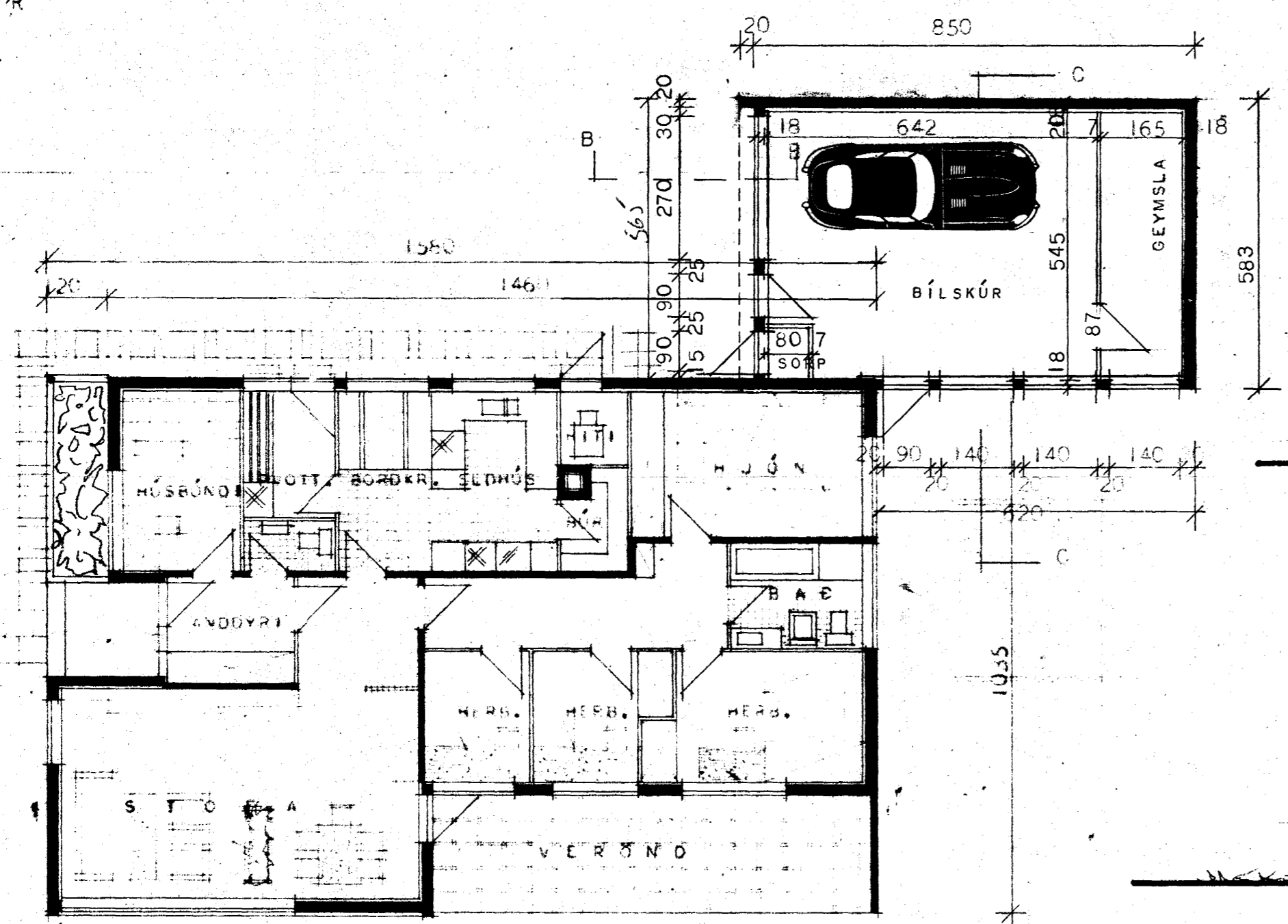
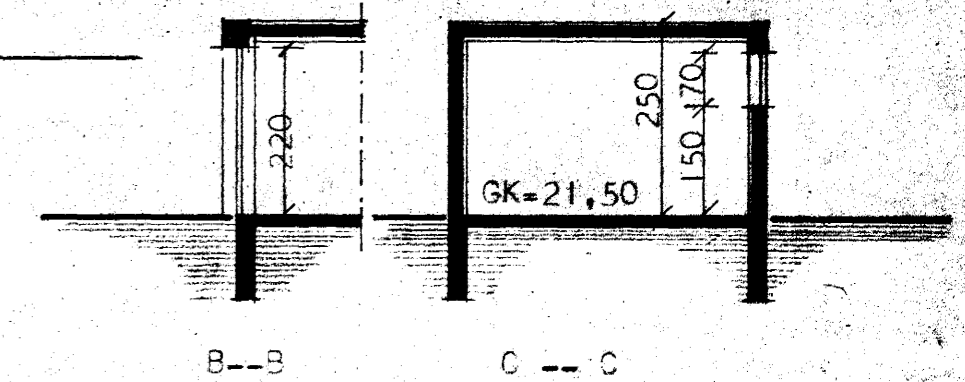
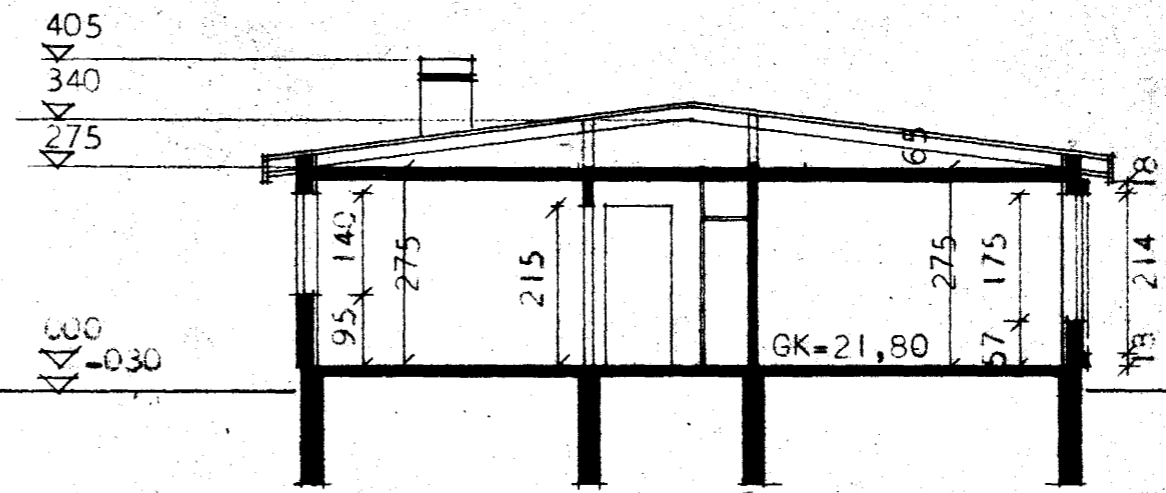
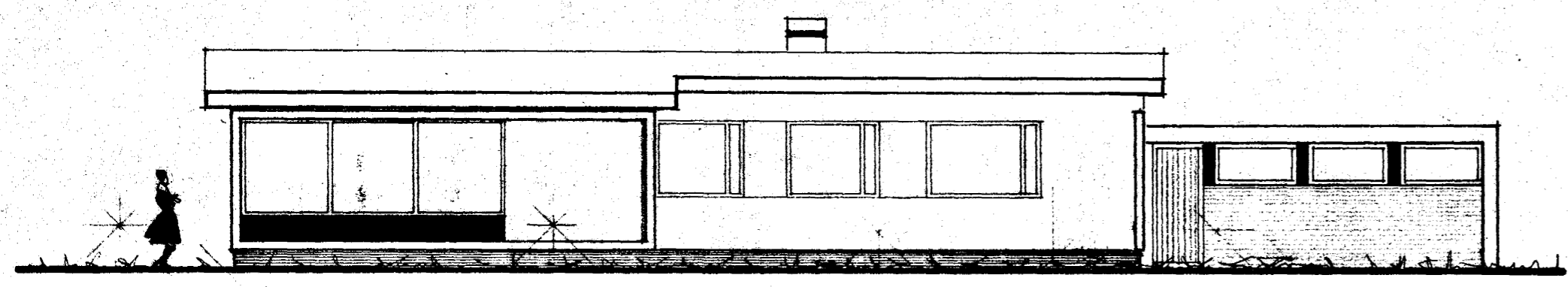
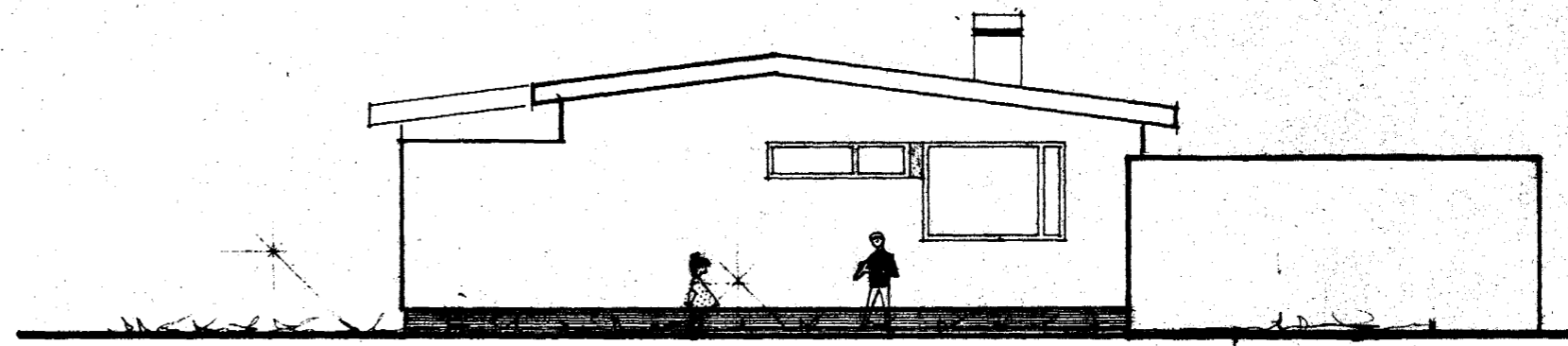


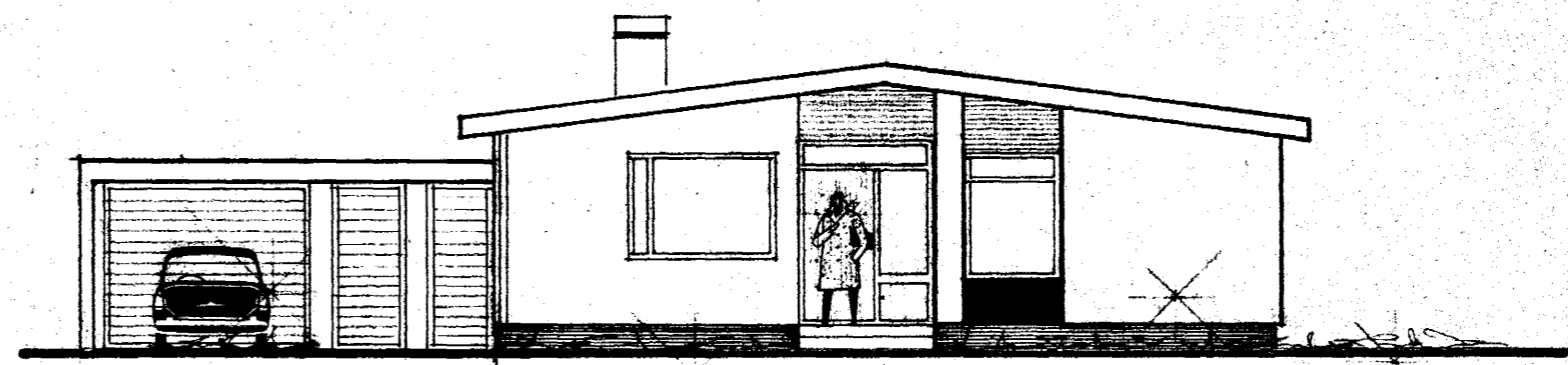
Samþykkt á fund bygginga-
nefndar þ. 9 5 73
BYGGINGAÁRÞJÓUNN
I HAFNARFIRDI
S. Jónsson



BRÚTTÓFLATARMÁL HÚSS --- 135,90 M²
NETTÓFLATARMÁL HÚSS --- 120,00 M²



VEGGIR UMHVERFIS HITAKLEFA OG
SORP SKULU GERDIR ÚR STEINI
OG KLEFARNIR MÚRHÚÐADIR Í
HÓLF OG GÓLF.



$47,0 m^2 \times 120 m^2$
 $\div 36,6 \quad 91$
 $12,4 \quad 72 \quad 638$
 $\quad \quad \quad @ 250/- \quad 11392$
 $\quad \quad \quad \quad \quad \quad 12030$
BÍLSKÚR BREYTT Í FEBR. 1973 MII 10

HÖSNÆÐISMÁLASTOFNUN RÍKISINS	
GRUNNMYND, ÚTLIT OG SNÉIÐING MÁL 1:100	EINBYLISHÚS VERK 83 BLAD NR 1 FEBR. 1966
<i>Haldís Ralldóttir</i>	