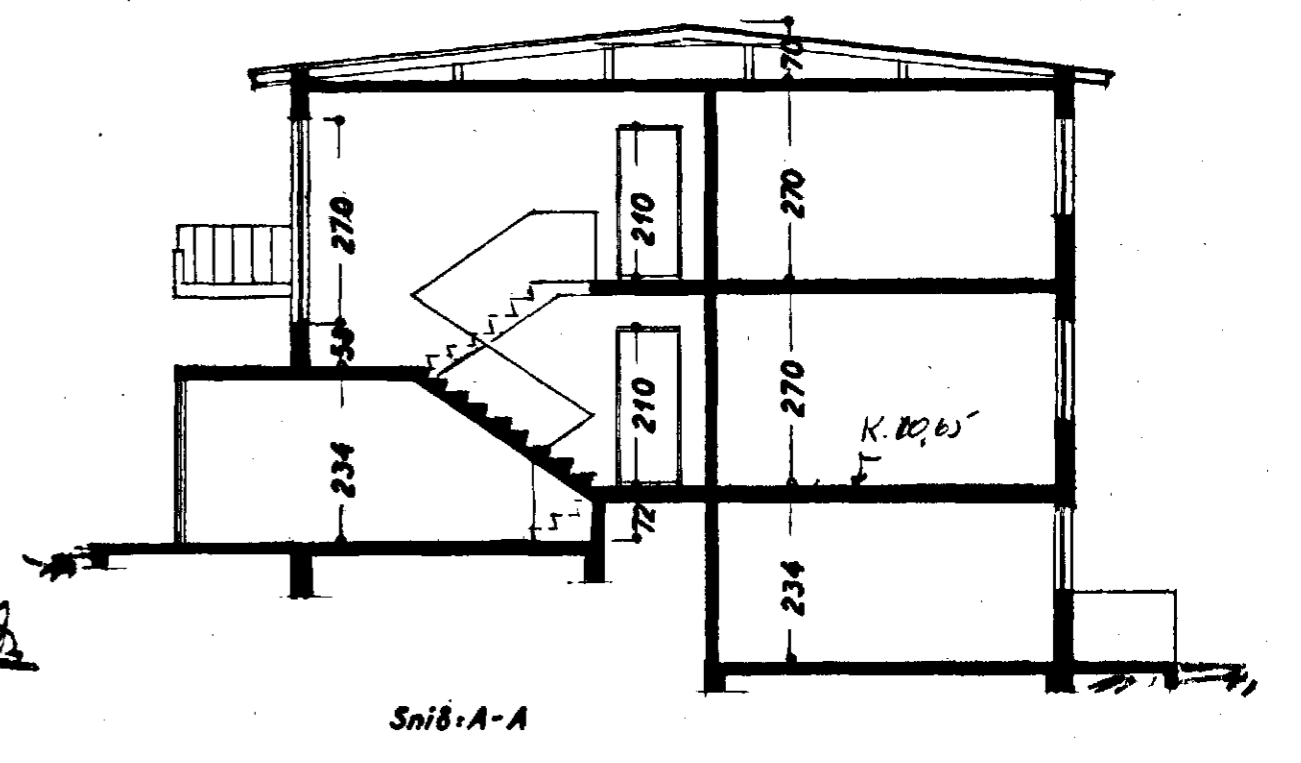
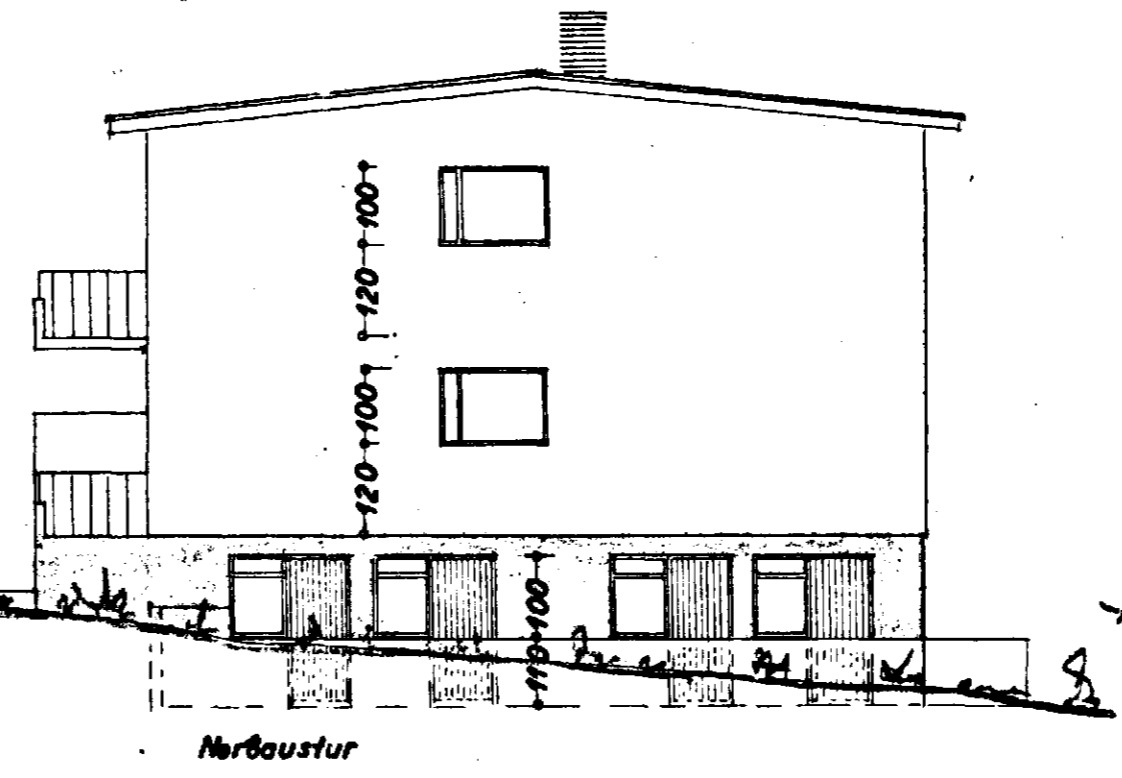
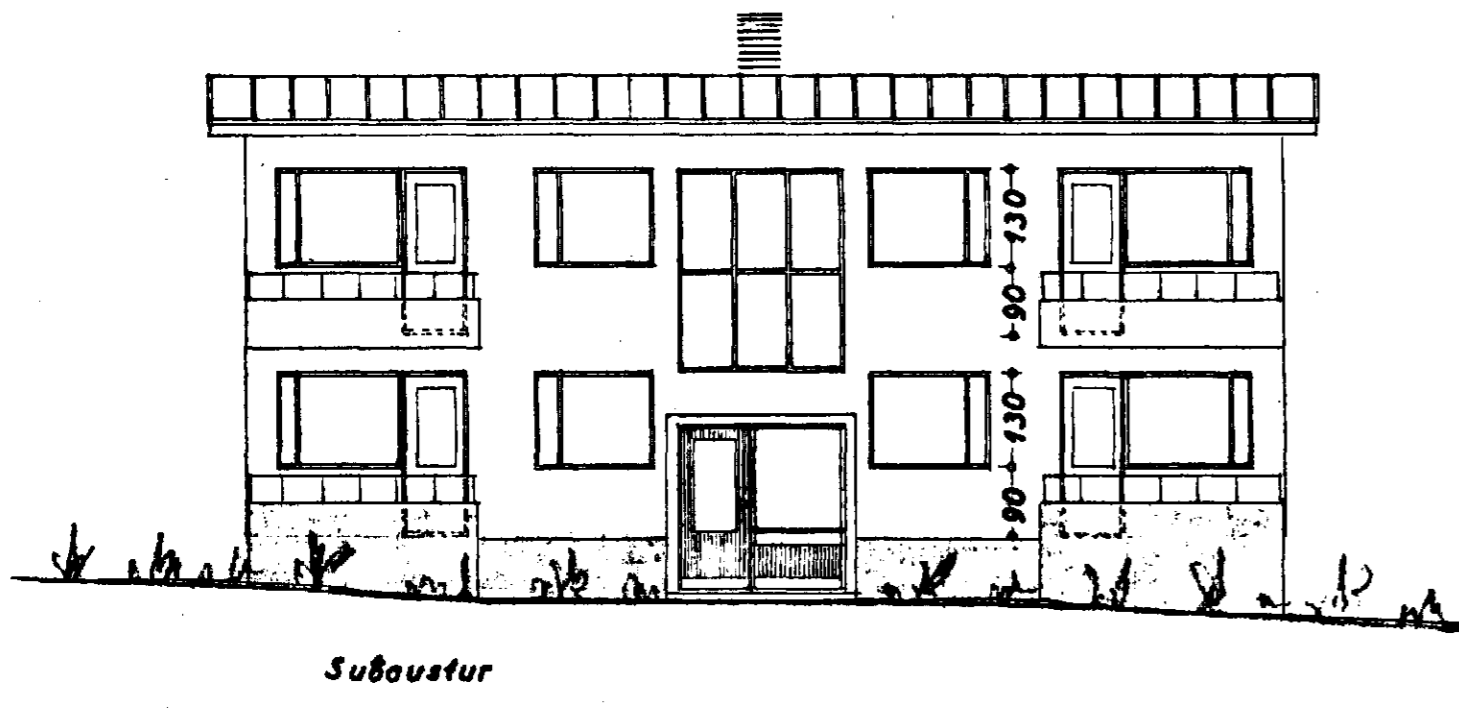
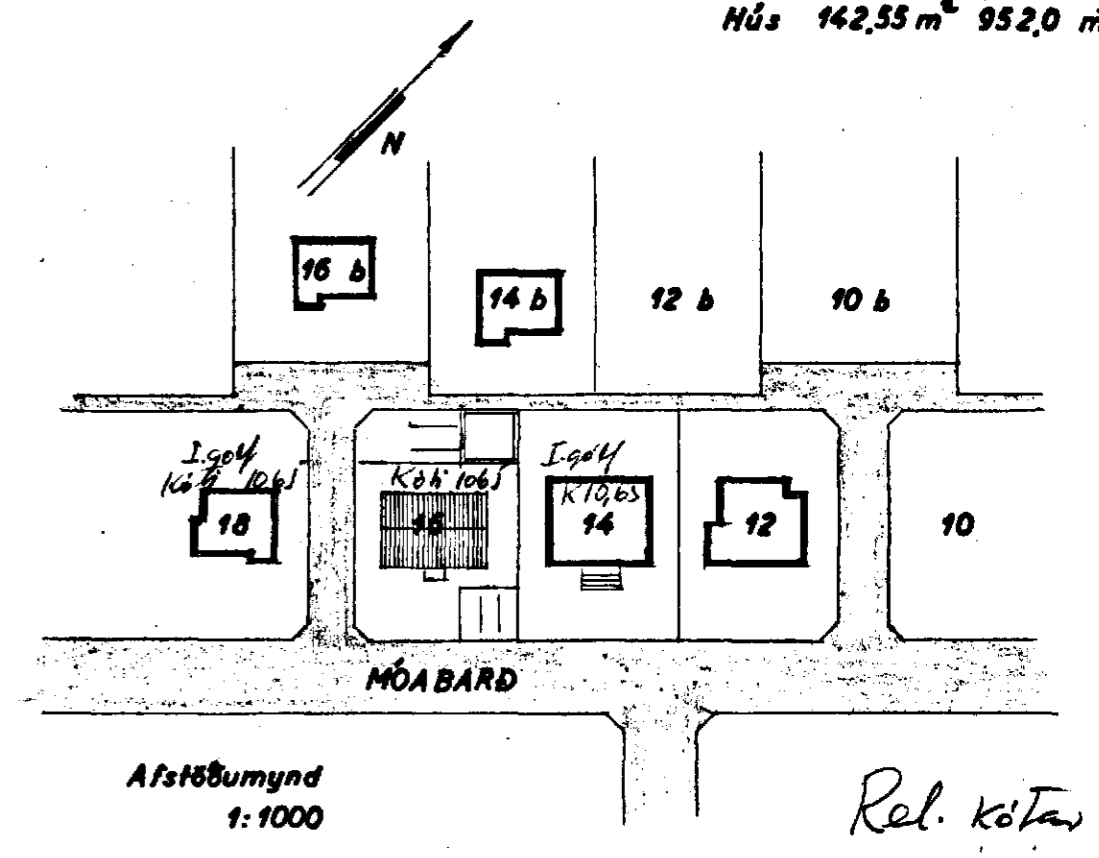
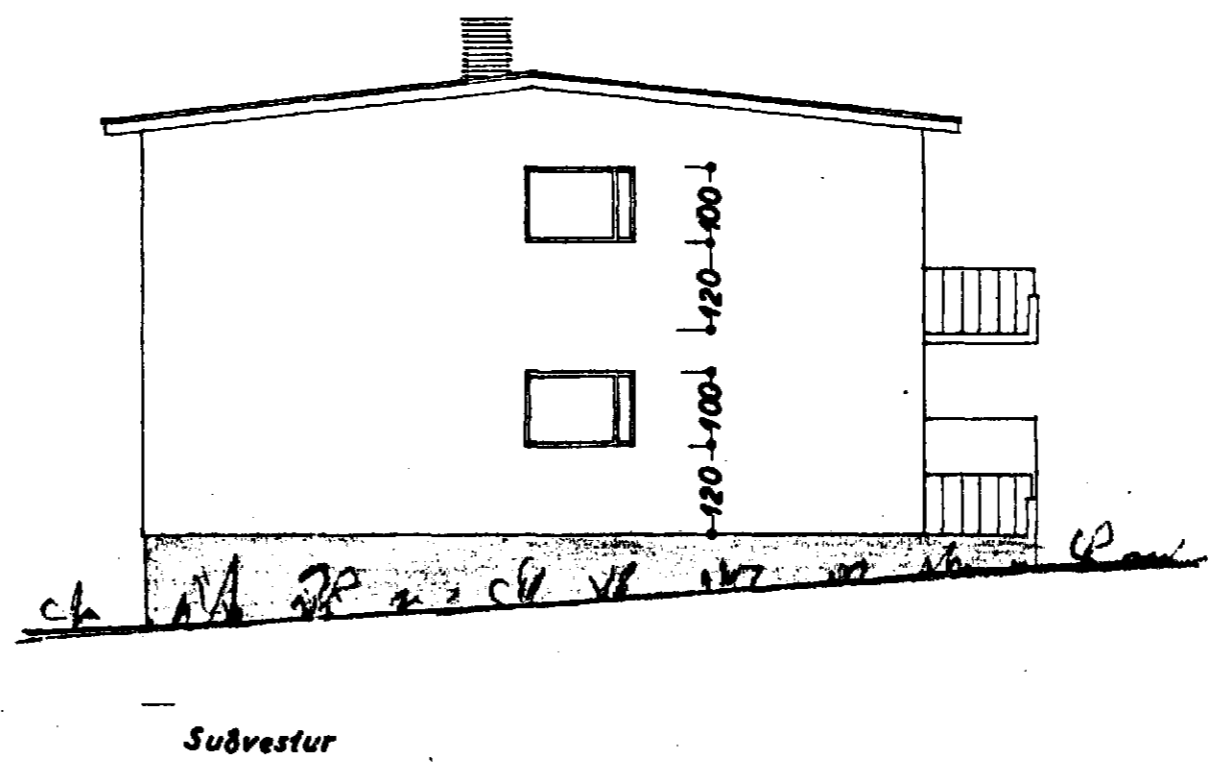
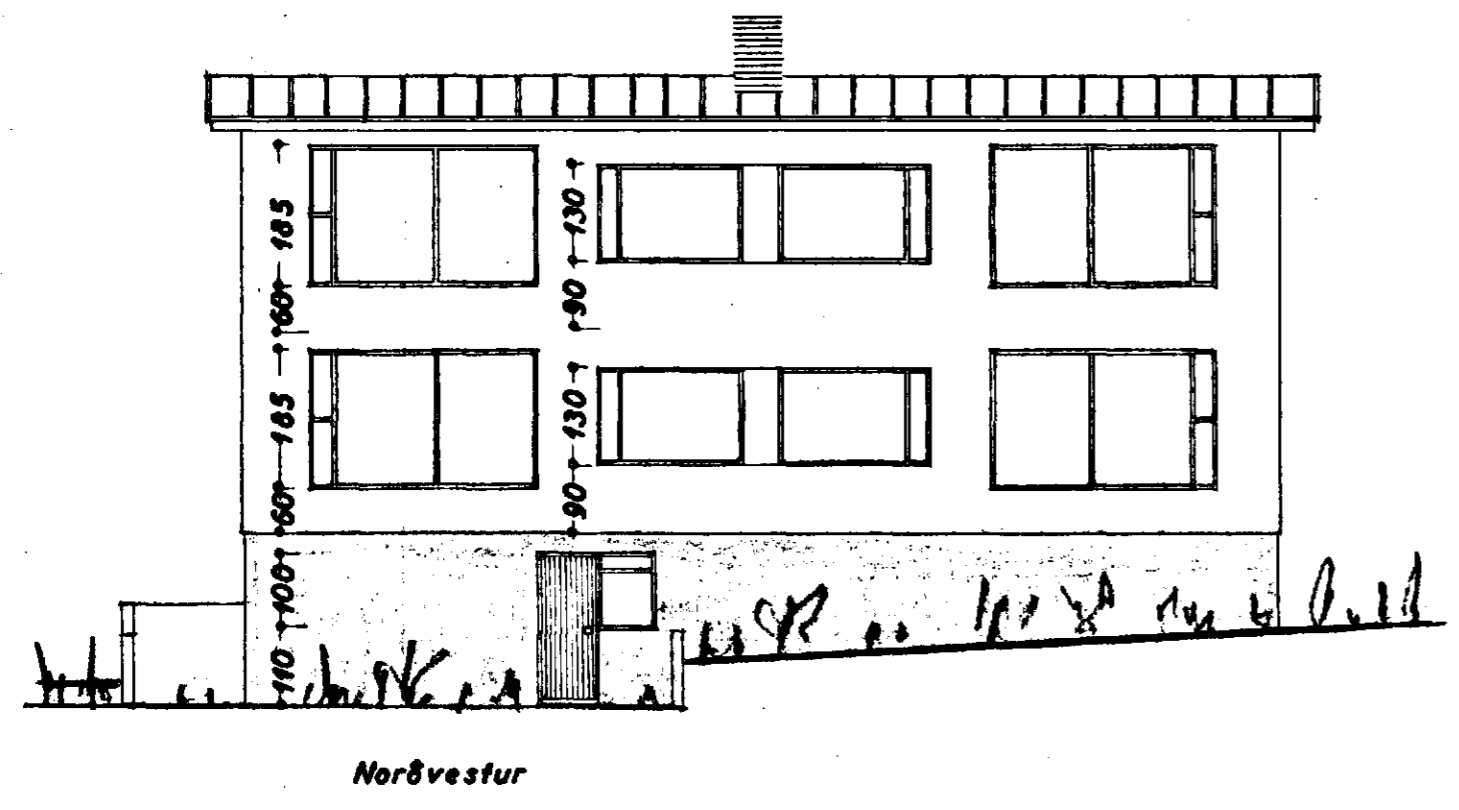


Samþykkt á fundi bygginga-
nefndar p. 7.1.6 1967

BYGGINGAFULLTRÚINN
HAFNARFIRÐI
Sigurður Selmi.

LSS 626.8 m²
Hús 142.55 m² 952.0 m³



MÓABARD NR 16
BREYTING

BLAD 1

ÓHII } 1:100
Snið

Afstæðumynd 1:1000

Hafnarfirði 1. júní 1967
S. Sigurðsson