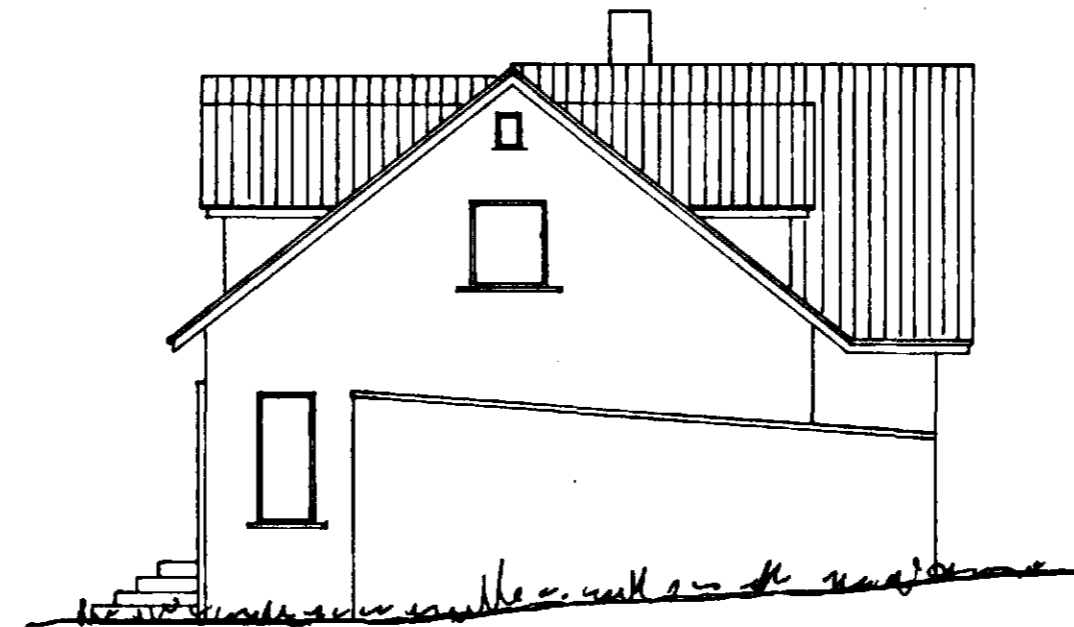


Samþykkt á fundi bygginga-
nefndar þ. 27.7.1989

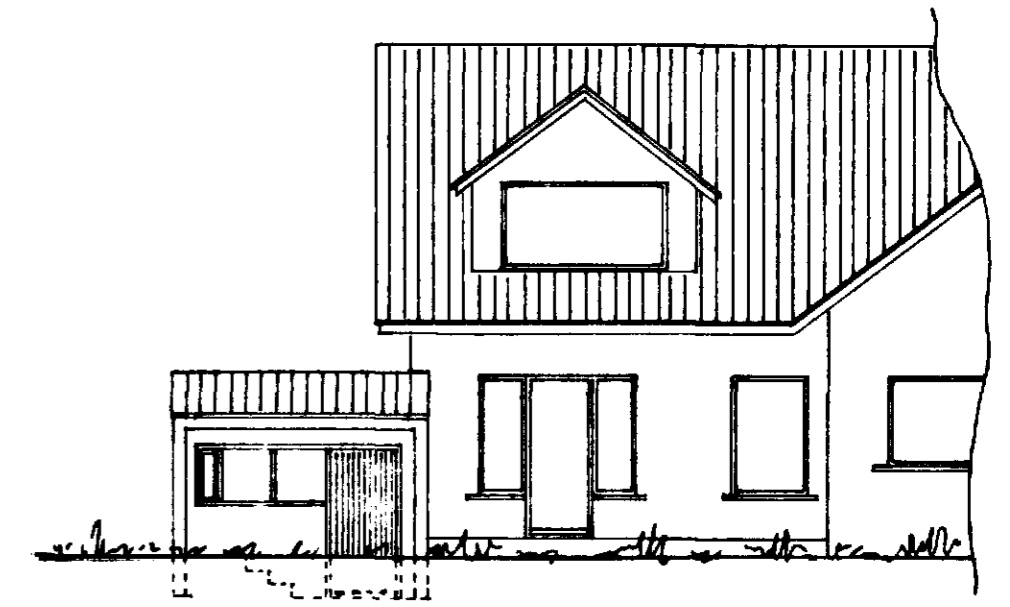
BYGGIÞIGAFULLTRÚINN
Í HAFNARFIRÐI



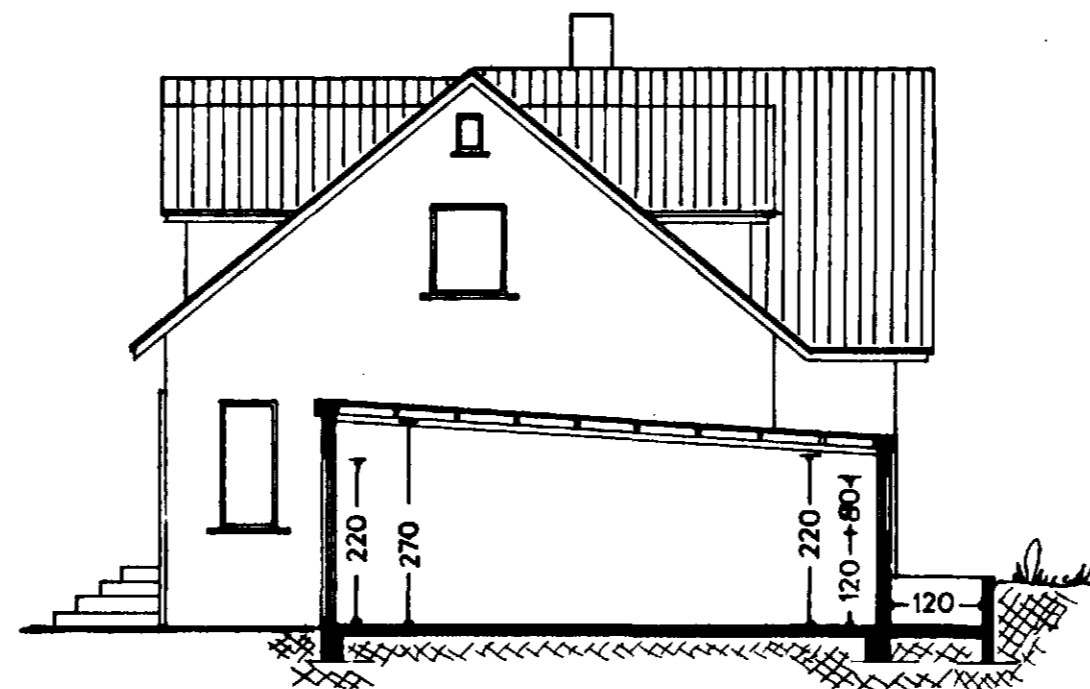
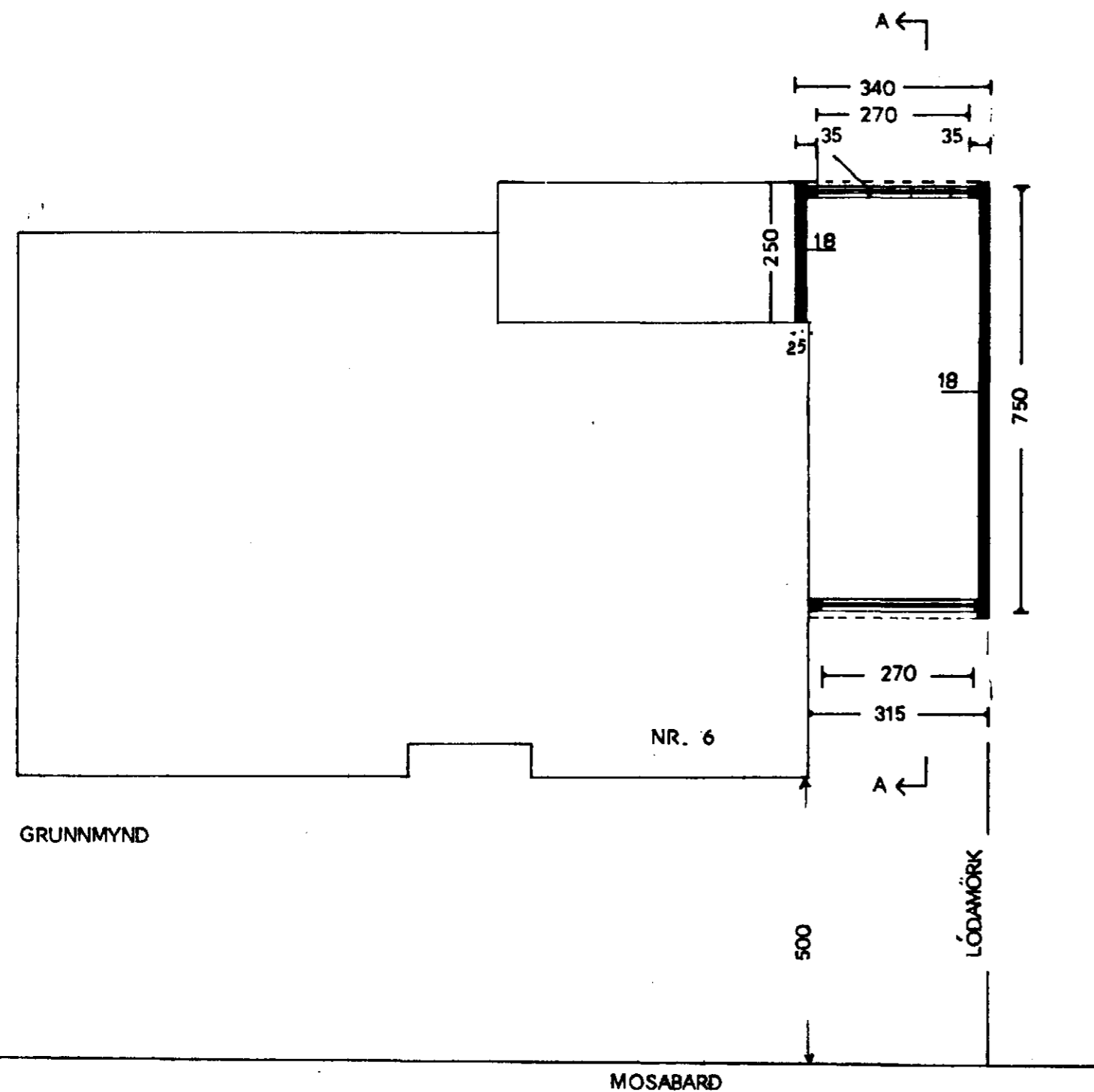
NORDAUSTUR



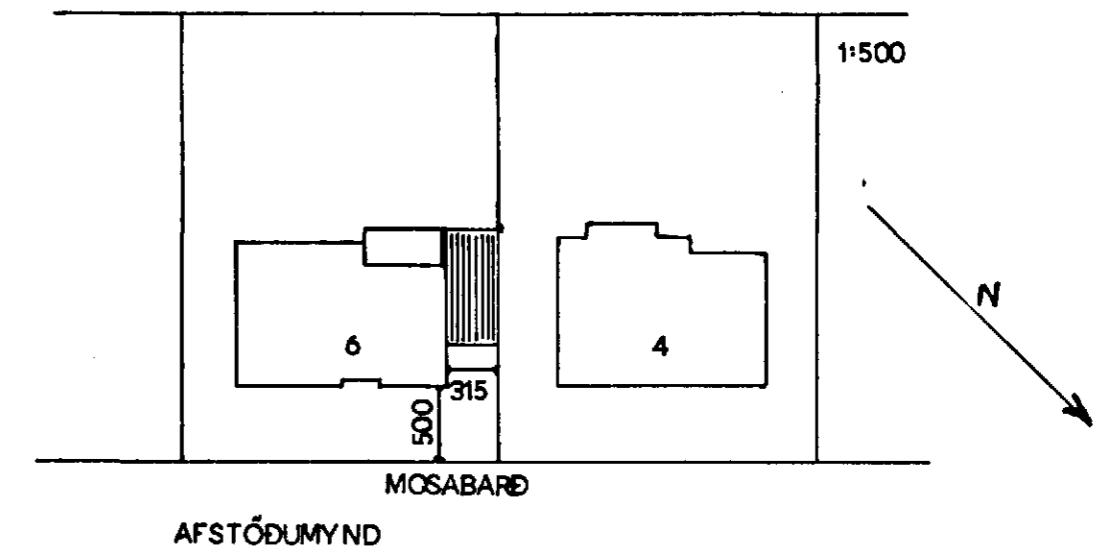
NORDVESTUR



SUDVESTUR



SNID A-A



STÆRÐ
24,2m² 64 m³

BREYTING

ÞILGEYMSLA

MOSABARÐ NR. 6

ÚTLIT
GRUNNMYND } 1:100
SNID }
AFSTÖÐUMYND 1:500

Staðmálfirði í júlí 1989
Arnar Friðbjörn