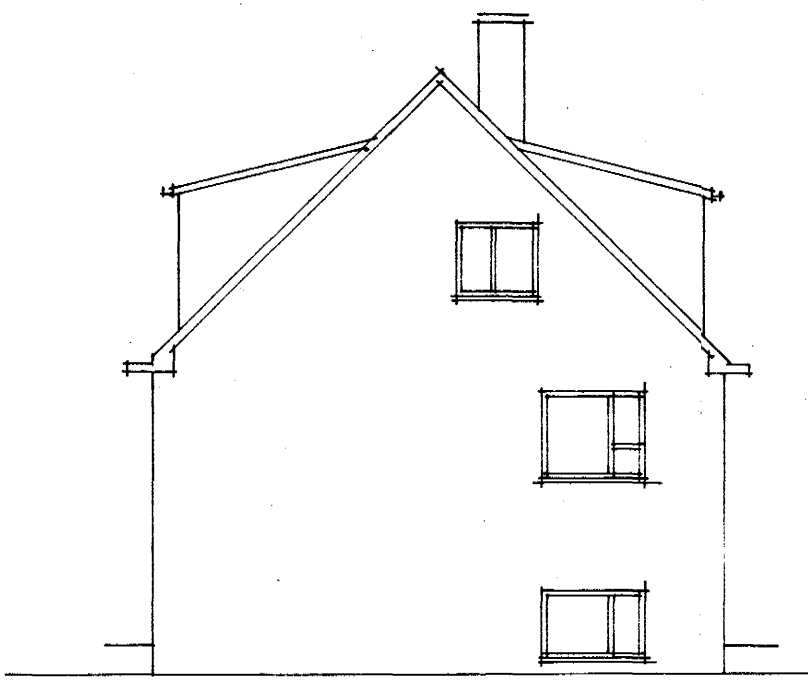


Samþykkt á fundi bygginga-
nefndar þ. 31/5 1972

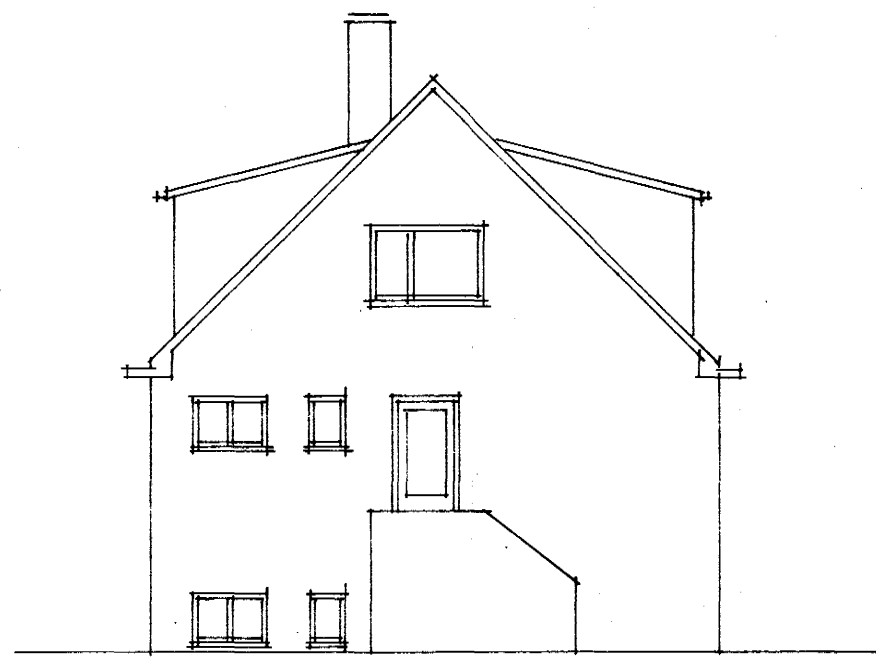
BYGGINGAFULLTRÚINN
Í HAFNAFIRÐI

Sigurður Arnarson

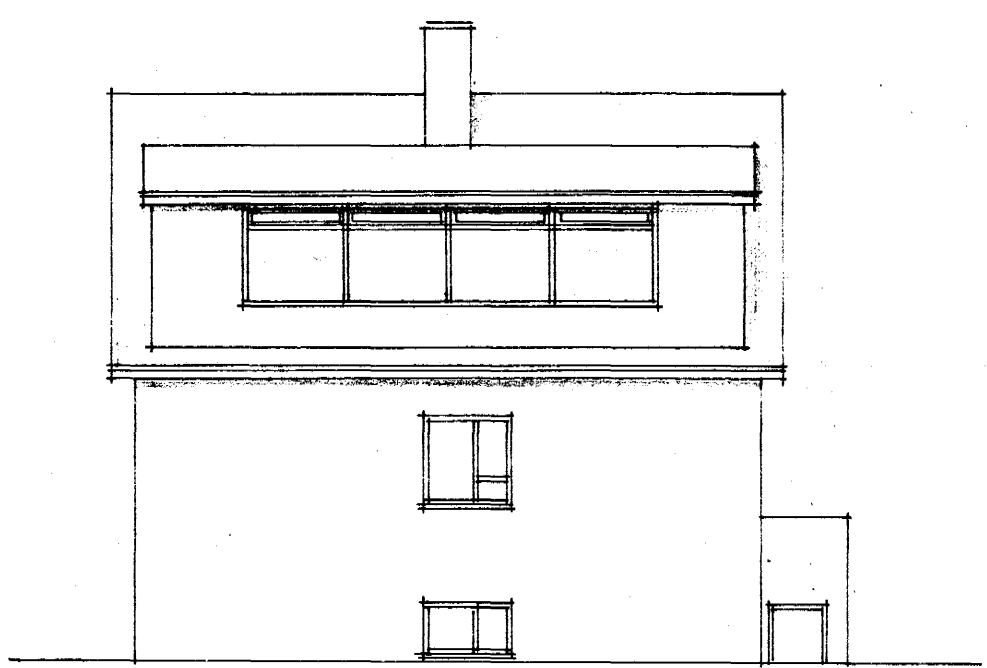
$$\frac{3,8 \times 120}{2} \times 7,9 = 18,0 \text{ m}^2$$



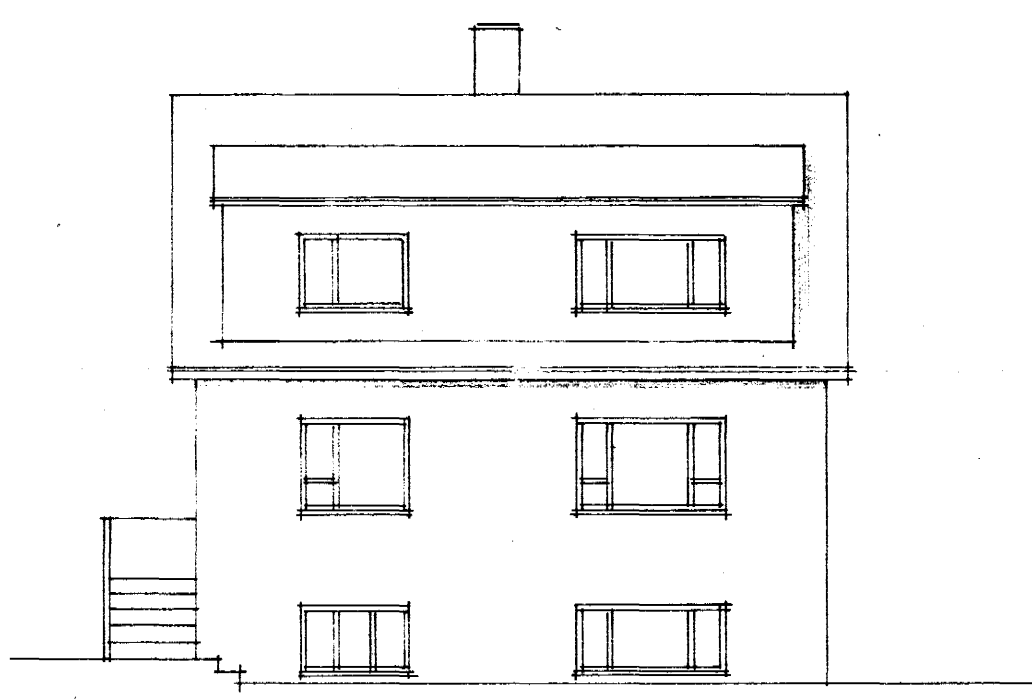
AUSTURHLIÐ



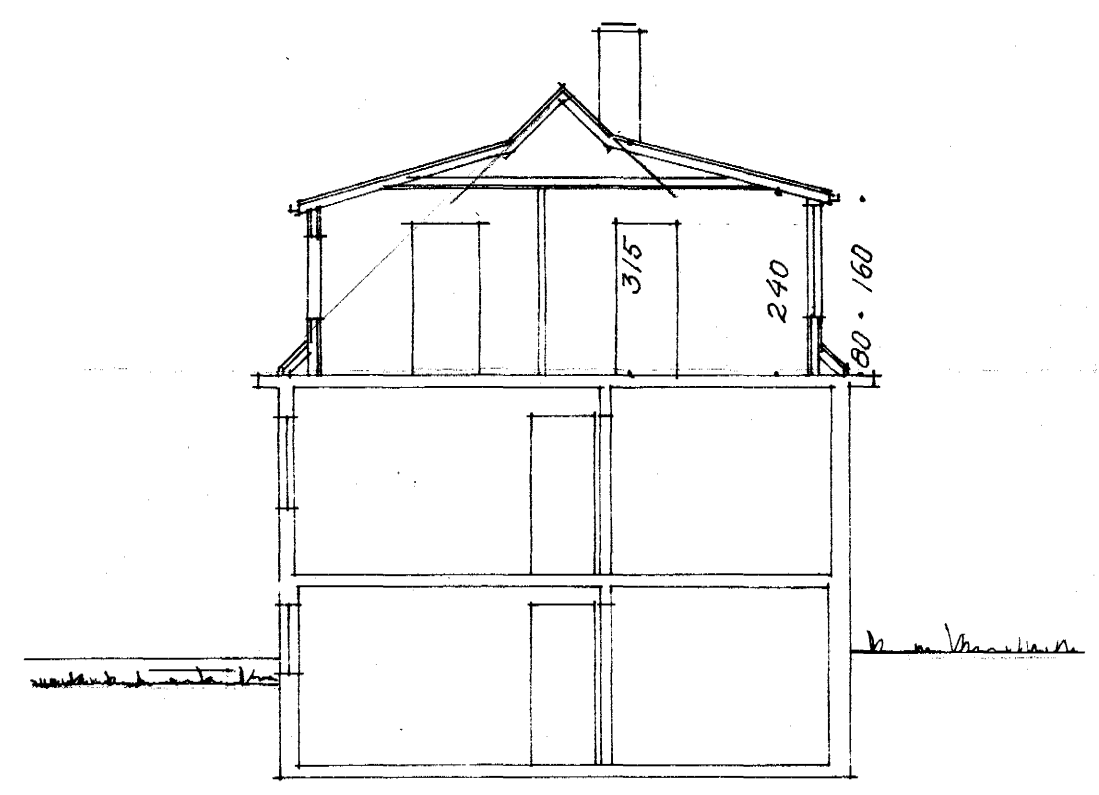
VESTURHLIÐ



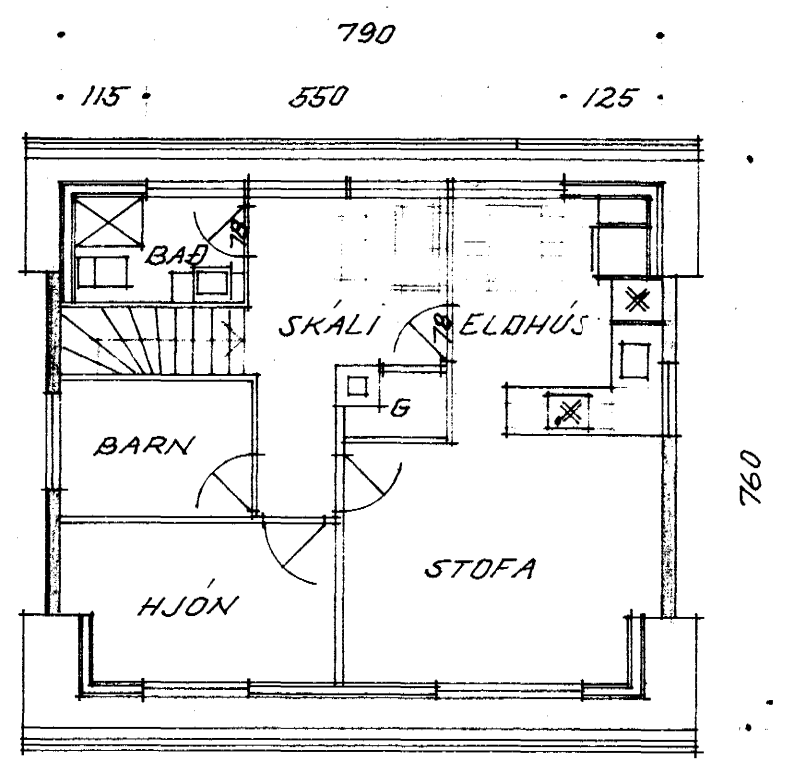
NORÐURHLIÐ



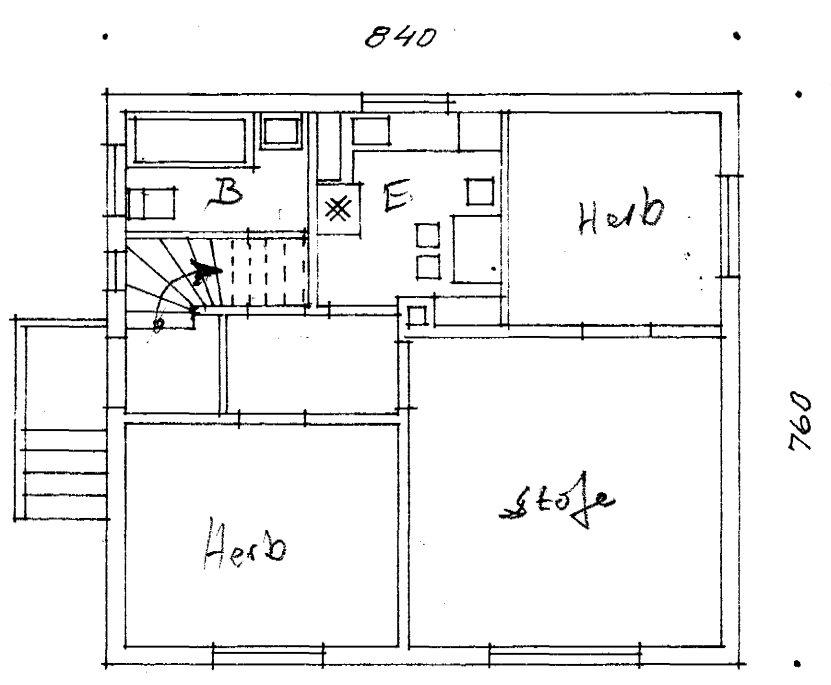
SÚÐURHLIÐ



SNEIÐING



RISHÆÐ



1. HÆÐ

NÖNNUSTÍGUR NR. 12 HAFNAFIRÐI
BREYTING Á RÍSI Í MK 1:100
REYKJAVÍK, Í MAÍ 1972
Sigurður Arnarson MTFI