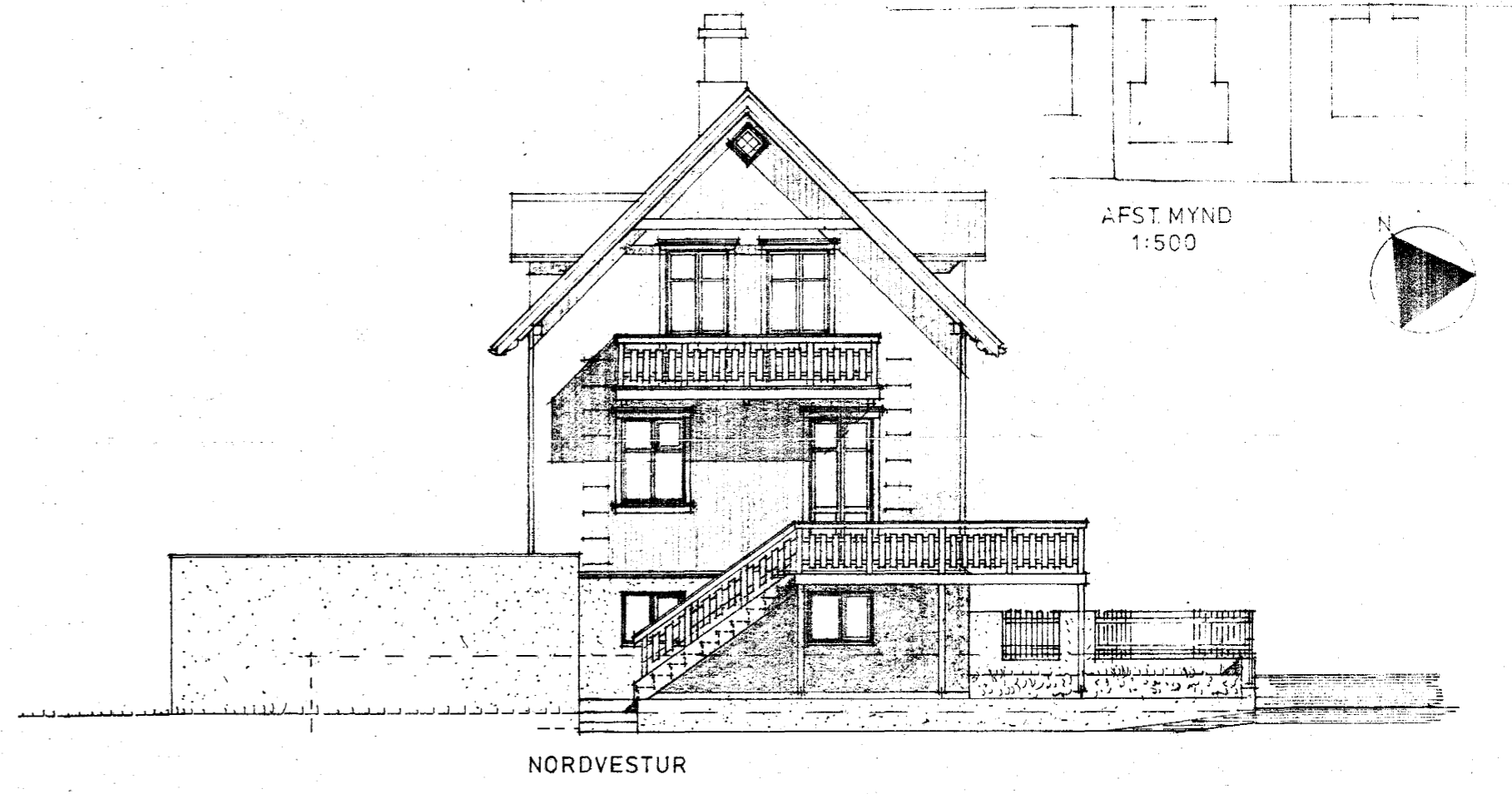
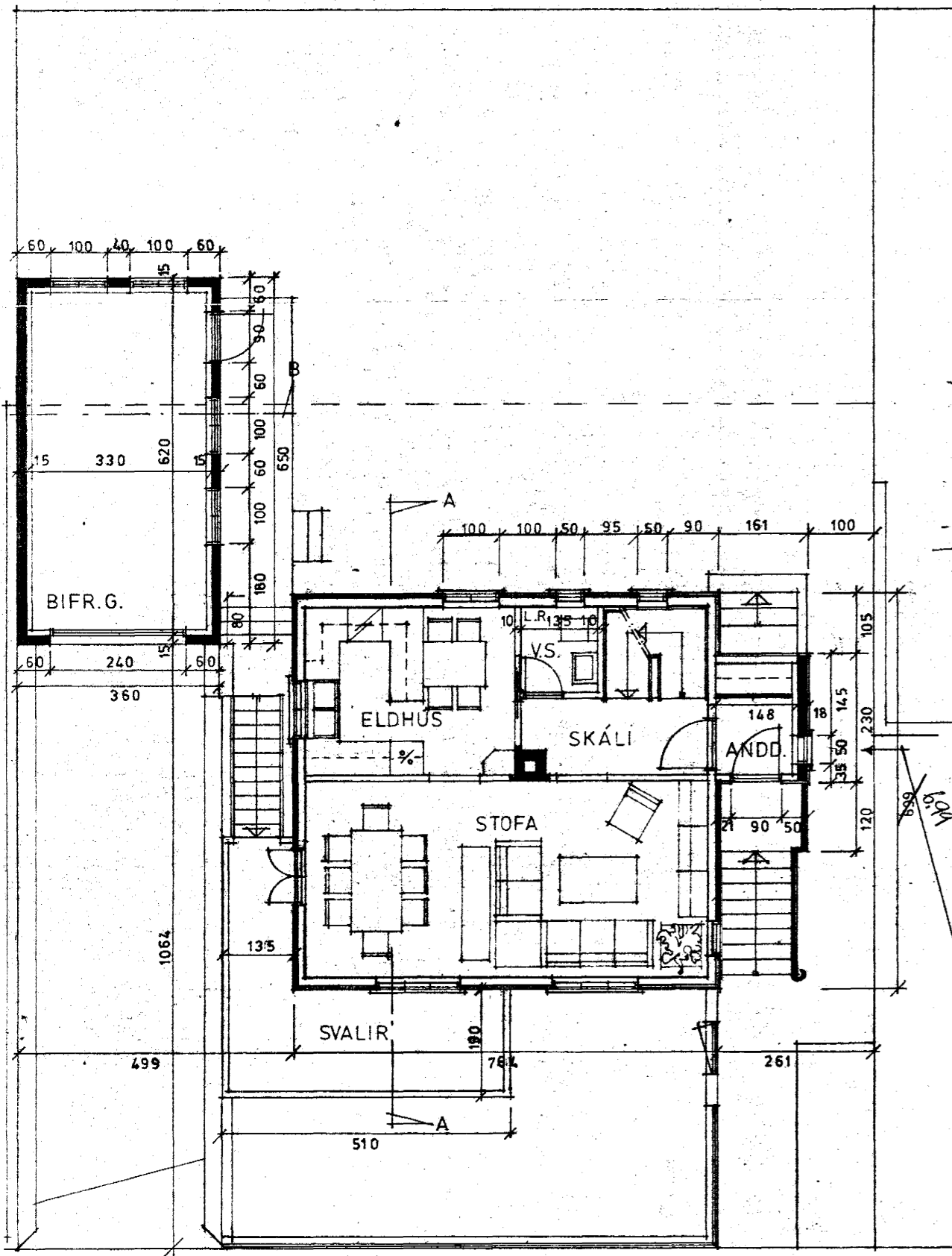
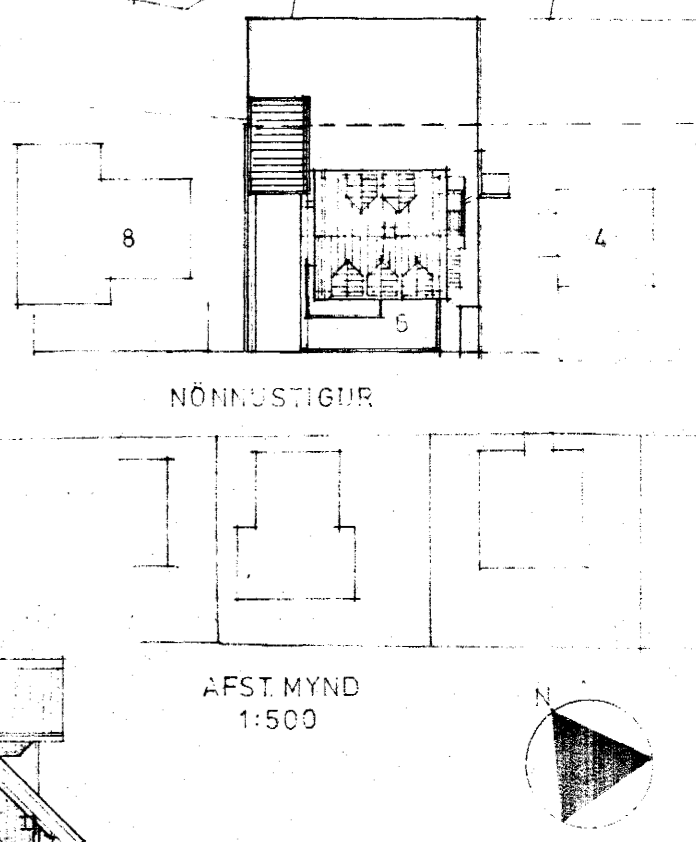
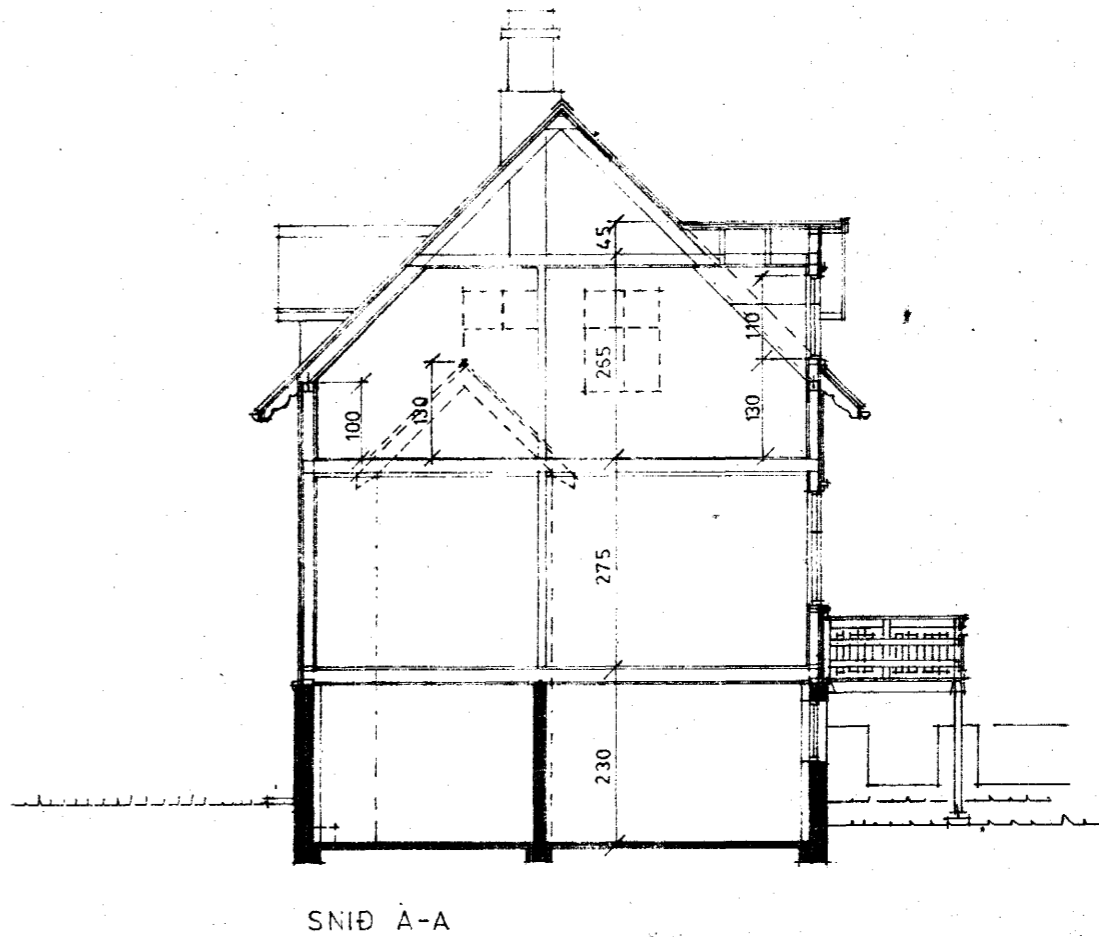
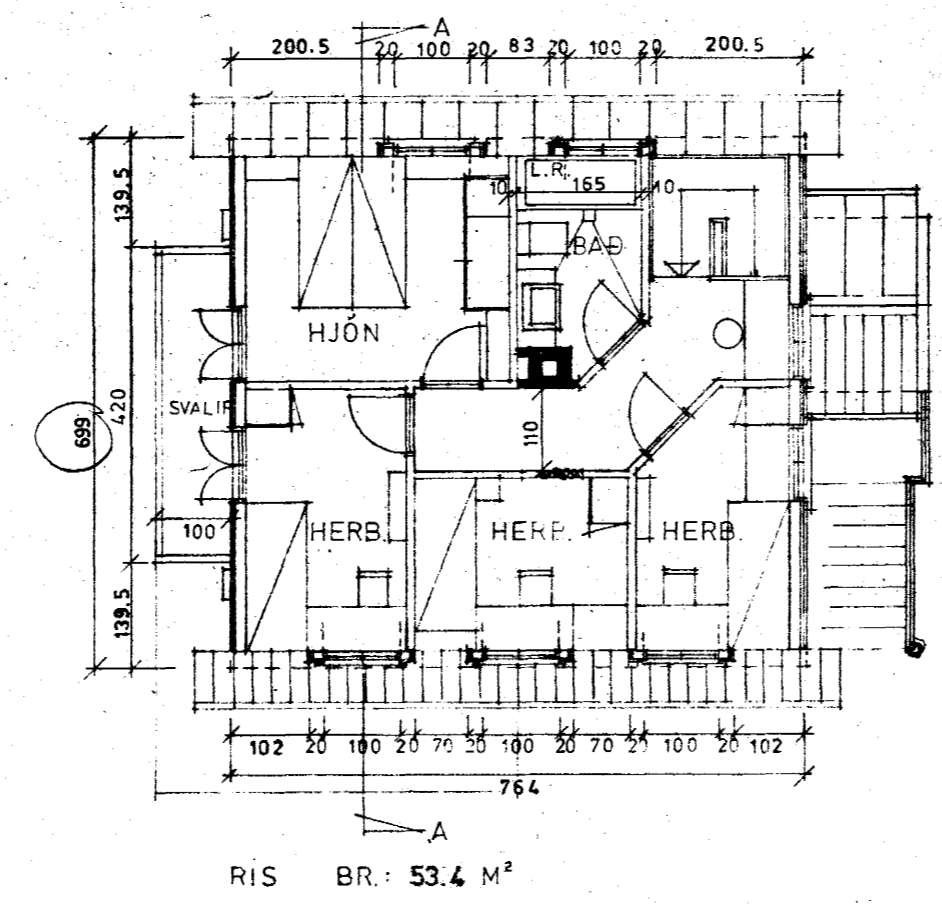
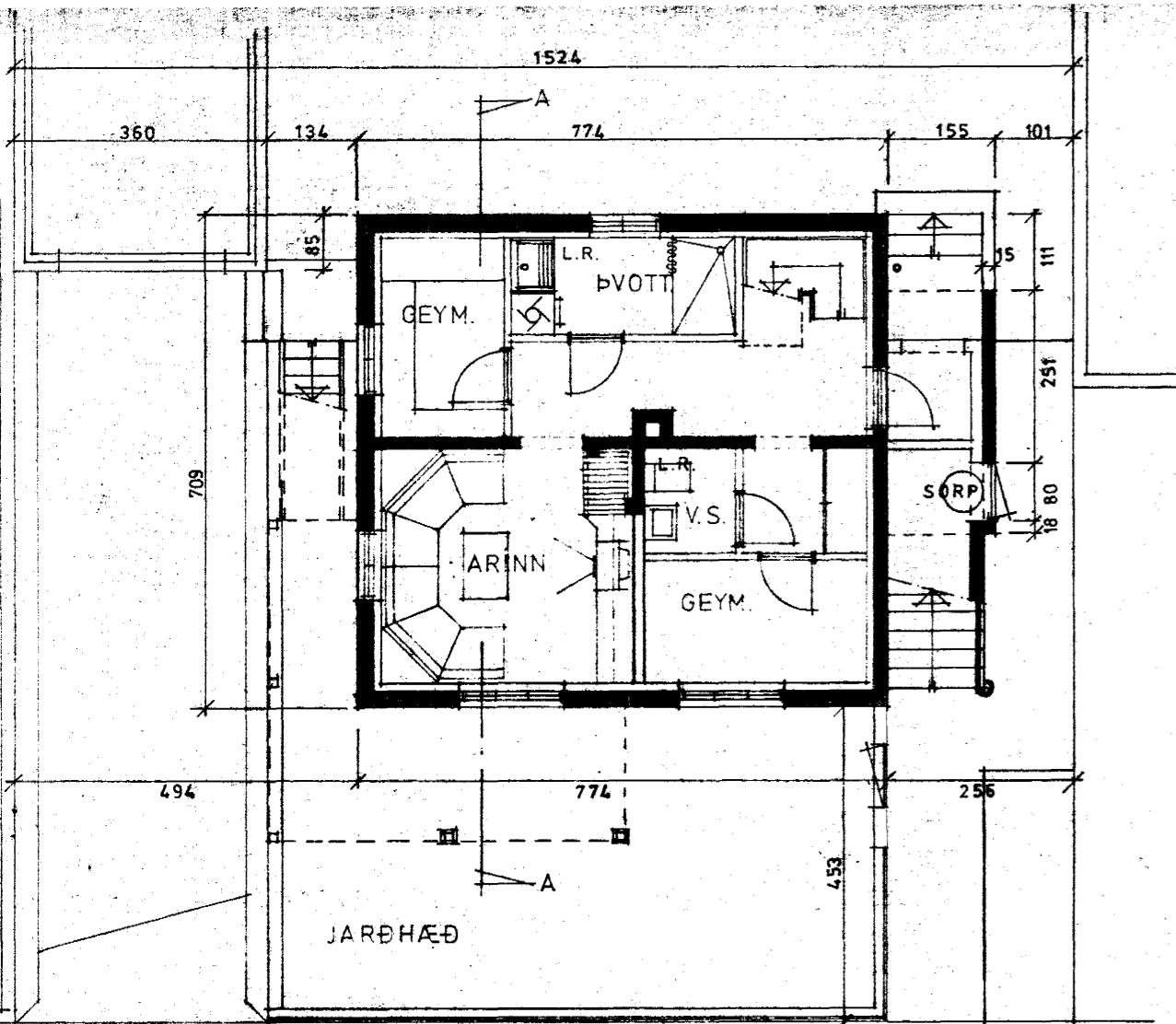
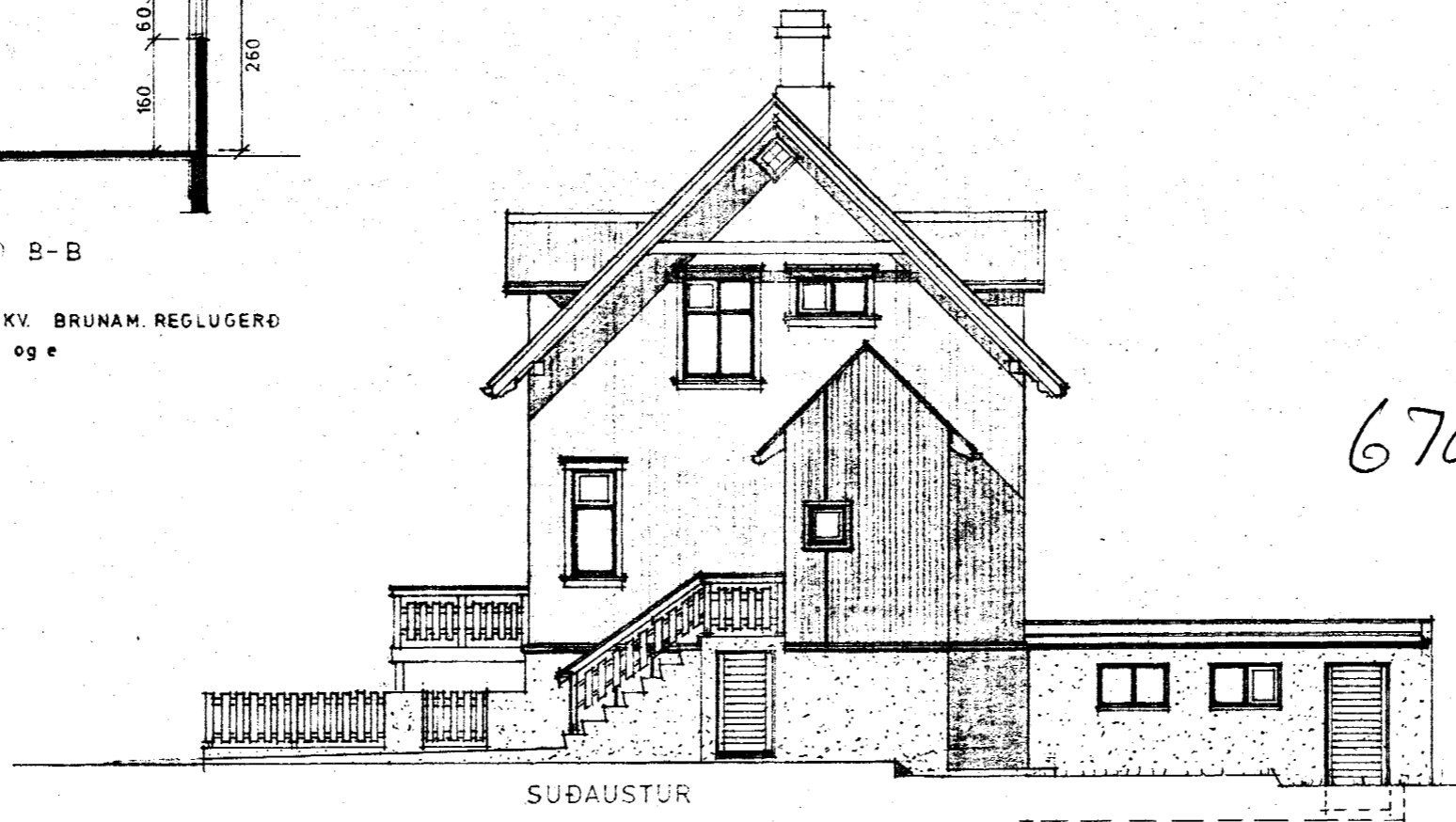
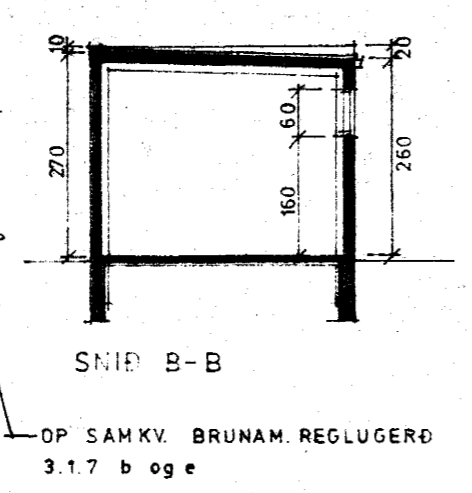


Sampykkt á fundi bygginga-  
nefndar þ. 27/10 1982  
BYGGINGAFULLTRÚNN  
I HAFNARFIRÐI  
*J. Sigurðsson*



RÜMMÁL: HÚS : 451.9 M<sup>3</sup>  
BIFR.G.: 62.0 M<sup>3</sup> 23.4 m<sup>2</sup>



6700-0060. 01  
02



HÆÐ BR: 53.4 M<sup>2</sup> + VIÐB.: 3.7 M<sup>2</sup> = 57.1 M<sup>2</sup>  
BIFR. GEYM.: 23.4 M<sup>2</sup>