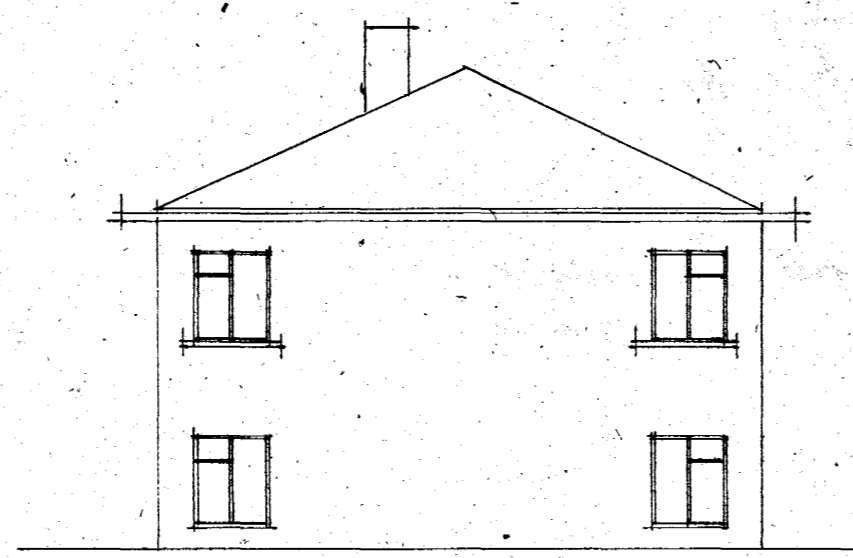
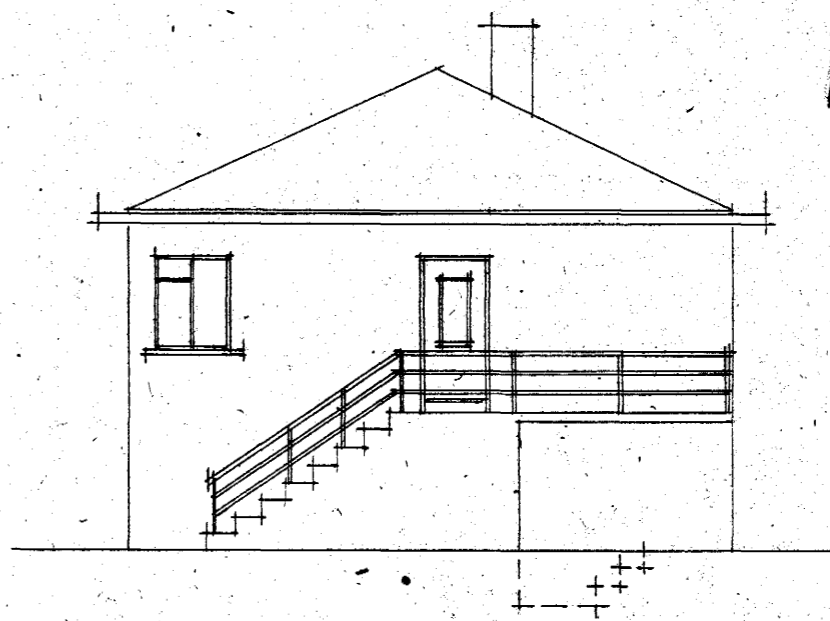


Hús Sóns Þórarínssonar
 við Norðurbraut í Hafnarfirði M. 1260

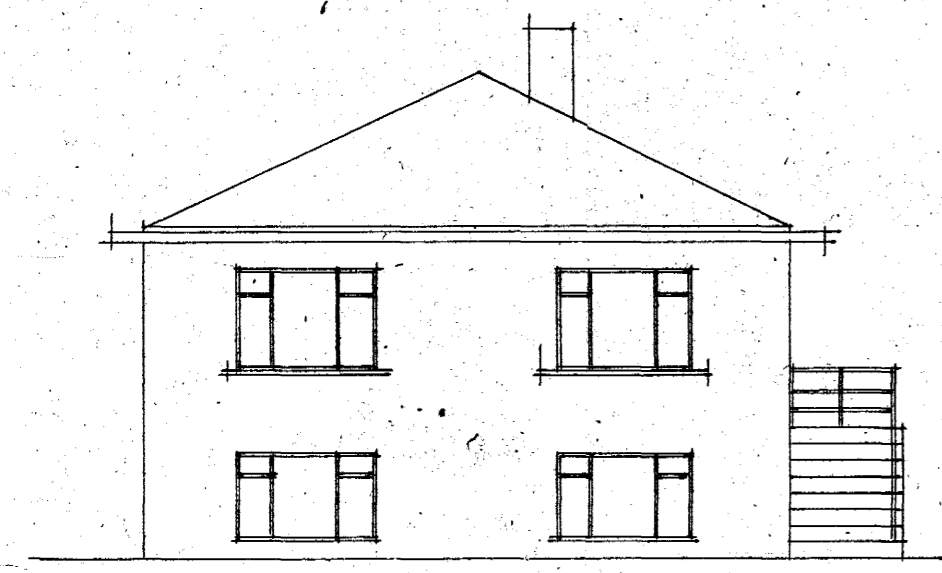
Samþykkt á fundi bygginga-
 nefndar þ. 23. 5. 1946
 BYGGINGARFUR TRÚINN
 Í HAFNARFIRÐI
 E. / 1500 t. g. g.



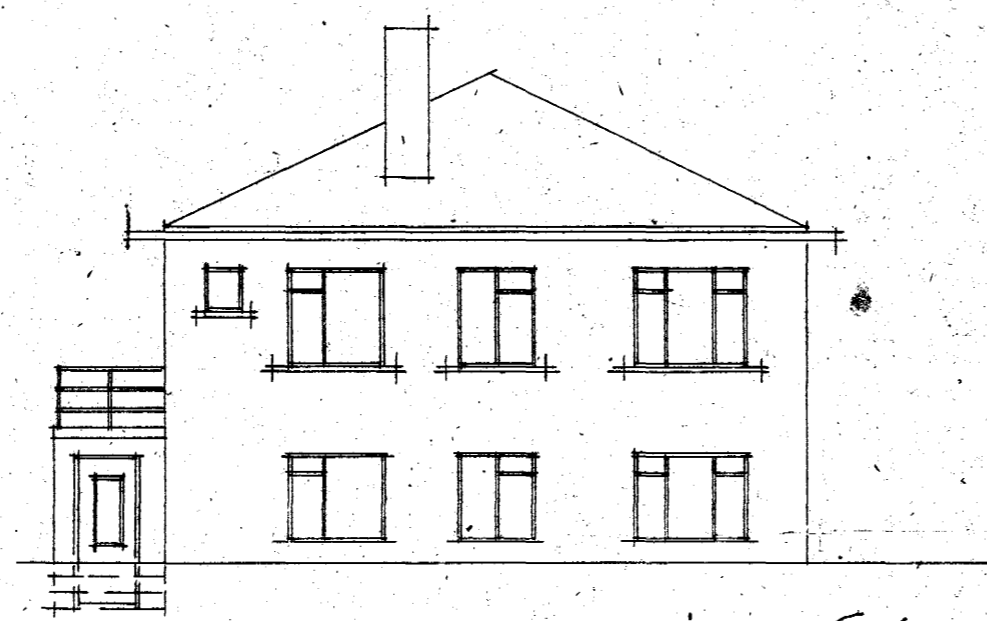
Austur



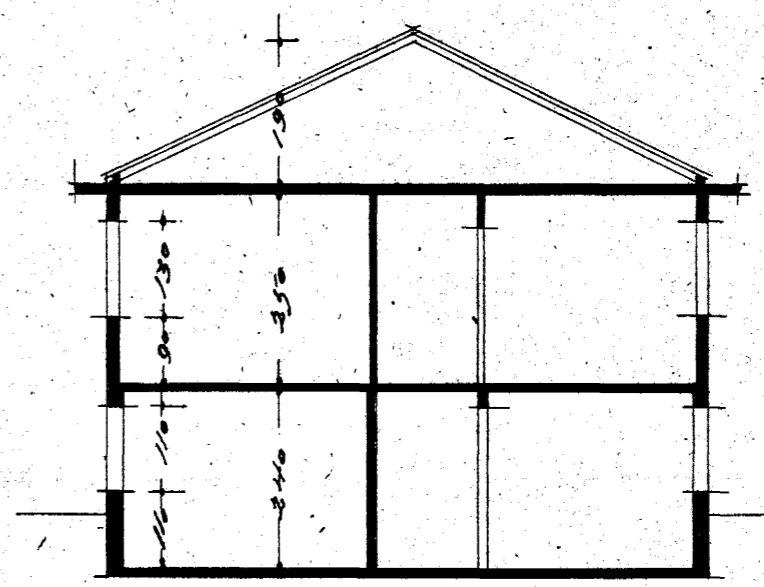
Vestur



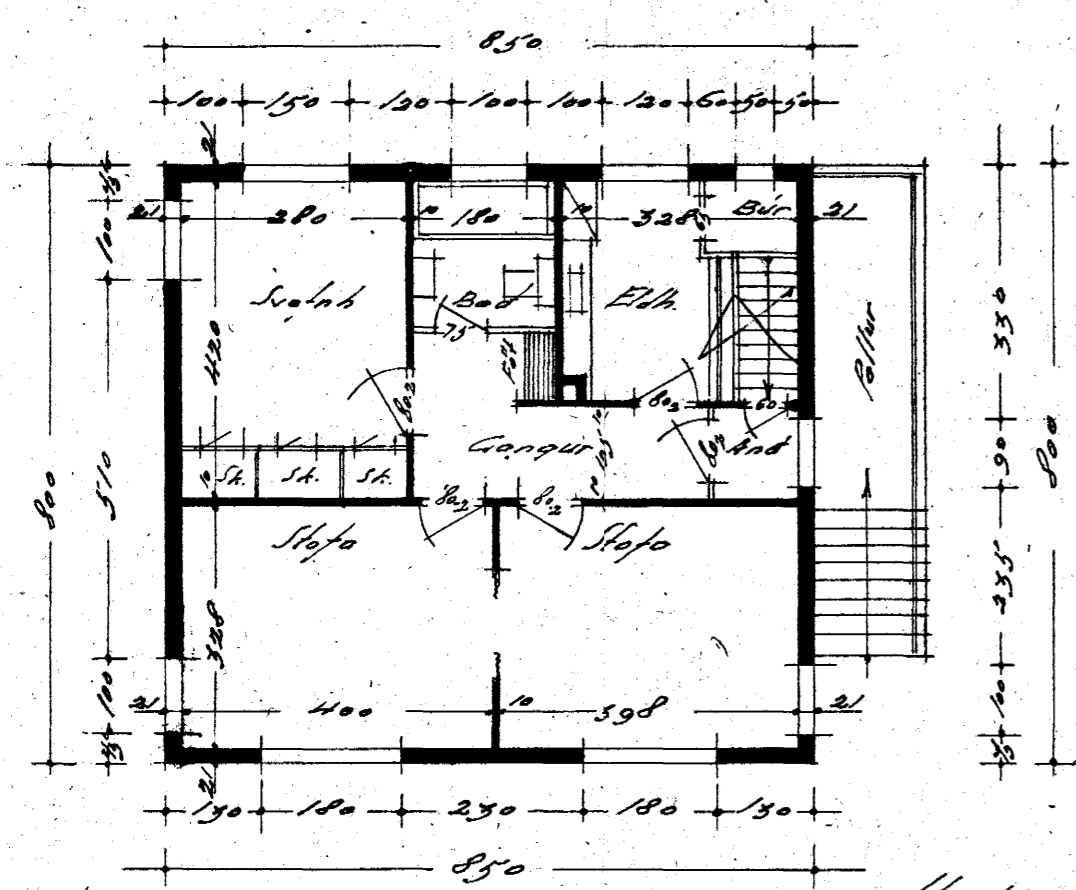
Norður



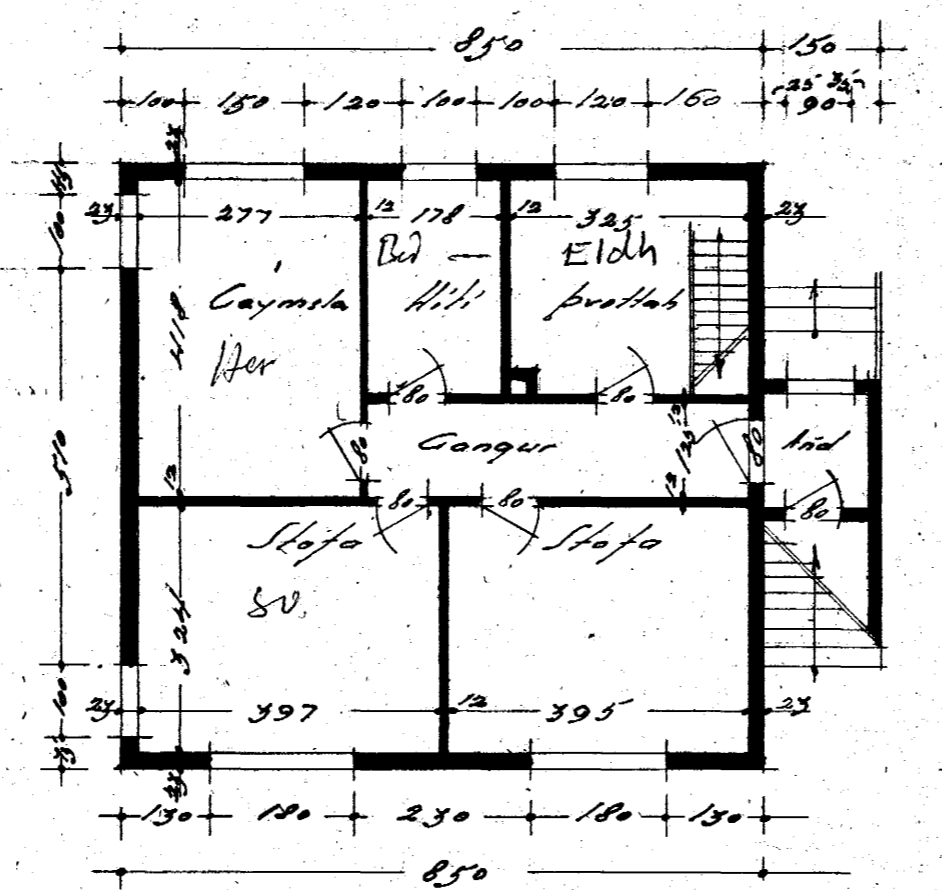
Suður



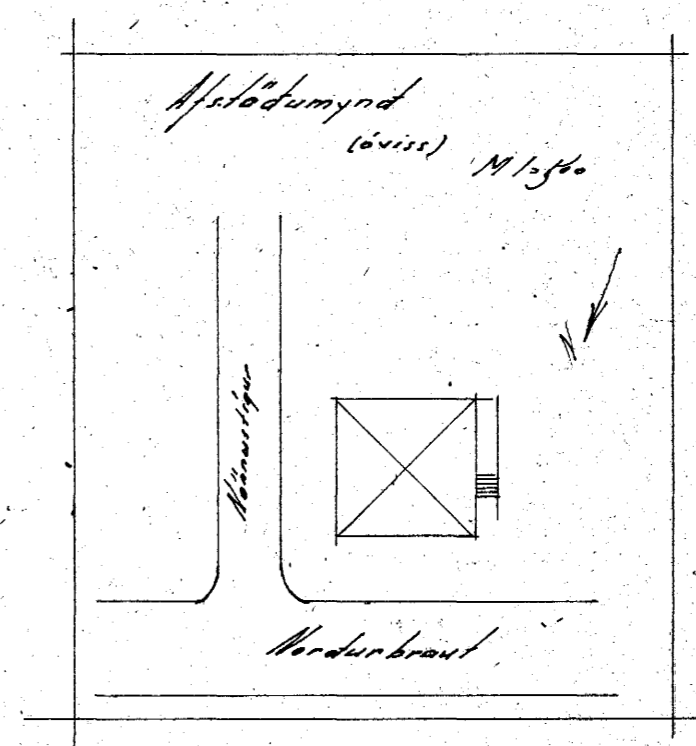
Skurður AA



Sumur



Kjallari



Hafnarfirði í okt. 1946
 Sig. Guðmundsson