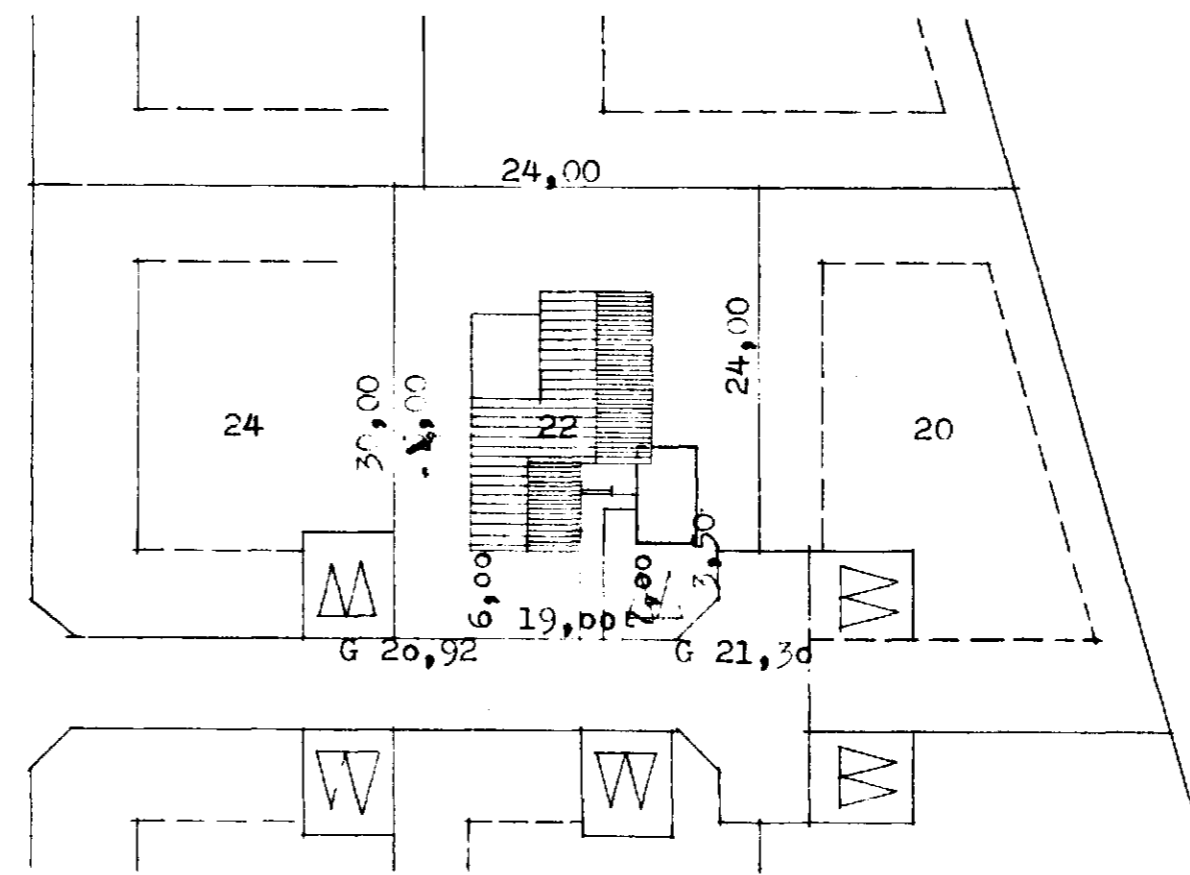


skurður A-A

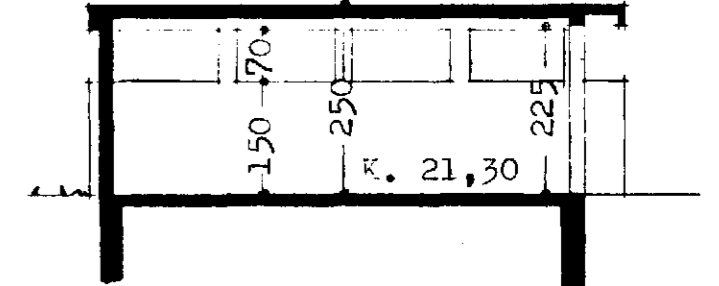
SKURÐUR A - A



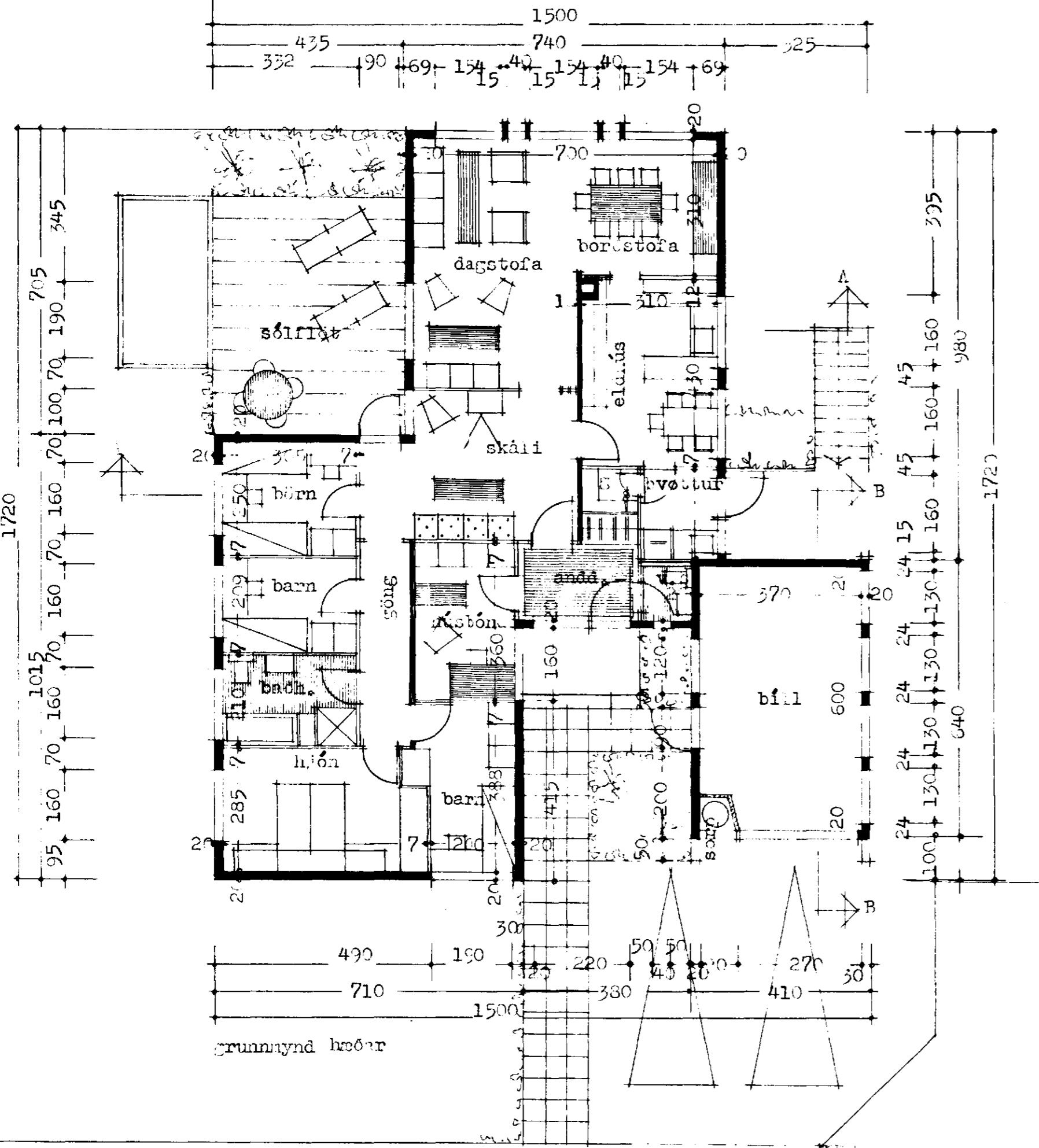
Afstæðing mynd m 1:500  
flatarmál húss 143,30 m<sup>2</sup>  
flatarmál bílg. 26,24 m<sup>2</sup>

Sambykkt á fundi byggingar-  
nefndar þ. 18. 10. 73  
BYGGINGARNEFNDIN  
HAFFARPIRMI  
E. Sigurðsson

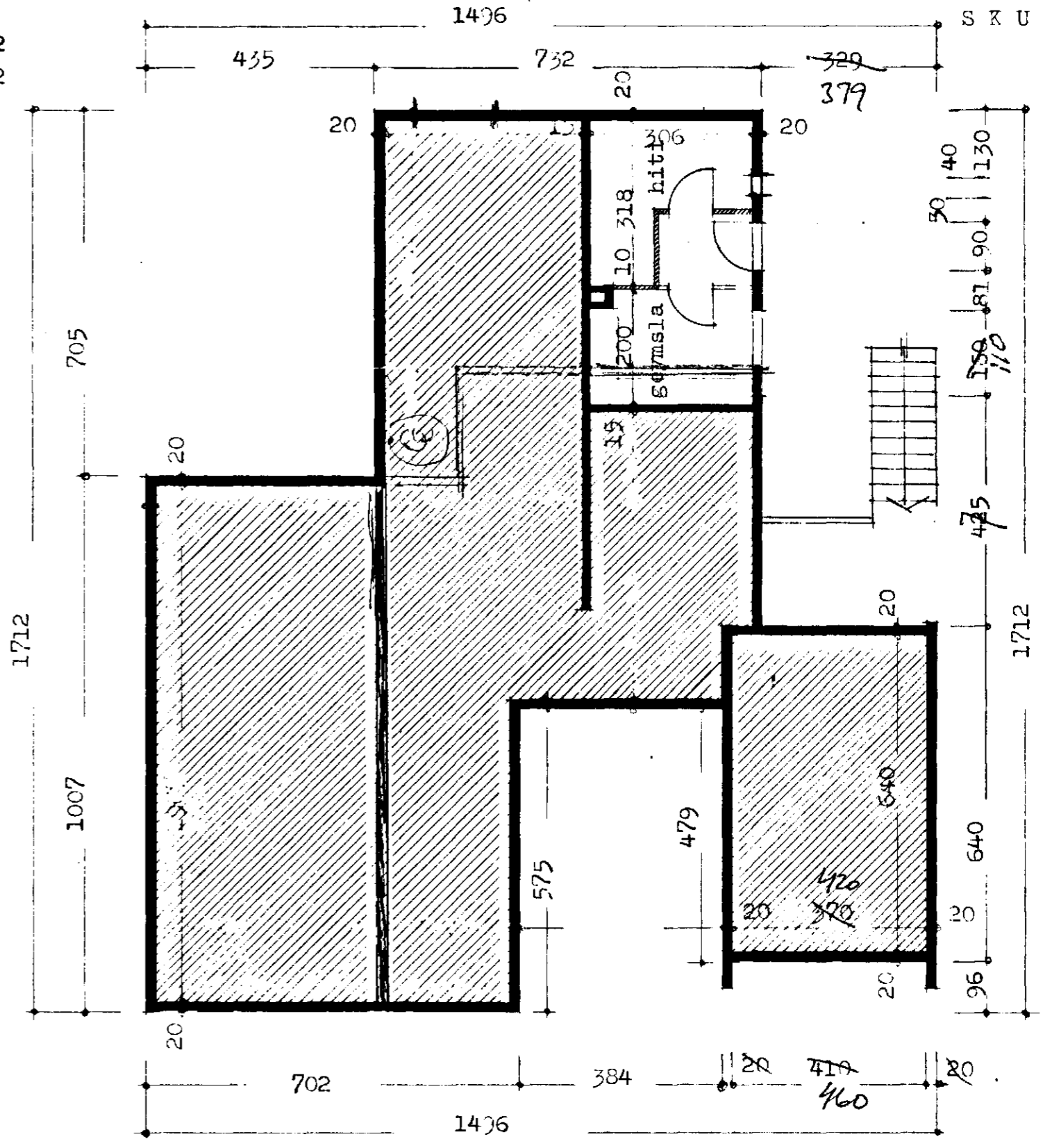
Brúttum á bílg samsetta  
22/10/73.



SKURÐUR B - B



grunnmynd hæðar



grunnmynd kjallara

Stöðla bílg  
3,2 m<sup>2</sup> + 2,15  
8 m<sup>3</sup>

Reykjaví: 1 júlí 1973  
Einar Sveinsson