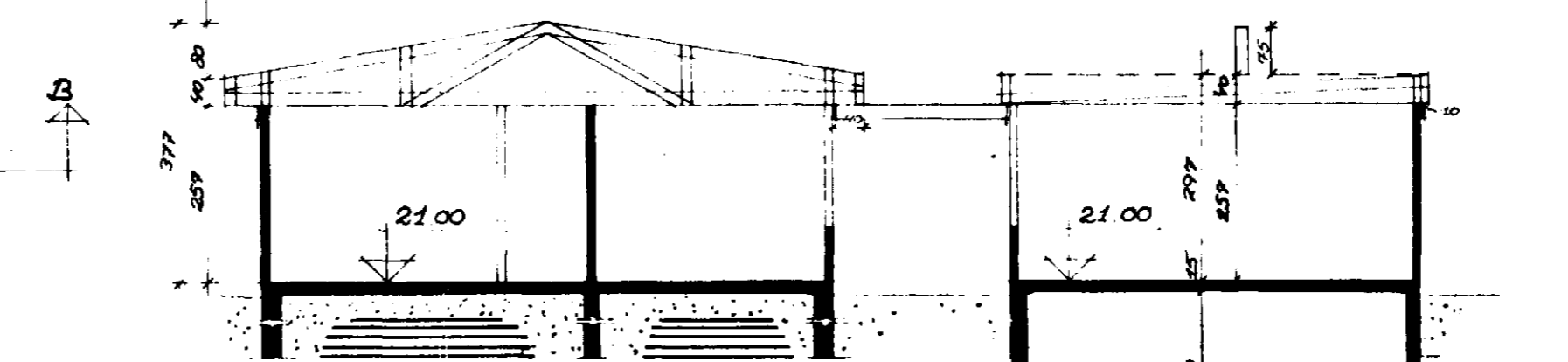
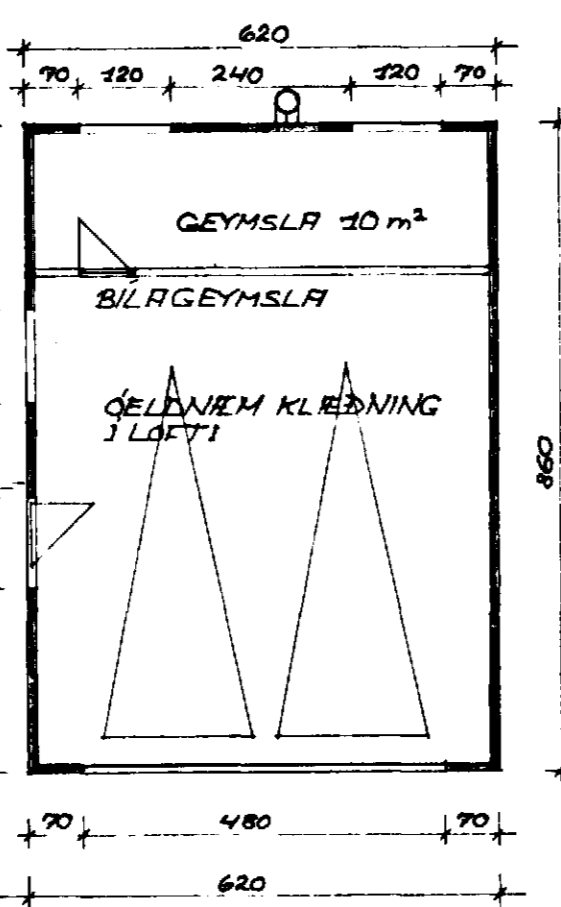
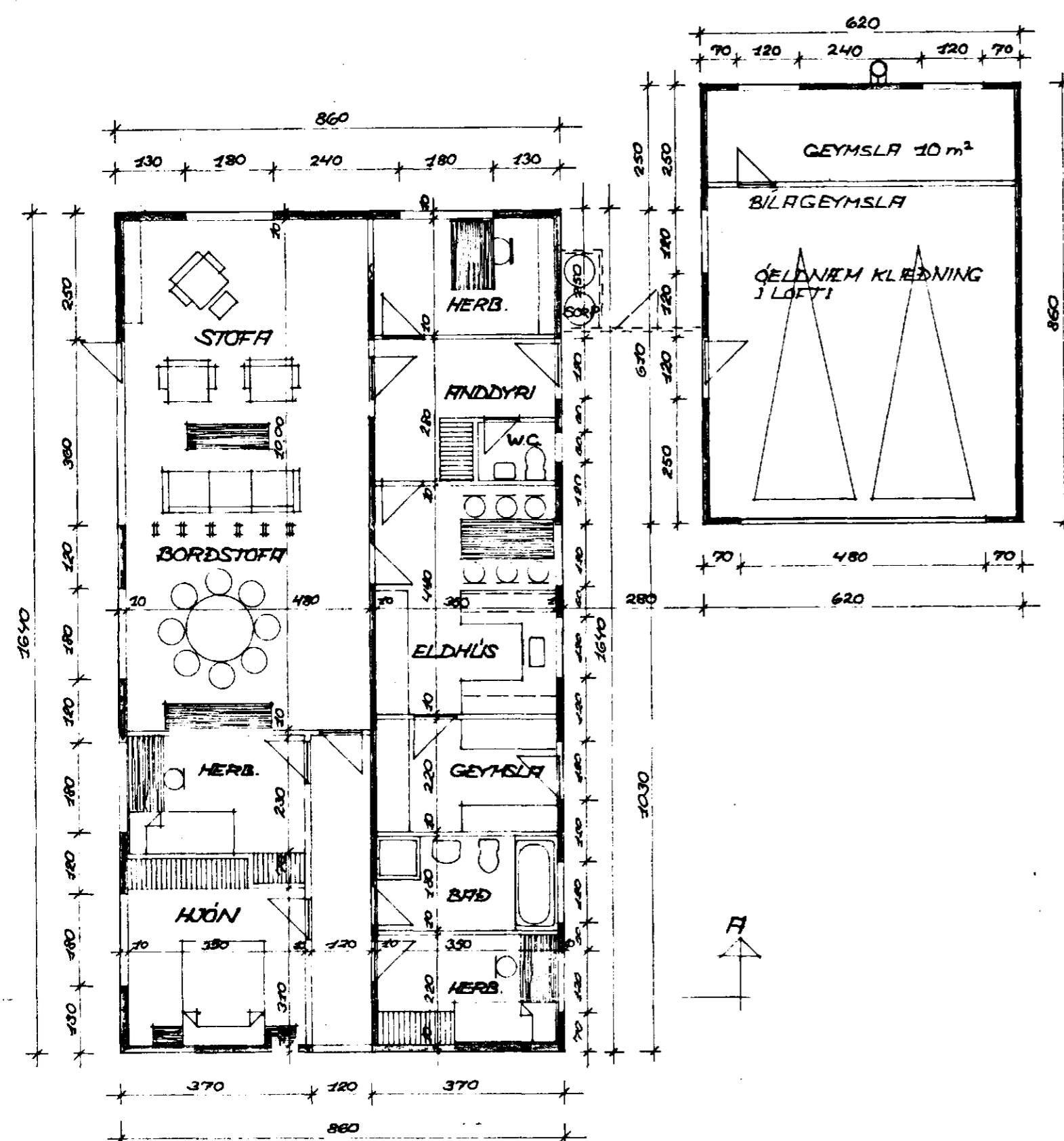


$8.60 \times 620 = 53,2m^2 \times 245 = 130.6m^3$

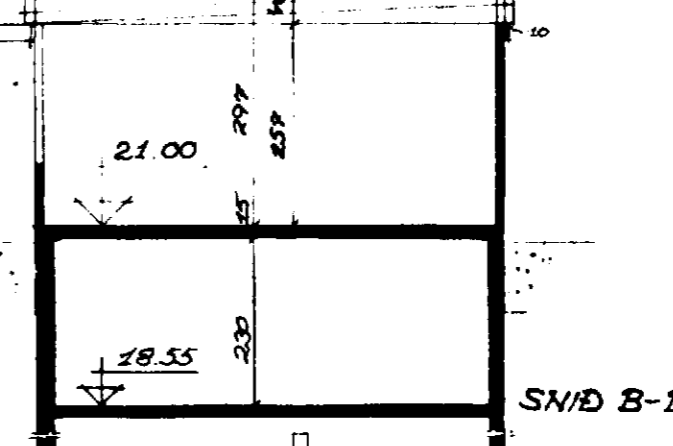
KJALLARI UNDIR BILG.

Samþykkt á fundi bygginga-
ráðs b. 13. 6. '73
BYGGINGARFRUMU
S. Gunnarsson

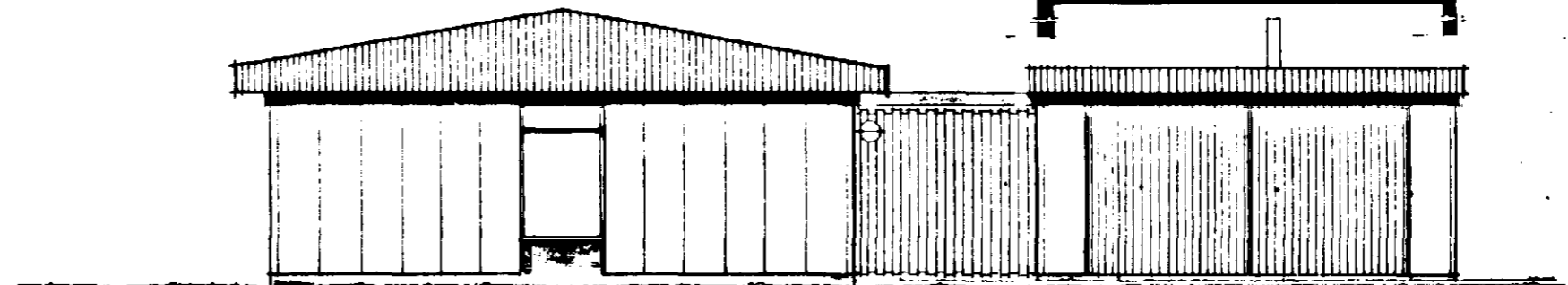
Þ. Skúli at Reykhöfn er
Steypur og inn. m. m. m. T. Sig.



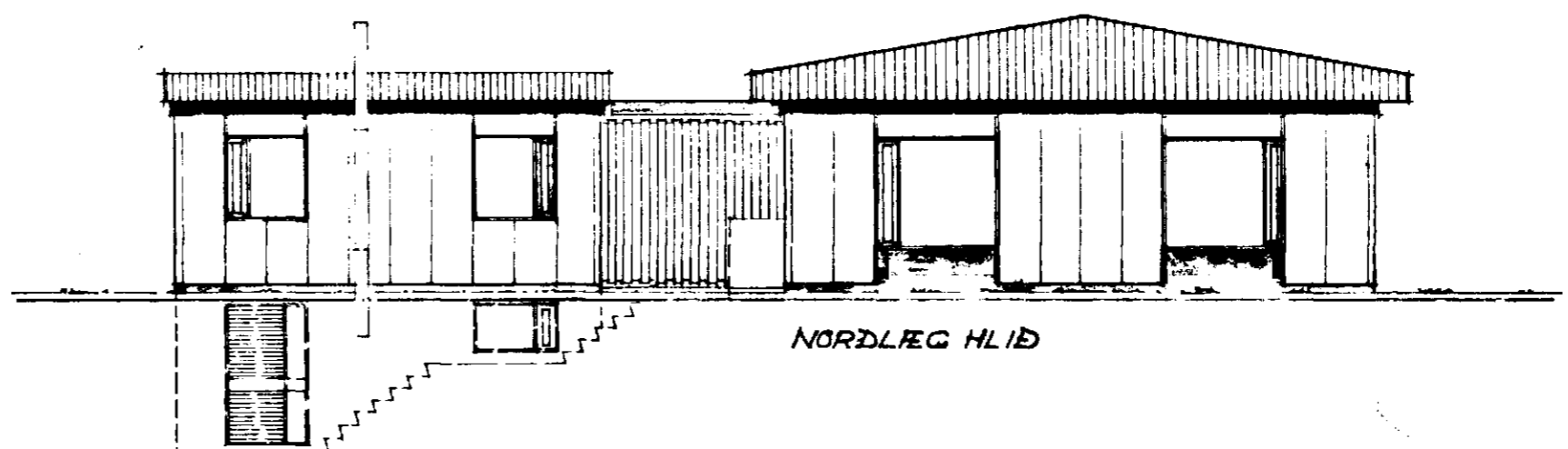
SNID A-A



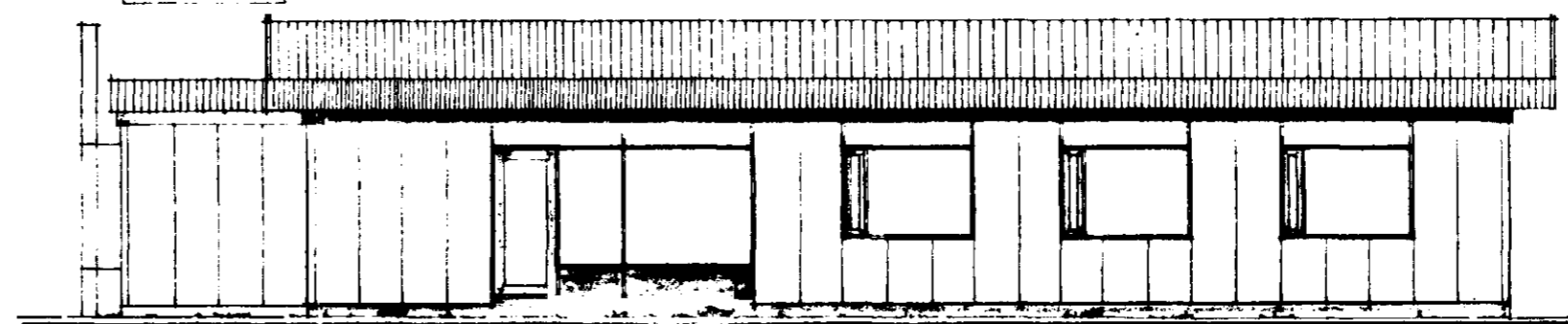
SNID B-B



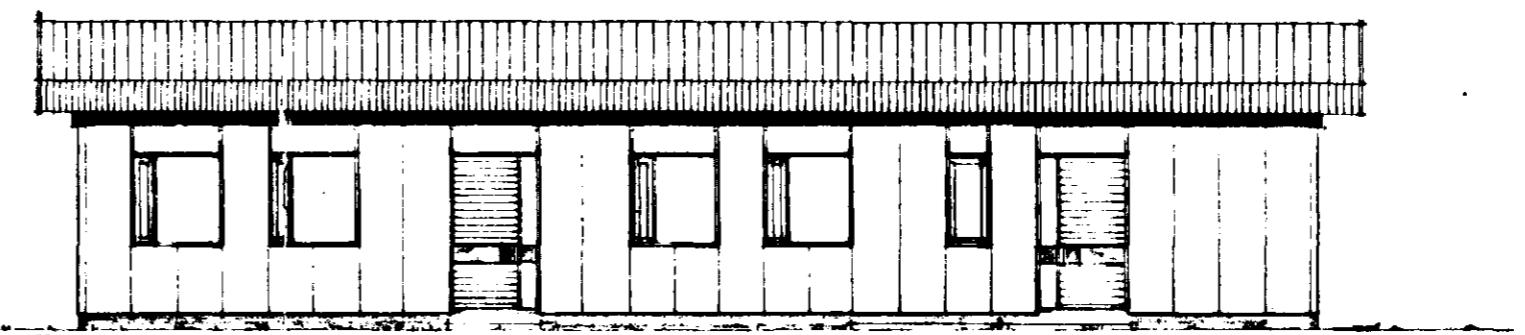
SÚÐLÆG HLÍÐ



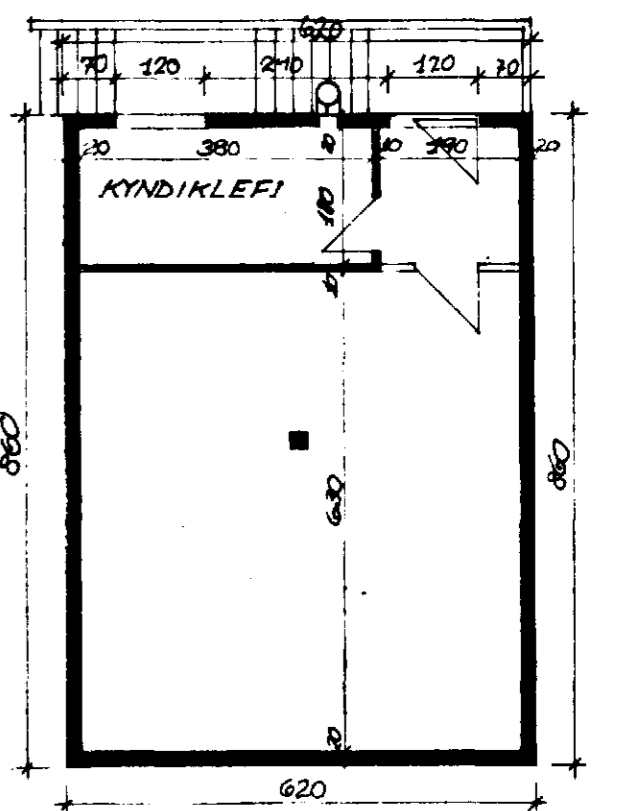
NORÐLÆG HLÍÐ



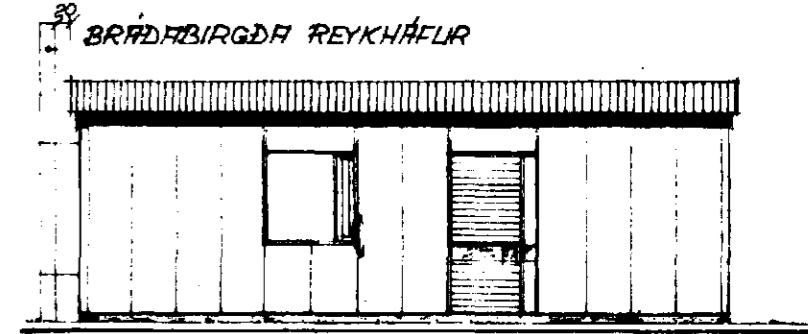
VESTLÆG HLÍÐ



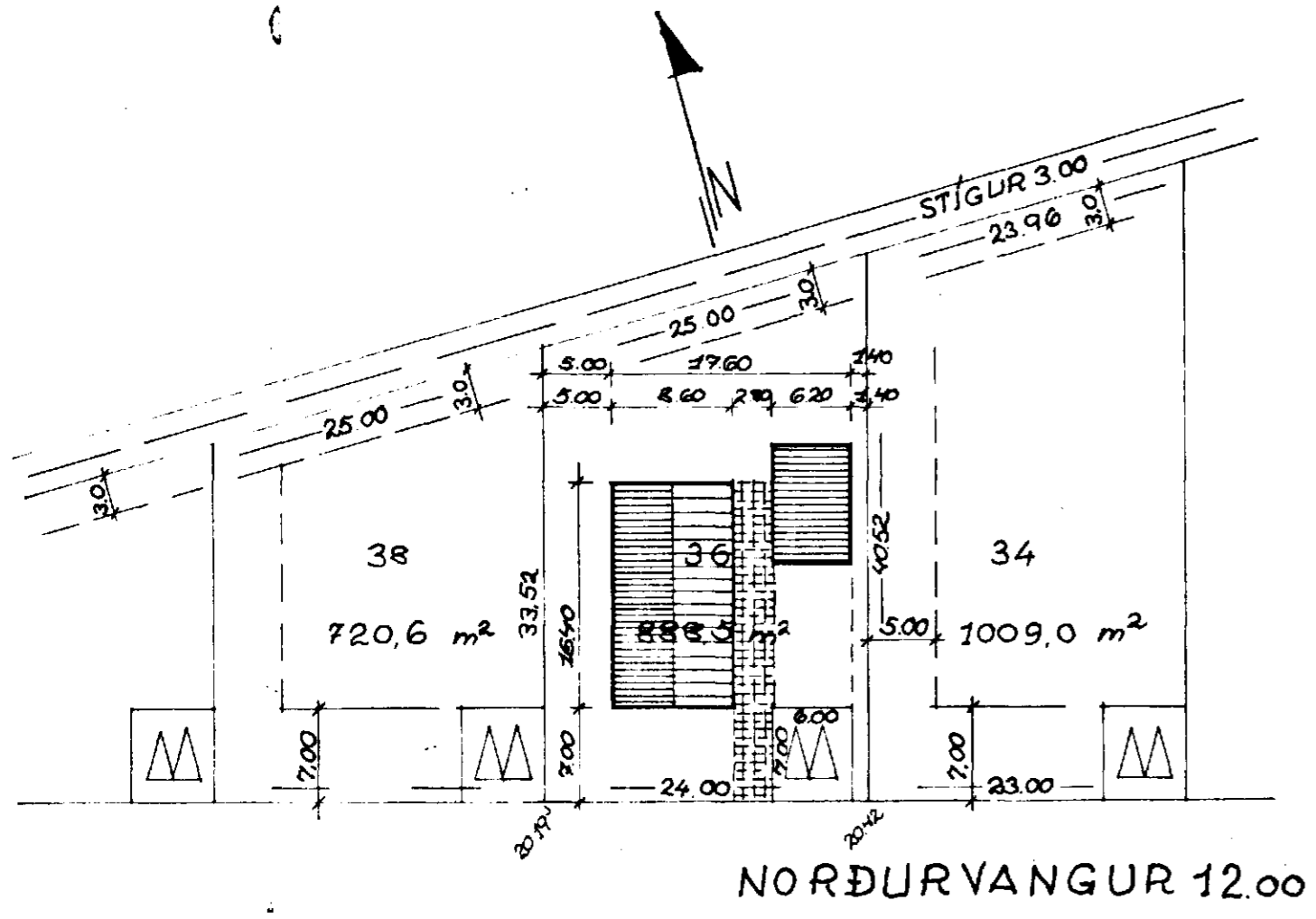
AUSTLÆG HLÍÐ



BILAGEYMSLA KJALLARI GRUNNMYND
KJALLARI 53 m² BRÚTTÓ.



BRÁÐRÁRGAR REYKHÖFN



NORÐURVANGUR 12.00

ATHUGASEMDIR:
HÚS BRÚTTÓ: 141 m² HÚS NETTÓ: 126 m²
BILSKÚR BRÚTTÓ: 53 m² BILSKÚR NET: 44 m²
HÚS + BILSKÚR BRÚTTÓ: 194 m²
LÖÐ: 888.5 m²
NOTKUNARGRÁÐA: 0.22

KVARDI 12.00 NGB-ALT 121 REYKJAVIK SIM. 2634

NORÐLURVINGLAR 36 HAFNARFARÐI	1:100, 1:500.	3-72-33.
GRUNNMYND, LITLITSMYNDIR, SNID OG AFSTÖÐLUMYND.	10. 11. '72	28.5.'73 <i>RS</i>
		1-A-1.

Arni S. Gunnarsson

