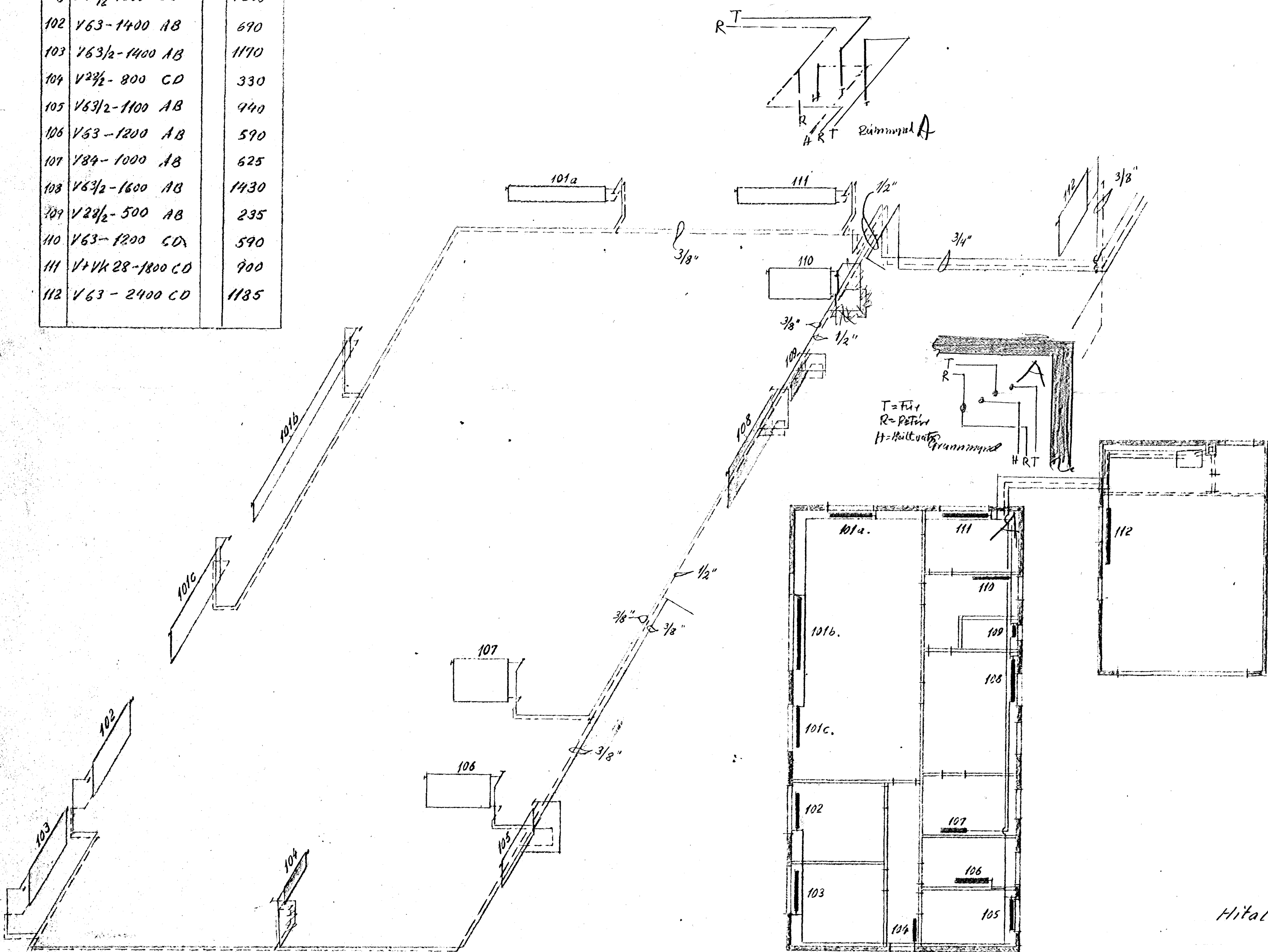


| Runtal | | st |
|--------|-----------------|------|
| Nr. | Tilvisun | 40°C |
| 101a | V28½-1800 CD | 730 |
| -b | V28½-3600 CD | 1450 |
| -c | V63½-1800 CD | 1590 |
| 102 | V63-1400 AB | 690 |
| 103 | V63½-1400 AB | 1170 |
| 104 | V28½-800 CD | 330 |
| 105 | V63½-1100 AB | 940 |
| 106 | V63-1200 AB | 590 |
| 107 | V84-1000 AB | 625 |
| 108 | V63½-1600 AB | 1430 |
| 109 | V28½-500 AB | 235 |
| 110 | V63-1200 CD | 590 |
| 111 | V+VK 28-1800 CD | 900 |
| 112 | V63-2400 CD | 1185 |



Hitalögn: Norðurvangur 36 HF.
 Skapst. Júlí 73 Hljó. 4.