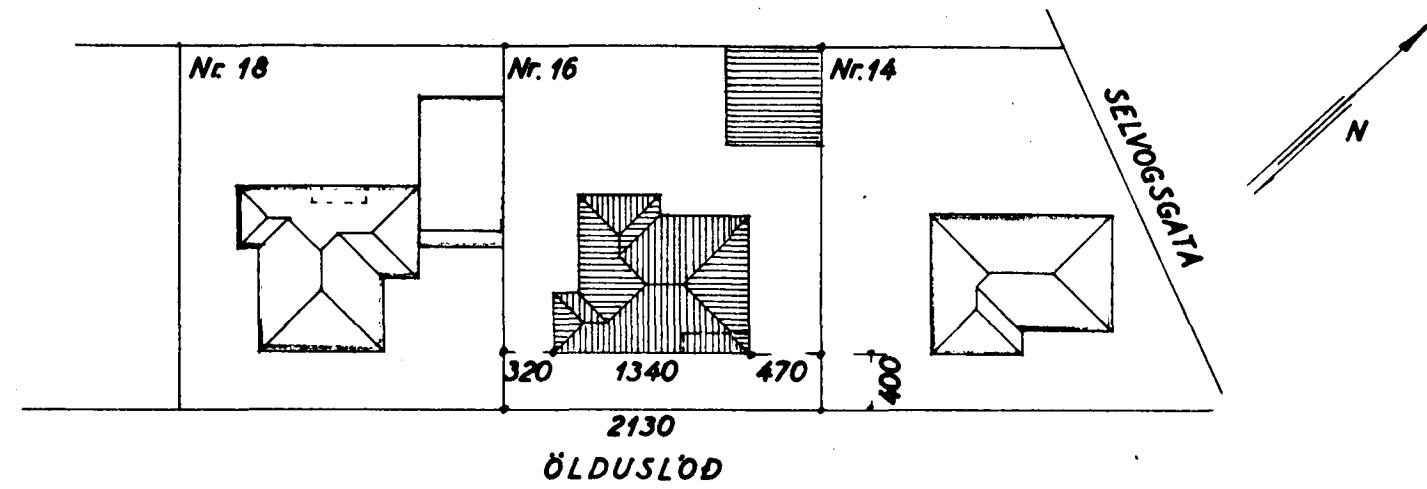




Ölduslóð



STÆRD:

Hús: kjallari 117,6 m²

I. hæð 117,6 m²

II. hæð 124,2 m²

990,0 m²

Bílg: 429 m²

1050 m²

L 68: 519,1 m²

Samþykkt á fundi bygginga-
nefndar þ. 17 / 2 / 1961

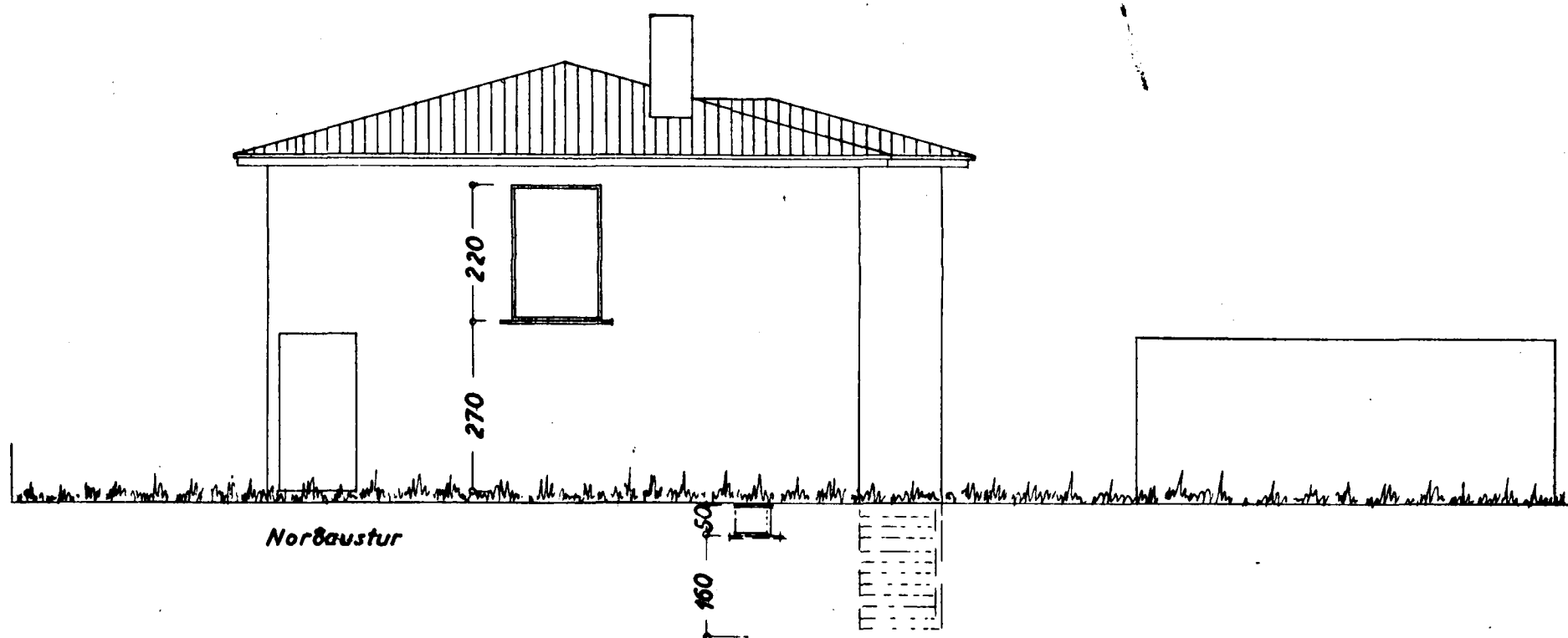
BYGGINGAFULLTRÚINN
f. h. I HAFNARFIRÐI

[Signature]

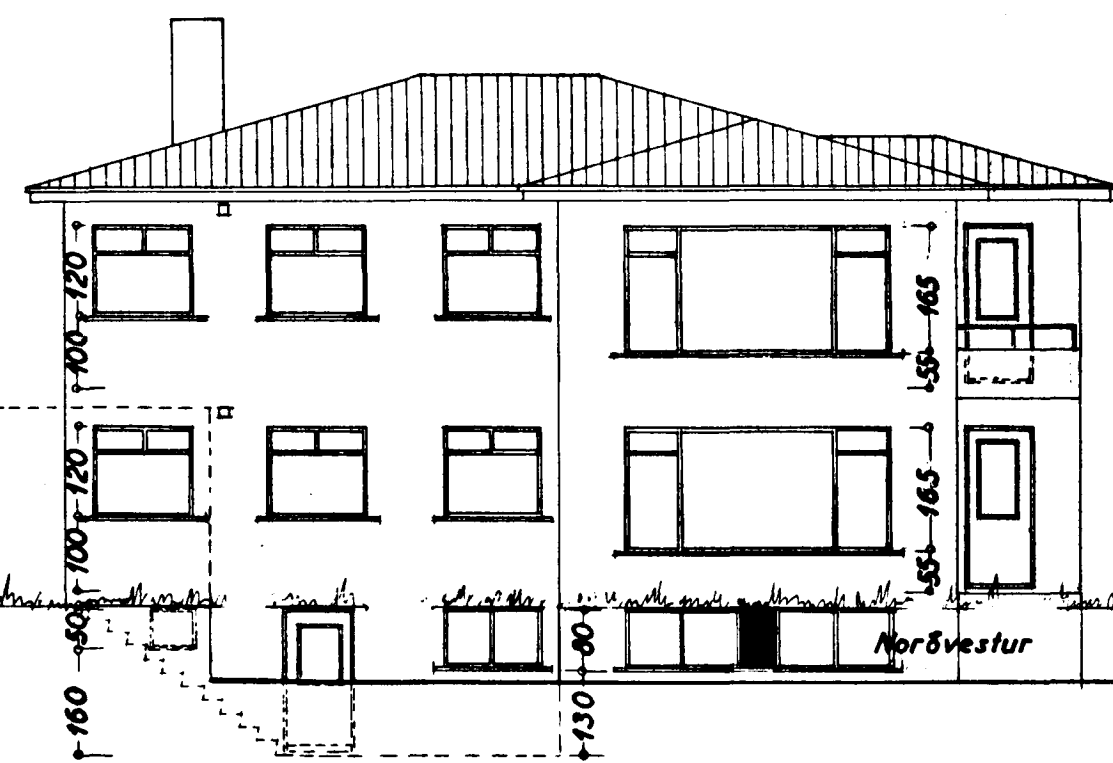
Tryggvi Stefánsson
HÚSASMÍÐAMEISTARI:

Guðmundur P. Stefánsson
MÜRARAMEISTARI:

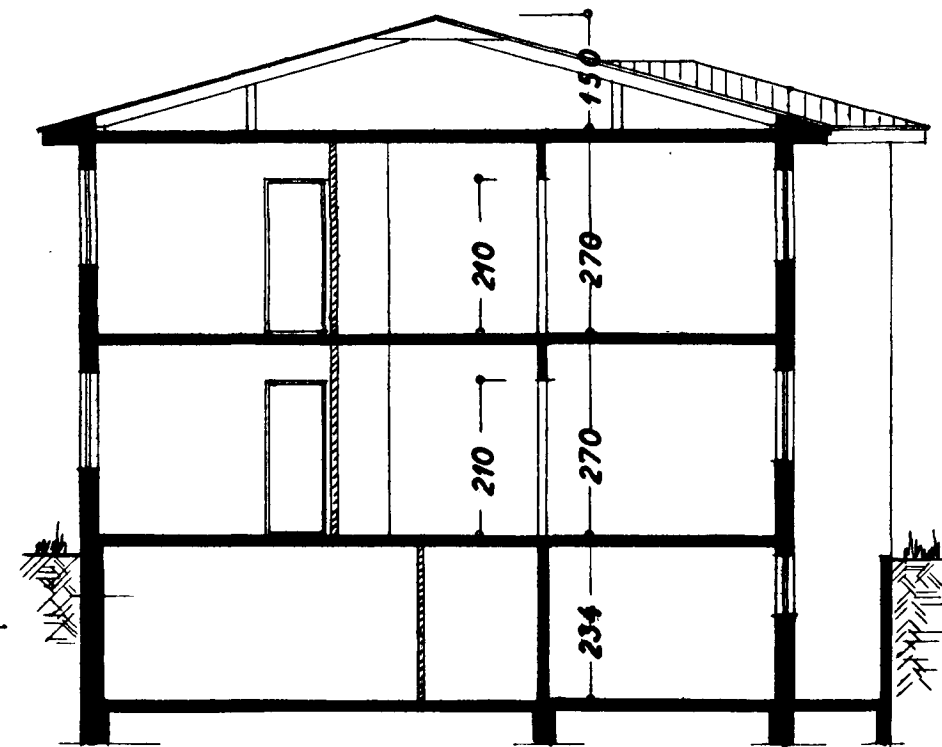
PIPULAGNINGAMEISTARI:
[Signature]



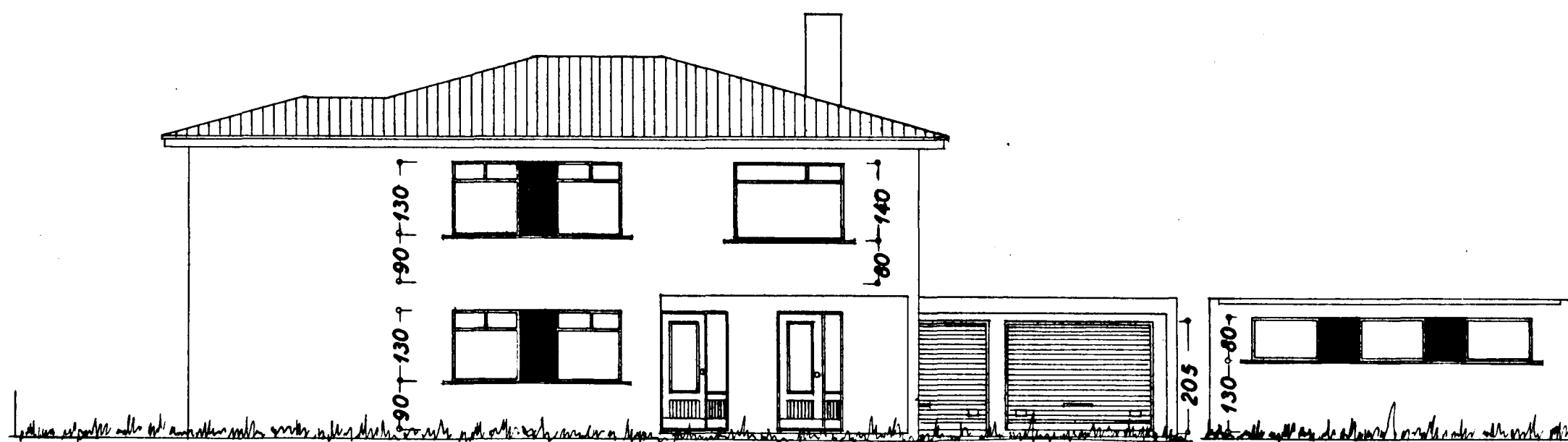
Norðaustur



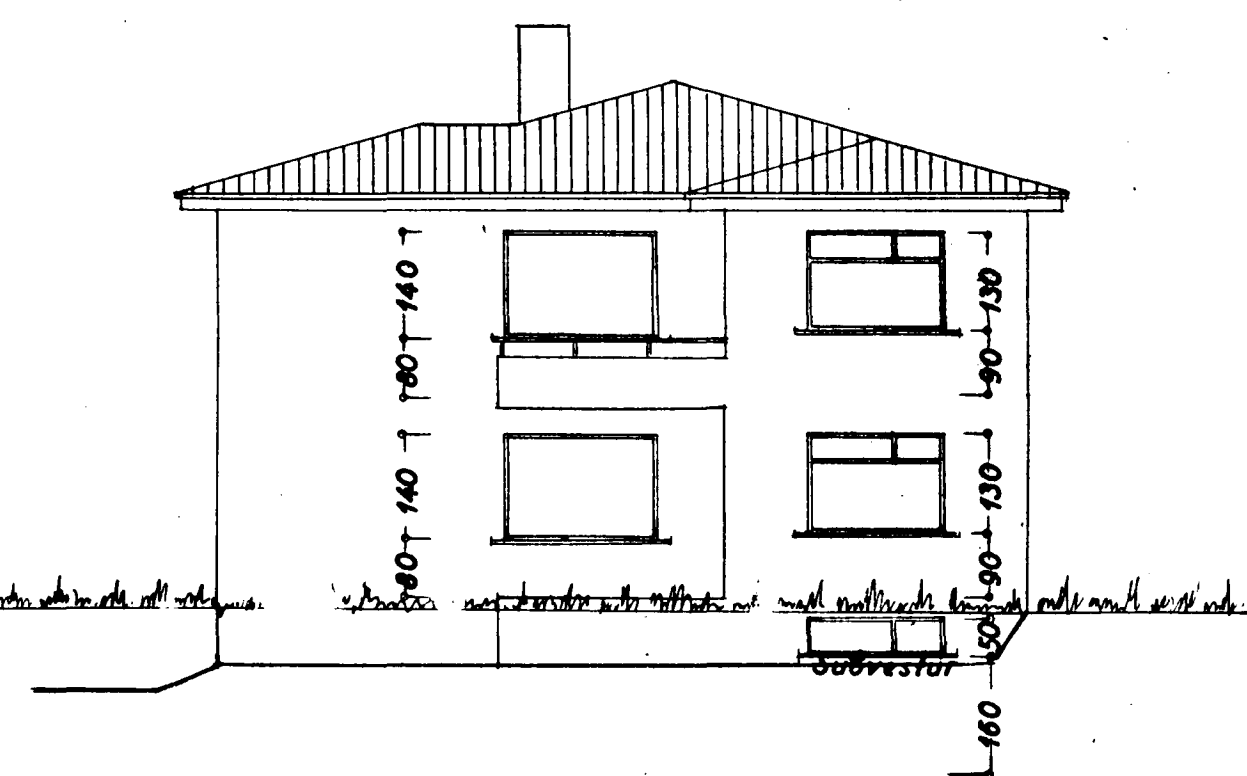
Norðvestur



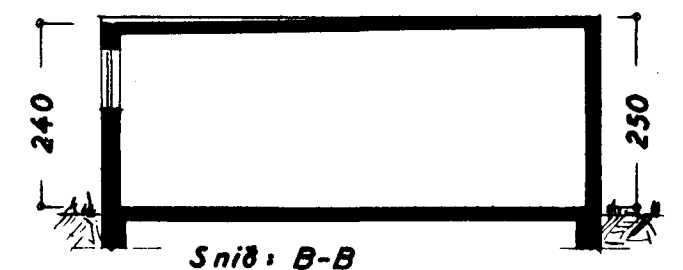
Snið: A-A



Suðaustur (ÖLDUSLÓÐ)



Suðvestur



Snið: B-B

ÖLDUSLÓÐ NR. 16. Blað 1

Óttit 1:100

Snið

Afstöðumynd 1:500

Hafnarfirdi 2. júlí 1963
F. Sigurðsson