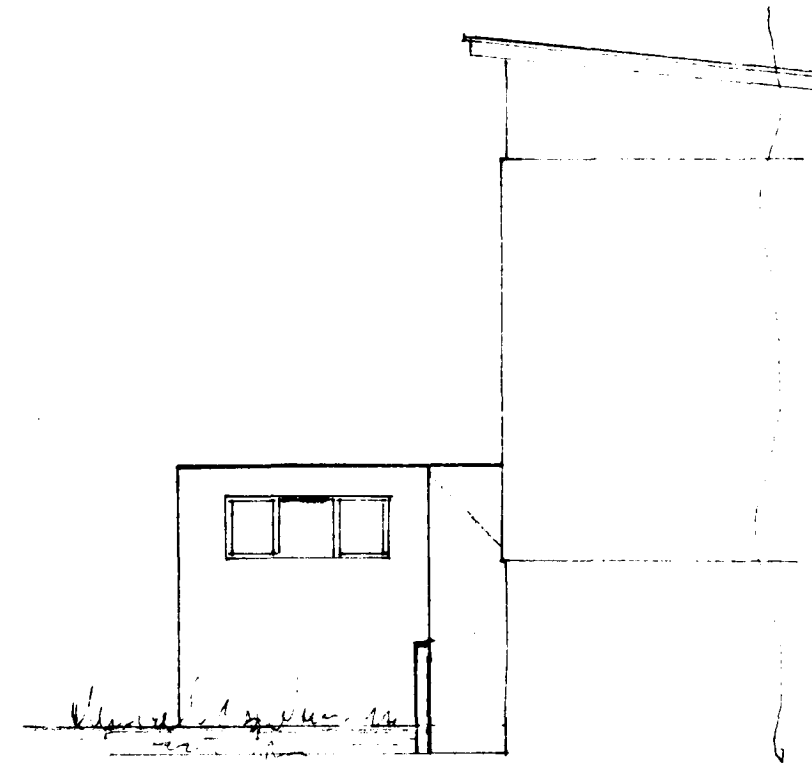
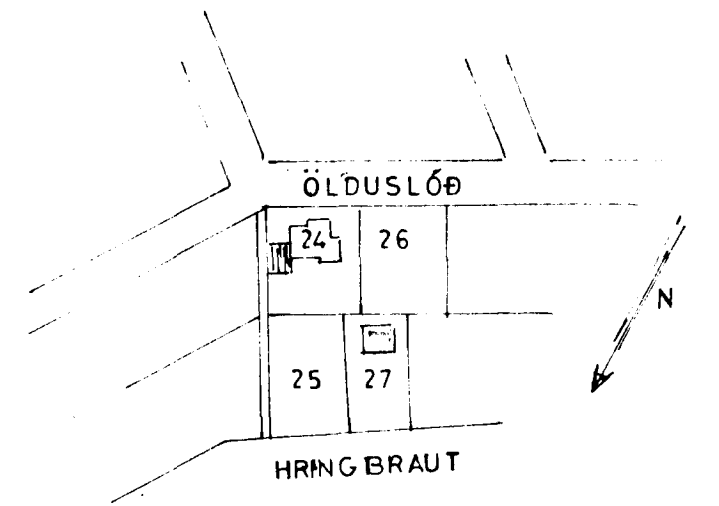


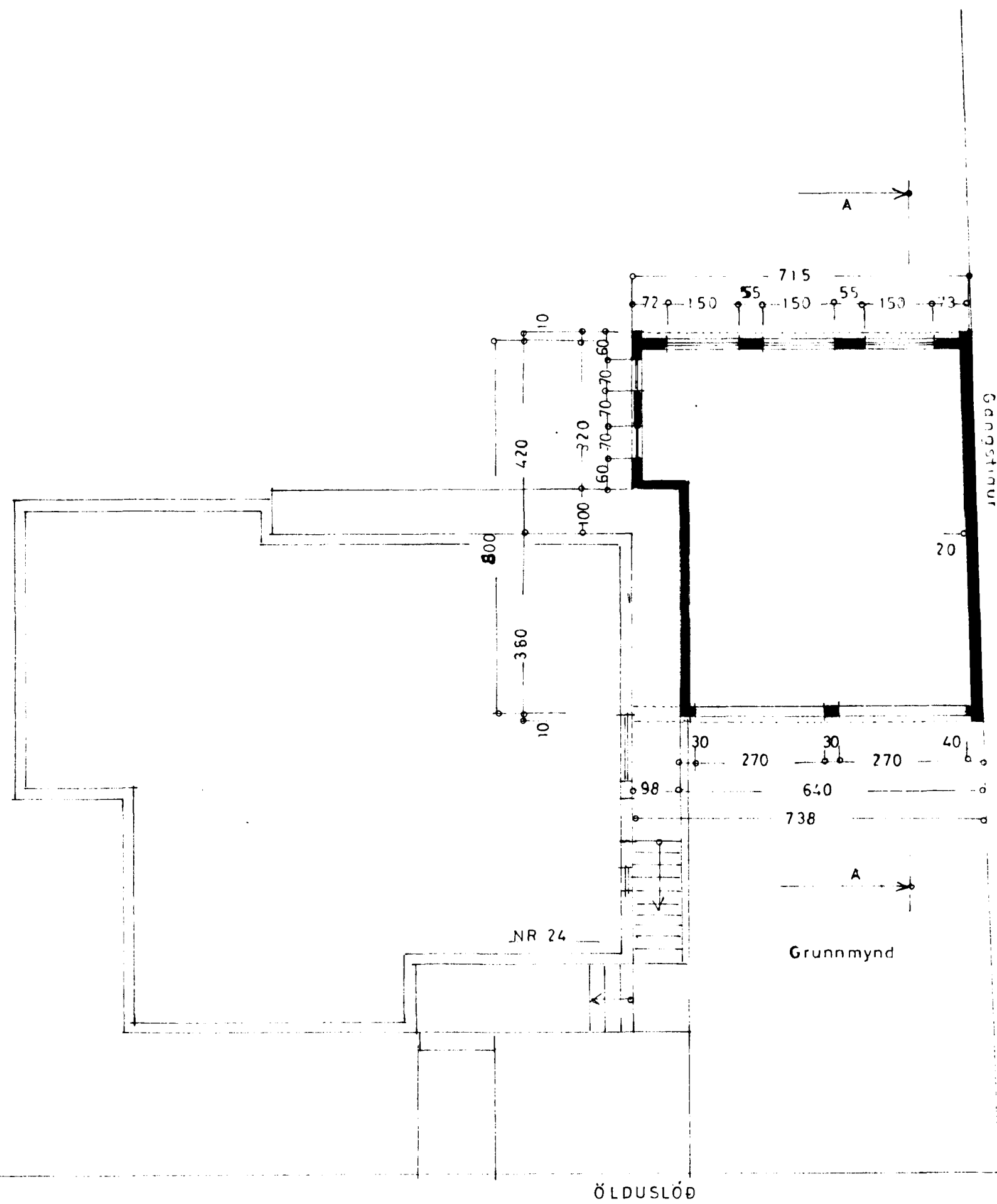
Suðaustur



Suðvestur

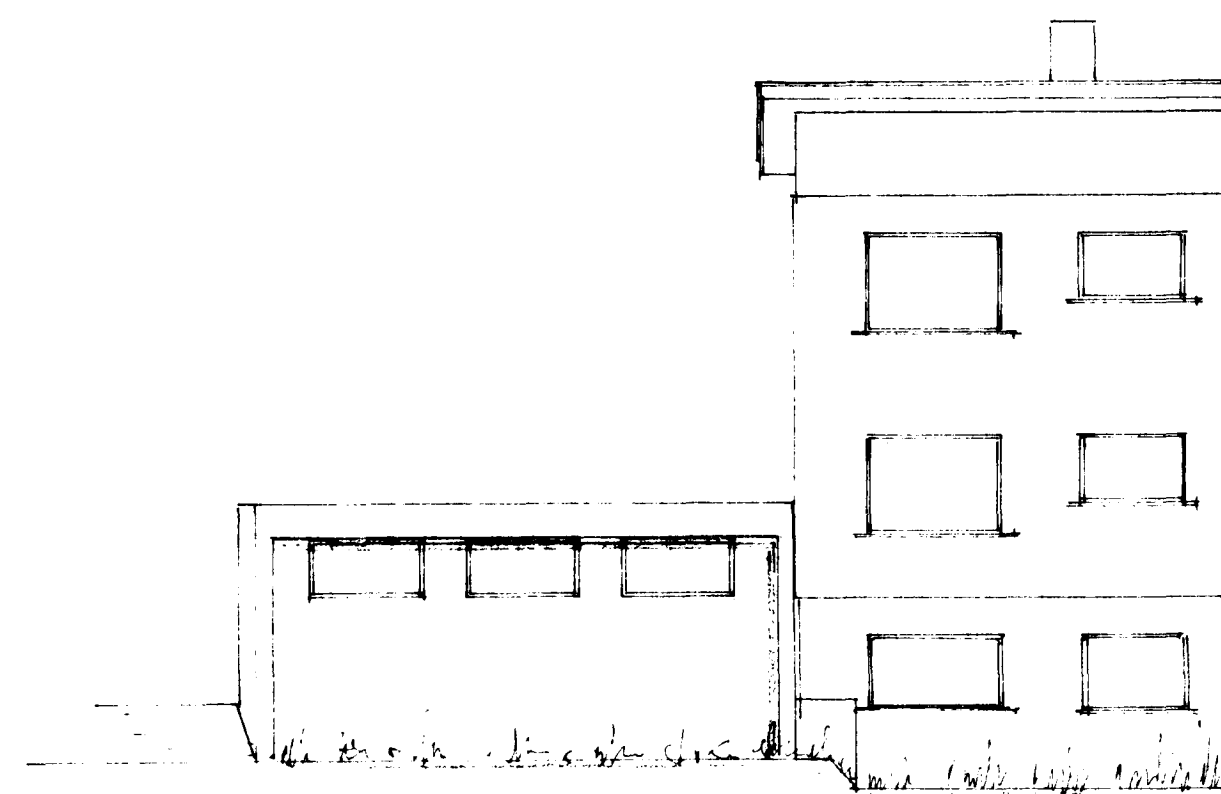


Afstöðumynd  
1:2000

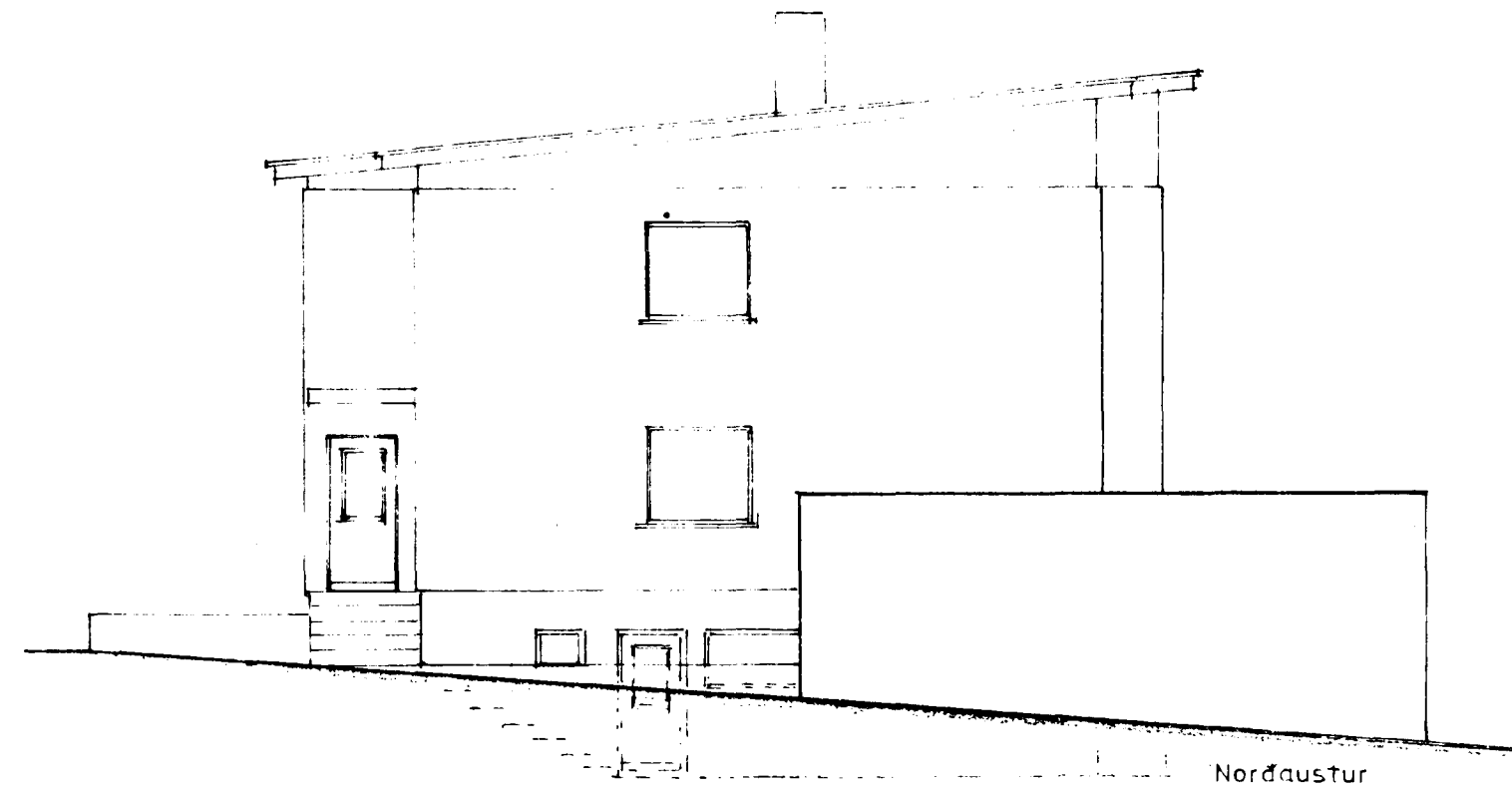


ÖLDUSLÓÐ

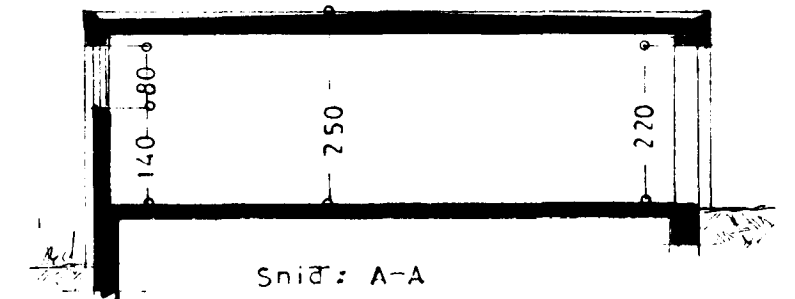
Grunnmynd



Norðvestur



Norðaustur



Snid: A-A

STÆRÐ:  $53,4 \text{ m}^2$ ,  $133,0 \text{ m}^3$   
 $\frac{1}{4} \times 8 = 848,-$   
 $\frac{2}{2} \times 29526,- = 29526,-$   
 $30,374,-$

**ÖLDUSLÓÐ NR 24**  
BILGEYMSLA

Útlit }  
 Grunnmynd } 1:100  
 Snid }  
 Afstöðumynd 1:2000

Hafnarvíði 3. apríl 1973  
 S. Jónsson  
 TEIKN.