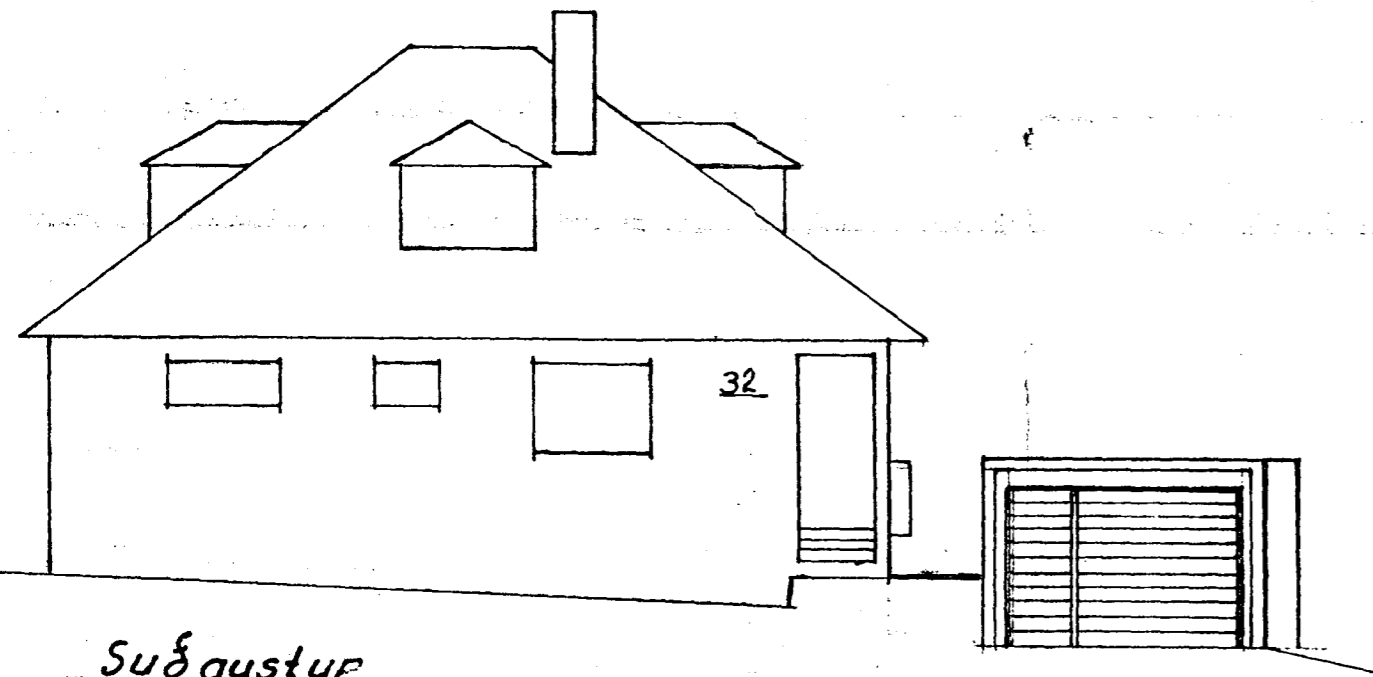
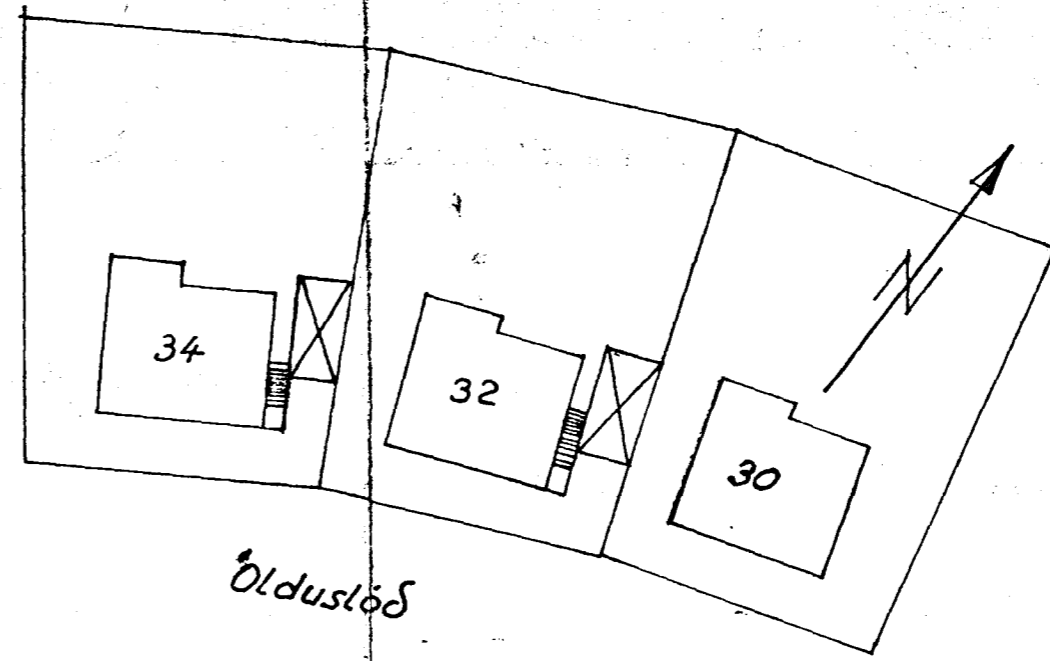
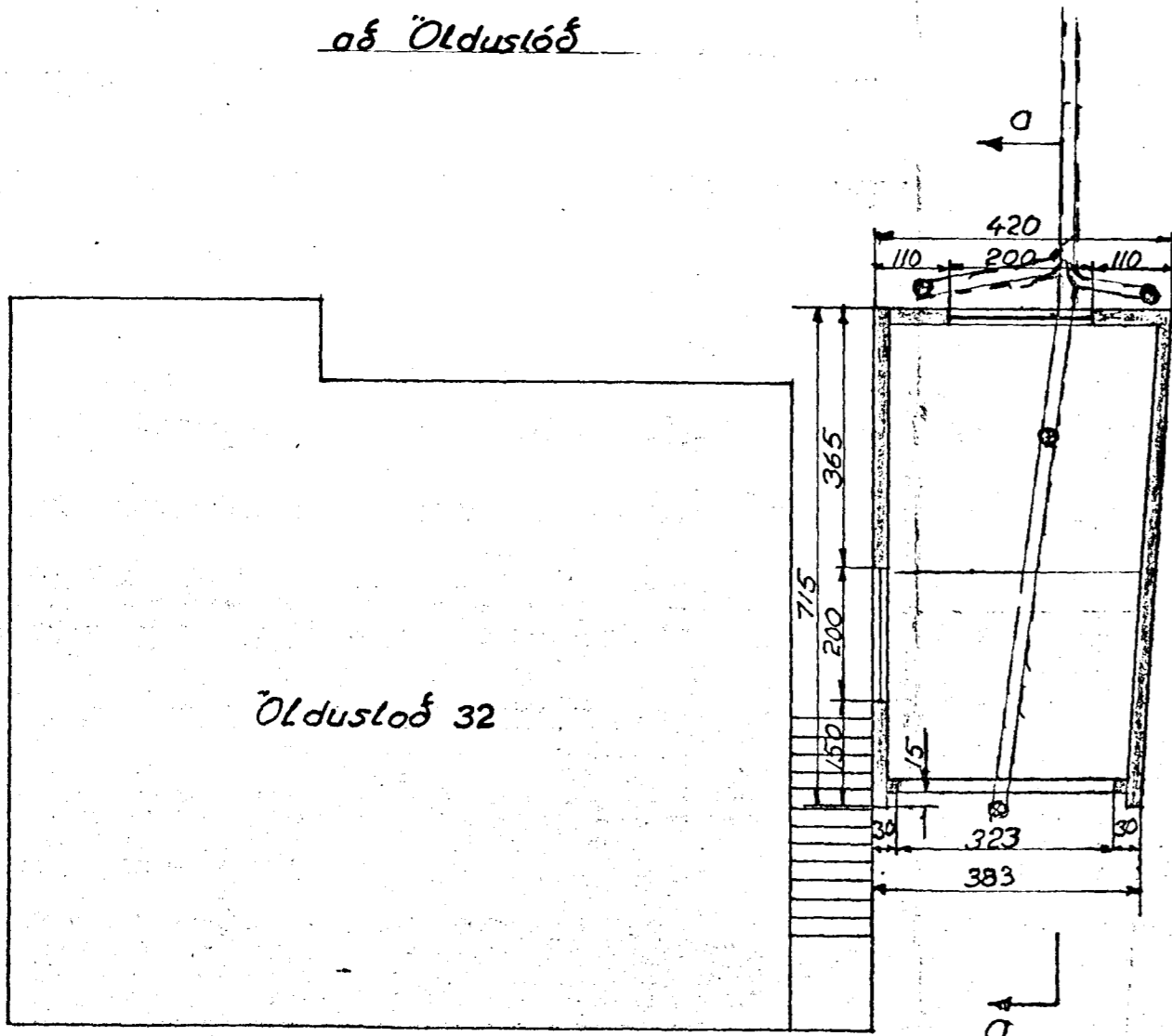
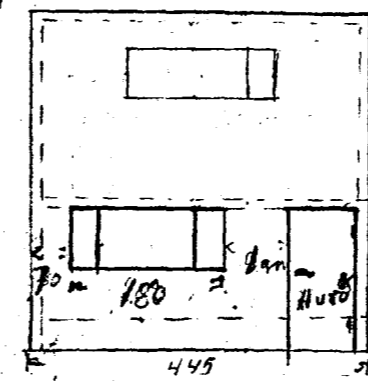
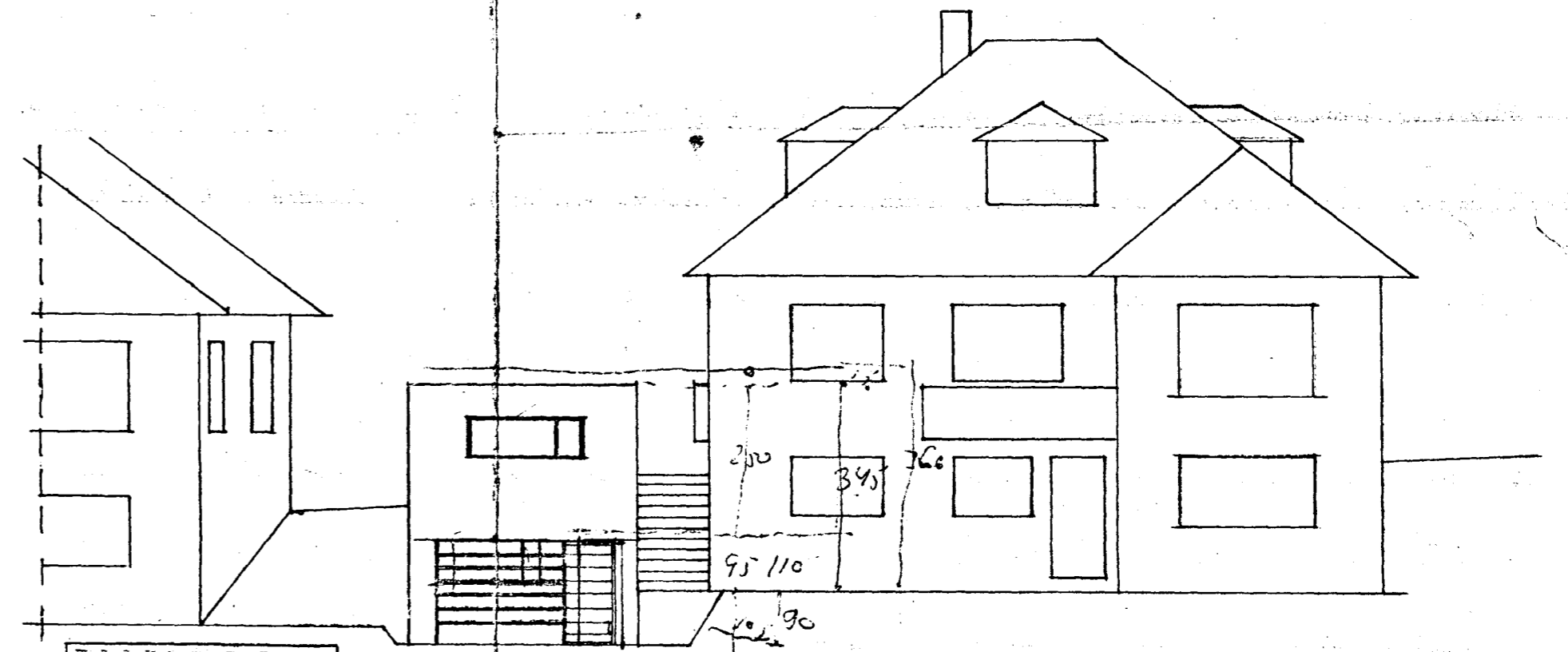
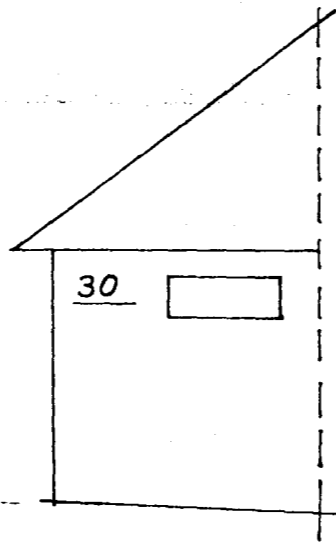


Afstöðumynd  
kvarði 1:500

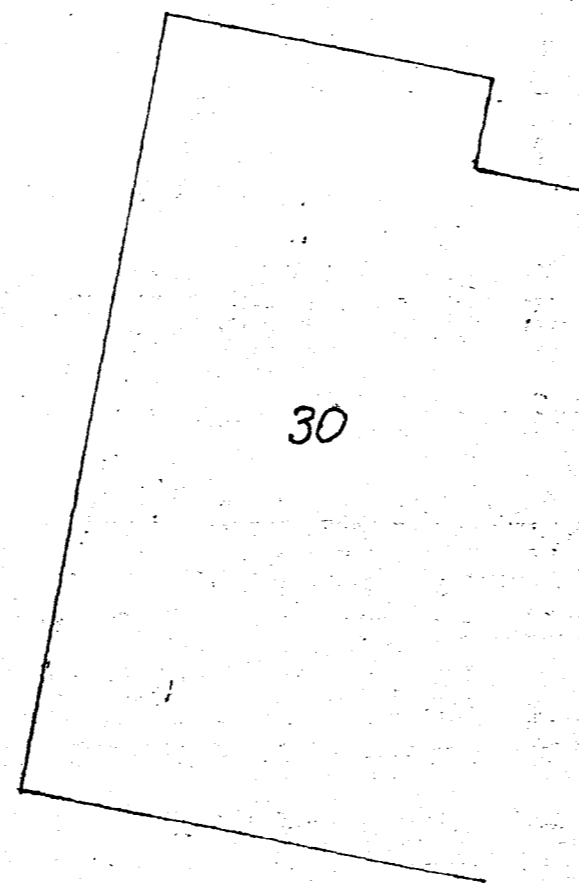


Suðaustur  
áð Öldustöð



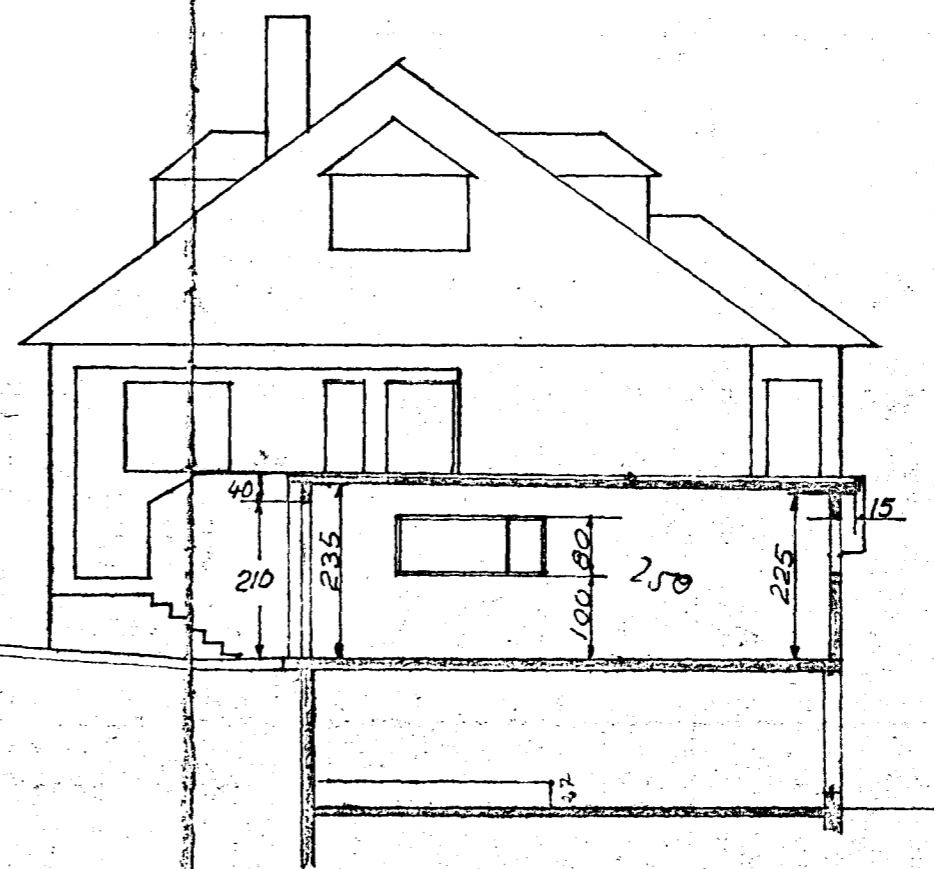
Öldustöð 32

Grunnmynd  
kvarði 1:100



Skurðmynd  
a-a

$$\frac{383+420}{2} \times 7 = 28,0m^2 = 175m^3$$



Samþykkt á fundi bygginga-  
nefndar þ. 5/2 1975  
BYGGINGAFULLTRÚINN  
Í HAFNARFIRÐI  
E. Sigurðsson

Byggingarleggi endursent 16/6 '82

Bilageymsla áð Öldustöð 32

Eig: Hans P. Lindberg

9880-0320

02

Hafnarfirði í Mars 1975  
forsetinn Einarsson — Jón Palmason

Handwritten notes in the bottom left corner, including 'Hafnarfirði', 'Byggingarleggi', and '16/6 '82'.