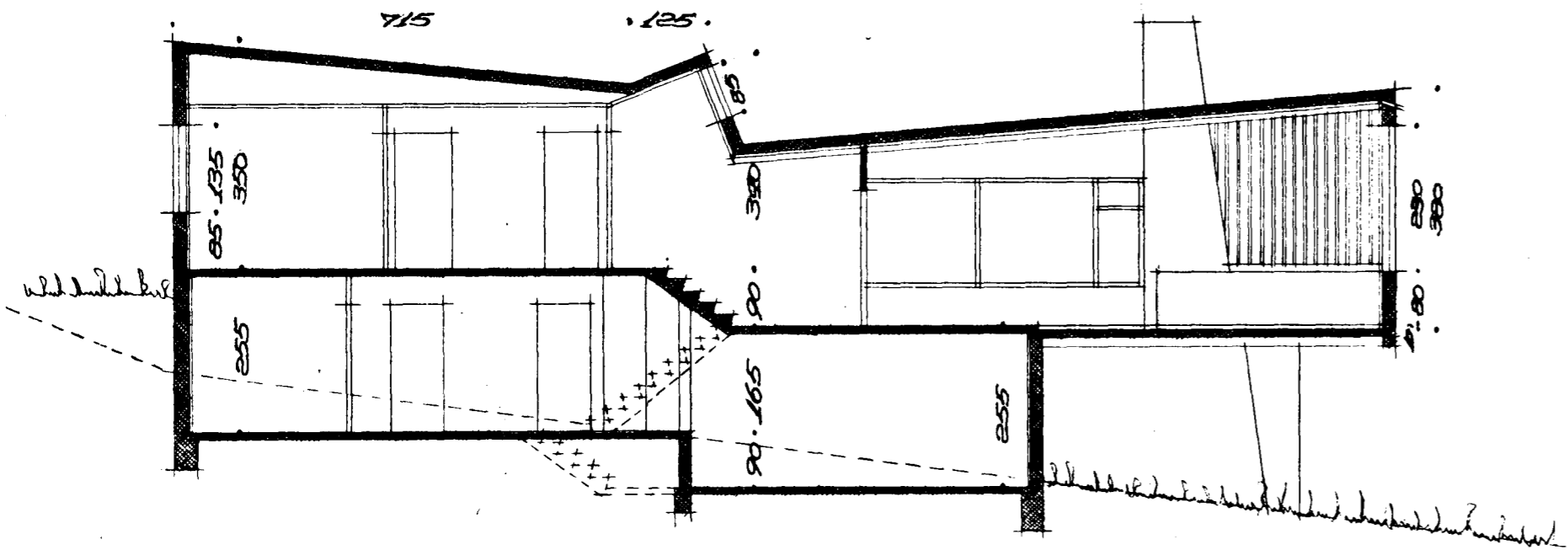
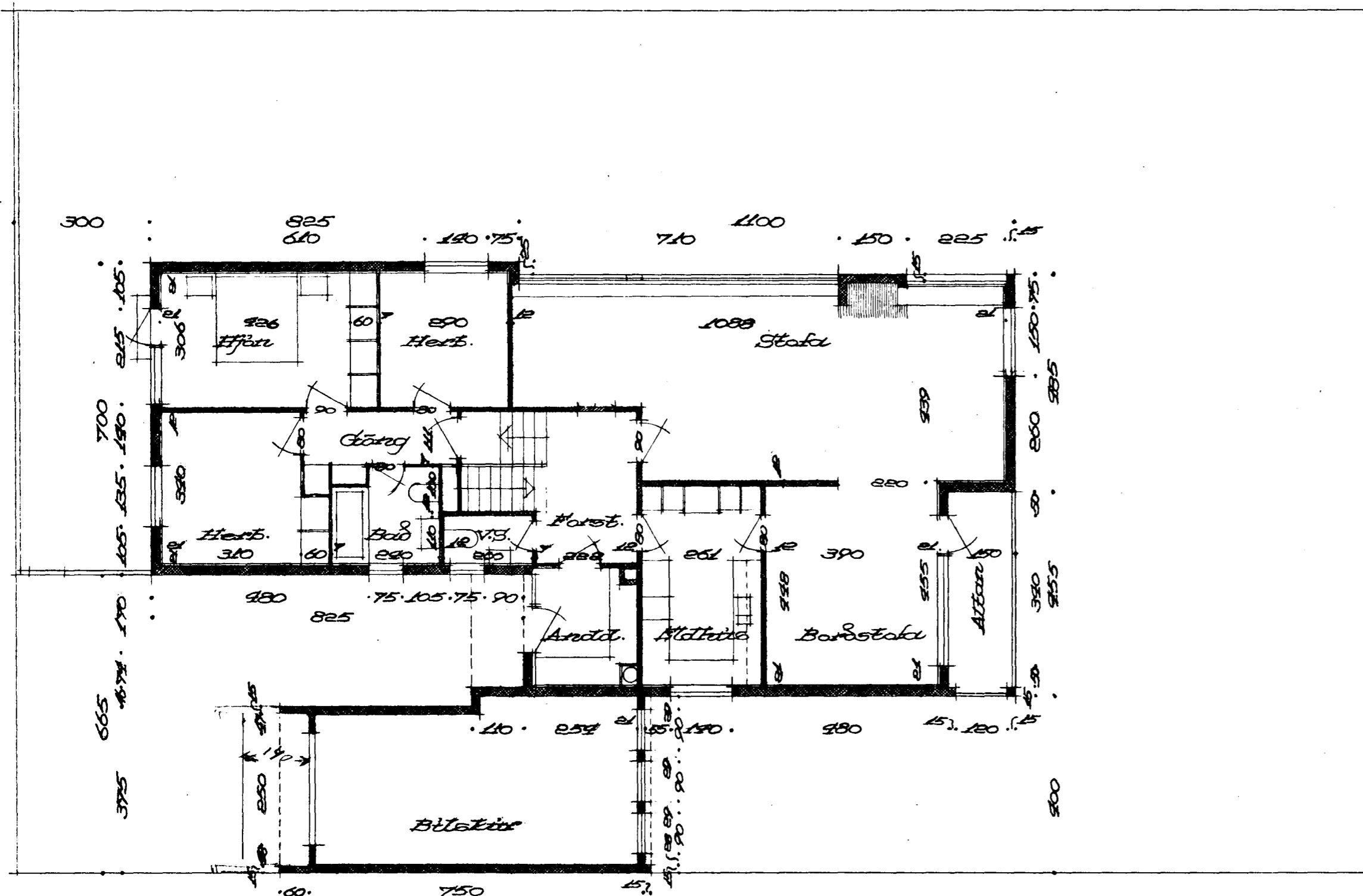


Húsið Nr. 600m. Gæðmáttarlesonar, framkv. stj.
 Hafnarfirði
 Plán 1:100

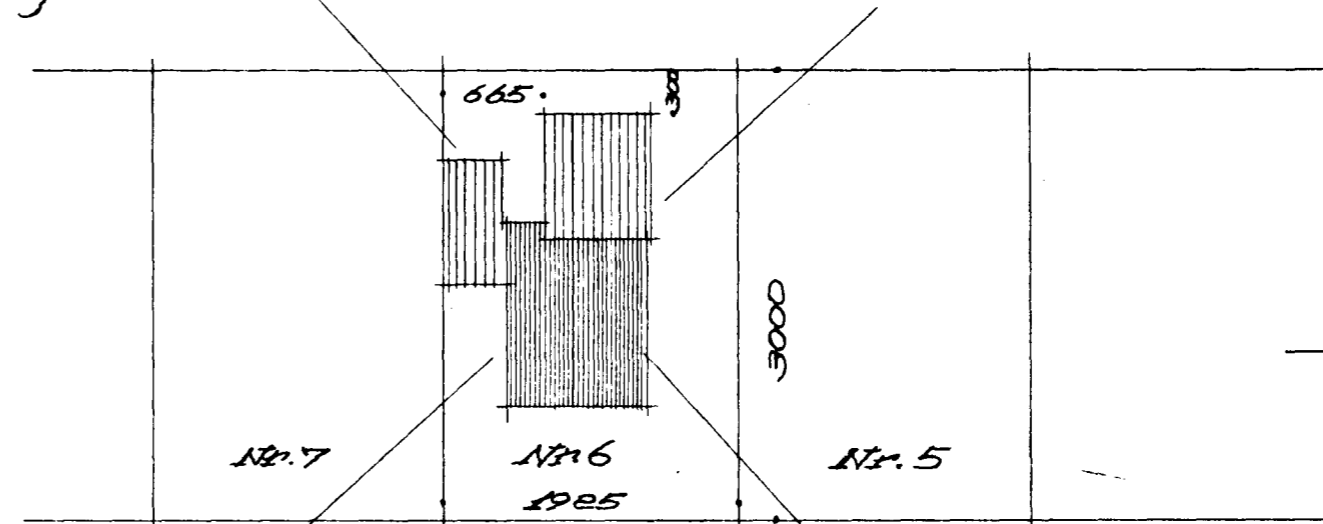


Skurður



Grundmýnd 1. hæðar.

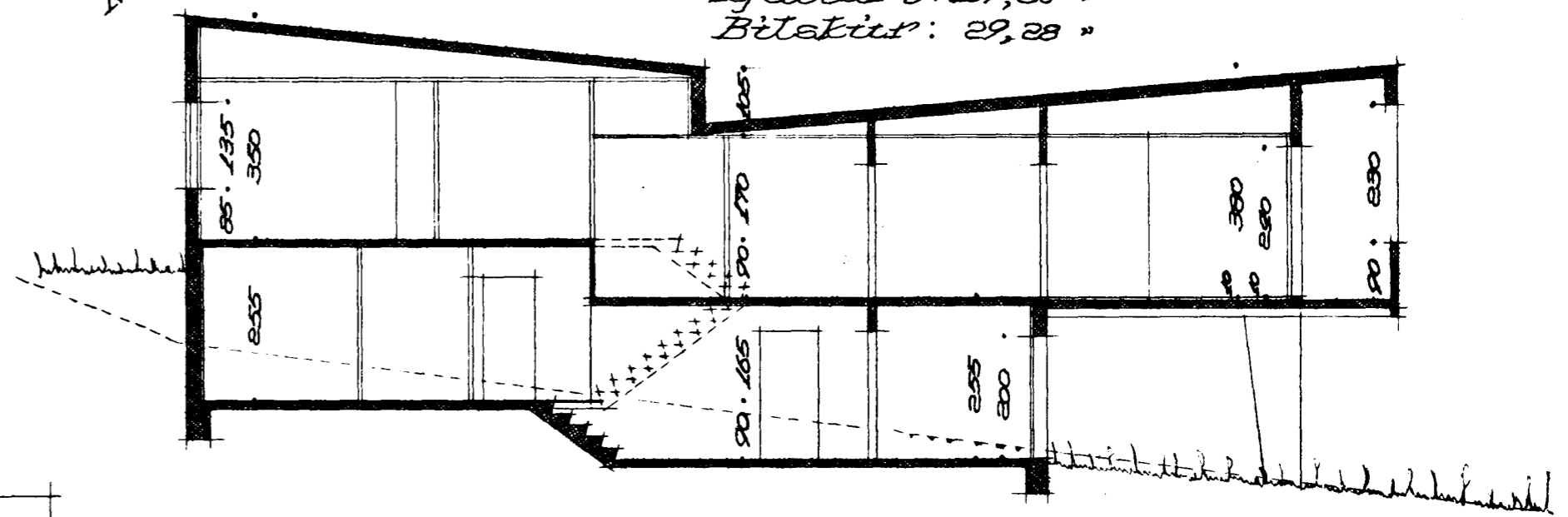
Ónefnd gata (áfrt. Ötustöður)



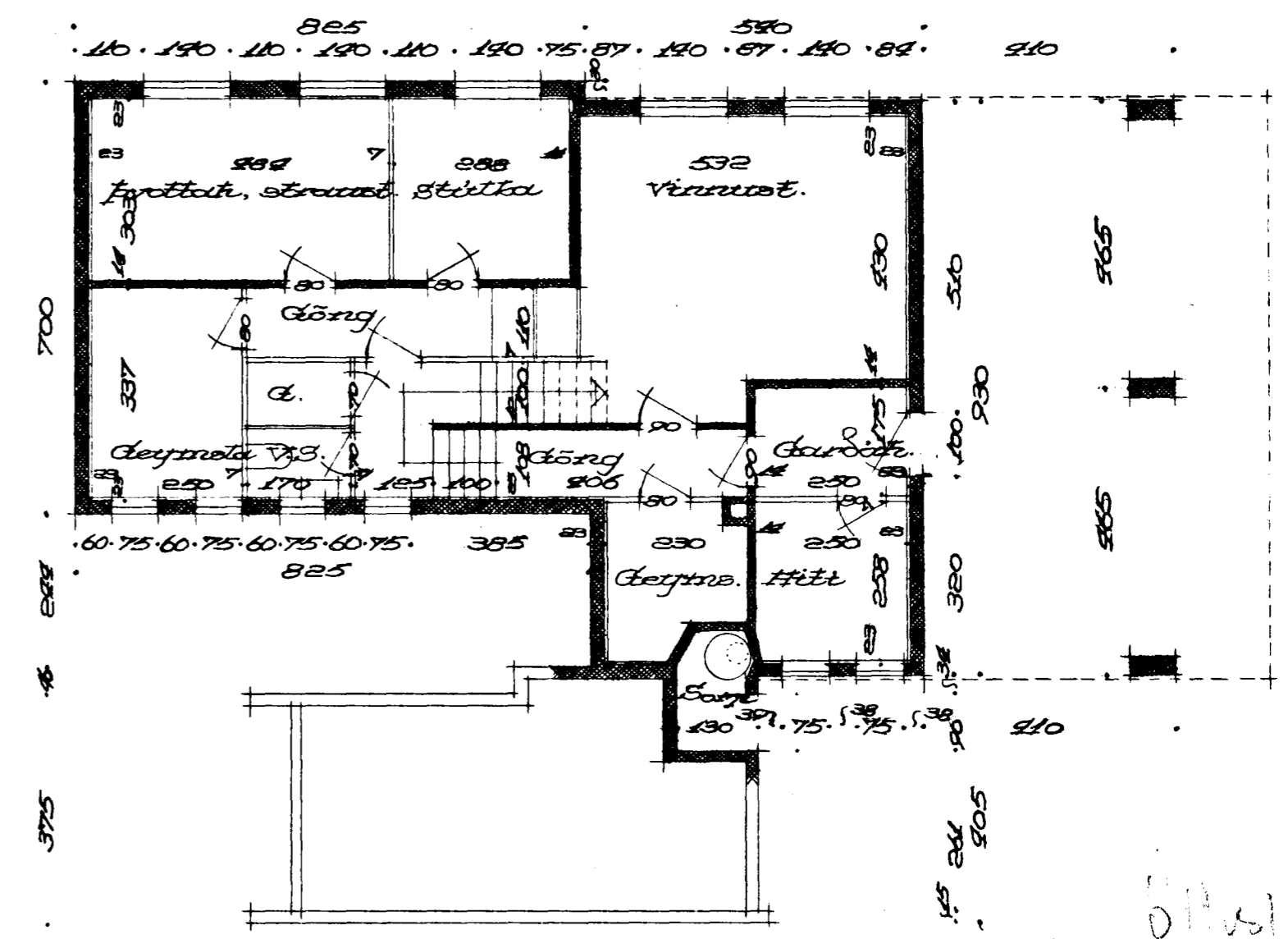
Hilmar Jónbjörnsson
 Einnal Síandía
 Sp. 3/3 '54

Skaklum búg. samþ. 27/975
 FM.

Alstada 1:500
 Lóð : 577,5 m²
 1. hæð : 154,38 m²
 Kjallari : 107,66 m²
 Bílastær : 29,28 m²



Skurður



Kjallari

Reykjavík, 5. 8. 1954
 Sigv. Thordarson,
 arkitekt.
 V.NR. 93-11 T.NR. 201