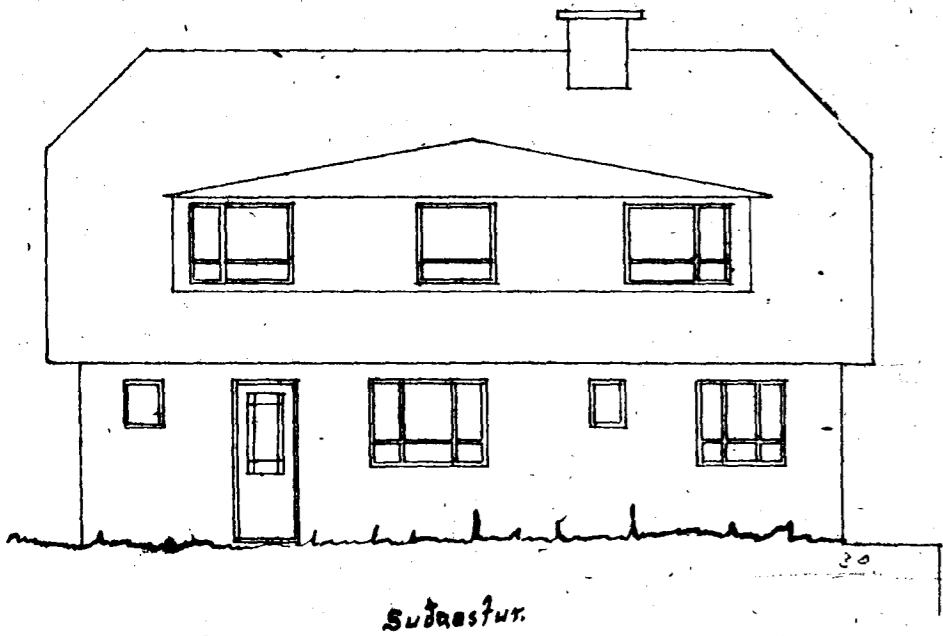
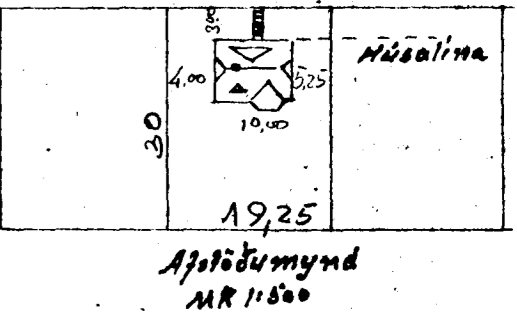
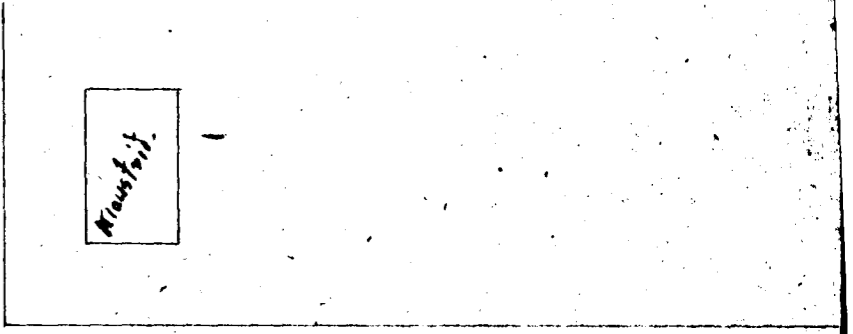


Hús Emils Sigurðssonar við önefnda götu í Hafnarfirði.

Bláa 533 nr. 42

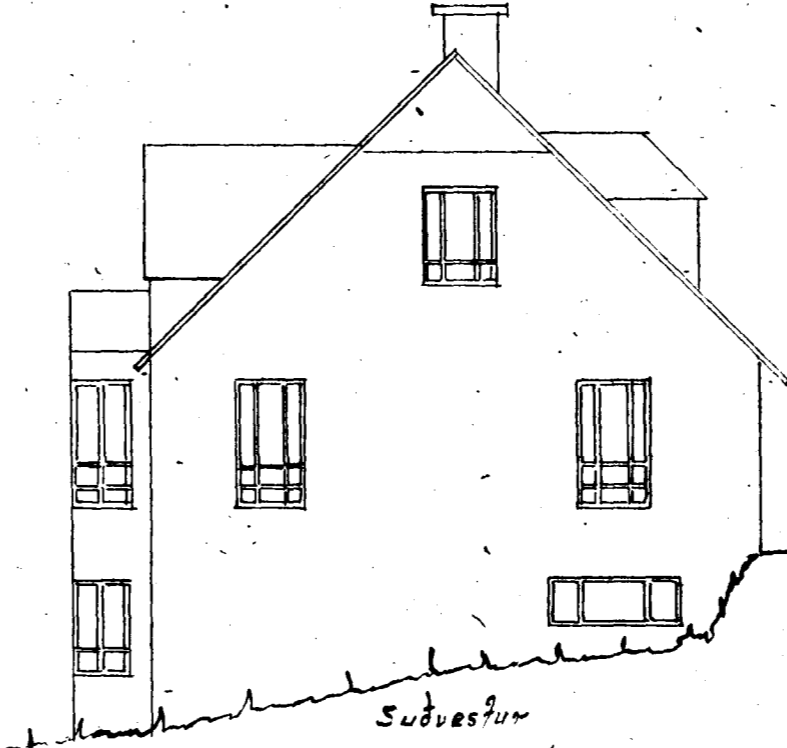
MK 1:100



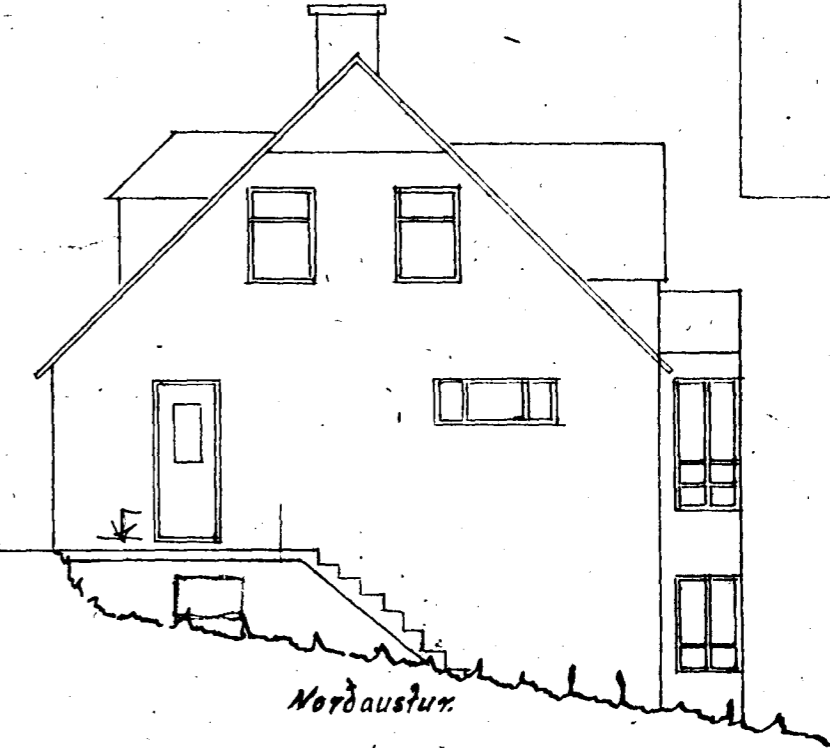
Súðaustur.



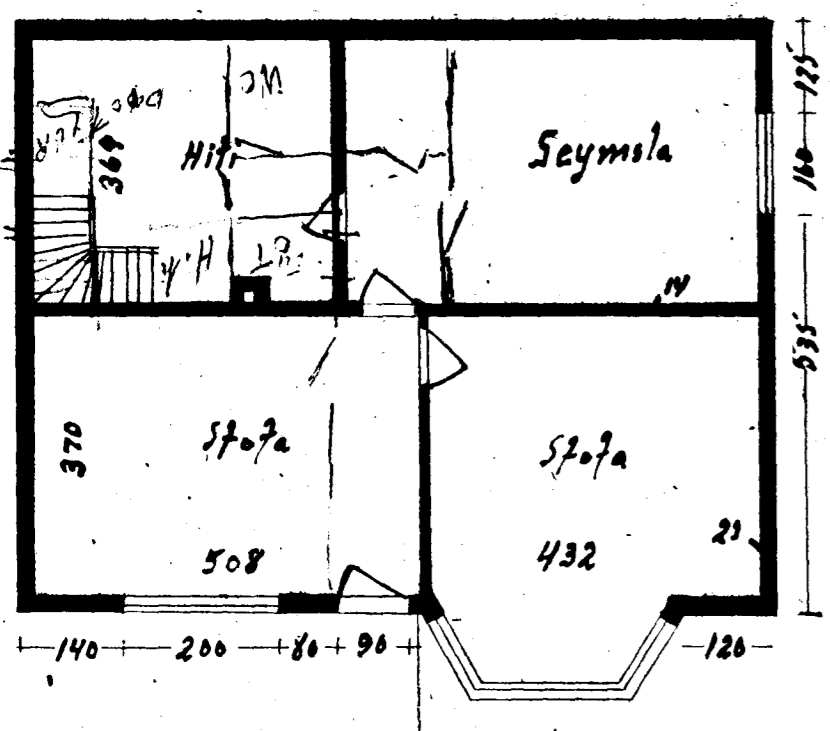
Norðvestur.



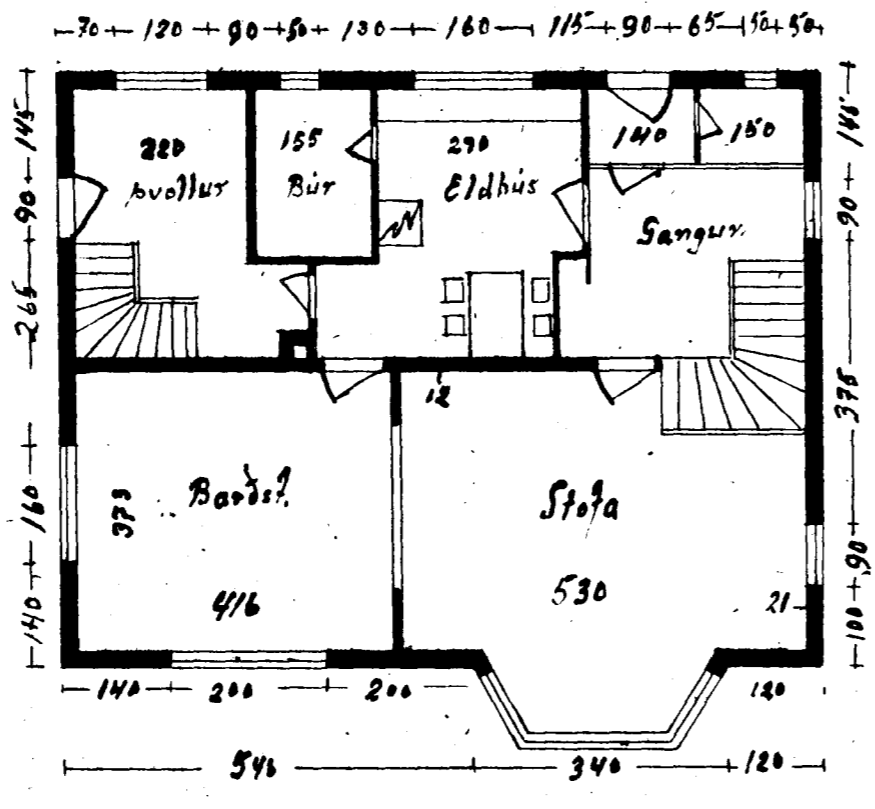
Súðvestur.



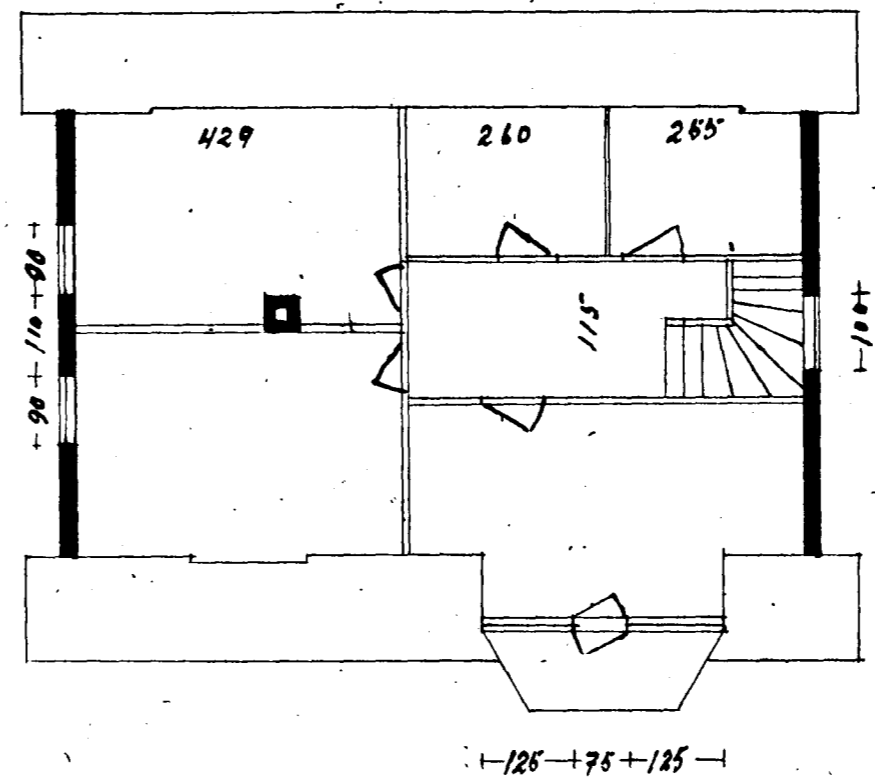
Norðaustur.



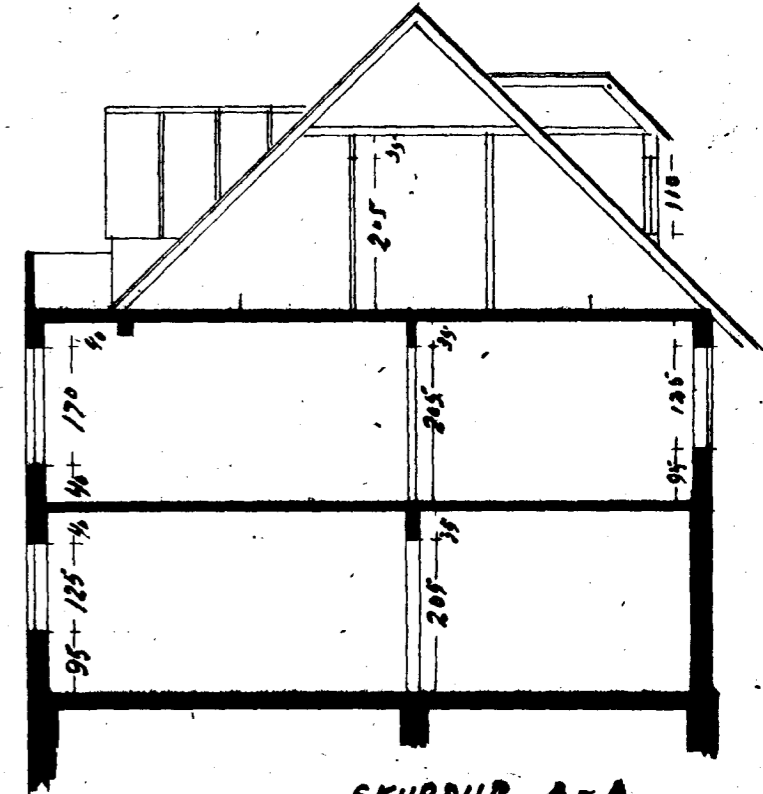
Kjallari.



1000 Hadim.



Ristherð.



SKURÐUR A-A

Hafnarfirði í júní 1964
Bjarni Sigurðsson.