

Hús Emils Sigurðssonar við Ónefndagötu í Hafnarfirði

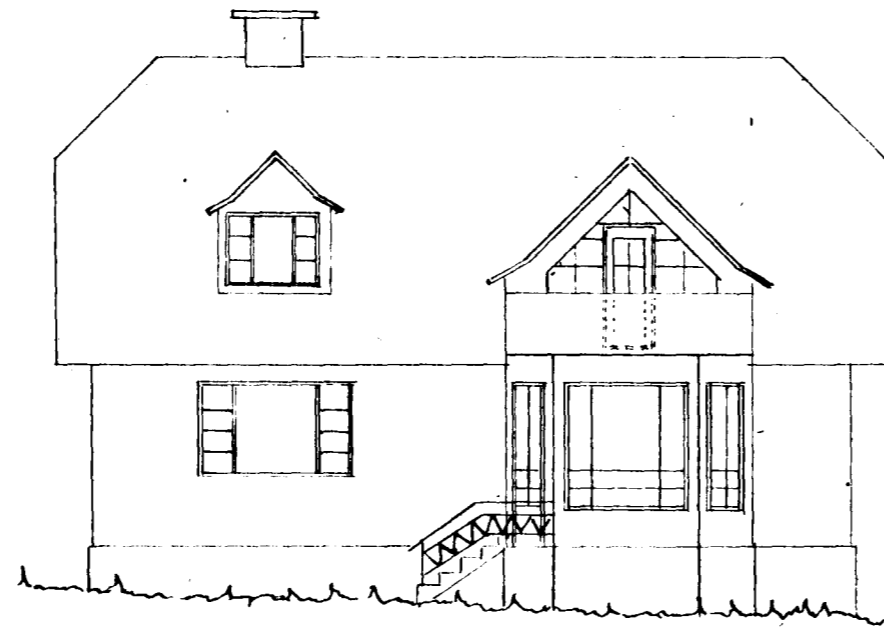
M.K. 1:100

14/11/53

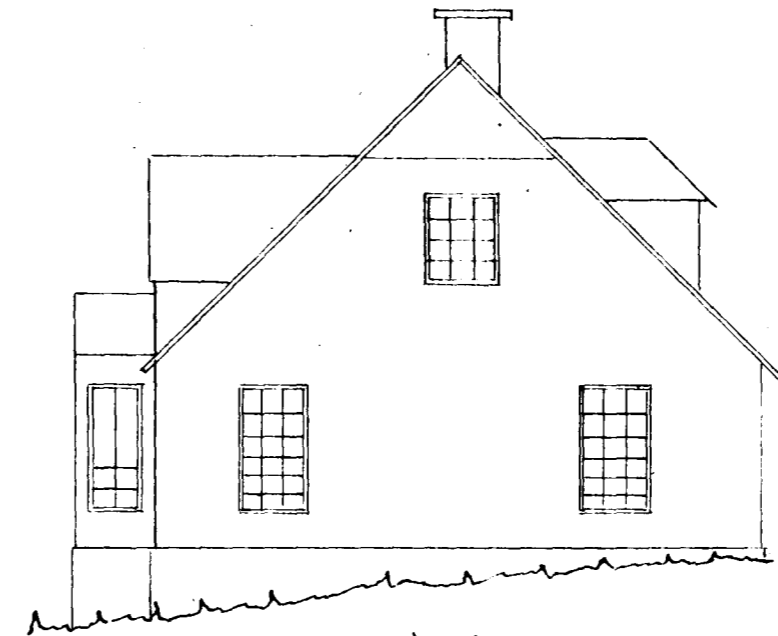
Lesmíðam. Þóroddur Sigurðsson



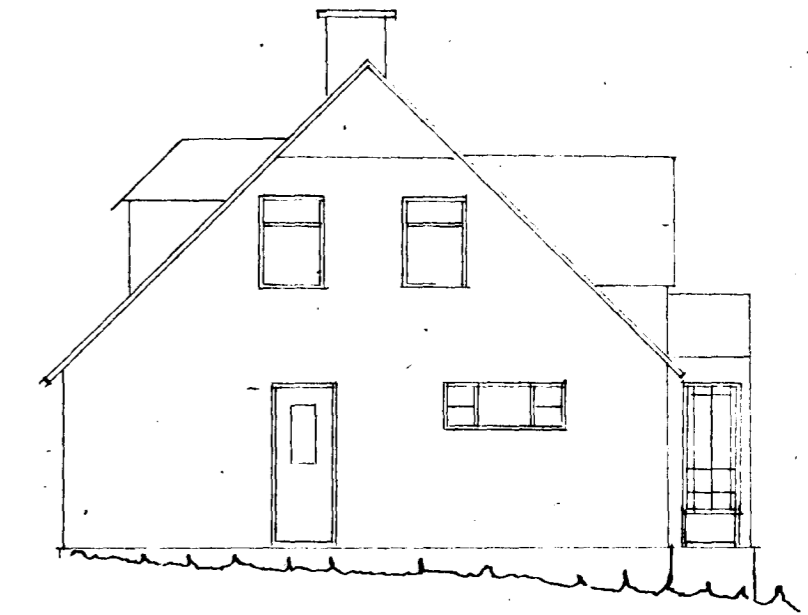
Súðaustur



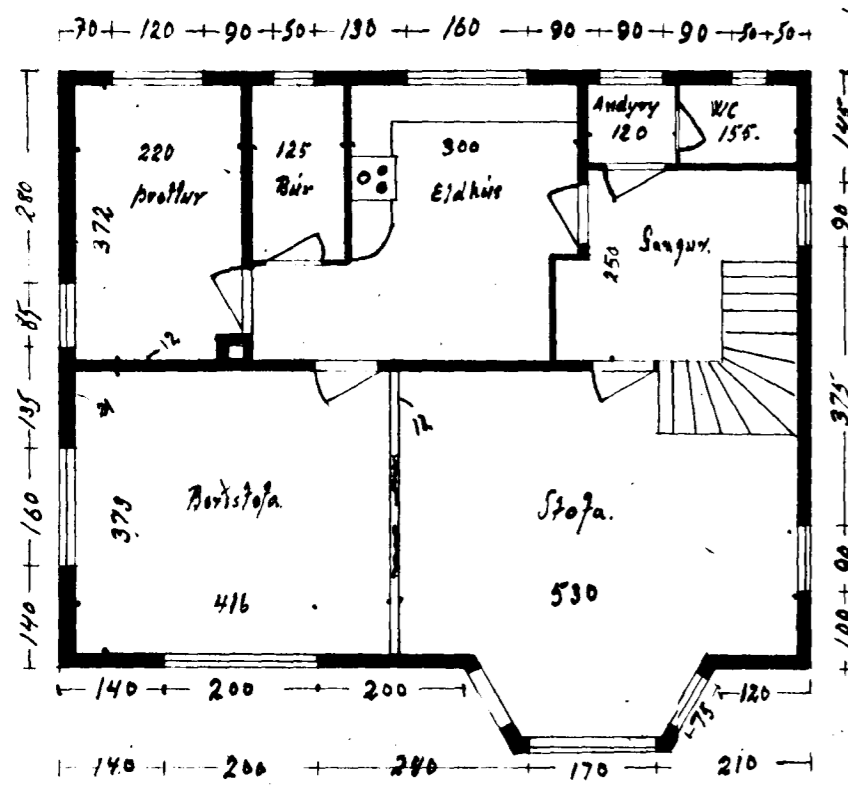
Norðvestur



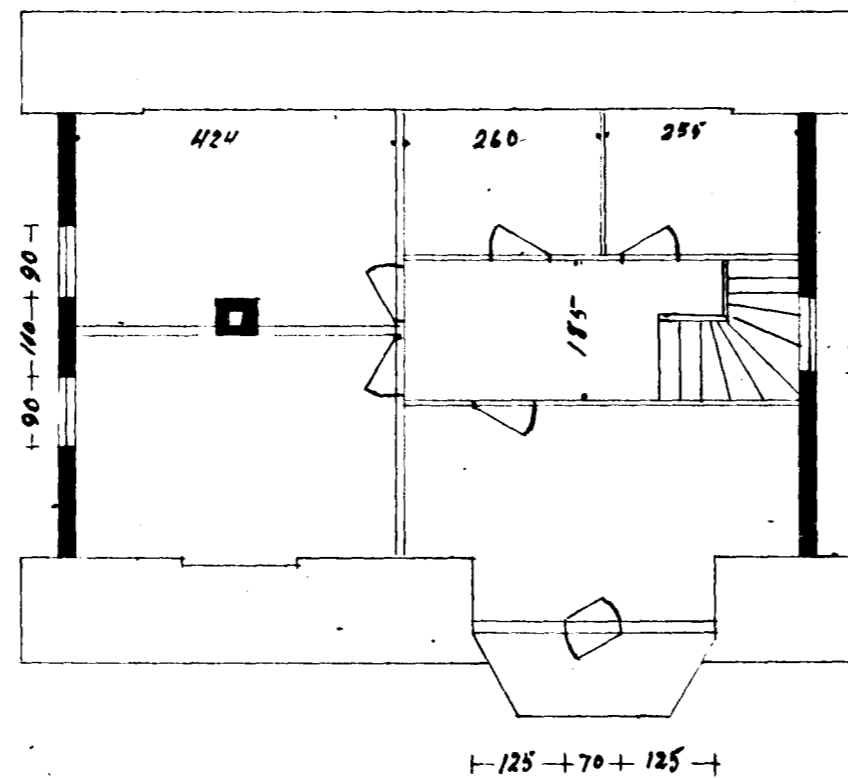
Súðvestur



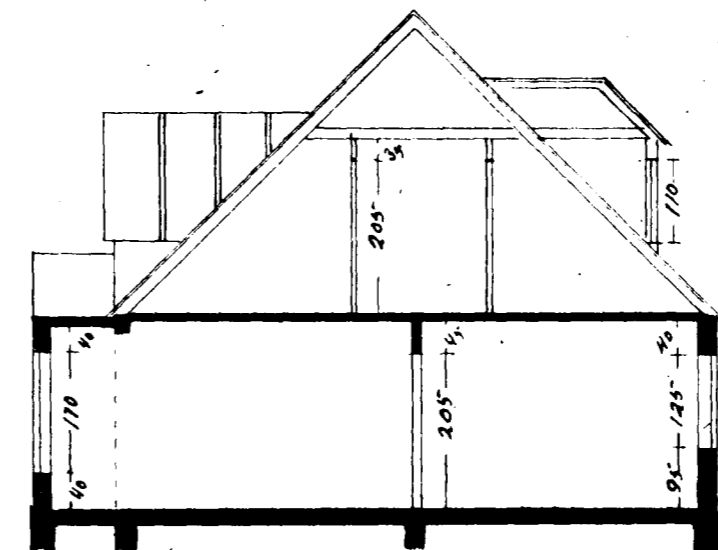
Norðaustur



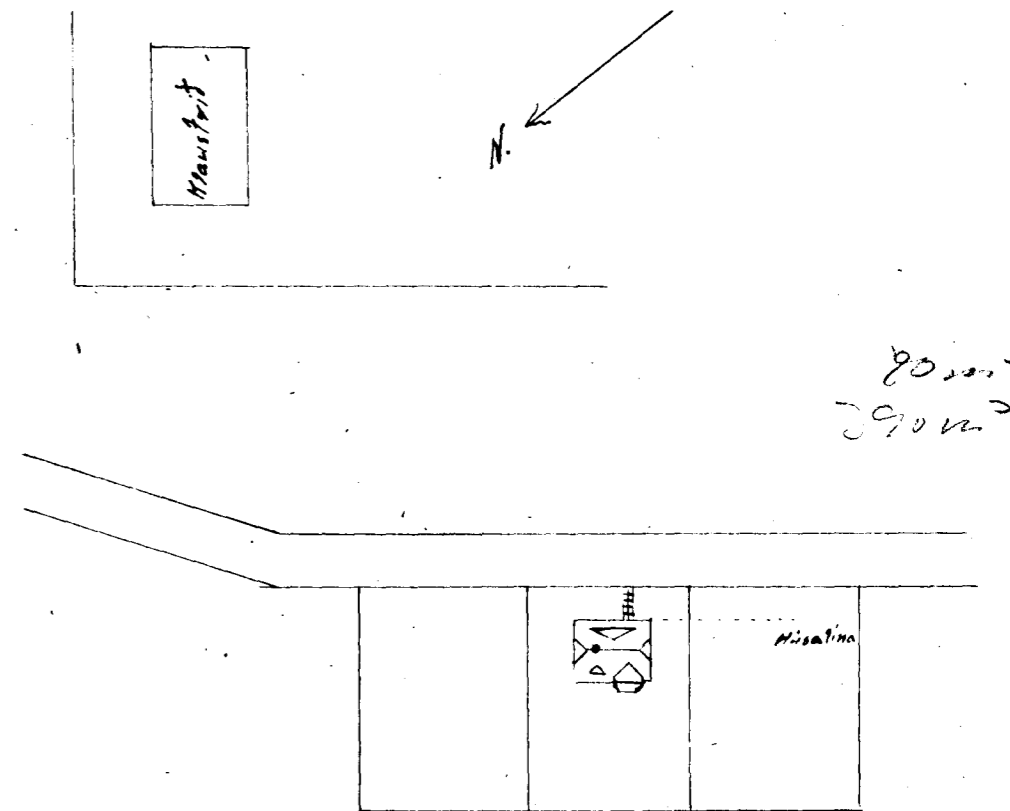
1000
Hæðin.



Rishvæð.



Skurðun A-A.



Afstöðumynd.
MK 1:1000

Hafnarfirði í október 1953.

Þóroddur Sigurðsson.