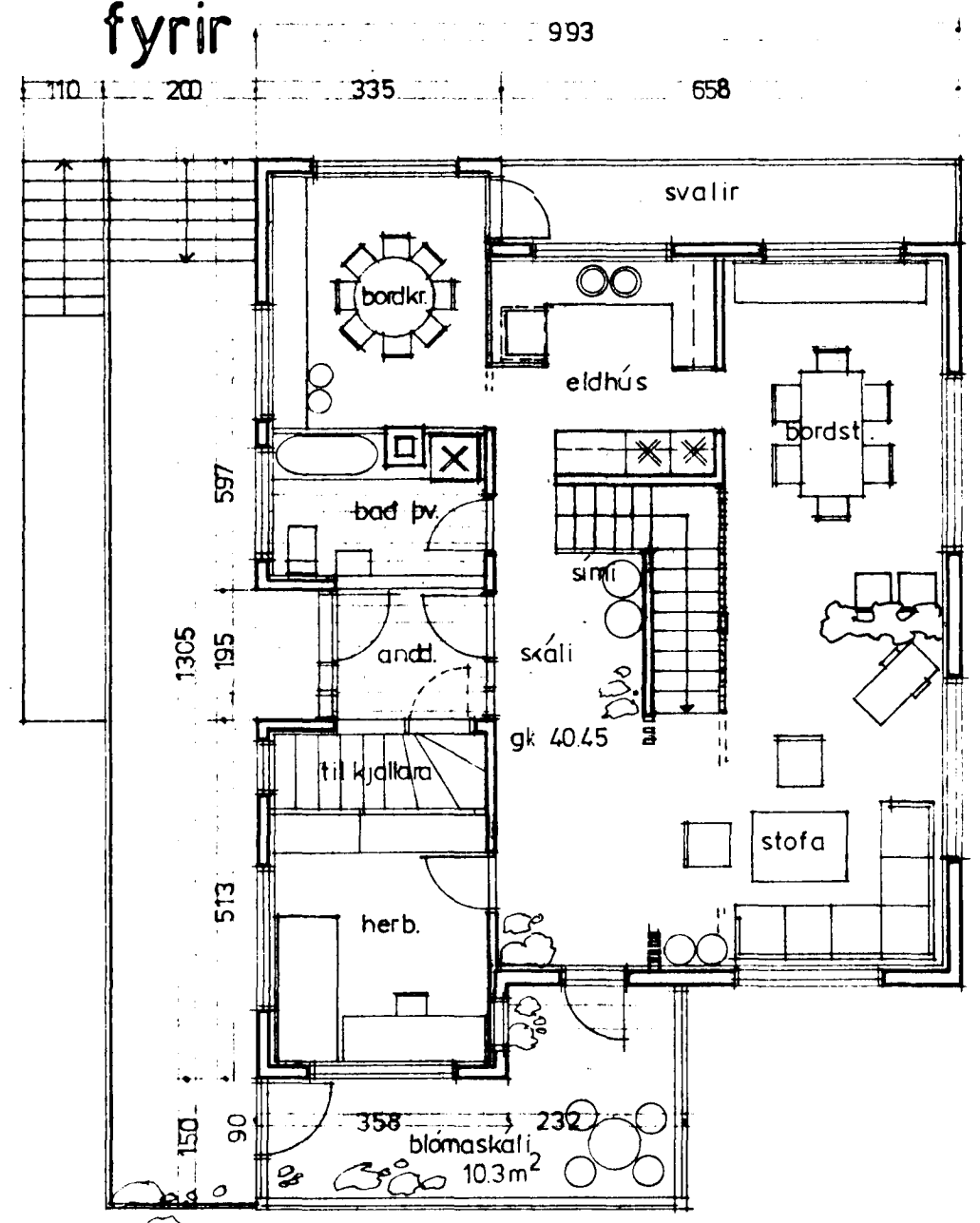
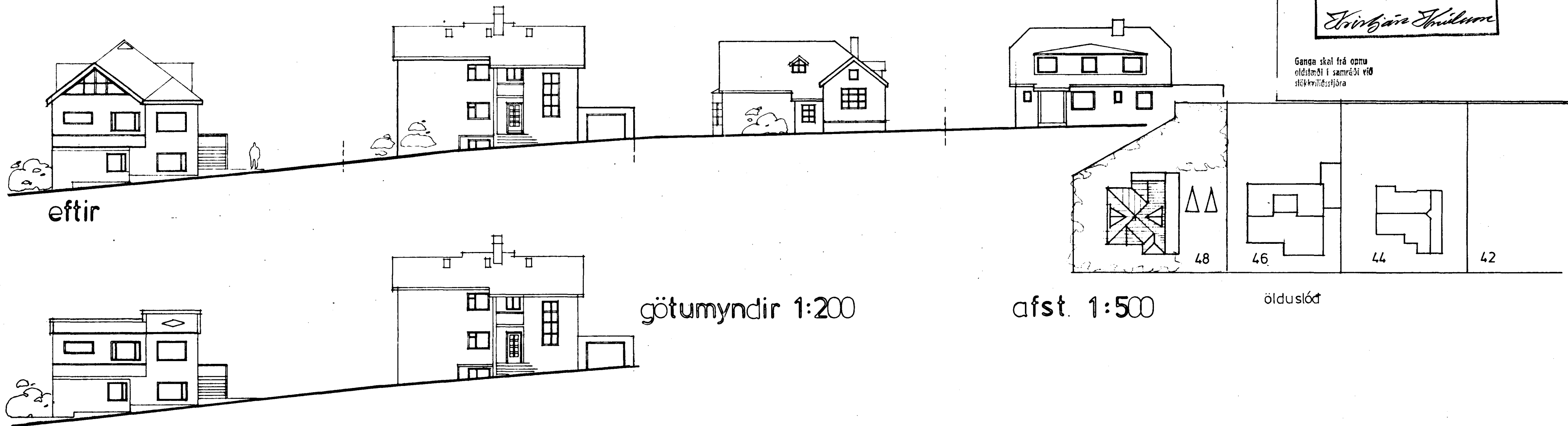
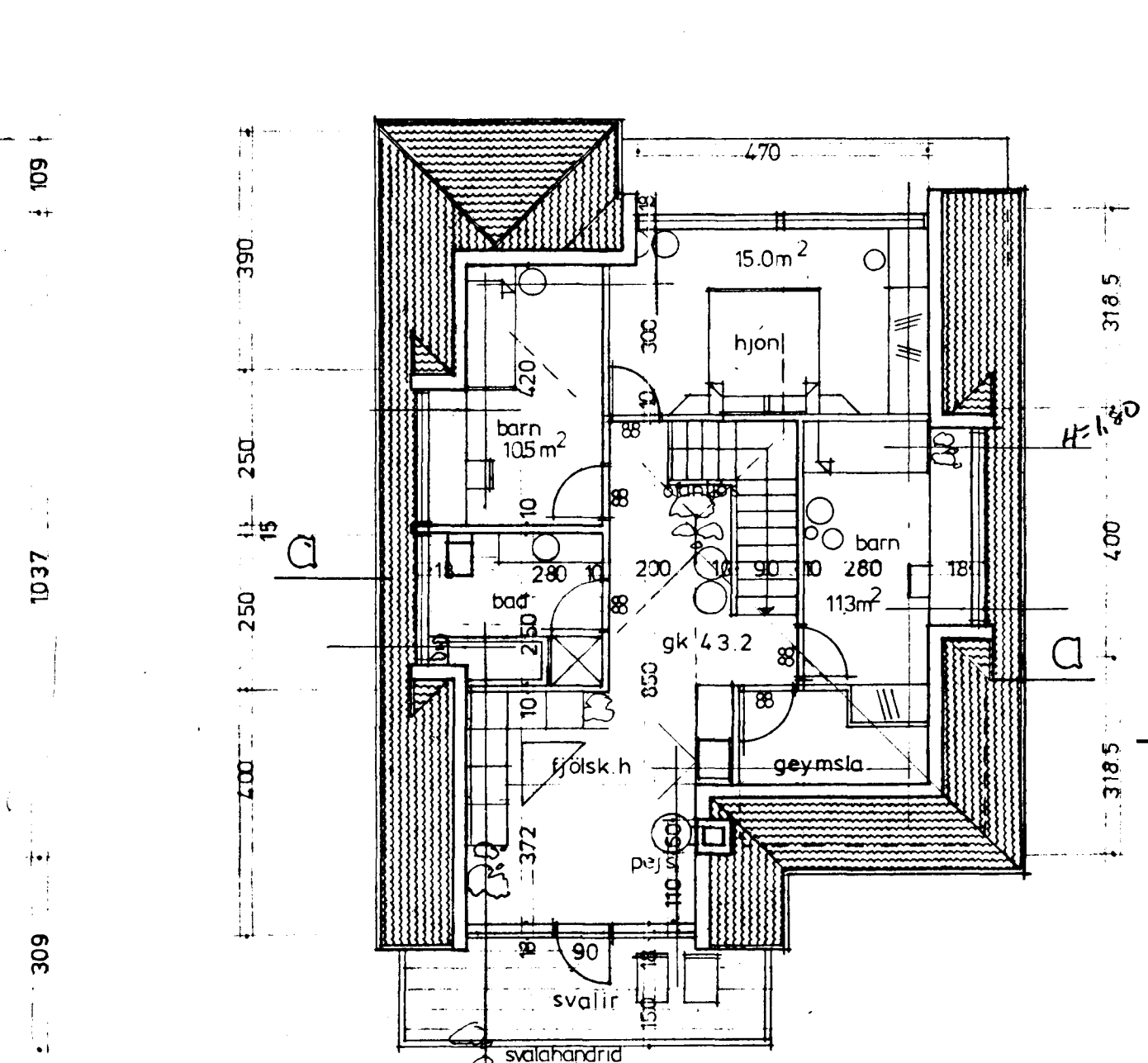


Staðsetning og höfuðátt
 28.8.1985
 BYGGINN FÖLUBODINN
 Í HAFNARFIRRI
Elvirgíu Thórunn

Ganga skal frá önnu
 öldustöð í samráði við
 stjórnvaldstjóra

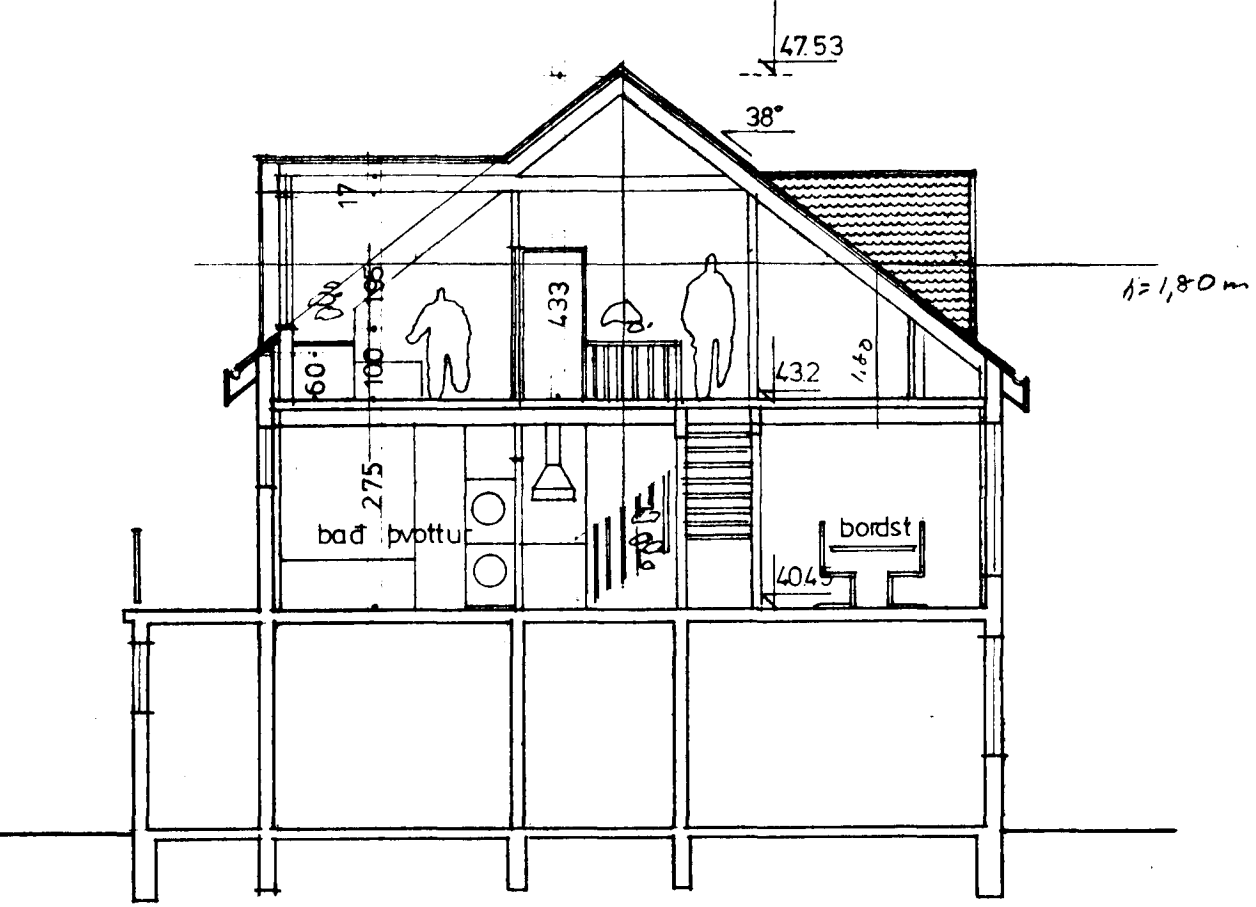


grunnmynd hoed



grunnmynd rishoed

flatarmál
 eldri hoed : 102 m² netto
 rishoed : 79.3 m² n. full nýting samkv. teikn. porth. 100cm



sneiding a-a
 73.1 m²
 237 m²

ölduslód 48	1:100
rishoed grunnm. götum. afstada	1:200
	1:500
	ag '84

01 Guðm. Gunnlaugsson arkitekt fai
 teiknistofa barónsstíg 5 29640
Guðm. Gunnlaugsson