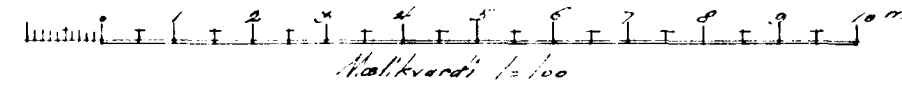
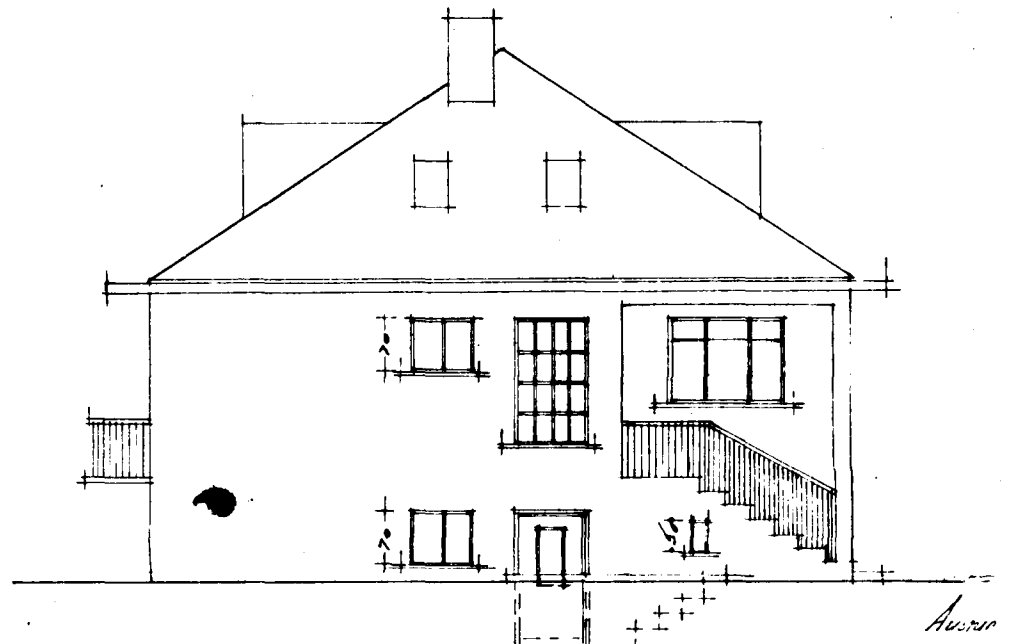


s.p. 9/9'47.

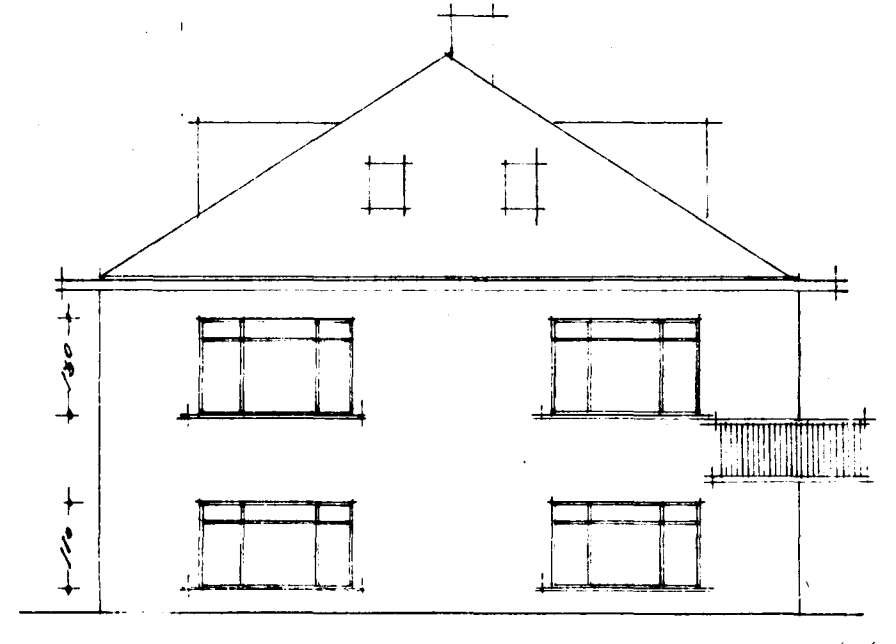
Hús Einaris M. Þorvaldssonar við "Óðusöðvi" Hagnartréi



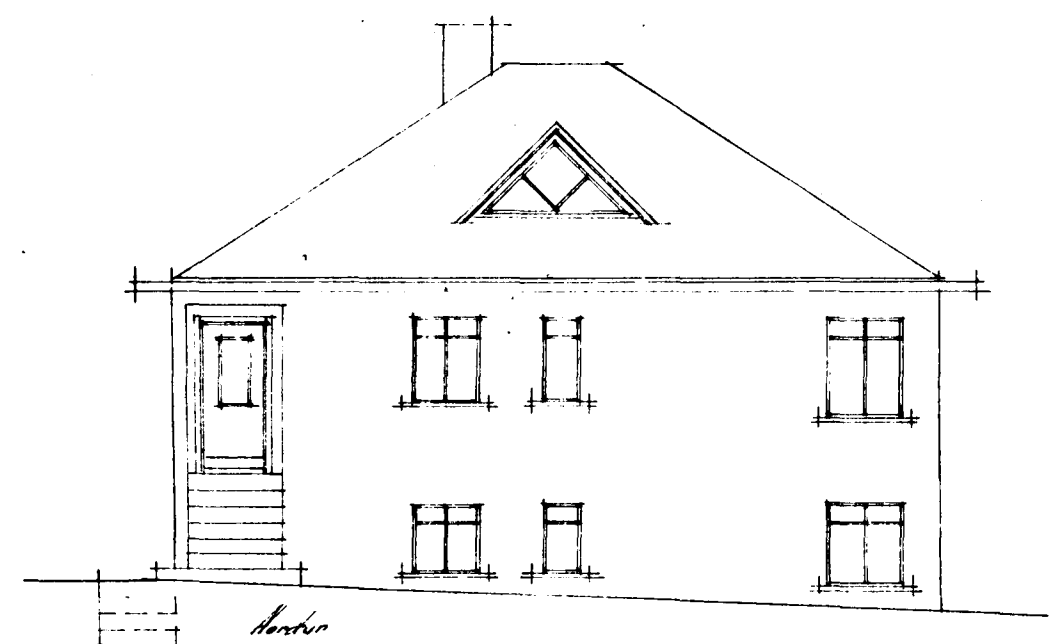
Suður



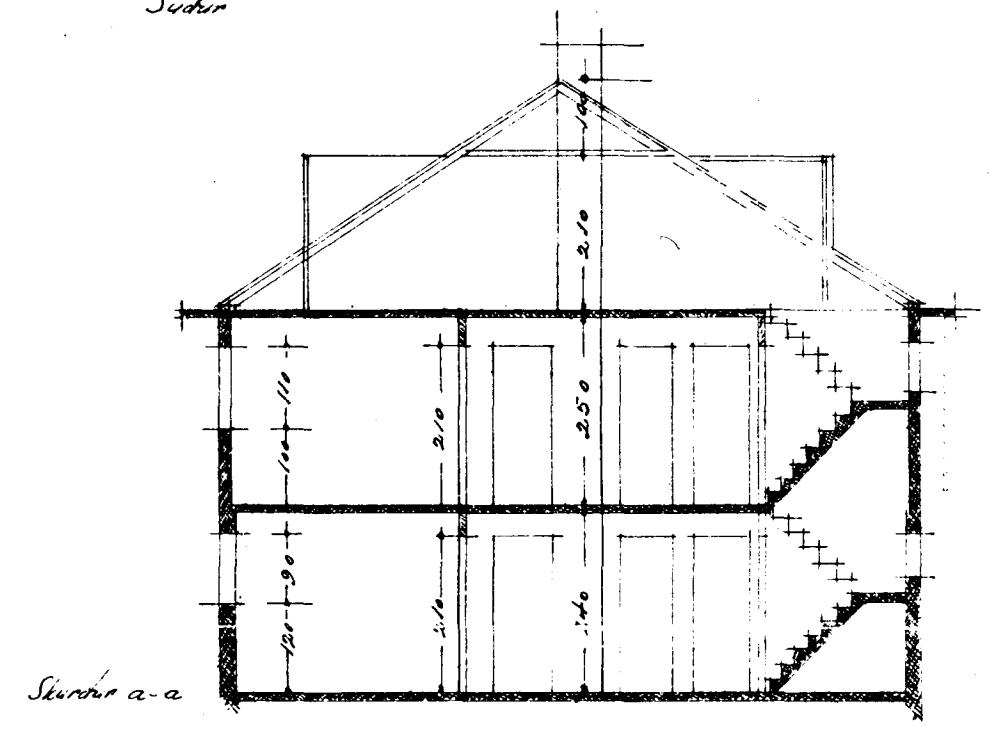
Árður



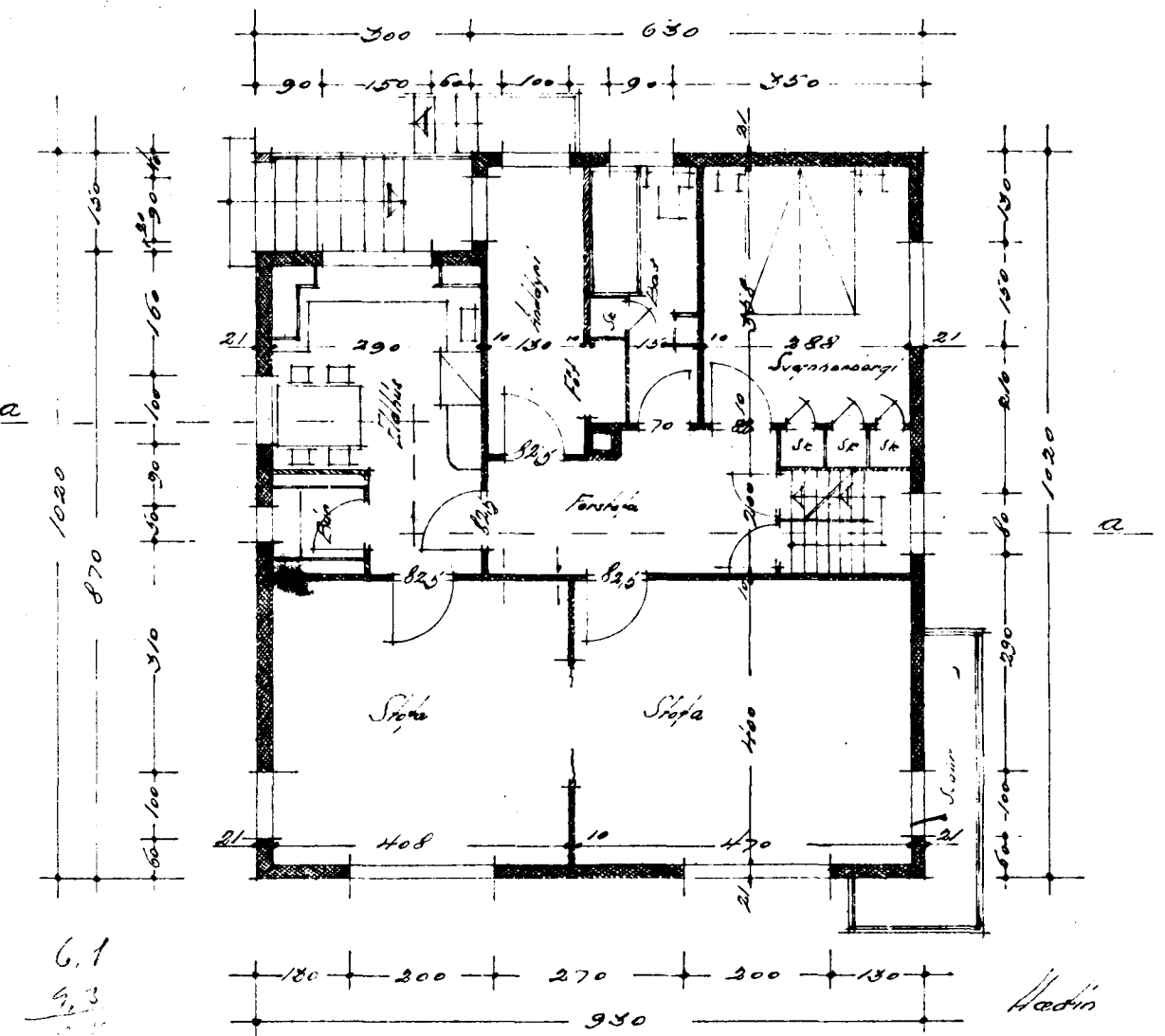
Norður



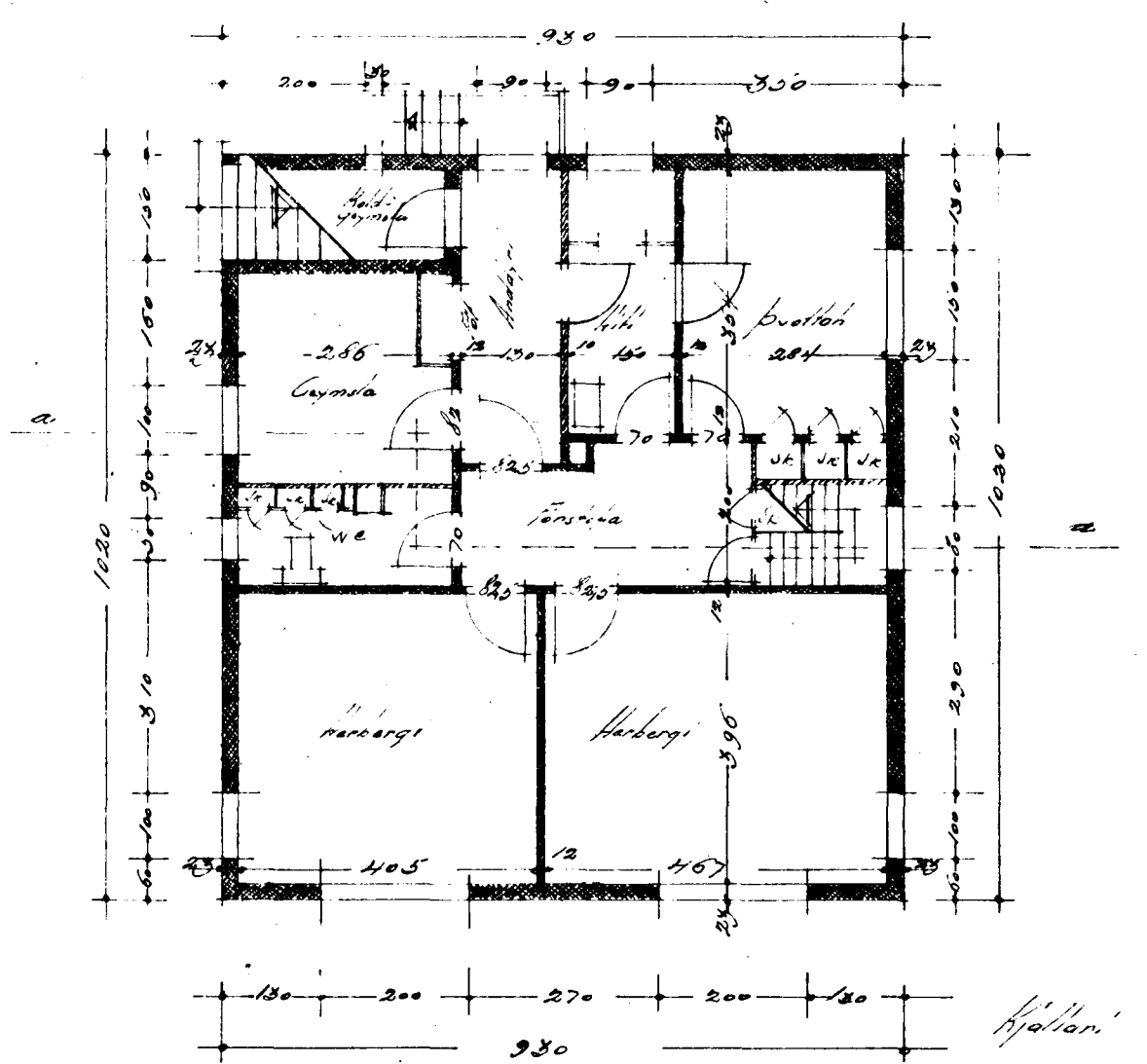
Órður



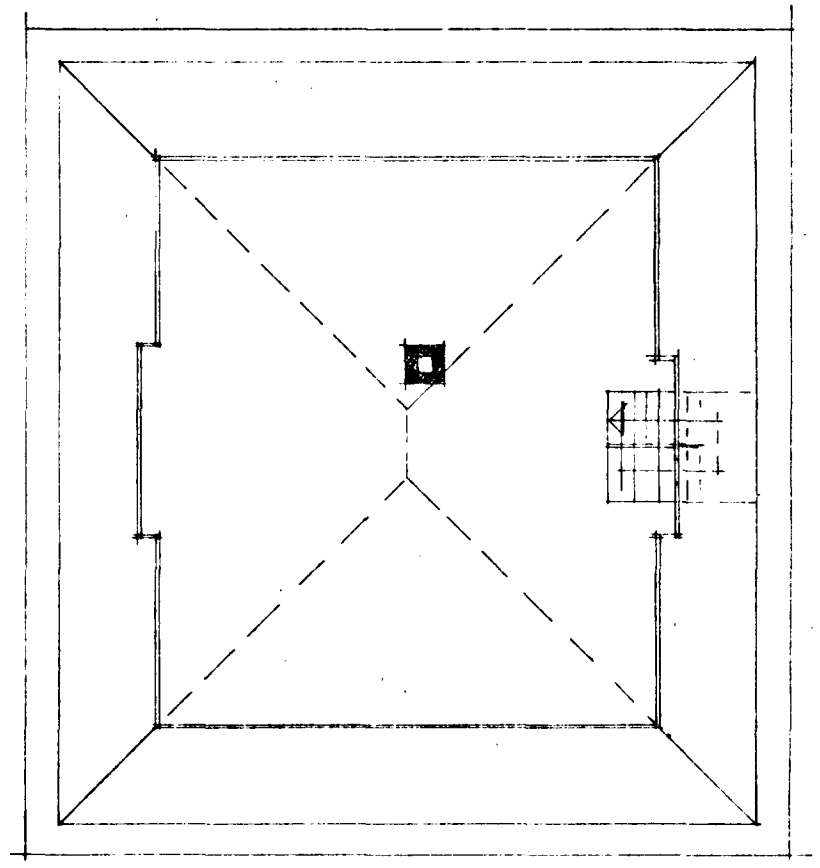
Serió a-a



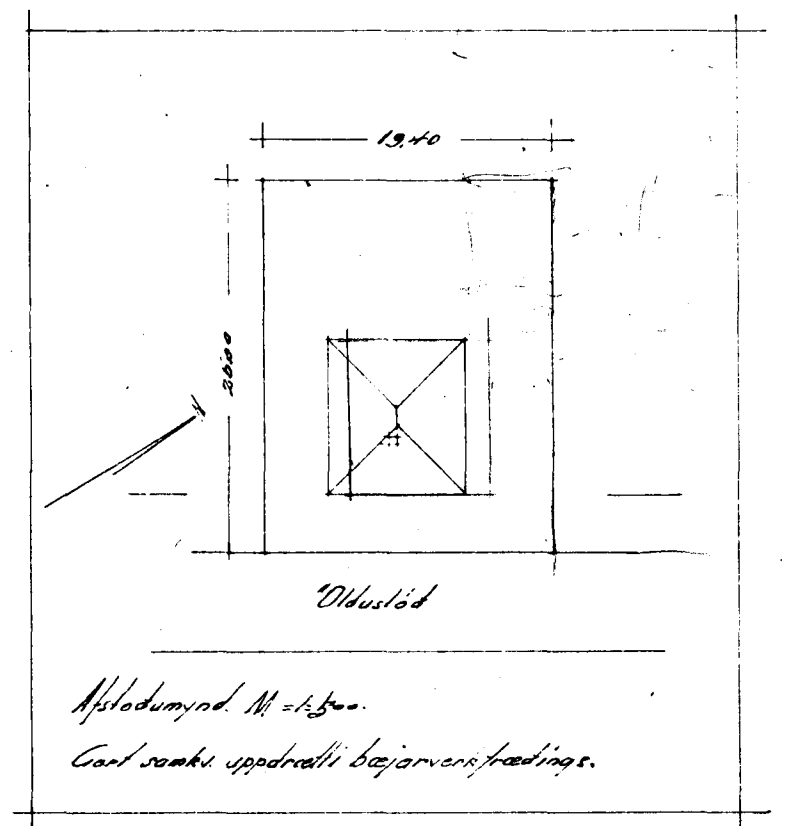
Grund



1. hæð

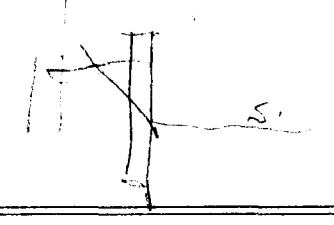


Þak



Óðusöðvi

Höfundurinn M. E. Þorvaldsson.
Gætt samkvæmt uppdrætti byggingarfræðinga.



Höfundurinn í ágúst 1947
E. Þorvaldsson