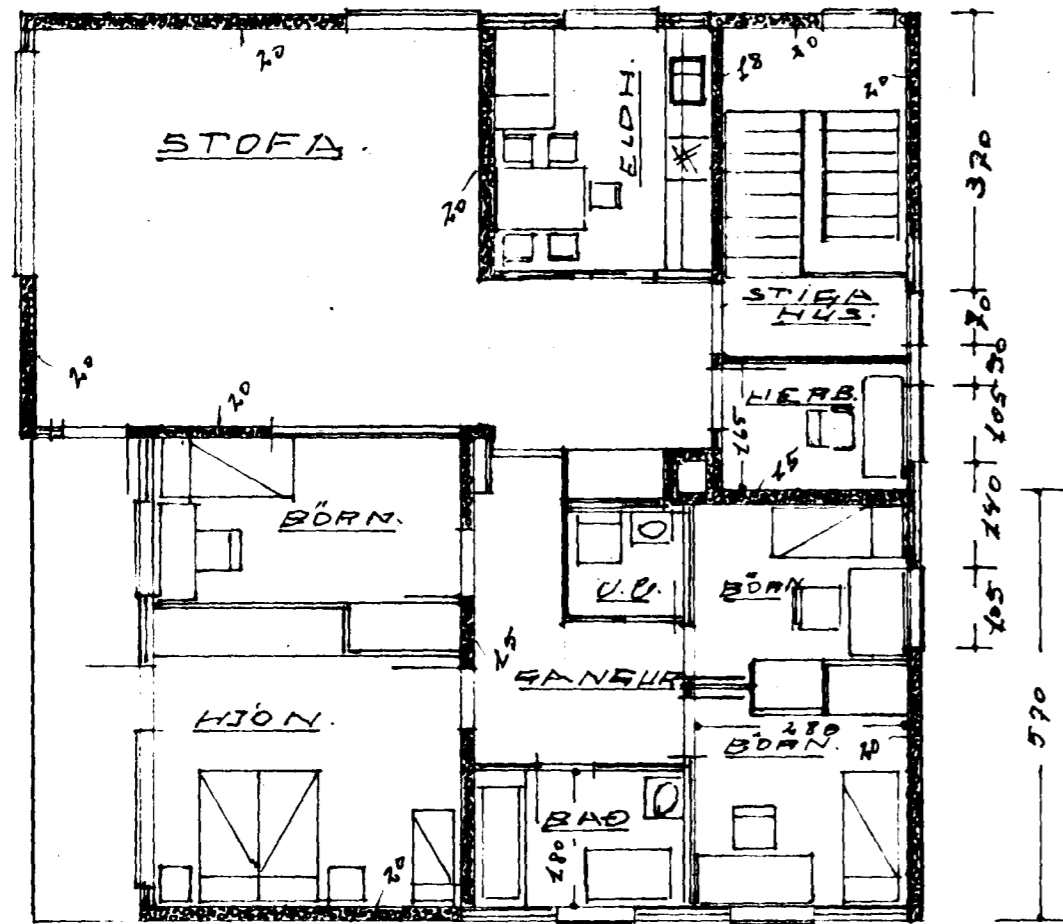
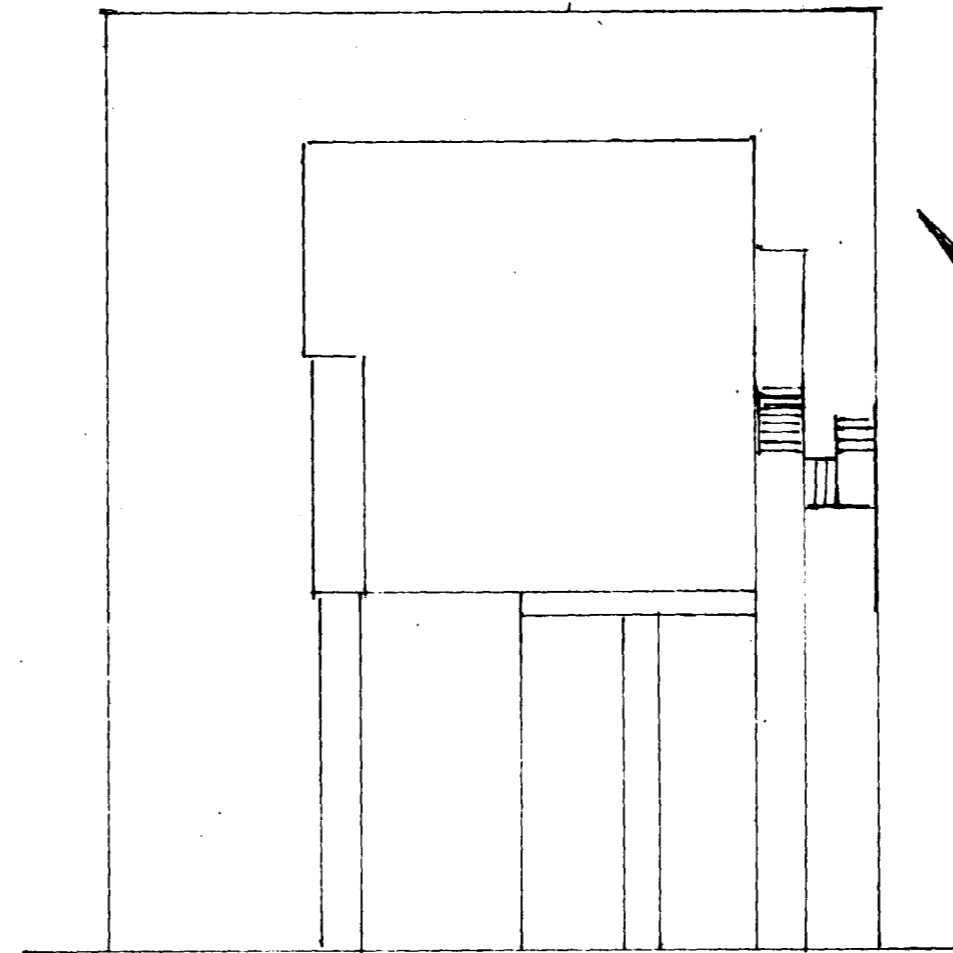


"OLDUTUN NR. 14. HAFNARFJÖÐI.

M = 1:100.



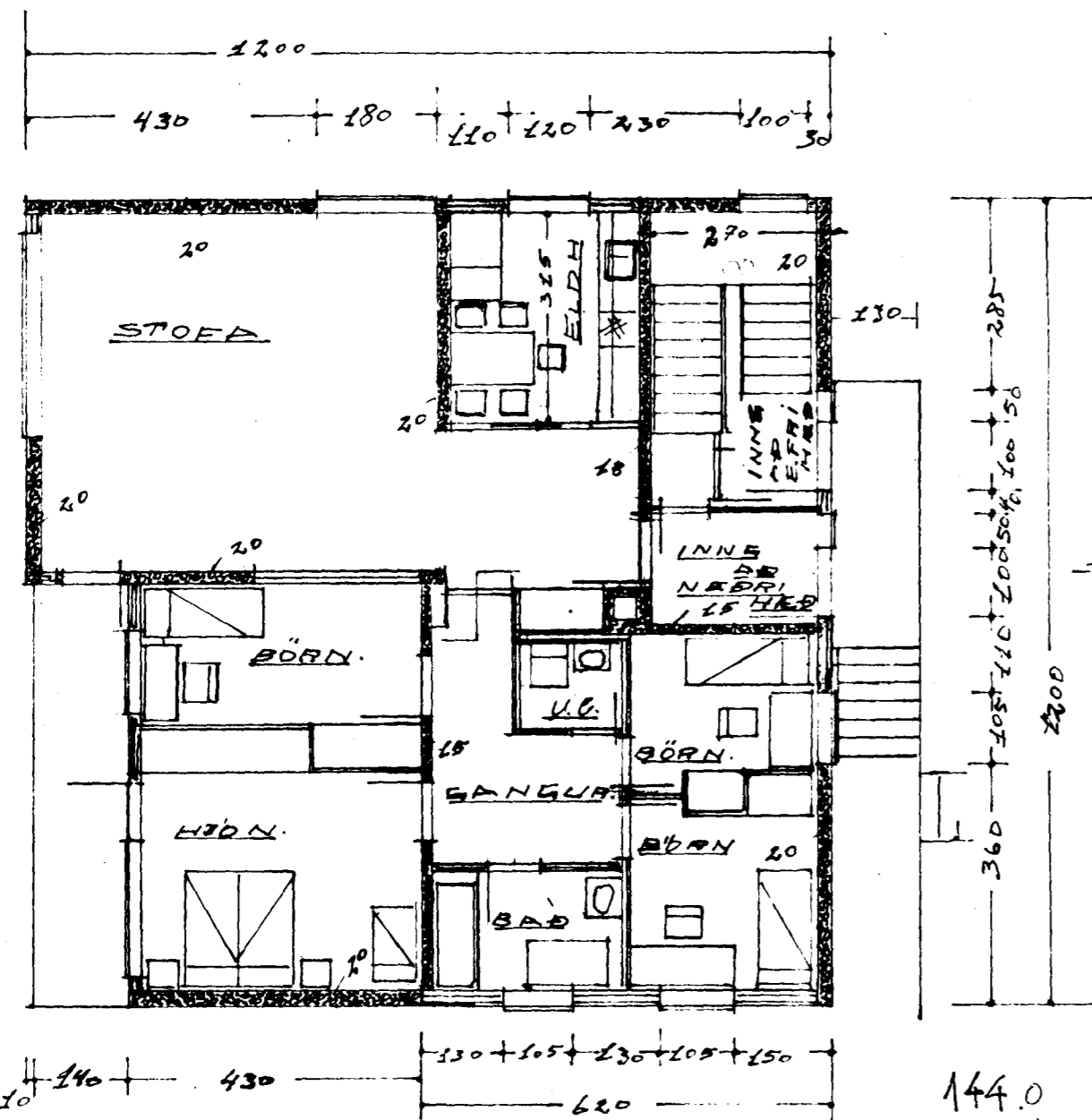
II HÆÐ.



"OLDUTUN" AFASTÖÐUMYND.  
M = 1:200.

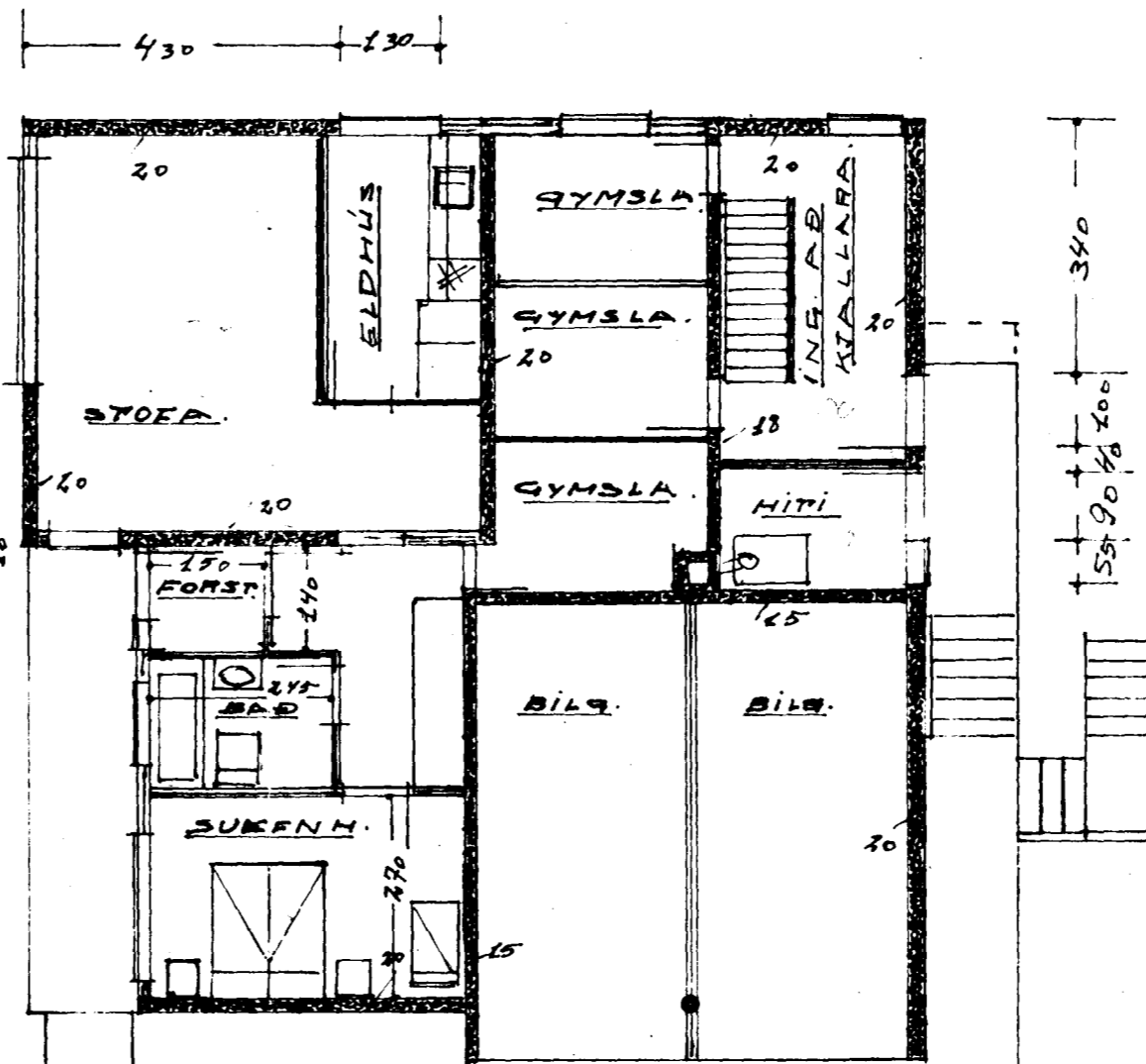
Samþykkt á fundi bygginga-  
nefndar þ. 10. 7. 1963  
BYGGINGAUFMÖNN  
HAFNARFJÖÐI  
Jón Bergson

515m<sup>2</sup>



I HÆÐ.

144.0  
9.85  
134.35



KJALLARI.

33.65  
20.93  
65.58

13473 FERMETRAR GRUNNUR.  
1189 RUMMETRAR.

Lafrun, liti mai 1963.  
Jóni Jónsson.