

SKYRINGAR

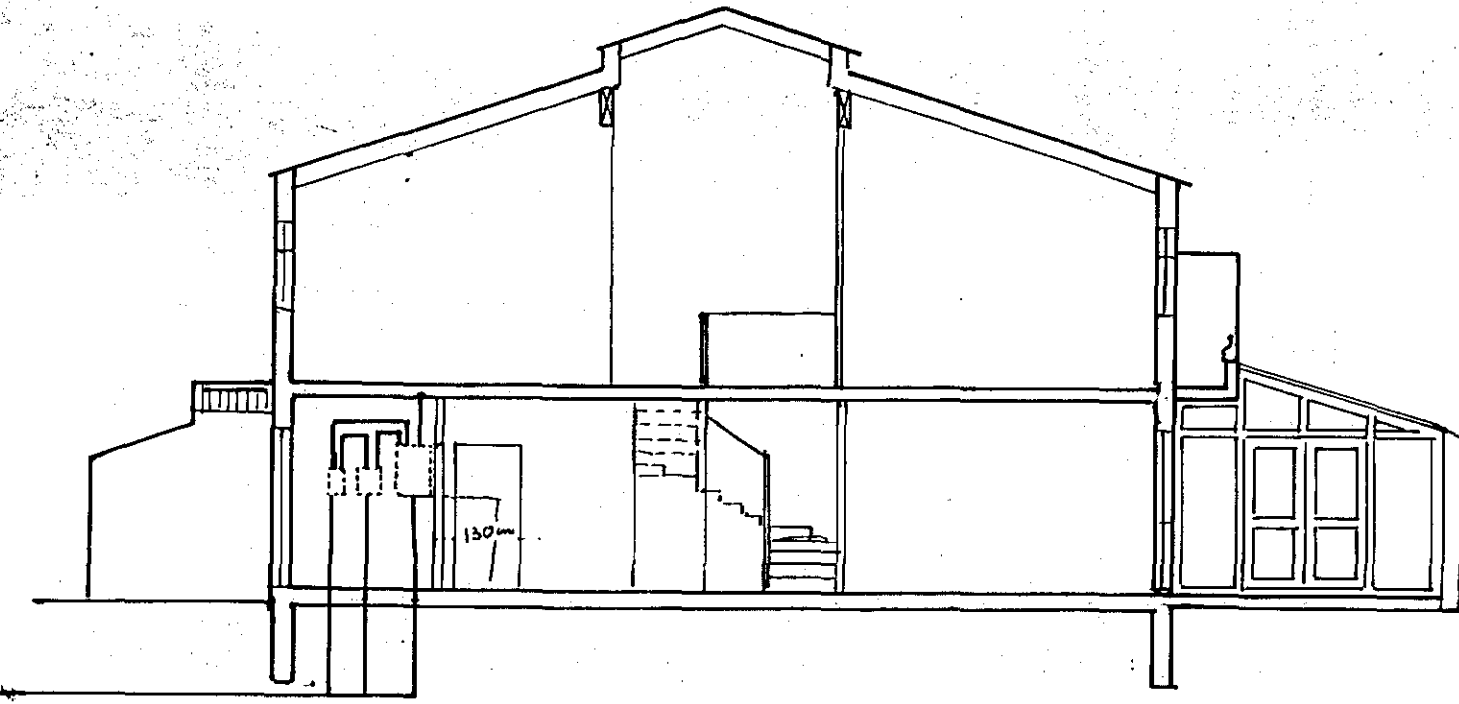
HÆÐ VEBGLIÖSA ÚTI

- TENGLA
- VEBGLIÖSA
- ROFA
- TENGLA
- TENGLA VIÐ ROFA
- TENGLA FÆRIR L. F. DS.
- TENGLA Í ELDH, BÚAÐ, PVOTTAH
- TENGLA OG ROFA Í BILGEYMSLU

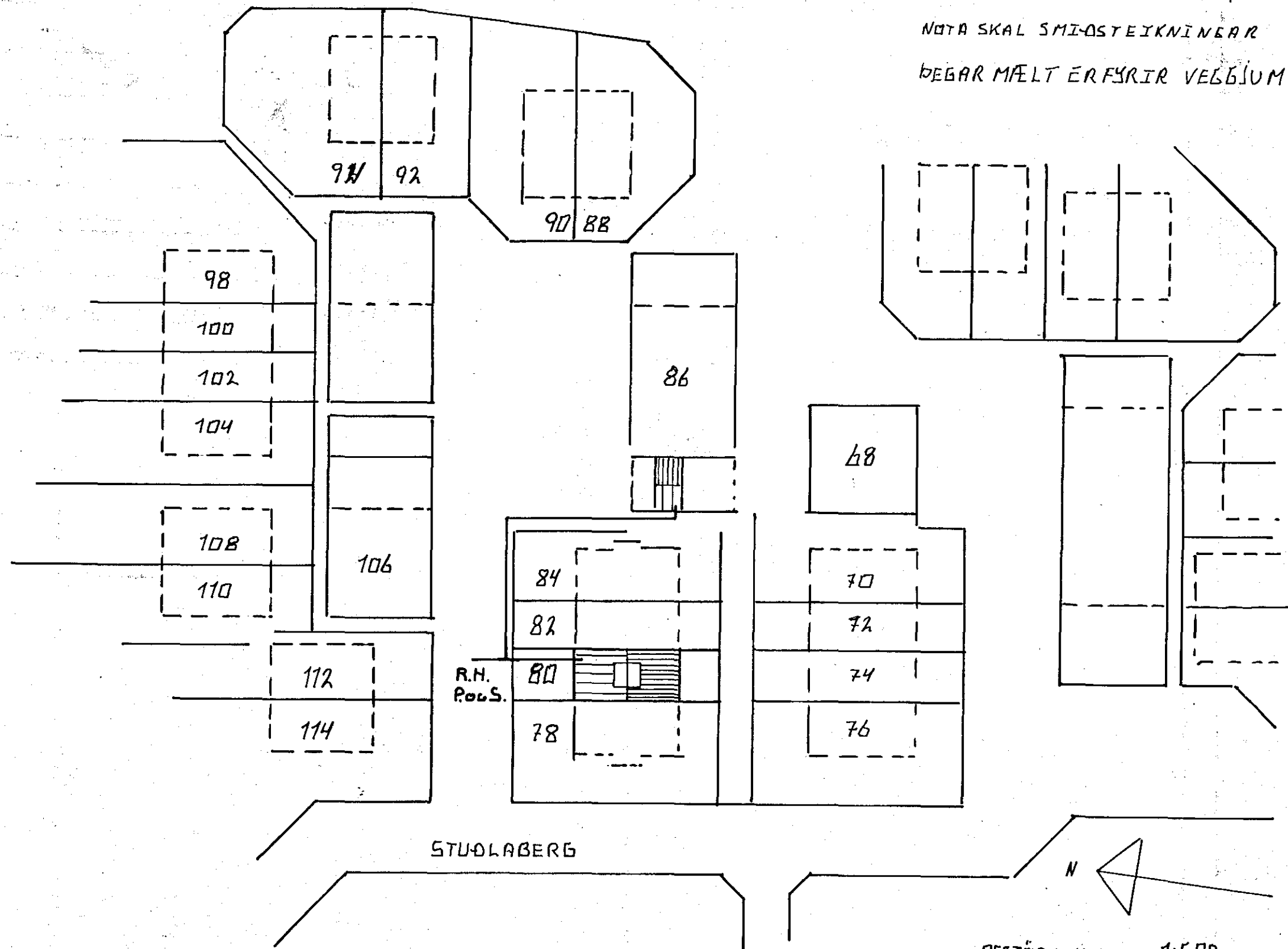
- 180 cm
- 160 cm
- 160 cm
- 105 cm
- 15 cm
- 105 cm
- 15 cm
- 105 cm
- 110 cm

MÁLSTRAUMUR TENGLA OG ROFA
SE MINNY 10 A

PIPUR 16 mm OG VIR 3x1.5q
NOTA SKAL SMÍÐSTEIKNINEAR
BEGAR MÆLT ERFYRIR VEBGLIÖSUM



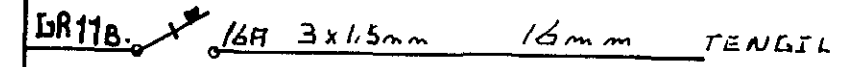
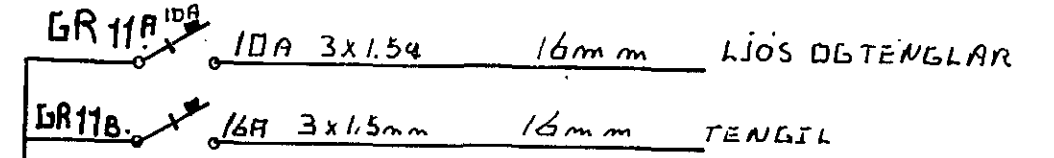
RÖR 70 cm UNDIR YFIRBORÐI 1:100



STUÐLABERG

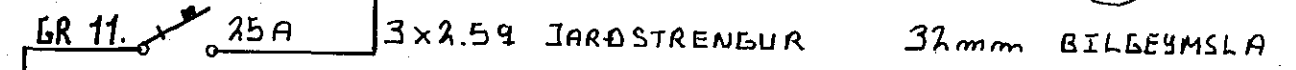
AFSTÖÐUMYND 1:500

BILGEYMSLA T 1.1



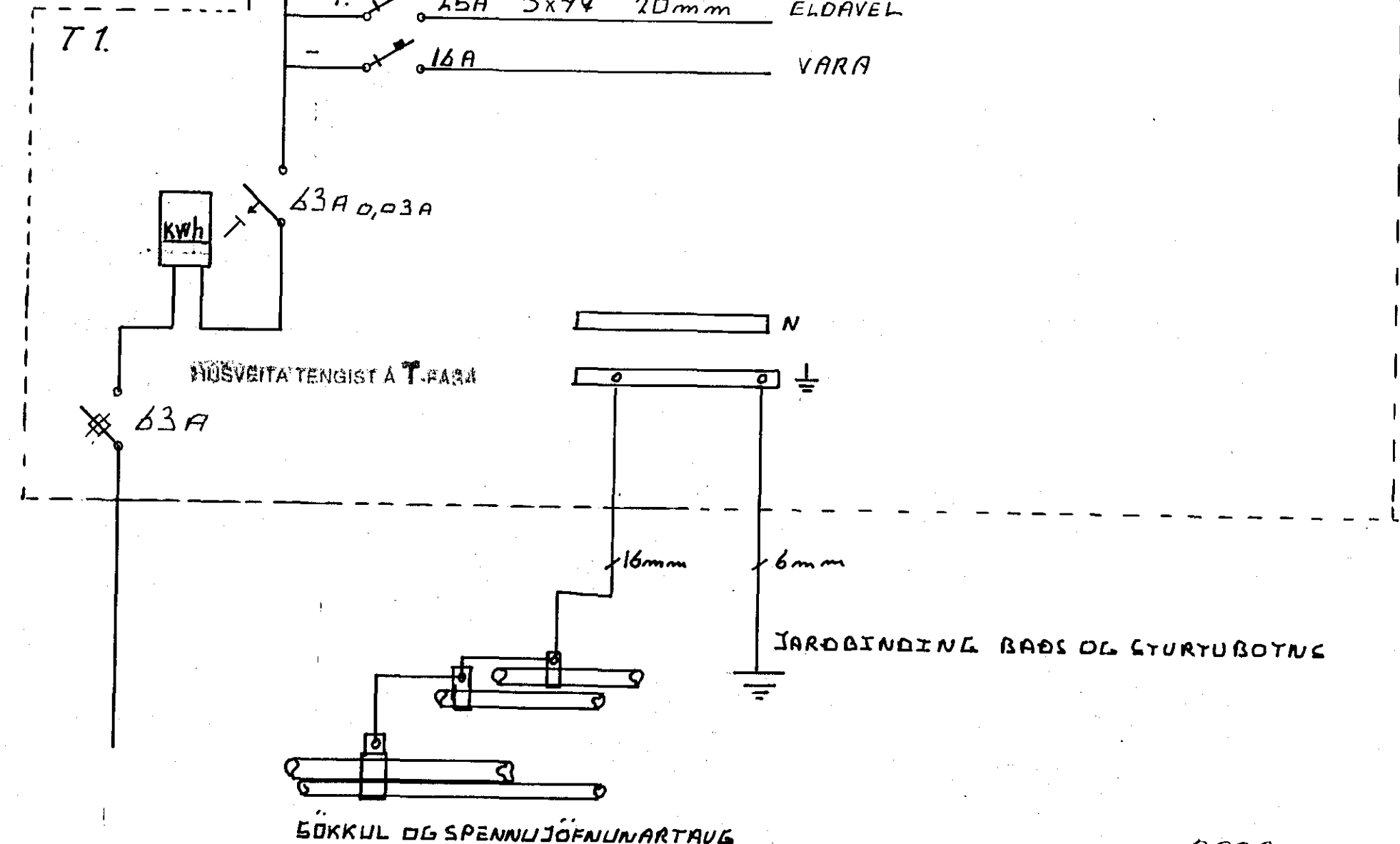
NEMA ANNAAS
SE GETIÐ

Samþykkt 10-8 1988
VEGNA FULLNADARFRÁGANGS
Jónas Stefánsson
f.h. Rafveitu Hafnarfjarðar



- 10. 10A 3x1.5q 16mm BAD. HERB. HERD
- 9. 10A HERB. HERB
- 8. 10A STÖFA GARDSKALI
- 7. 10A BANGUR 1H OG 2H
- 6. 10A PVOTTAH. AND. ELDH. GEYMSLA
- 5. 16A TENGLI ELDH,
- 4. 16A TENGLAR ELDH
- 3. 16A PUKARI
- 2. 16A PVOTTAVEL
- 1. 25A 3x4q 20mm ELDAVEL
- 16A VARA

Innlök samþykkt 10.18. 1988
f.h. RAFVEITU HAFNARFJARÐAR
Albert Hristjánsson
HÚSVEITA TENGIST Á T-FARNA



BÖKKUL OG SPENNUJÖFNUNARTAVEL

JARDBINDING BADS OG STURTUBOTNS

TEIKNING NR. 2593

A.J. RAEVERKTAKAR STUÐLABERG 80
TÖFLUR, AFSTÖÐUMYND, SKURÐUR,
TEIKNAD Jónas Stefánsson