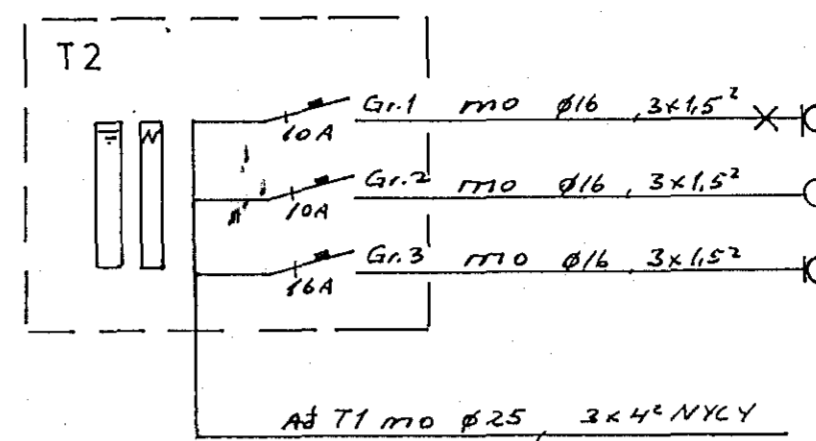
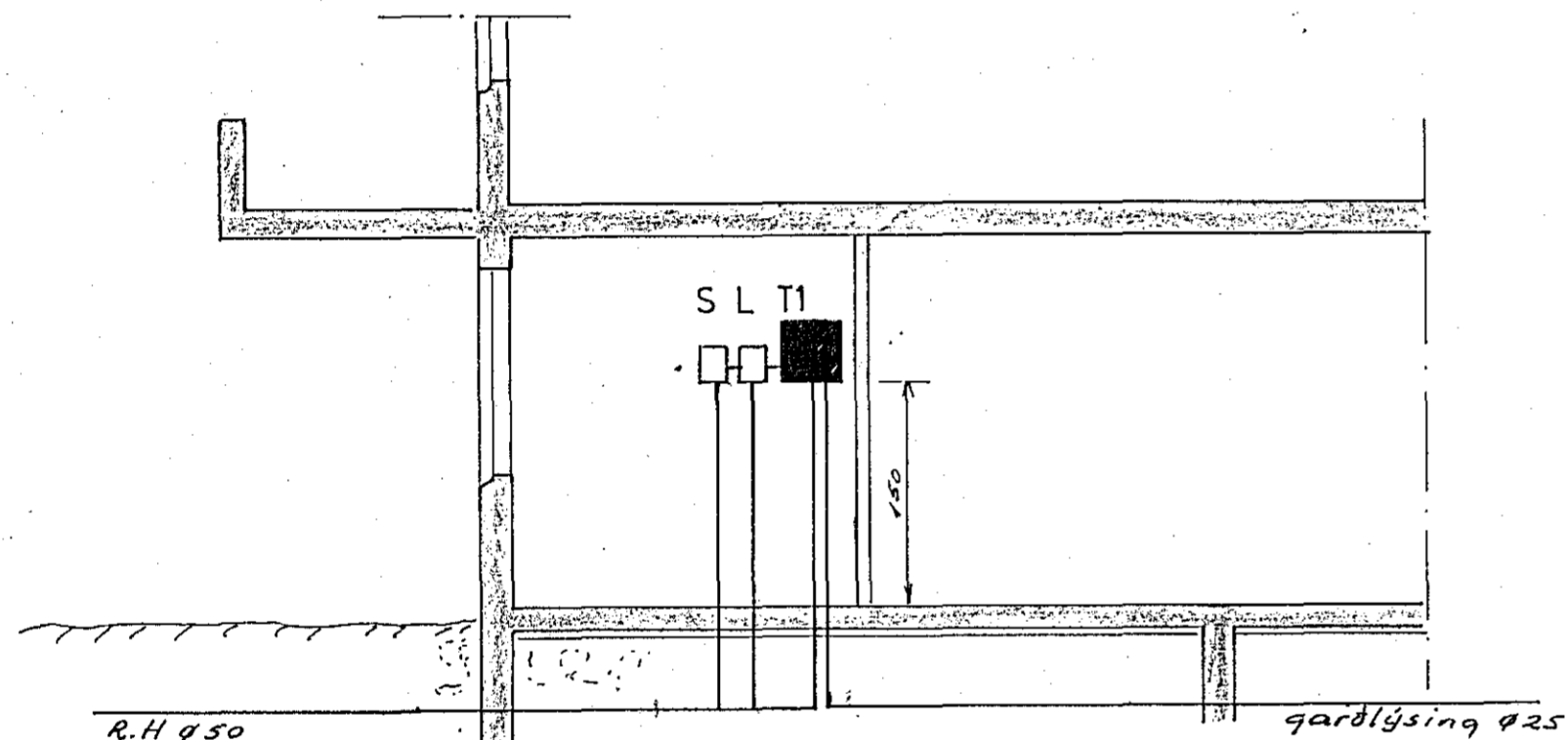


snid bilgeymslu Mkv. 1:100



- Gr.1 m0 Ø16, 3x1,5<sup>2</sup> X Ljós og tenglar bilgeymslu
- Gr.2 m0 Ø16, 3x1,5<sup>2</sup> O Hútaropnari
- Gr.3 m0 Ø16, 3x1,5<sup>2</sup> X Tengill 16A

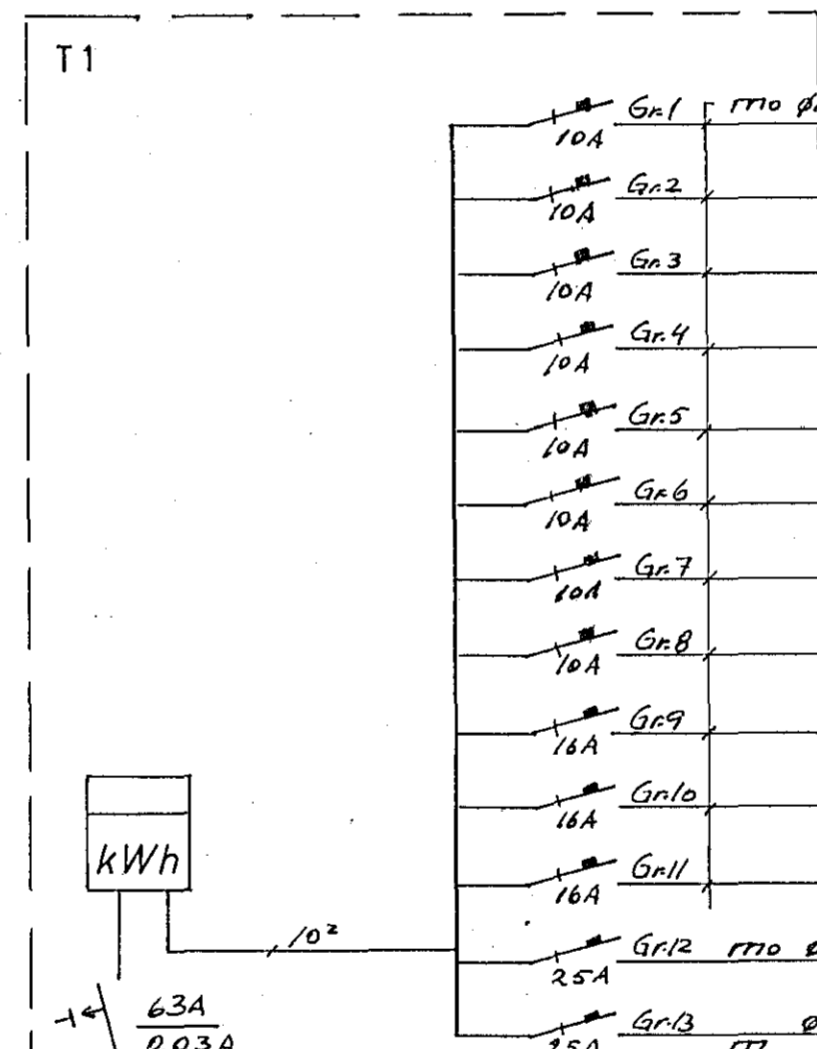
Að T1 m0 Ø25, 3x4<sup>2</sup> NYCY



Snid Mkv. 1:50

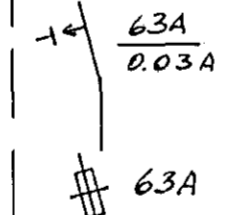
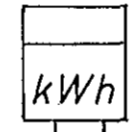
R.H Ø50  
Simi Ø50  
Lofnet Ø25  
bilgeymslu Ø25  
auka frá T1 Ø25

gardljosing Ø25

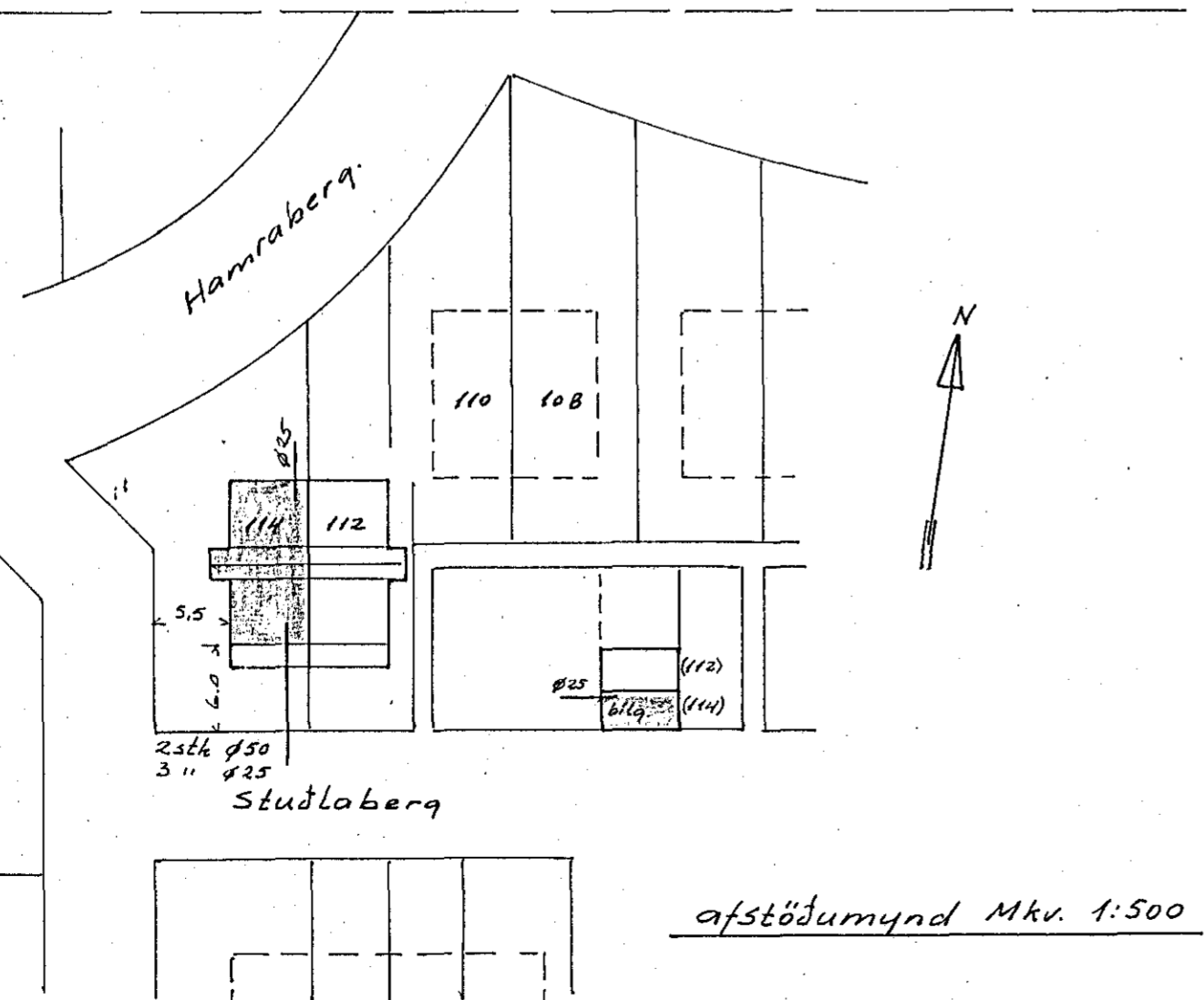
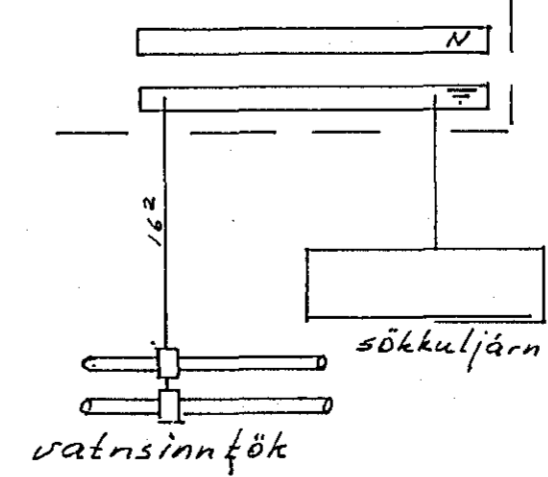


- Gr.1 m0 Ø16, 3x1,5<sup>2</sup> X Ljós og tenglar andd, eldhús
- Gr.2 X " puottur og bað
- Gr.3 X " hol og stigaq.
- Gr.4 X " stofa
- Gr.5 X " herb. efri hæð
- Gr.6 X " fjölsk. herb. efri hæð
- Gr.7 X " hjón og bað efri hæð
- Gr.8 X Tenglar eldhúsi
- Gr.9 X Tengill upppuottavél
- Gr.10 X " puottavél
- Gr.11 X " þurrkari
- Gr.12 m0 Ø20, 3x4<sup>2</sup> X " eldavél

Gr.13 m Ø25, 3x4<sup>2</sup> NYCY T2 Bilgeymslu.



inntak rafmagn  
220/380V



afstöðumynd Mkv. 1:500

NR.	BREYTING	DAGS	BR.
<b>STUÐLABERG 114 HAFNARFIRDI</b>			
AFSTAÐA SNID OG EINLÍNUMYND.		HANNAÐ	7.9.H
		TEIKNAD	7.9.H
		DAGS	júlí 88
		BLAÐ	2 AF2
		KVARDI	
		VERK NR.	183