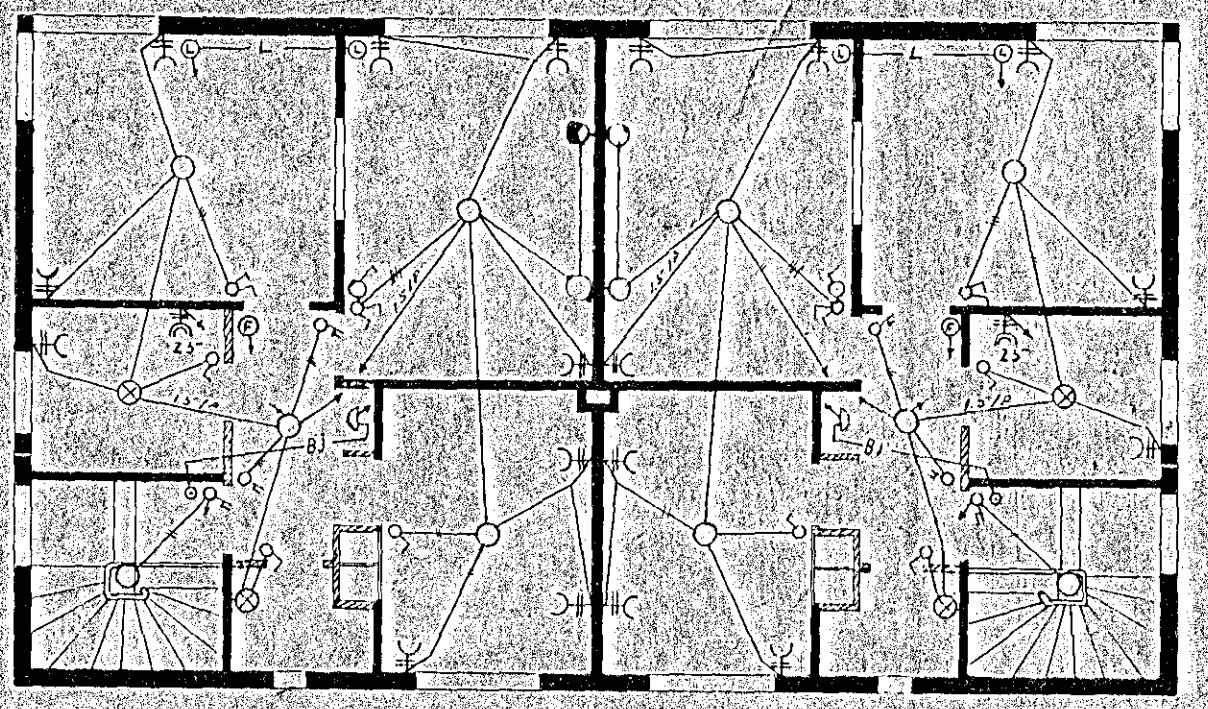
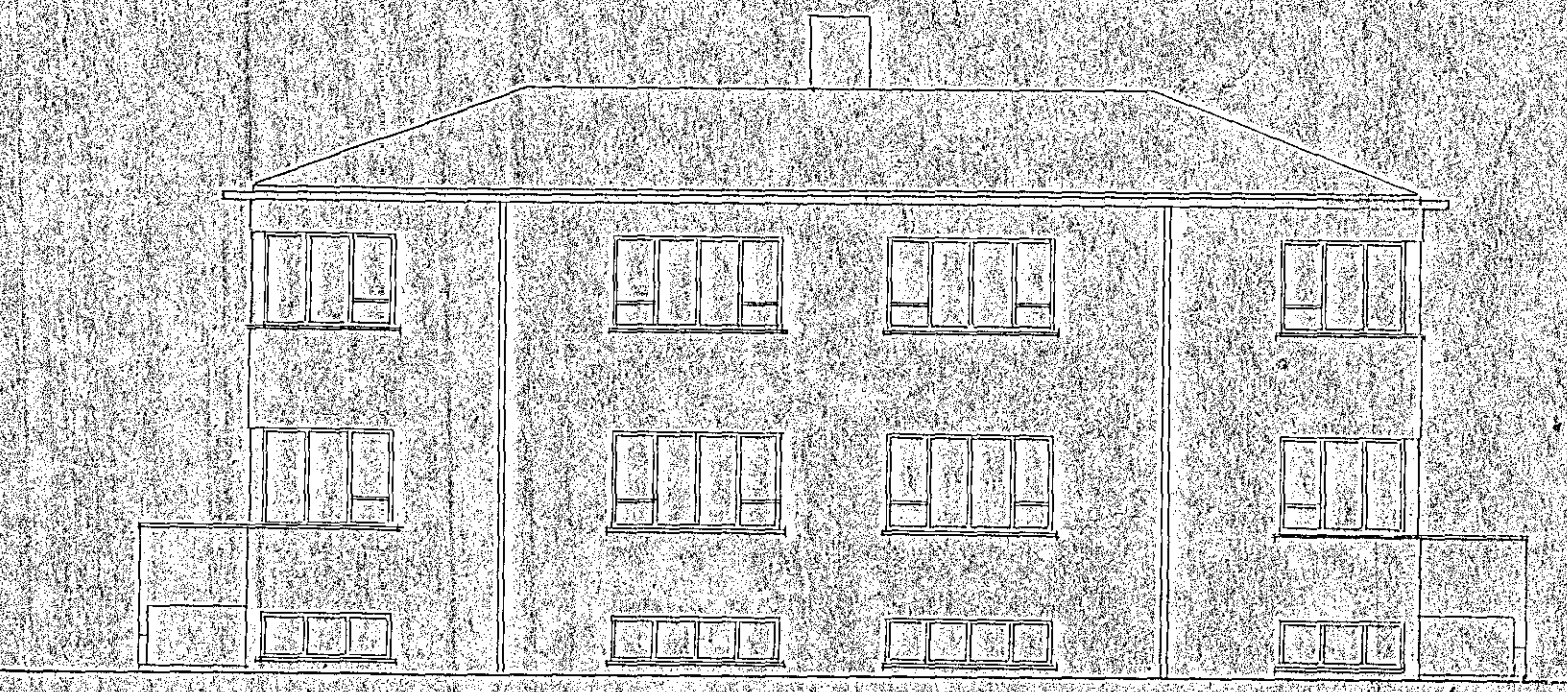


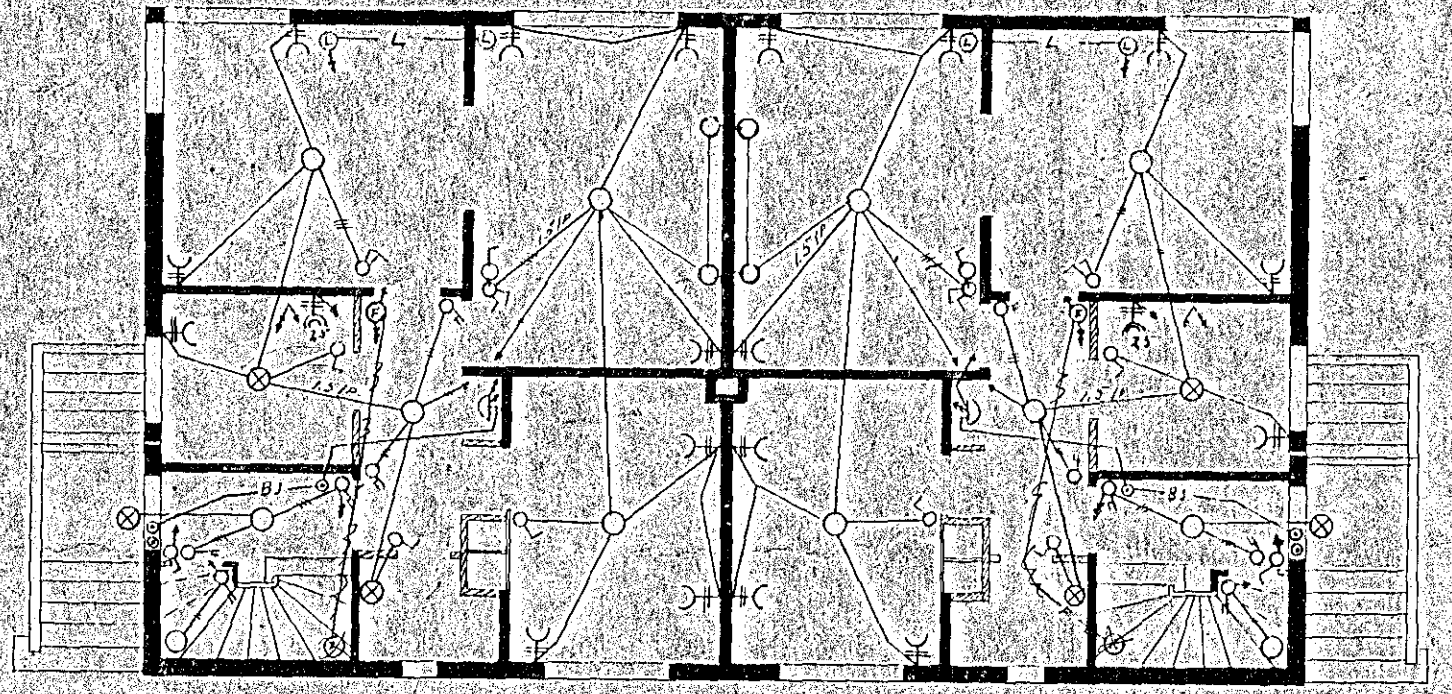
Alfaskerð 35-41



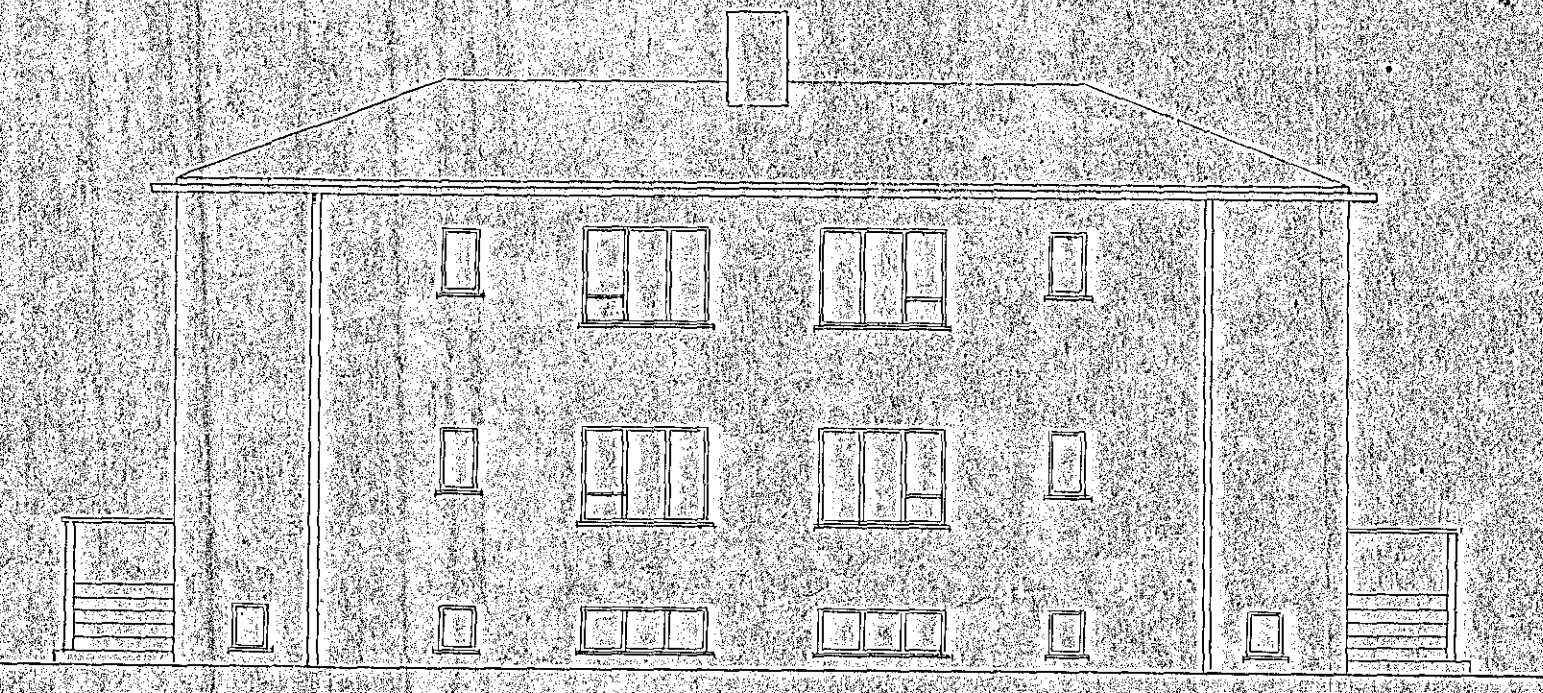
2 hæð



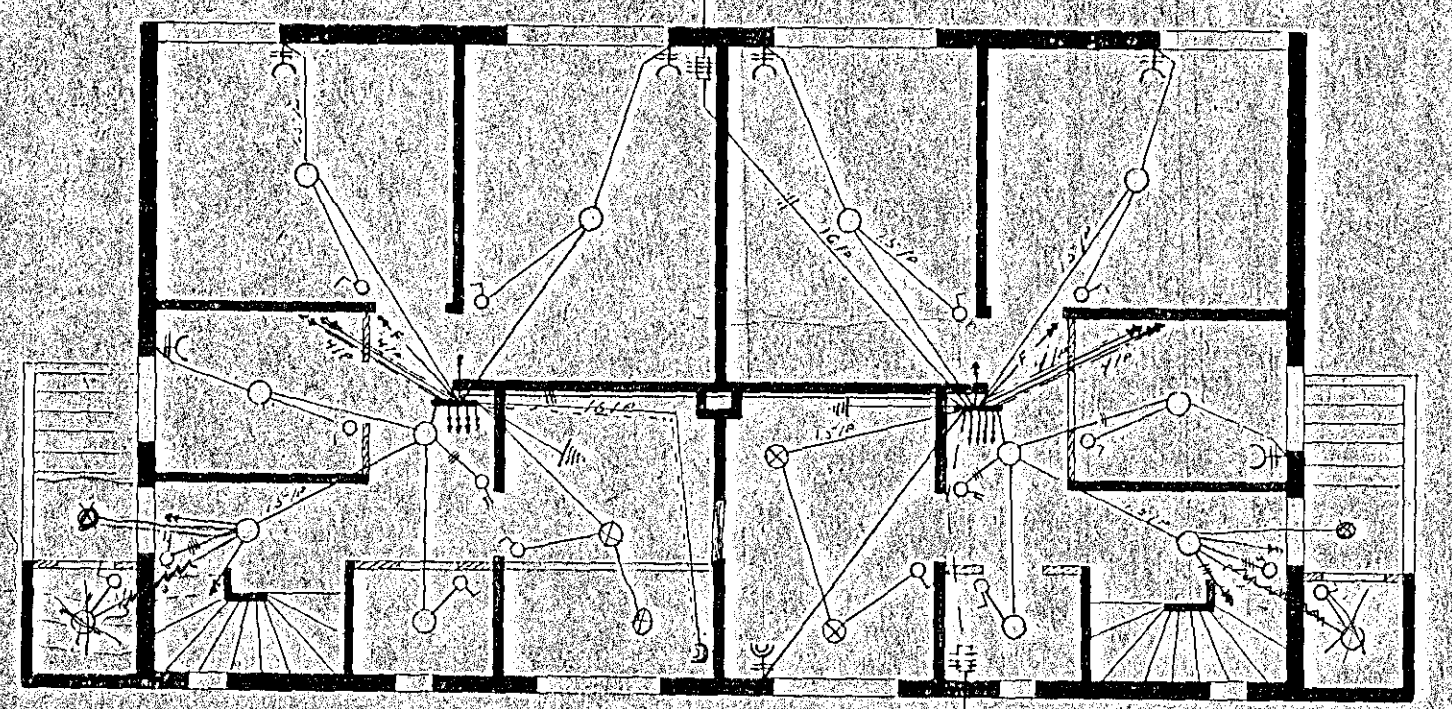
Súðurhléð



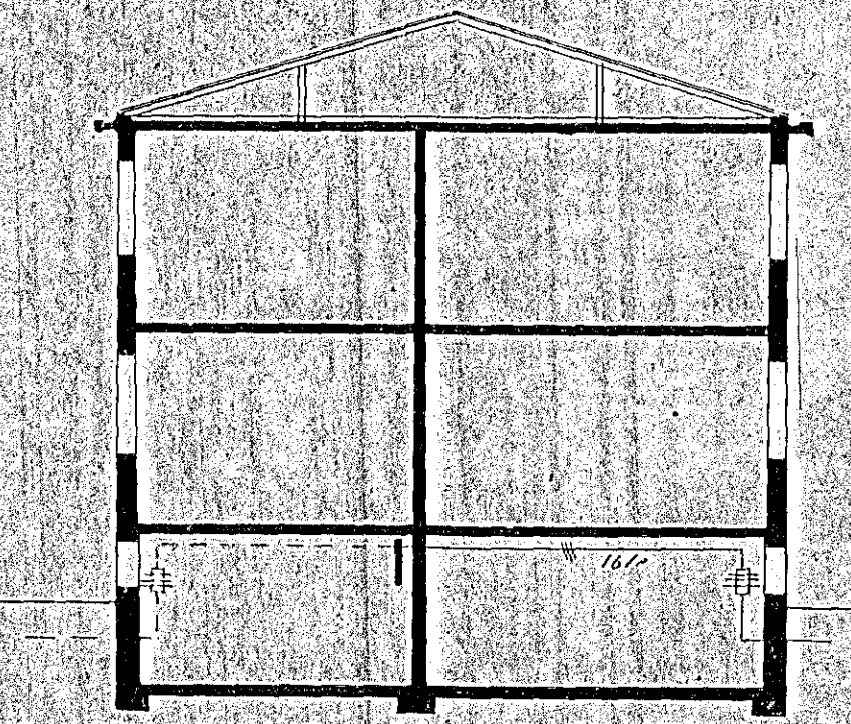
1 hæð



Norðurhléð



Kjallari



Þversnið



Göfl

H. 880 - 883
T. 118.

Samp. 15. Apr. 1946.



Alstæðingnd 1:500
Alfaskerð 35-41

118

Reykjavík 18. 10. 1945
Nikulás Friðriksson



118