

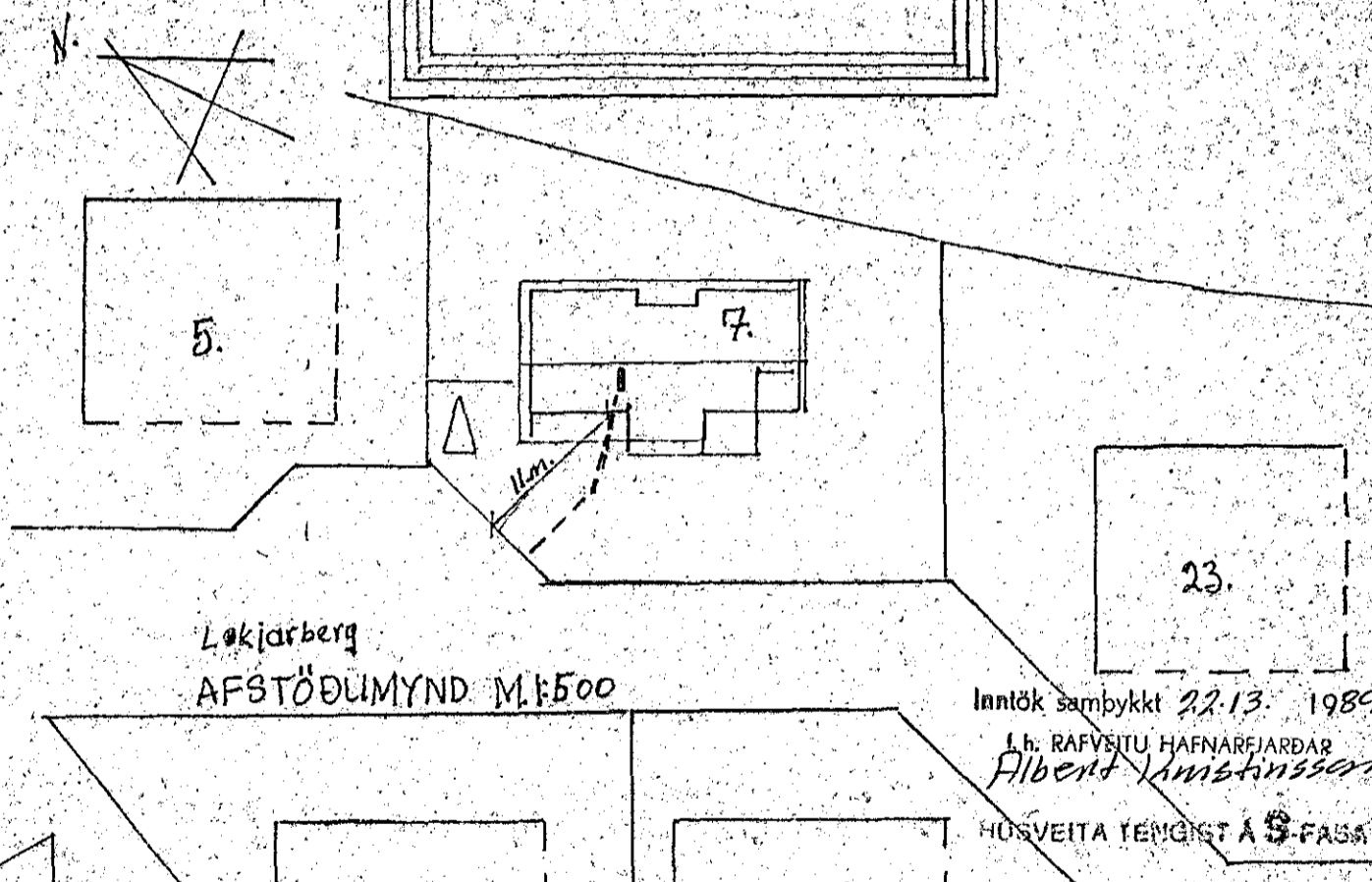
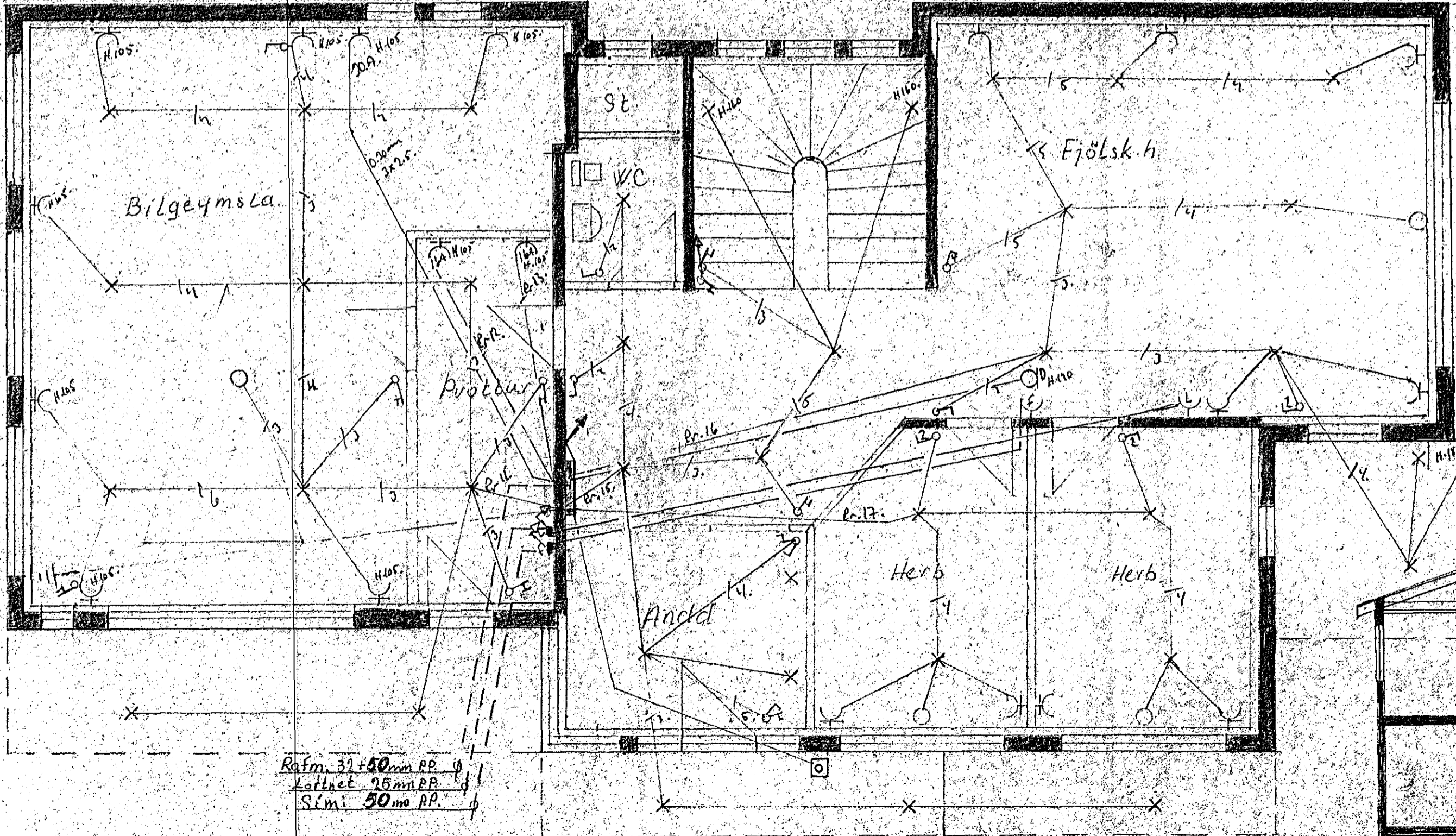
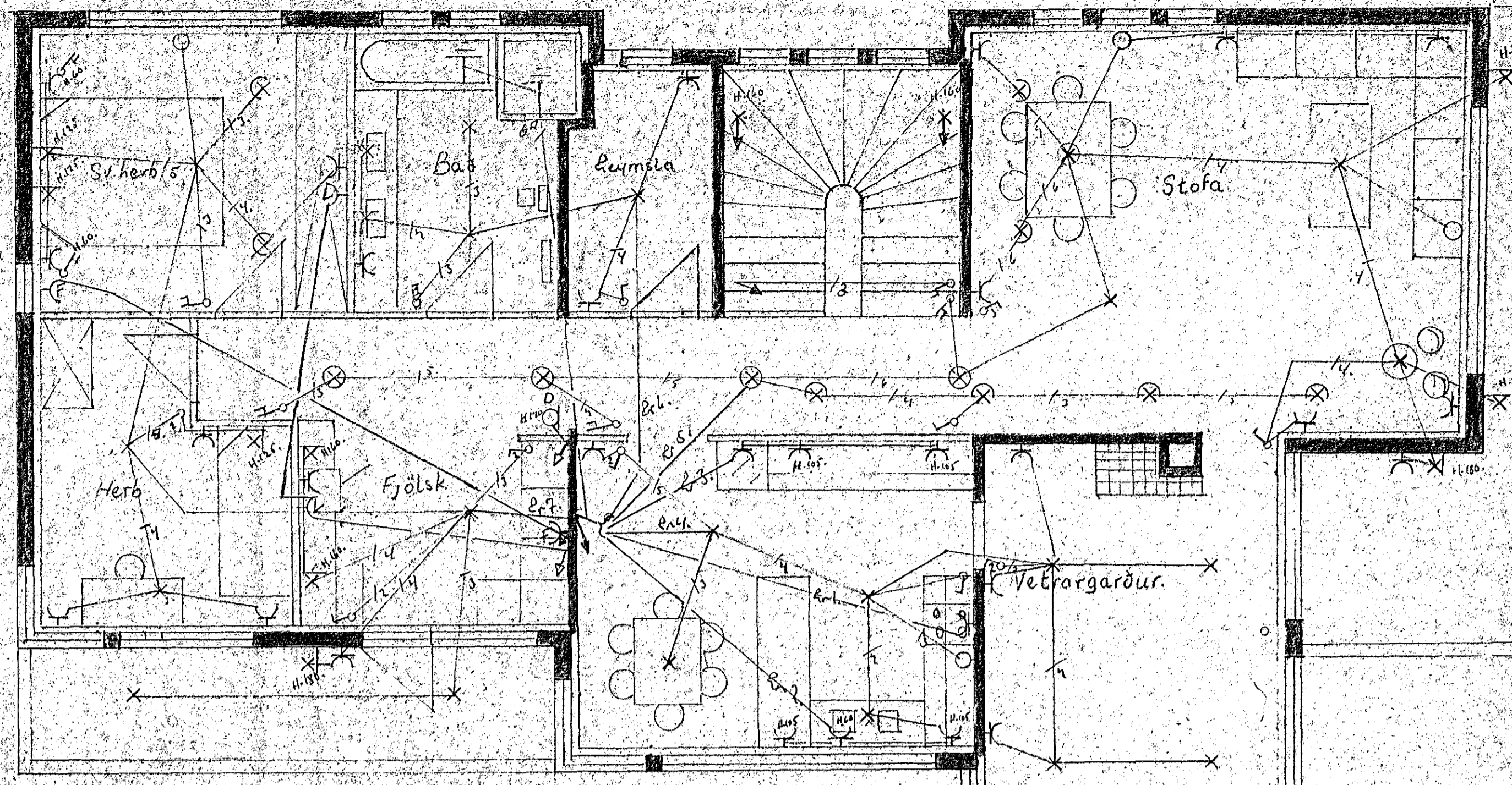
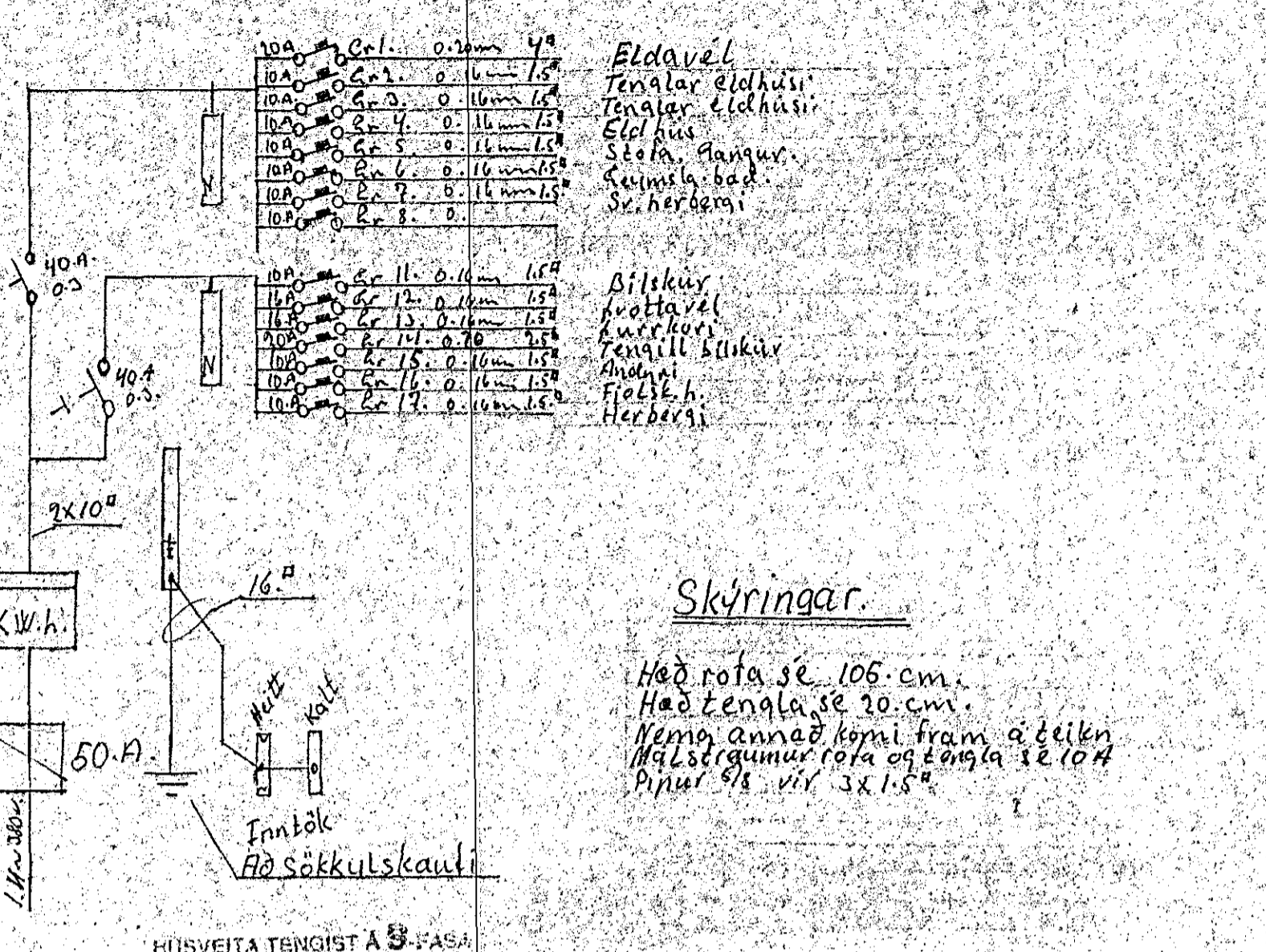
10A	Gr. 1.	0.2mm	4.9
10A	Gr. 2.	0.6mm	1.5
10A	Gr. 3.	0.16mm	1.6
10A	Gr. 4.	0.16mm	1.5
10A	Gr. 5.	0.16mm	1.6
10A	Gr. 6.	0.16mm	1.5
10A	Gr. 7.	0.16mm	1.5
10A	Gr. 8.	0.	

Eldavél
Tenglar eldhusi
Tenglar eldhusi
Eldhus
Stofa, gangur,
Svimsla bad
Sv. herbergi

Bílskur
Kvattavél
Kurrkorn
Tengill bílikv
Andari
Fjölsh.
Herbergi

Skýringar.

Hæð rota se 105 cm.
Hæð tengla se 20 cm.
Nema annað korni fram á teikn
Hálstengumur rota og tengla se 10A
Pipur 5/8 vör 3x1.5"



Rafm. 32+40mm PP.
Lathet 25mm PP.
Sími 50mm PP.

Lantök samþykkt 22.13. 1989
L.h. RAÐVEITU HAFNARFJARDAR
Albert Lambsteinsson
HUSVEITA TENGIST A 3 FASA
Samþykkt 22.3 1989
VEGNA FULLNADARFRÁGANGS
Jón Ólafsson
L.h. RAÐVEITU HAFNARFJARDAR

TEIKNING NR. 2672

Lækjarberg 7. H.F.	
Raflöen.	Jan '89.
Grunnmund 1:50.	
Snid 1:100.	blact lat. l.
Afstöðum 1:500.	
Einlimumund	s. 50910.
Ráðun þórarinnsson	