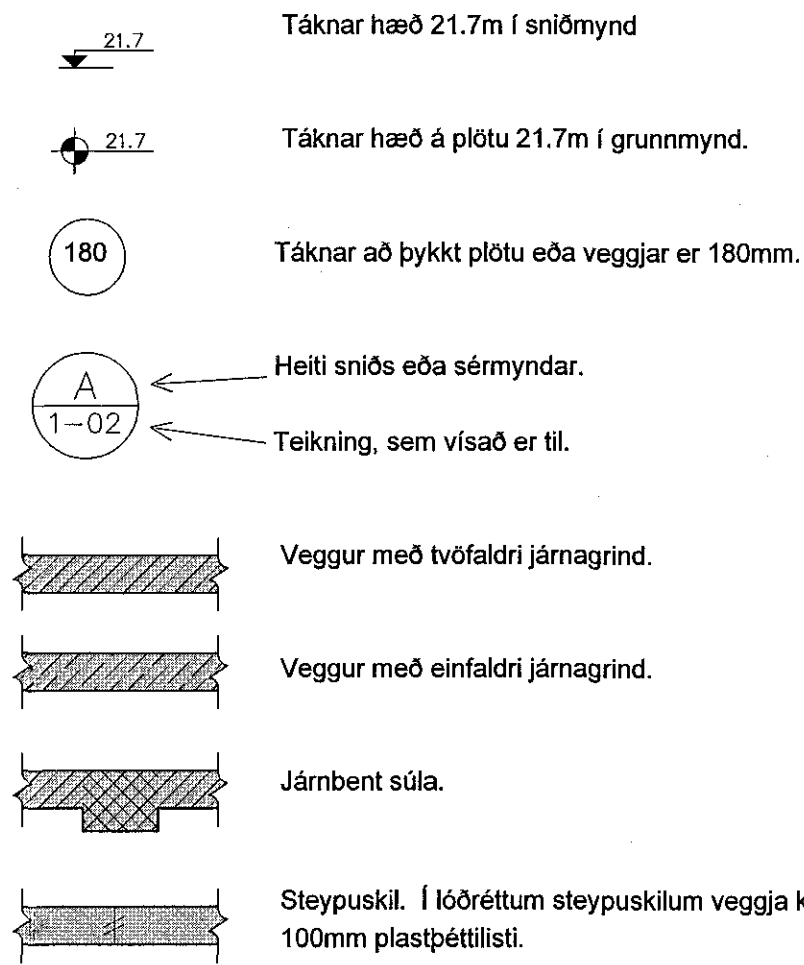


ALMENNT - (SKÝRINGAR Á UPPDRÁTTUM)

Hæðir eru í m í hæðarkerfi Reykjavíkur. Öll ónefnd mál eru í mm.



ÁLAGSFORSENDUR OG STADLAR:

Table of standards and specifications for various construction materials and methods, including concrete, steel, and timber.

FYLLINGARPÚÐI:

Text describing the filling process, including requirements for concrete strength and curing.

Table showing concrete filling specifications for different load capacities (10, 5, 0.5, 0.1, 15, 10 tonnes).

Text regarding concrete strength requirements for different load levels.

STEINSTEYPA

Steypuvirki skal vera skv. Eurocode 2.

Öll steinsteypa og steypuvinna skal vera í samræmi við IST 10, framkvæmdalokk B.

BROTPOLSFLOKKAR STEYPU:

Table listing joint types (SÖKKLAR, BOTNPLATA, PLÖTUR, ADRIR) and their corresponding strength classes (S-250, S-200, S-250, S-300).

SIGMÁL:

5 - 10 cm, án þjálniefna.

LOFTBLENDI:

Í alla steypu skal blanda loftblendi svo loftinnihaldi verði 6.0 ± 1.0%, mælt eftir dælingu, rétt fyrir niðurlögn.

VIS - TALA:

Strength ratio values for concrete grades S200, S250, and S300.

SEMENT:

Specifications for cement grades S250, S300, and S350.

D-max:

Maximum aggregate size for different concrete grades.

FJARLEGDARSTUÐULL:

Specification for reinforcement spacing: < 0.25

STEYPUVINNA:

Reinforcement must be placed in accordance with drawings.

Reference to IST 10 for reinforcement details.

STEYPUMÓT:

Table detailing construction tolerances for reinforcement placement and concrete quality.

Steypuskil:

Requirements for concrete strength and reinforcement placement.

Hreinsun móta:

Requirements for formwork cleaning and preparation.

JÁRNBENDING

Járnending skal vera skv. IST 10 I 3 og IST 10 I 16.1.

GERÐ OG MERKING JÁRNA:

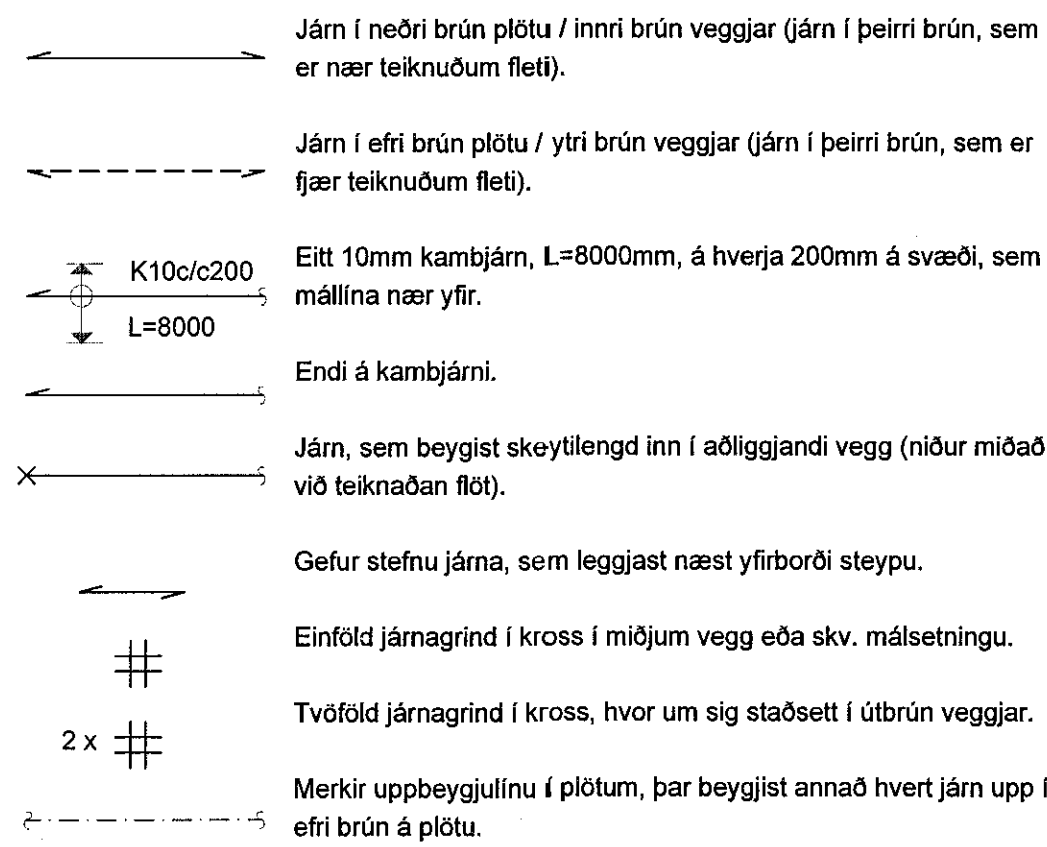
Almennt skal bendistál fullnægja kröfum Eurocode 2.

Specifications for reinforcement bars, including grades K and S.

Specifications for reinforcement bars, including grades K-S and K20S.

Specifications for reinforcement bars, including grade R.

Specifications for reinforcement bars, including grade K189.



SKEYTILENGD JÁRNA:

Reinforcement length specifications for different bar types.

Table showing reinforcement length specifications for different bar types and diameters.

Specifications for reinforcement length and diameter.

Bendinet skal skeyta um sem nemur að lágmarki:

- List of reinforcement bar types: a) 50d, b) tveir möskvar, c) þrjú þverjárn

MINNSTA FJARLEGD JÁRNA FRÁ STEYPUFIRBORDI:

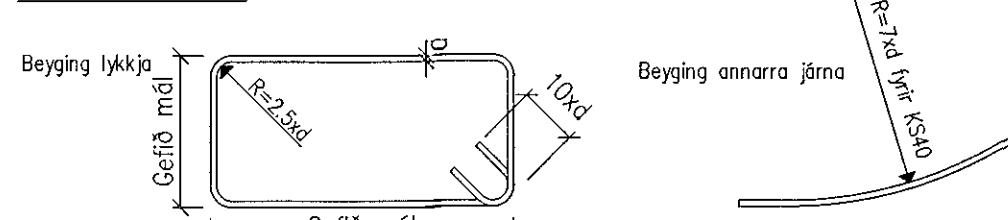
Table showing minimum reinforcement distance from formwork for different concrete grades.

Specifications for reinforcement distance from formwork.

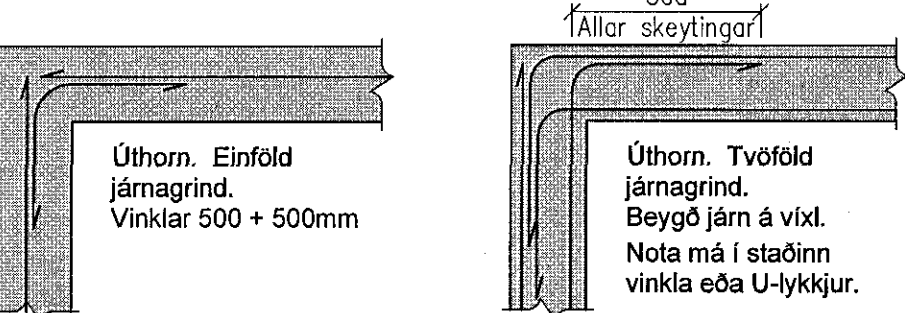
MINNSTA FJARLEGD MILLI JÁRNA:

Specifications for minimum reinforcement spacing.

BEYGING JÁRNA:



TENGINGAR JÁRNAGRINDA:



Tenging innveggjar við útegg.



TIMBURVIRKI

Timburvirki skal vera skv. Eurocode 7.

LÍMTRÉ:

Specifications for adhesive joints, including grades L-40 and U-limi.

KROSSVIÐUR:

Specifications for cross-sections, including grades COMBI 2-4 and COMBI II-IV.

ANNAÐ TIMBUR:

Specifications for other timber, including grades C18 and C24.

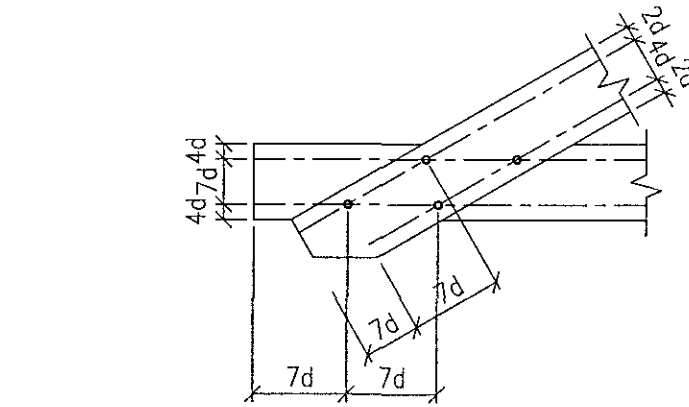
Specifications for timber used in construction, including grades C18 and C24.

Specifications for timber used in construction, including grades C18 and C24.

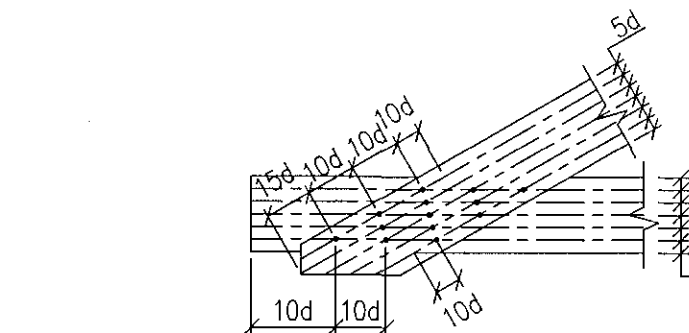
FESTINGAR OG FLEIRA:

Specifications for fasteners and other components, including grades BxL = 3xd.

Specifications for fasteners and other components, including grades BxL = 3xd.



Specifications for fasteners and other components, including grades BxL = 3xd.



Specifications for fasteners and other components, including grades BxL = 3xd.

Specifications for fasteners and other components, including grades BxL = 3xd.

Specifications for fasteners and other components, including grades BxL = 3xd.

Specifications for fasteners and other components, including grades BxL = 3xd.

Specifications for fasteners and other components, including grades BxL = 3xd.

Specifications for fasteners and other components, including grades BxL = 3xd.

Specifications for fasteners and other components, including grades BxL = 3xd.

STÁLVIKRI

Stálvirki skal vera skv. Eurocode 3.

Sampykkt þann

24. júlí 2015

Byggingarfulltrúinn í Hafnarfirði, St. 37.2 (annað en bendistál).

STÁLGEÐI:

Specifications for steel grades, including grades S235 and S275.

RYÐVÖRN:

Specifications for rust protection, including grades A and B.

Specifications for rust protection, including grades A and B.

Specifications for rust protection, including grades A and B.

Specifications for rust protection, including grades A and B.

BOLTAR:

Specifications for bolts, including grades A and B.

Specifications for bolts, including grades A and B.

Table for revision control (Breytingar) with columns for revision number and description.

ATHUGIÐ: Almennar skýringar gilda nema annað sé tekið fram á sérteikningum.

Handwritten signatures and initials.

Table for project information (ÁLFASKEIÐ 77 - viðbygging) including dates, location, and contact information.