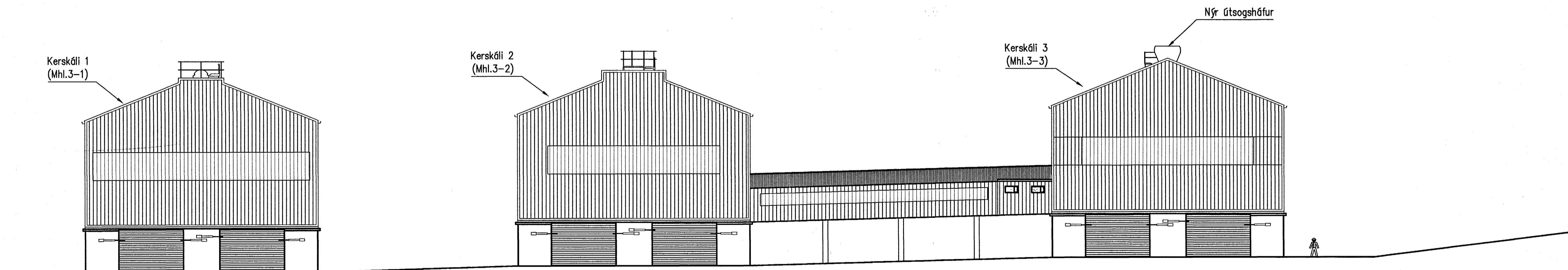


Austurgaffl
 1:200



Vesturgaffl
 1:200

Skýringar:
 Explanations:

- Álverið í Straumsvík
 Landnúmer 123154
 Þjódskrárnúmer 9998-6500
- Kerskáli 1; matshluti 3-1. Byggingarár 1967. Stærð 279.984m³
- Kerskáli 2; matshluti 3-2. Byggingarár 1970. Stærð 260.191m³
- Kerskáli 3; matshluti 3-3. Byggingarár 1996. Stærð 338.229m³



Breyt. Rev.	Breyting Revision	Dags. Date	Gert of Made by	Samþykkt Approved
Tilv. teikningar nr. ISAL Ref. drawing no. of ISAL		Samsetn. teikningar nr. ISAL Assembly drawing no. of ISAL		

This drawing is the property of the ICELANDIC ALUMINIUM CO. LTD. and handed out for personal use only. It may neither be copied nor made available to others without permission of the ICELANDIC ALUMINIUM CO. LTD. The receiver is liable for any misuse.

Fjöldi stúkkja Number of pieces	Hlutur Object	Áhrif Item	Efni Material	sg.:stk Weight (kg)	Lotus: f heild Total	Althugasemdir Remarks
IV III II I	KERSKÁLAR 1, 2 OG 3, STRAUMSVÍK ENDAGAFLAR - ÚTLIT					Málsvæði Scale 1:200 Stærð frumteikn. Format of orig. A1 CCno.-Eq type-Eq.no. 5012 AT 2650
Verktali / Supplier	Fjarhitun hf.	Dragsn. of appl. / Teknur. verki 164483-0	Breyt./Rev. 0			
Teknað Drawn	OP 07.05.99	Yfirfarir Checked	Samþykkt Approved			
algroup alusulisse primary materials		Dragsn. of ISAL / Teknur. ISAL 164483	Breyt./Rev. 0			
Teknað Drawn	Yfirfarir Checked	Samþykkt Approved				