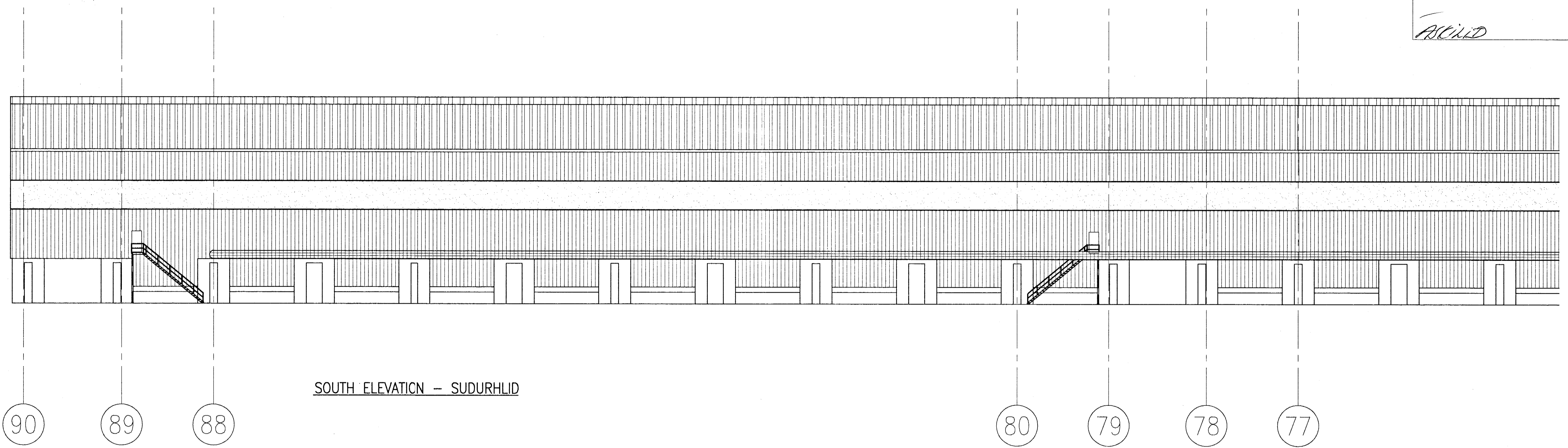
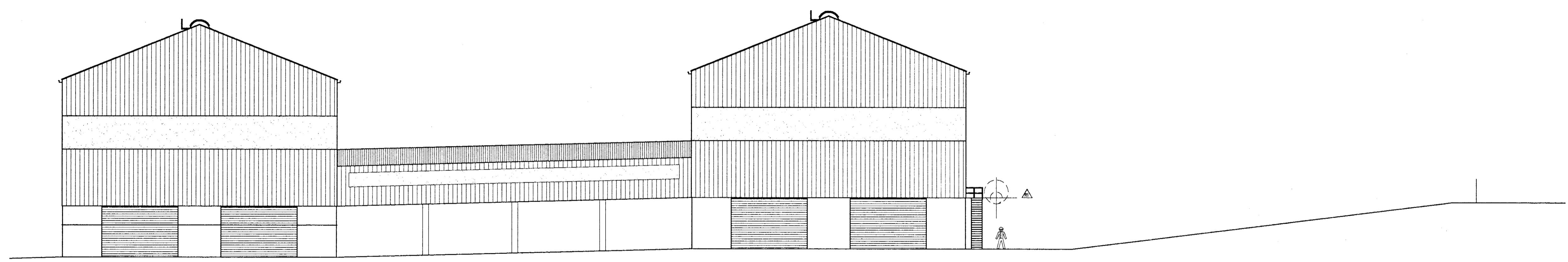


ACILD



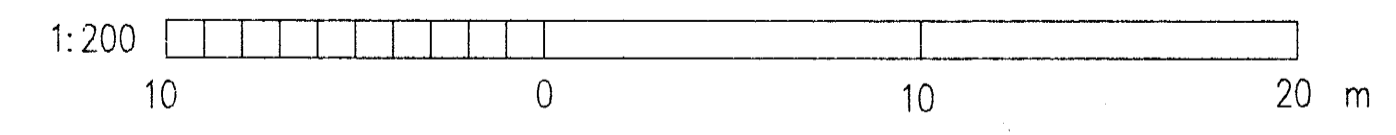
SOUTH ELEVATION - SUDURHLID



WEST ELEVATION - VESTURGAFL

Brunamálastofnun ríkisins
SAMPYKKT
13 FEB. 1996
Alfi Arnason

Nick Wadman



VST VST CONSULTING ENGINEERS Ltd.
Armulo 4 108 Reykjavik Iceland
Tel: +354 569 5000 Fax: +354 569 5010

DRAWN	NOV. 1995	THS
APPROVED	6. NOV. '95	NI
PROCESS	6. NOV. '95	NI
PROJECT	6. NOV. '95	NI
SCALE	1:500	FORMAT A1

ALUSUISSE
ALESA
ALUSUISSE ENGINEERING LTD.
ZURICH SWITZERLAND

ICELANDIC ALUMINIUM COMPANY LTD.

95.120 - 13.200
POTROOM NO. 3 KERSKALI 3
ARCHITECTURAL WORK
ELEVATIONS UTILIT
79000-32700
186.600

REV. NO.	DATE	REVISION	BY	APP.	REV. NO.	DATE	REVISION	BY	APP.	NOTES	REFERENCE DRAWING	DRAWING NUMBER
1	10/2 1996	MINOR REVISION	NI	J.I.								

This drawing is our property and given for personal use only. It may not be copied or made available to others without our permission. The receiver is responsible for any misuse.