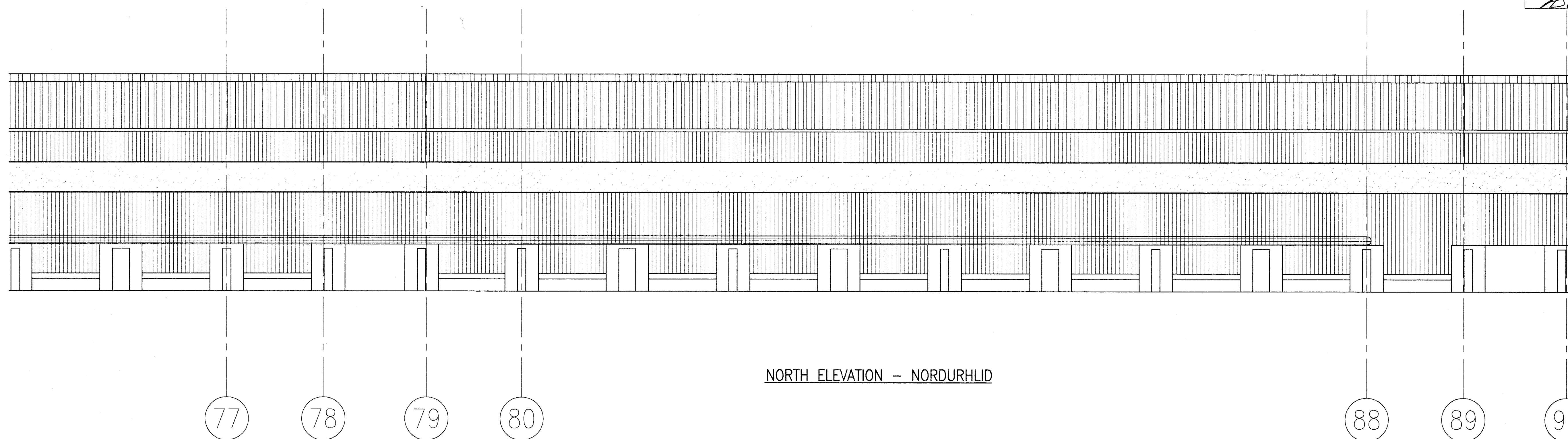
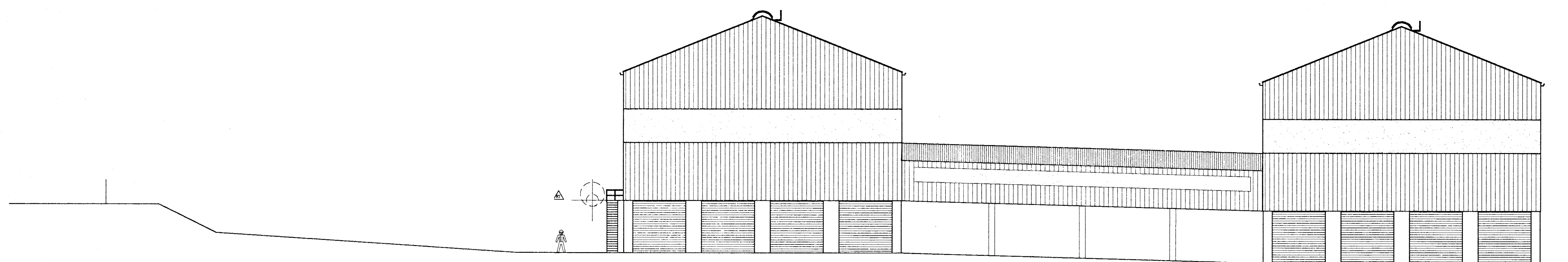


ASKILID



NORTH ELEVATION - NORDURHLID



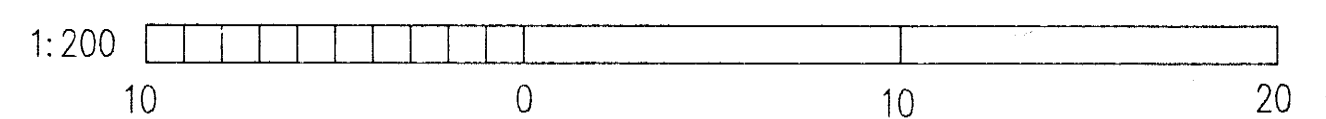
EAST ELEVATION - AUSTURGAFL

Brunamálastofnun ríkisins SAMPYKKT

13 FEB. 1996

Arni Arnason

Nicki haldan



VST VST CONSULTING ENGINEERS Ltd.
Armula 4 - 108 Reykjavík Iceland
Tel: +354 569 5000 Fax: +354 569 5010

ICELANDIC ALUMINIUM COMPANY LTD.

DRAWN	NOV. 1995	TNS
APPROVED	6. NOV. '95	NI
PROCESS	6. NOV. '95	NI
PROJECT	6. NOV. '95	NI
SCALE	1:500	FORMAT A1

95.120 - 13.201

POTROOM NO. 3 KERSKALI 3
ARCHITECTURAL WORK
ELEVATIONS UTJUT

ALUSISSE ALESA

ALUSISSE ENGINEERING LTD. ZURICH SWITZERLAND

79000-32701

REVISION 1

ISAL

ICELANDIC ALUMINIUM CO. LTD

186.601

REV. NO.	DATE	REVISION	BY	APP.	REV. NO.	DATE	REVISION	BY	APP.	NOTES	REFERENCE DRAWING	DRAWING NUMBER
1	10/2 1996	MINOR REVISION	NI	N.I.								

This drawing is our property and given for personal use only. It may not be copied or made available to others without our permission. The receiver is responsible for any misuse.

