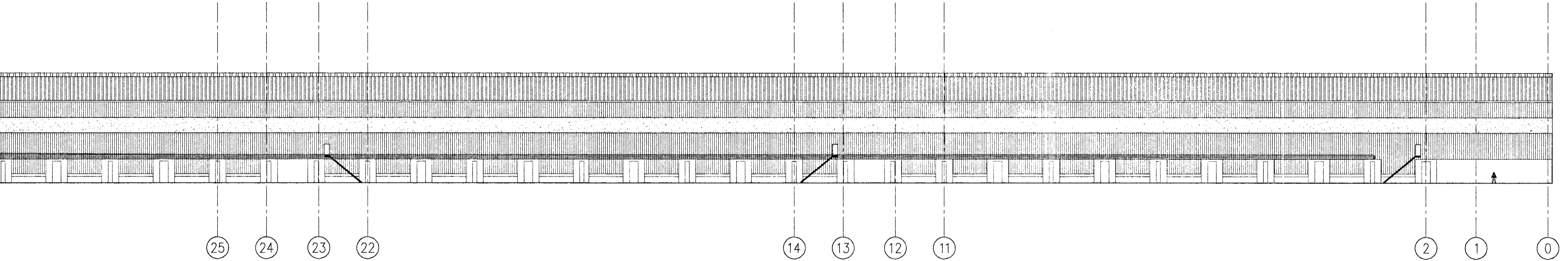
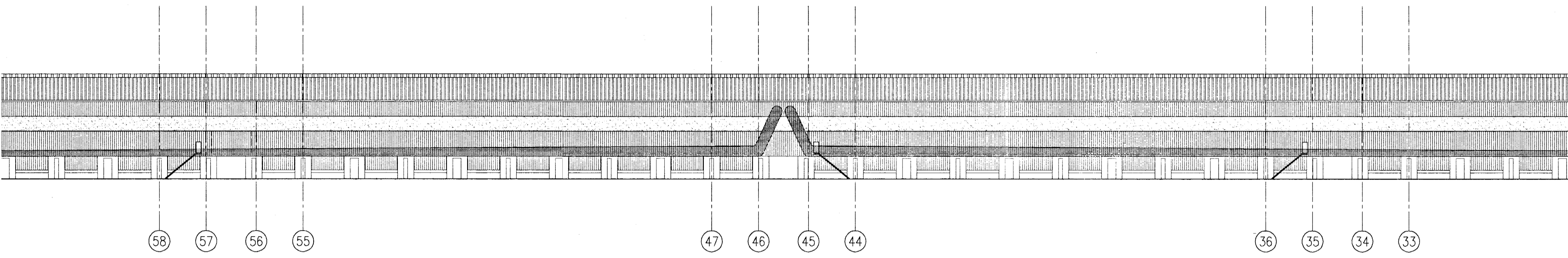
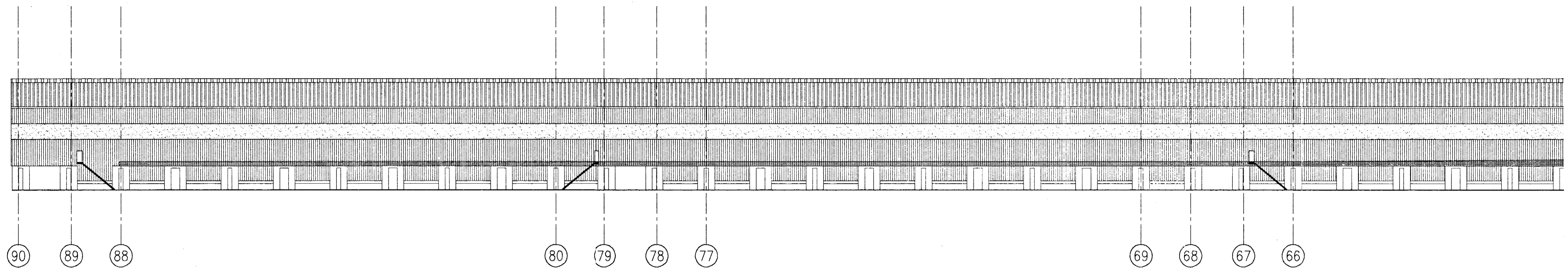
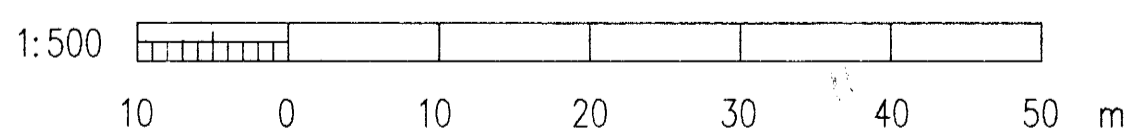
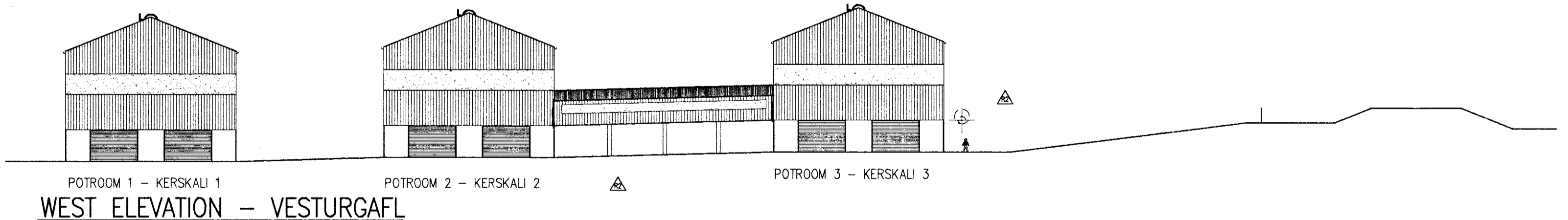


ASKILD



SOUTH ELEVATION – SUDURHLID



Brunamálastofnun ríkisins
 SAMÞYKKT
 13 FEB. 1996
 Arni Arnason

Niels Indridason

VST CONSULTING ENGINEERS Ltd. Armula 4 108 Reykjavík Iceland Tel: +354 569 5000 Fax: +354 569 5010		95.120 – 13.198	
ICELANDIC ALUMINIUM COMPANY LTD.	DRAWN NOV. 1995 APPROVED 6. NOV. '95 PROCESS 6. NOV. '95 PROJECT 6. NOV. '95 SCALE 1:500	THIS NI NI NI NI A1	POTROOM NO. 3 KERSKALI 3 ARCHITECTURAL WORK ELEVATIONS UTJLT
ALUSUSSE ALESA	ALUSUISSE ENGINEERING LTD. ZURICH SWITZERLAND	79000-32698	REVISION 2
ISAL	ICELANDIC ALUMINIUM CO. LTD	186.598	

REV. NO.	DATE	REVISION	BY	APP.	REV. NO.	DATE	REVISION	BY	APP.	NOTES	REFERENCE DRAWING	DRAWING NUMBER
2	10/2 1996	MINOR REVISION	NI	N.I.								
1	20/1 1996	BRIDGE – TENGIÞYGGING	KS	N.I.								

This drawing is our property and given for personal use only. It may not be copied or made available to others without our permission. The receiver is responsible for any misuse.

