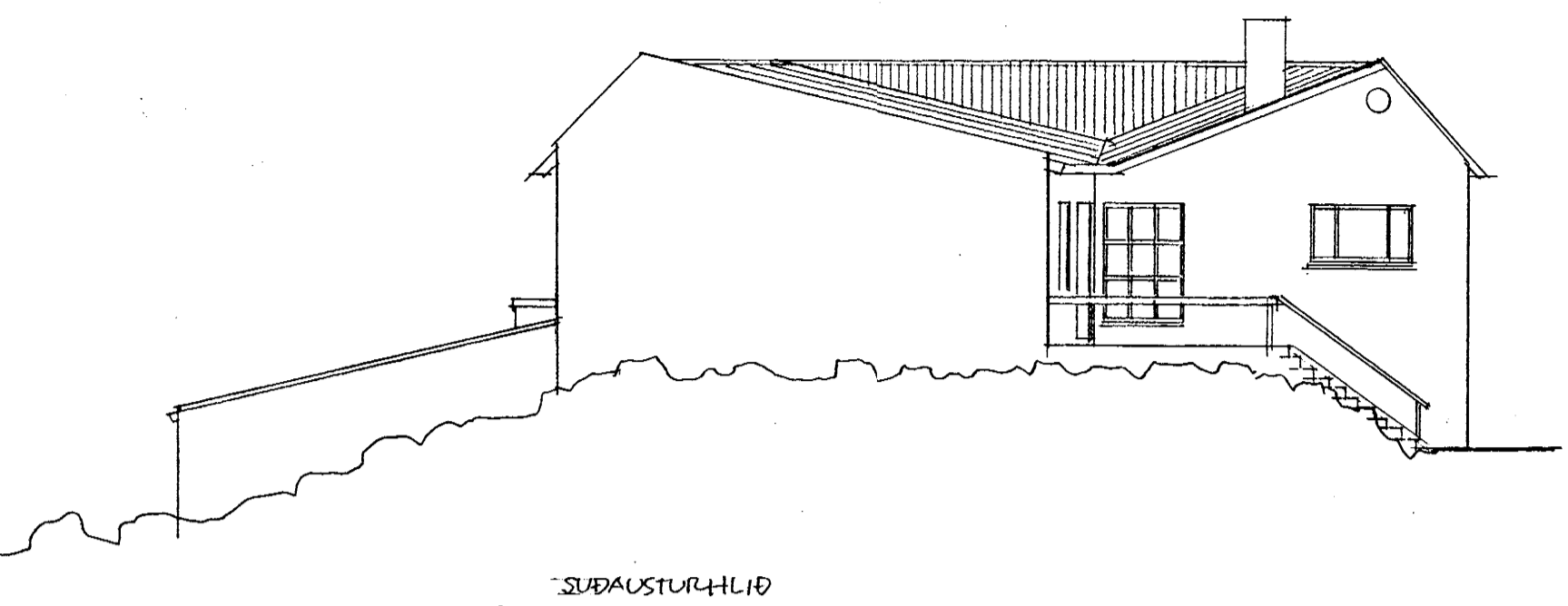
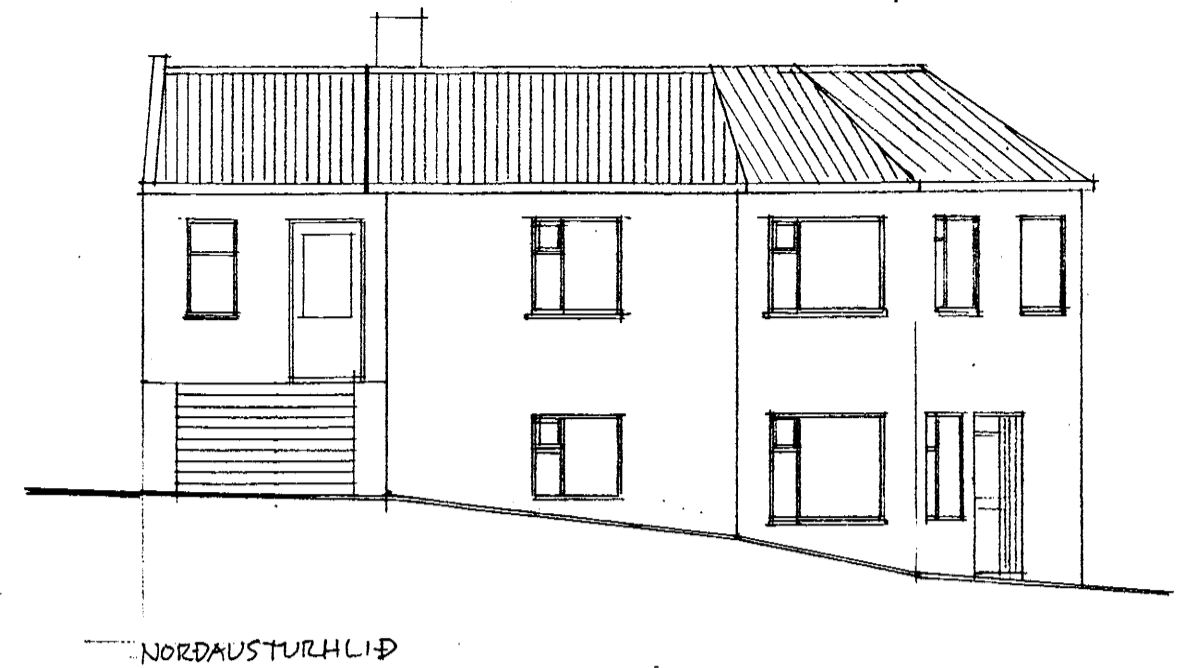


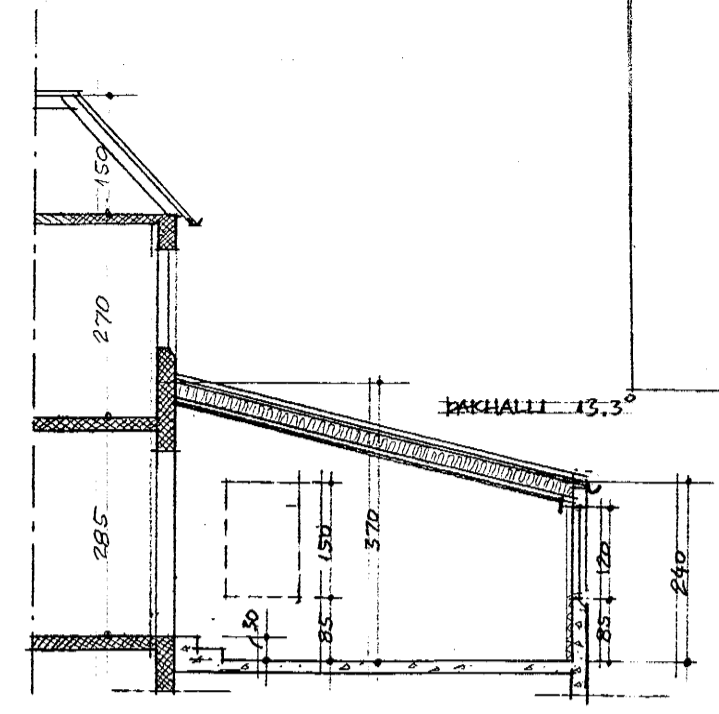
Samþykkt á fundi byggingarnefndar þann  
**03 JULI 1996**  
 Byggingafulltrúinn í Hafnarfirði  
 Erlendur Hjálmarsson



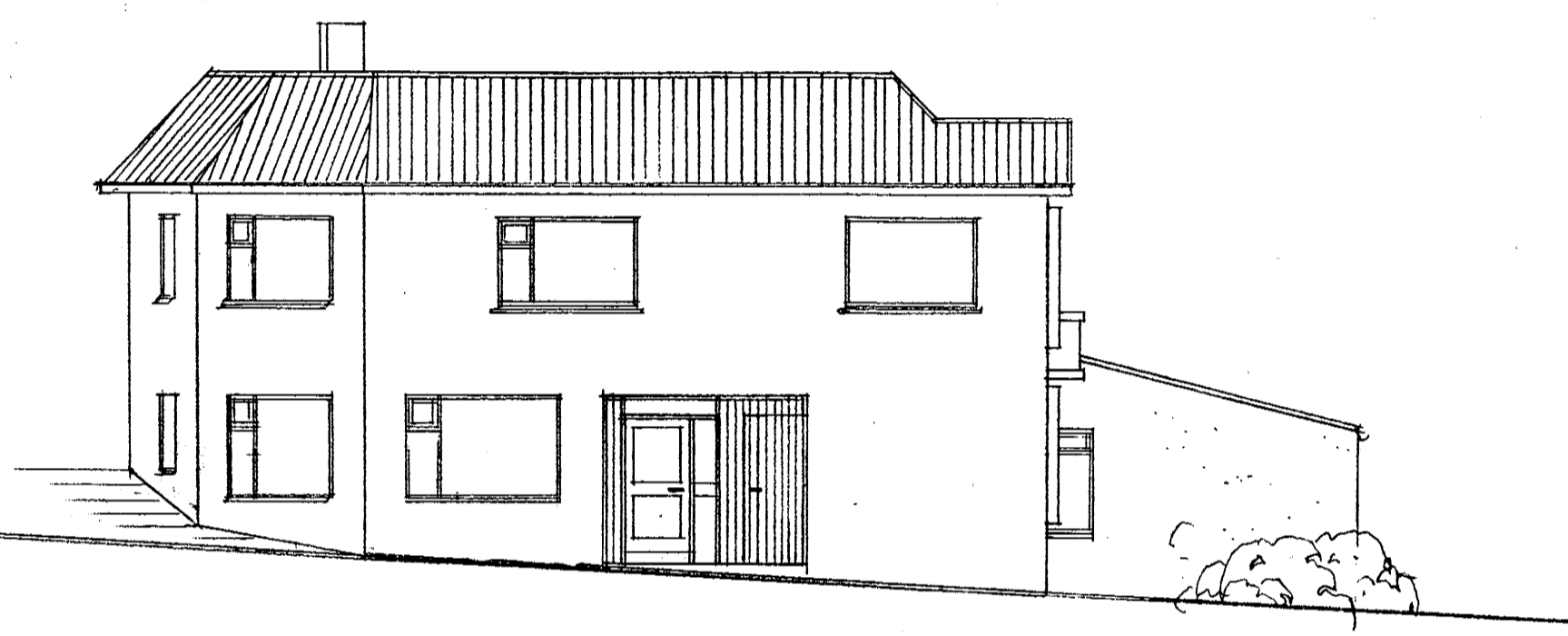
SÚÐAUSTURHLIÐ



NORÐAUSTURHLIÐ



SKURÐUR Í VIÐBYGGINGU

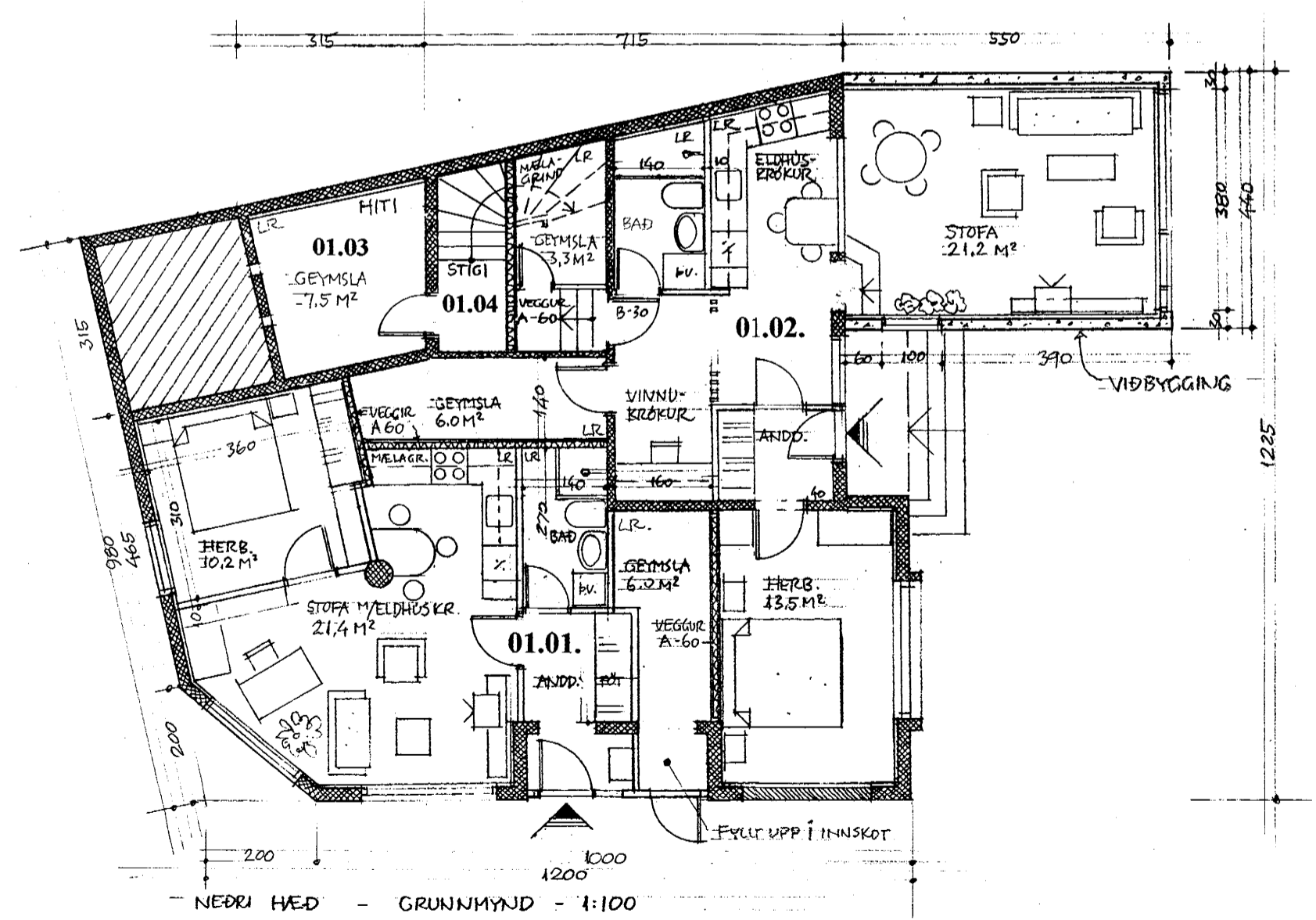


NORÐVESTURHLIÐ

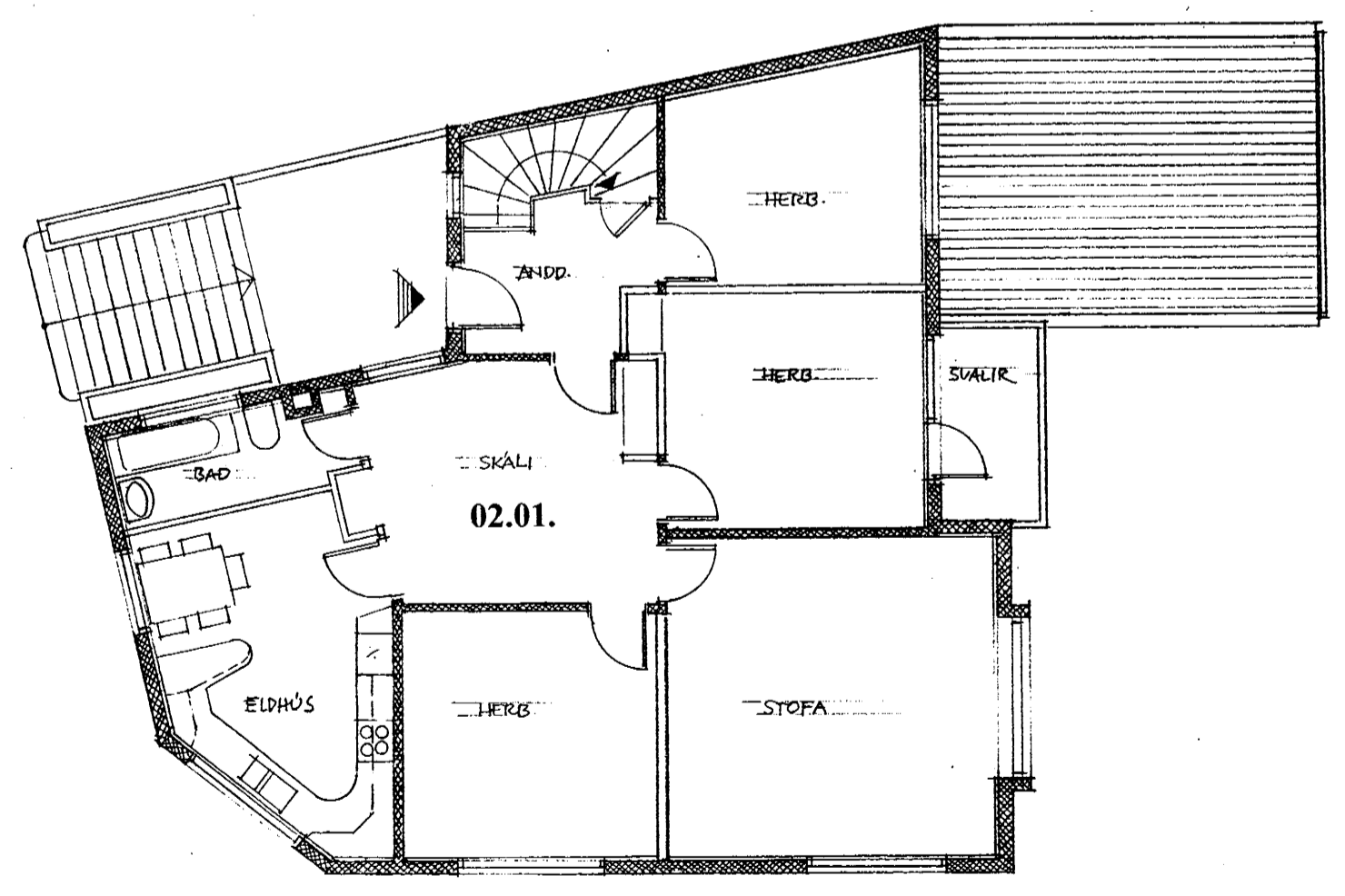


SÚÐVESTURHLIÐ

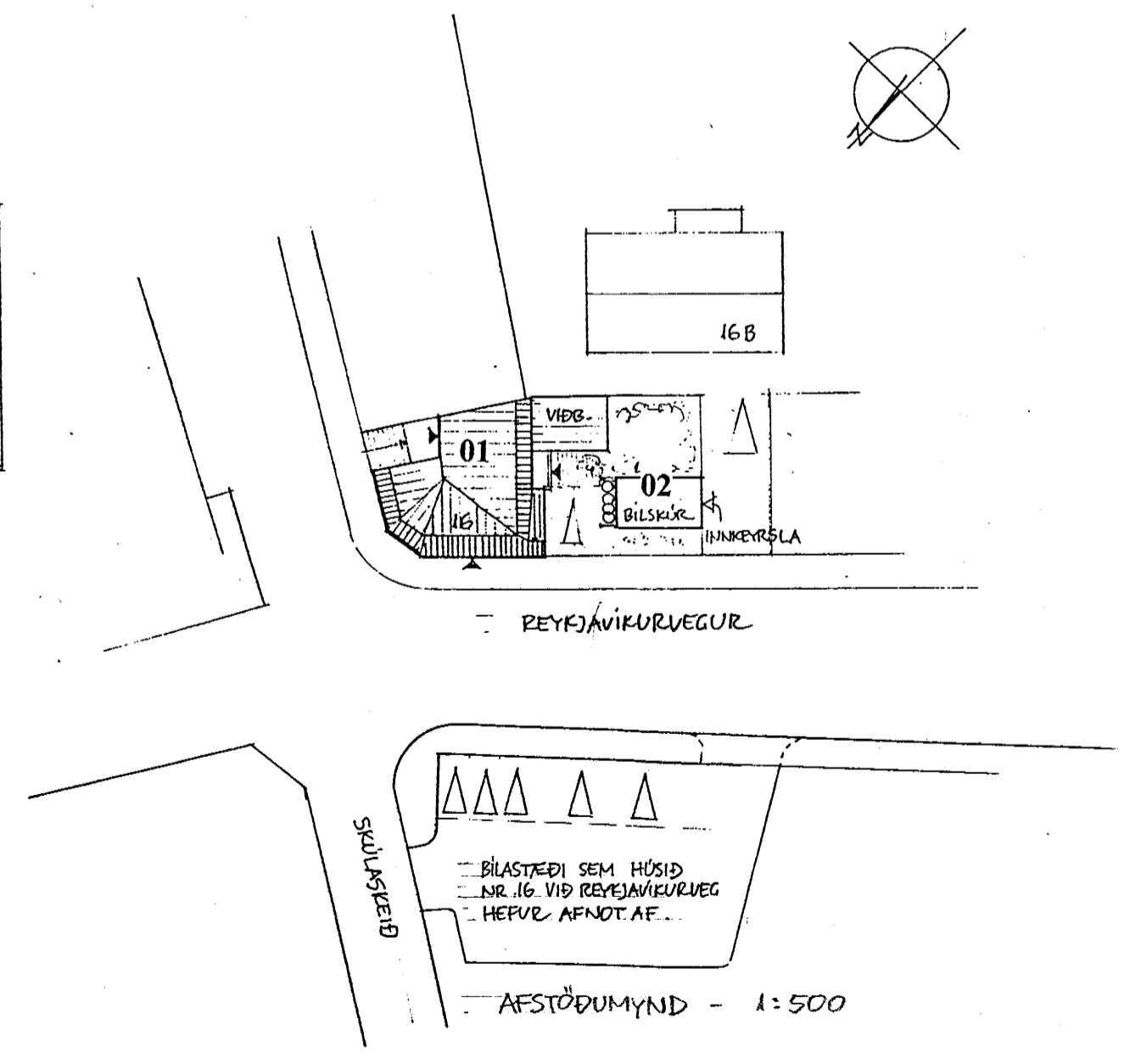
	Núv. flatarm.	stækkun	samtals
Íbúð 01.01:	51,6 m <sup>2</sup>	3,4 m <sup>2</sup>	55,0 m <sup>2</sup>
Íbúð 01.02:	57,5 m <sup>2</sup>	24,2 m <sup>2</sup>	81,7 m <sup>2</sup> <b>7,4 m<sup>2</sup></b>
Efri hæð 02.01:	117,7 m <sup>2</sup>		117,7 m <sup>2</sup> (óbr.)
Geymsla 01.03:	9,2 m <sup>2</sup>		9,2 m <sup>2</sup> (óbr.)
Stigi 01.04:	4,4 m <sup>2</sup>		4,4 m <sup>2</sup> (óbr.)
Íbúð 02.01:	131,3 m <sup>2</sup>		131,3 m <sup>2</sup>
<b>Samtals</b>	<b>240,4 m<sup>2</sup></b>	<b>27,6 m<sup>2</sup></b>	<b>268,0 m<sup>2</sup></b>



NEDRI HÆÐ - GRUNNMYND - 1:100



EFRI HÆÐ



AFSTÖÐUMYND - 1:500

<b>HELGI HAFLÍÐASON</b> ARKITEKT FAI	VERK REYKJAVÍKURVEGUR 16, HAFNARF. BREYTINGAR Á 1. HÆÐ	VERK.NR. 9621
ÞINGHOLTSSTR. 27, 101 REYKJAVÍK SÍMI 552 21 49 FAX 552 72 97	HEITI GRUNNMYNDIR, SKURÐUR, ÚTLIT AFSTÖÐUMYND	TEK.NR. 0.01
DAGS. Júlí '96 <i>Helgi</i>	KVARN 1:100, 1:500	