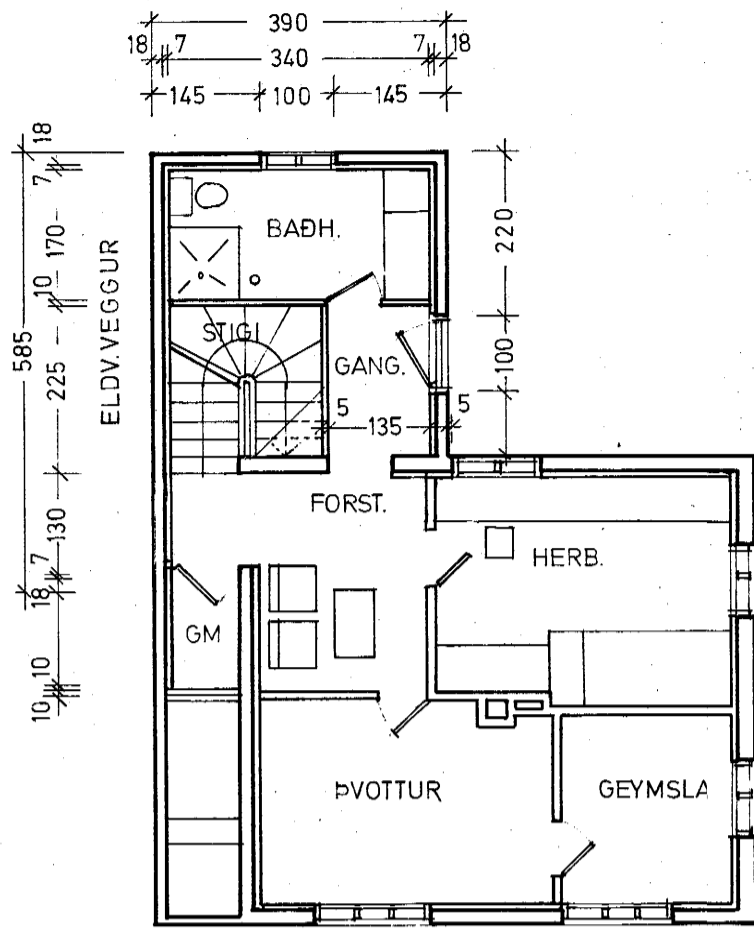
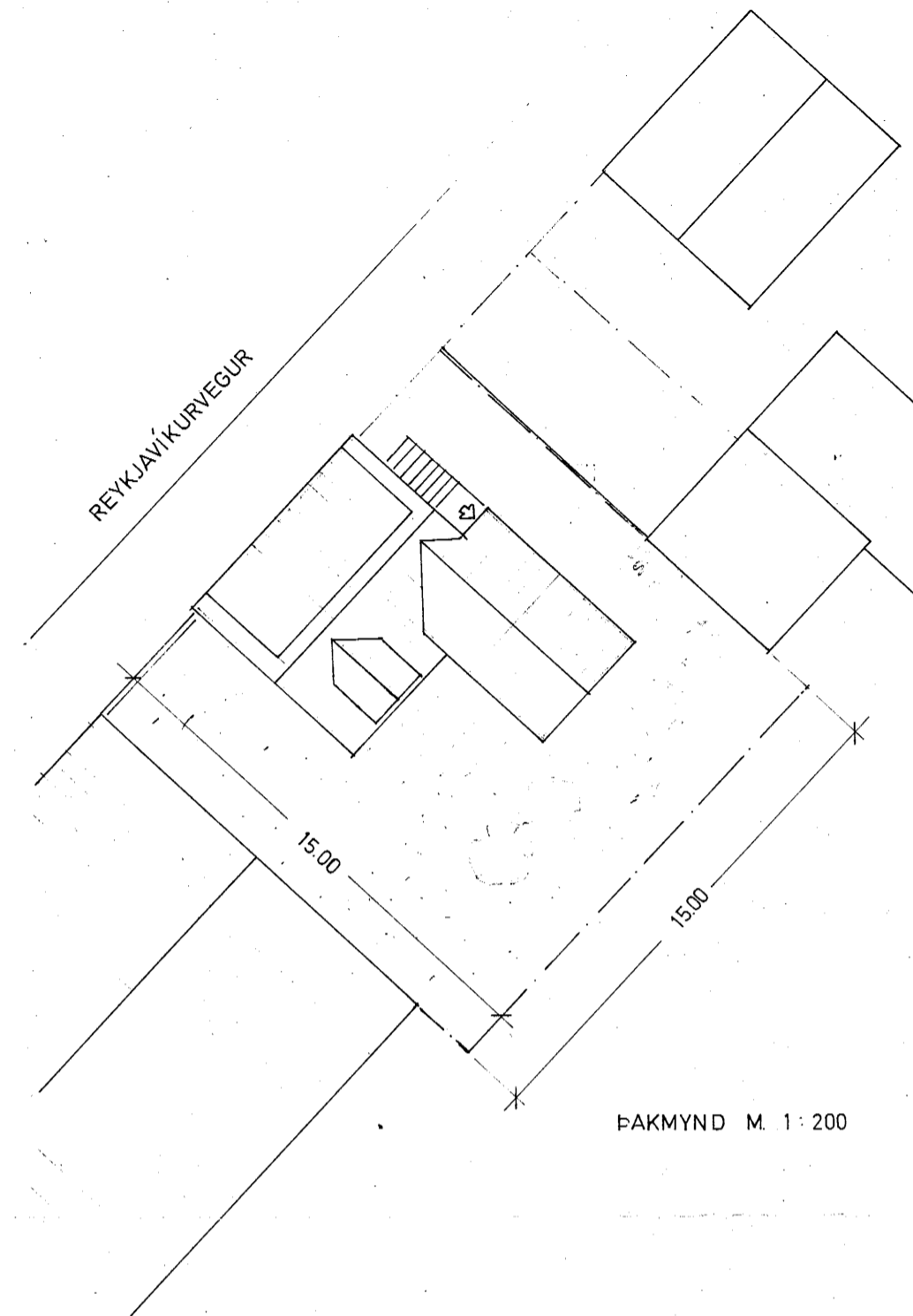


Samþykkt á fundi bygginga-
nefndar þ. 9/14 1980
BYGGINGAFULLTRÚIN
Í HAFNARFIRÐI
[Signature]

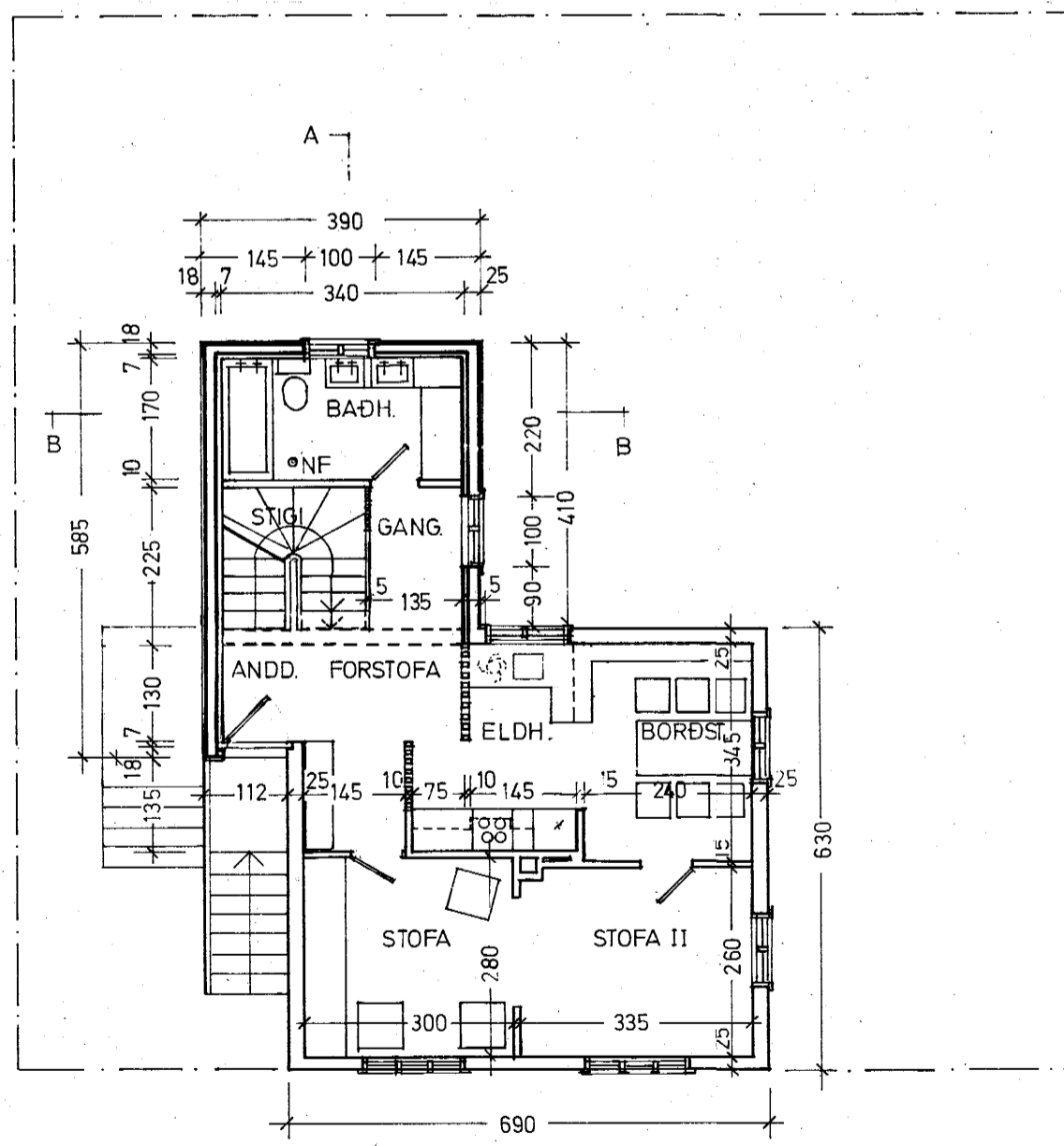


KJALLARI

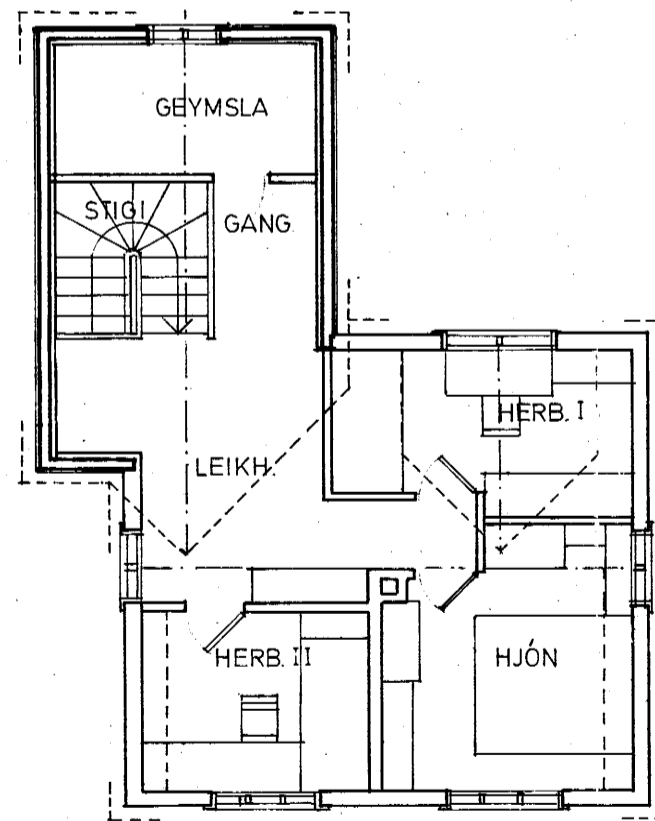


ÞAKMYND M. 1:200

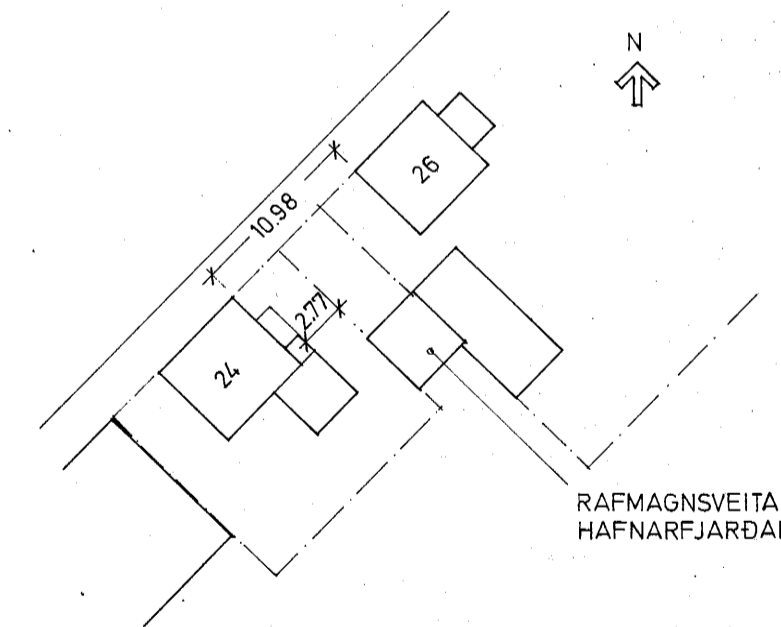
VIÐBYGGING:
HEILDARFLATARMÁL 46,3 m² br.
HEILDARRÚMMÁL 138,7 m³ br.
GRUNNFLATARMÁL 19,1 m²



GRUNNMYND 1. HÆÐ



RIS



AFSTÖÐUMYND M. 1:500

$$4,1 \times 3,9 = 15,99$$

$$1,75 \times 1,12 = 1,96$$

$$18 \text{ m}^2$$

$$\text{Kjallari } 18,0 \text{ m}^2 \times 2,65 = 47,7 \text{ m}^3$$

$$\text{I. } 19,0 \text{ m}^2 \times 2,65 = 50,35 \text{ m}^3$$

$$\text{And } 16,0 \times 1,9 = 30,4 \text{ m}^3$$

$$129,0 \text{ m}^3$$

$$97$$

$$128,7 \text{ m}^3$$

MAGNÚS K. SIGURJÓNSSON, ARKITEKT F.A.Í.
ÖLDUGÖTU 2. RVK. S. 2 64 09
HÚS NR. 24 VIÐ REYKJAVÍKURVEG HAFNARFIRÐI
EIG. SIGURDUR ÖRN BRYNJÓLFSSON

AFSTÖÐUMYND, GRUNNMYNDIR
M. 1:500, 1:100 7. 3. 1980

Magnús K. Sigurjónsson