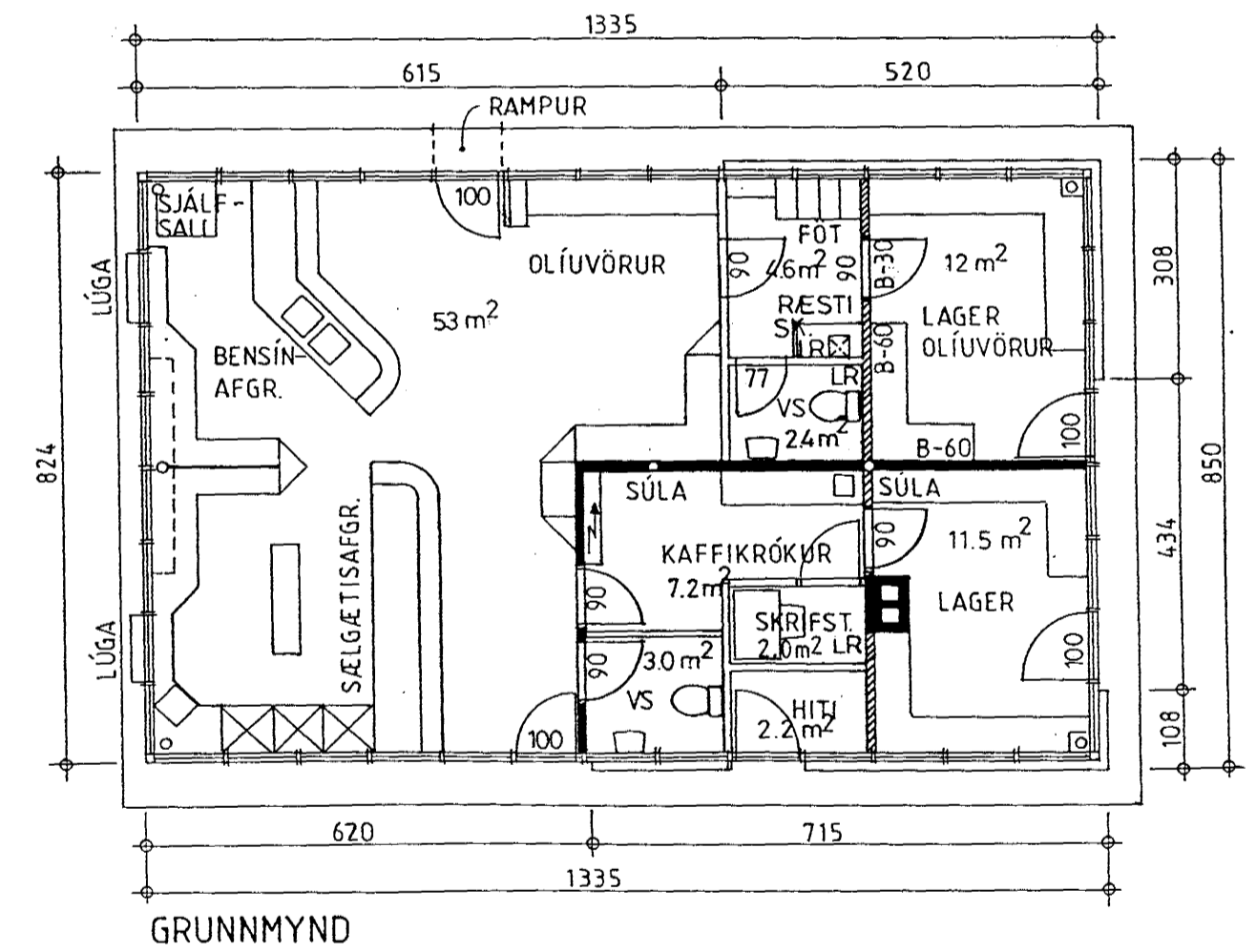
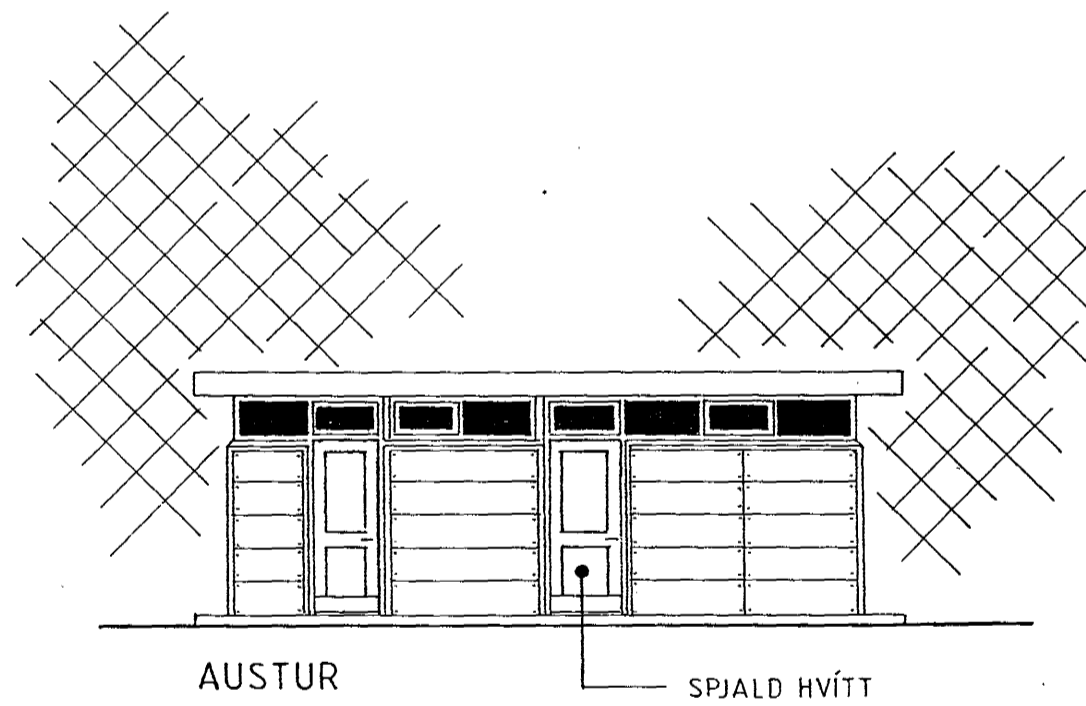
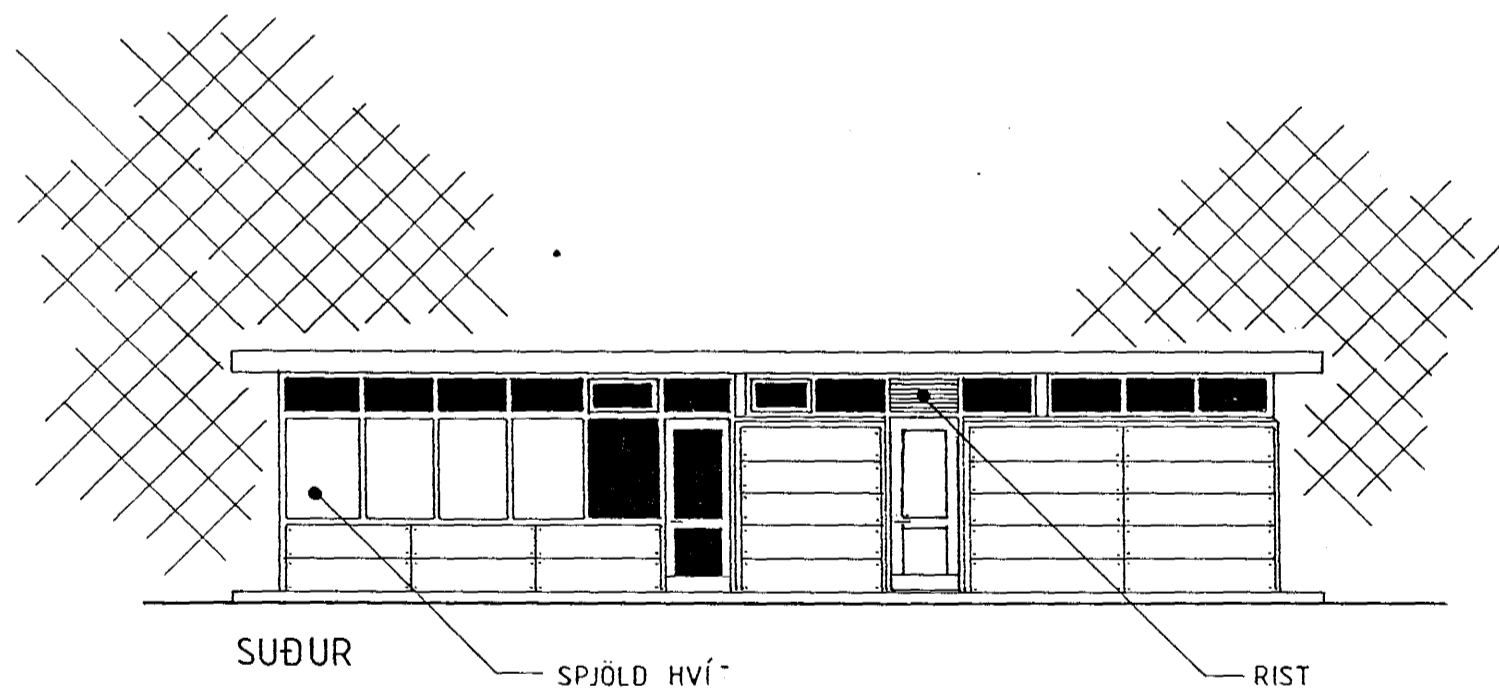
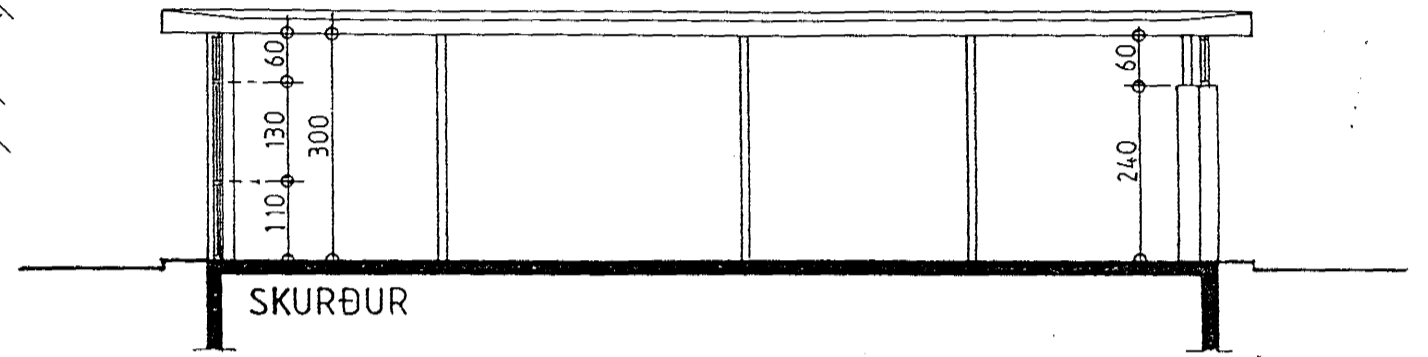
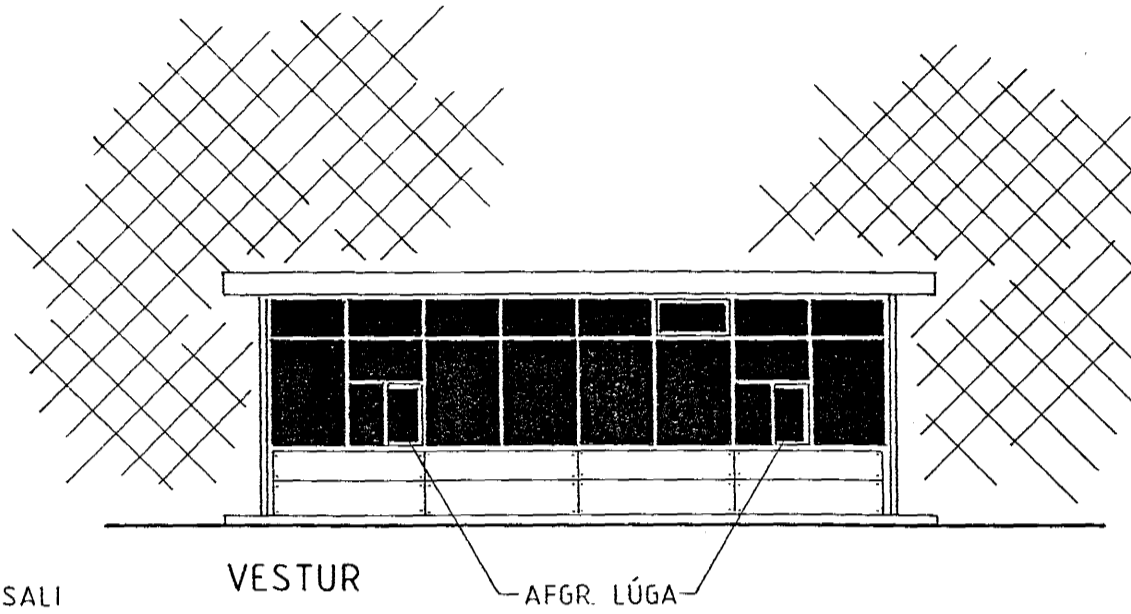
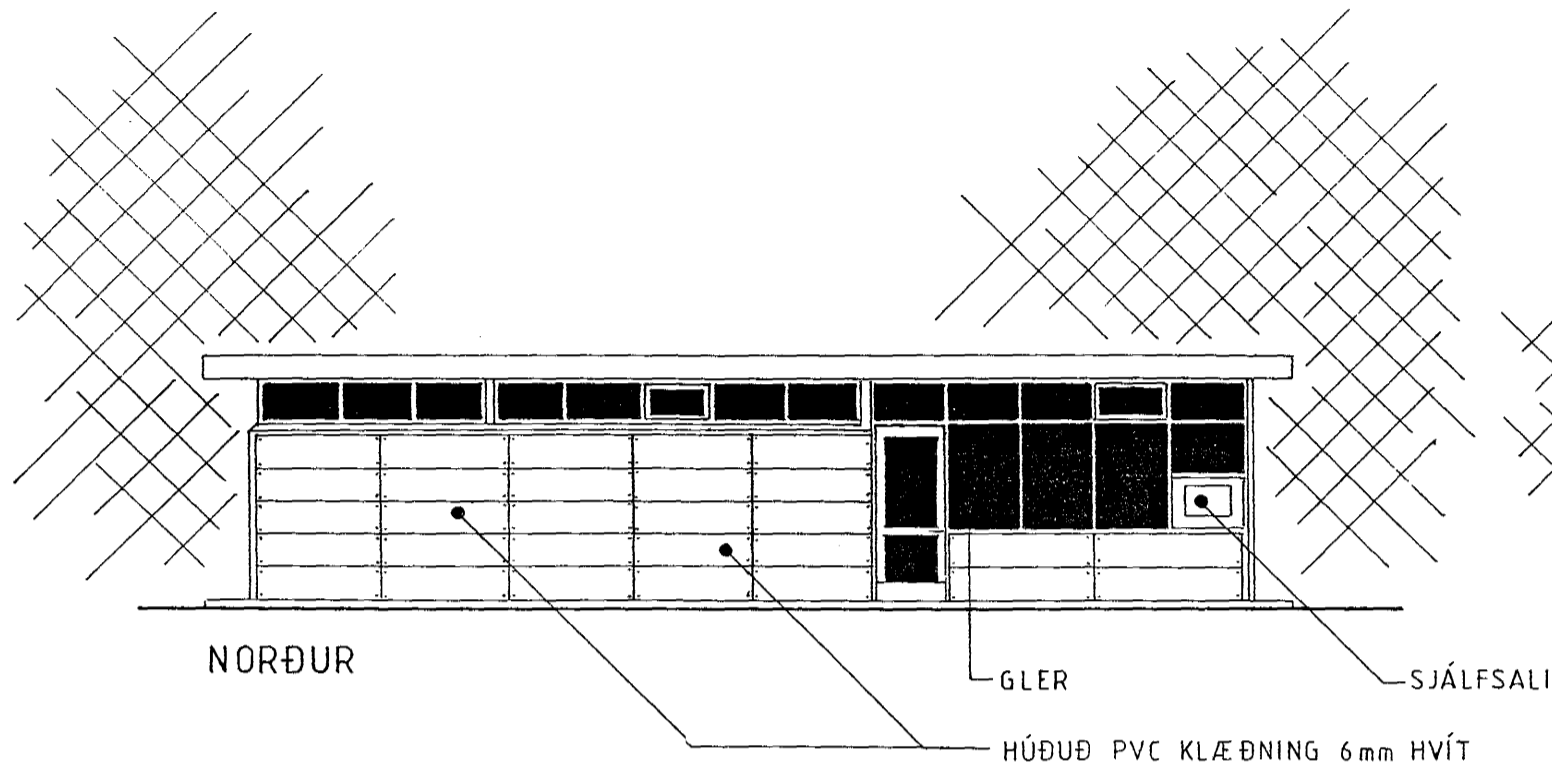


EFTIR BREYTINGU

Samþykkt þann
23 APR. 1996
Byggingafulltrúinn í Hafnarfirði
Erlendur Hjálmarsson



FLATARMÁL 111,6 m²
RÚMMÁL 368,3 m³

SLÖKKVITEKI STAÐSETT Í SAMRÁÐI VIÐ BRUNAMÁLAYFIRVÖLD

SKELJUNGUR HF REYKJAVÍKURVEGI 58 HAFNARFIRÐI
HAUKUR HARÐARSON ARKITEKT FAÍ.
TEIKNISTOFA HÁTEIGSVEGI 7.
S. 61 19 10. F. 61 19 21.

1:100
JAN. 95

Haukur Harðarson