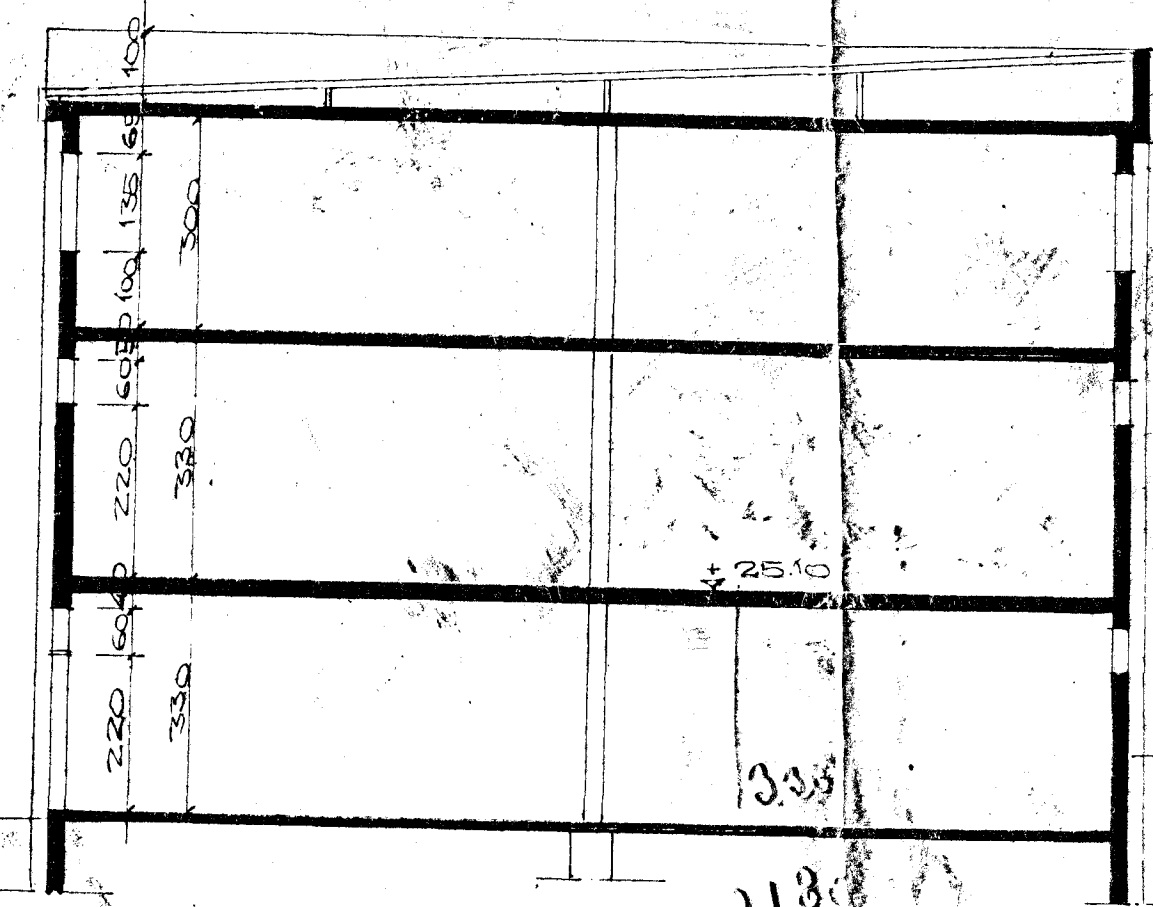


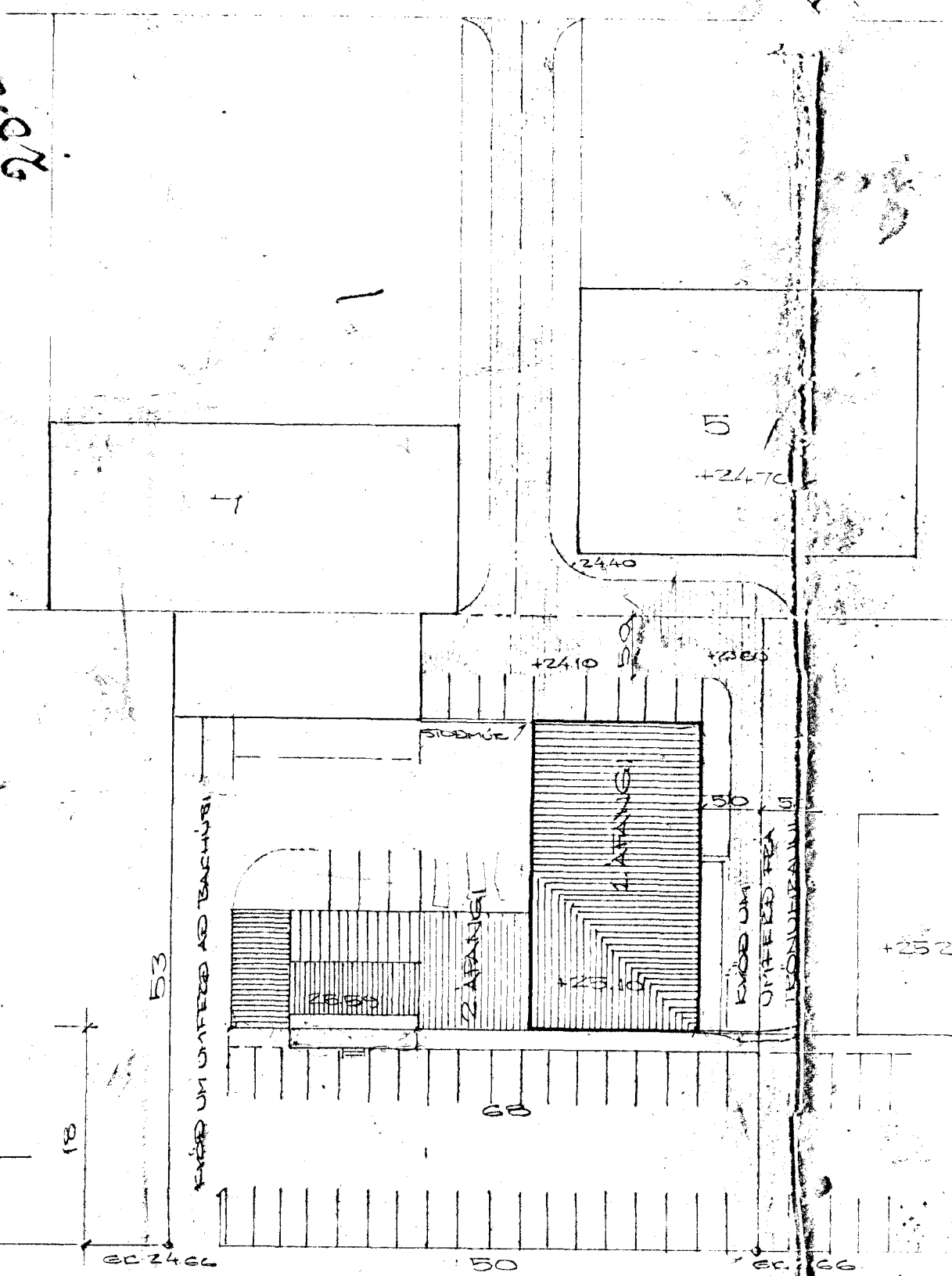
GRUNNFLÆTUE 1 AFANGI  
 SAMT 2 AFANGI  
 FLATARMÁL LÓÐAR 2650 m<sup>2</sup>  
 GRUNNFLÆTUE RÍGGINGA  
 A LÖBÐINNI: NYRVEGJÓG 481  
 FRAMMILÓÐ 160  
 TRACHJÓG 881

TEKNIÚTDRAG

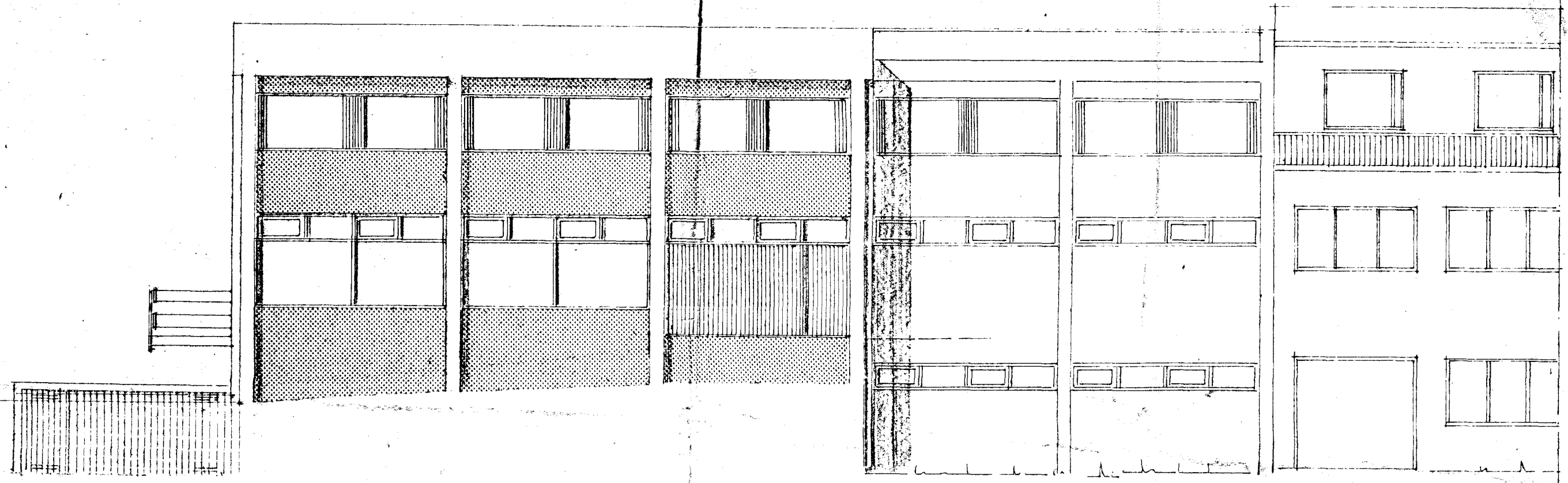
3 — — 500  
 824/ 5768 - 7 rör 100<sup>mm</sup> 1m  
 1556/ 23340 - 11 - 100<sup>mm</sup> 2m  
 1047/ 7329 - 7 greinas 100<sup>mm</sup> 45°  
 804/ 6432 - 8 leggjur 100<sup>mm</sup> 45°  
 971/ 6797 - 7 - 100<sup>mm</sup> 90°  
 284/ 1988 - 7 lak 100<sup>mm</sup>  
 51854 - hringir af þaki



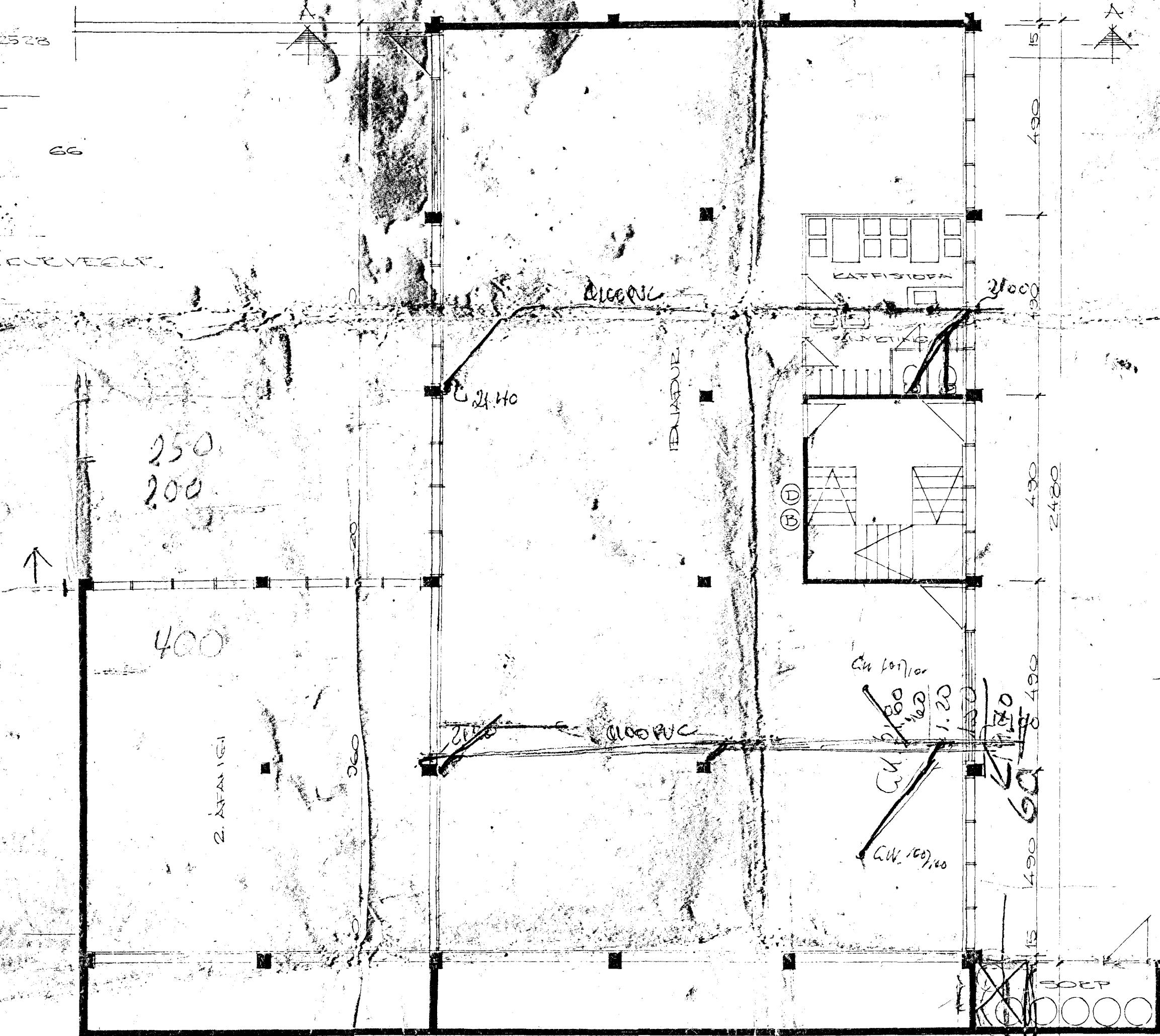
SNID A-A 1:100



AFSTÖÐUMYND 1:500



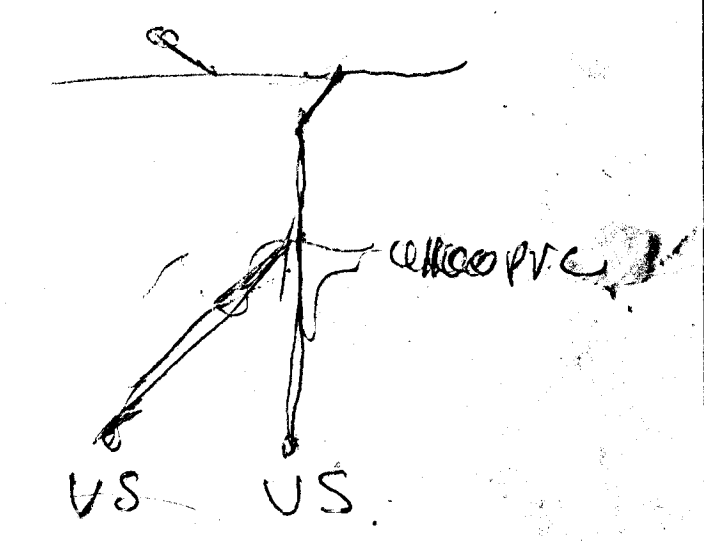
AUSTUR



GRUNNMÝLD EYJALAGA

6 rör 100  
 6 rör 200  
 4 greinas 100 45°  
 5 leggjur 100 45°  
 3 lak 100 90°

1 lak 100  
 9 rör 200  
 3 greinas 100 45°  
 3 leggjur 100 45°  
 4 - 100 90°



Stj. Skem. 5/1:72  
 85B

- Ⓛ 3/4 BRUNASLANGA A BEFLI 30M LÖNG
- Ⓜ 6 KG PURUFTTILMÍÐSLOECVITÆCI ÖPÆSTIHLAÐIÐ

1876 HÚS STYTT		REYKJAVÍCUDVEGUR 68	
11-776 HADAFÉLII		HAFNAEFJEDI	
BR.	DAGS.	BREYTING	
TÆKNIDJÓNUSTAN SF		SNID ÚTLIT EYJALAGA	
ARMULA 1 - REYKJAVÍK - SÍMI 83844		HANNAD	RVARDI 1:100 1:500
Olafur S. S. S.		TEKNAÐ 30 HFT	DAGS 4-7 76
YEIRFARID	NR.	BL.	AF 3