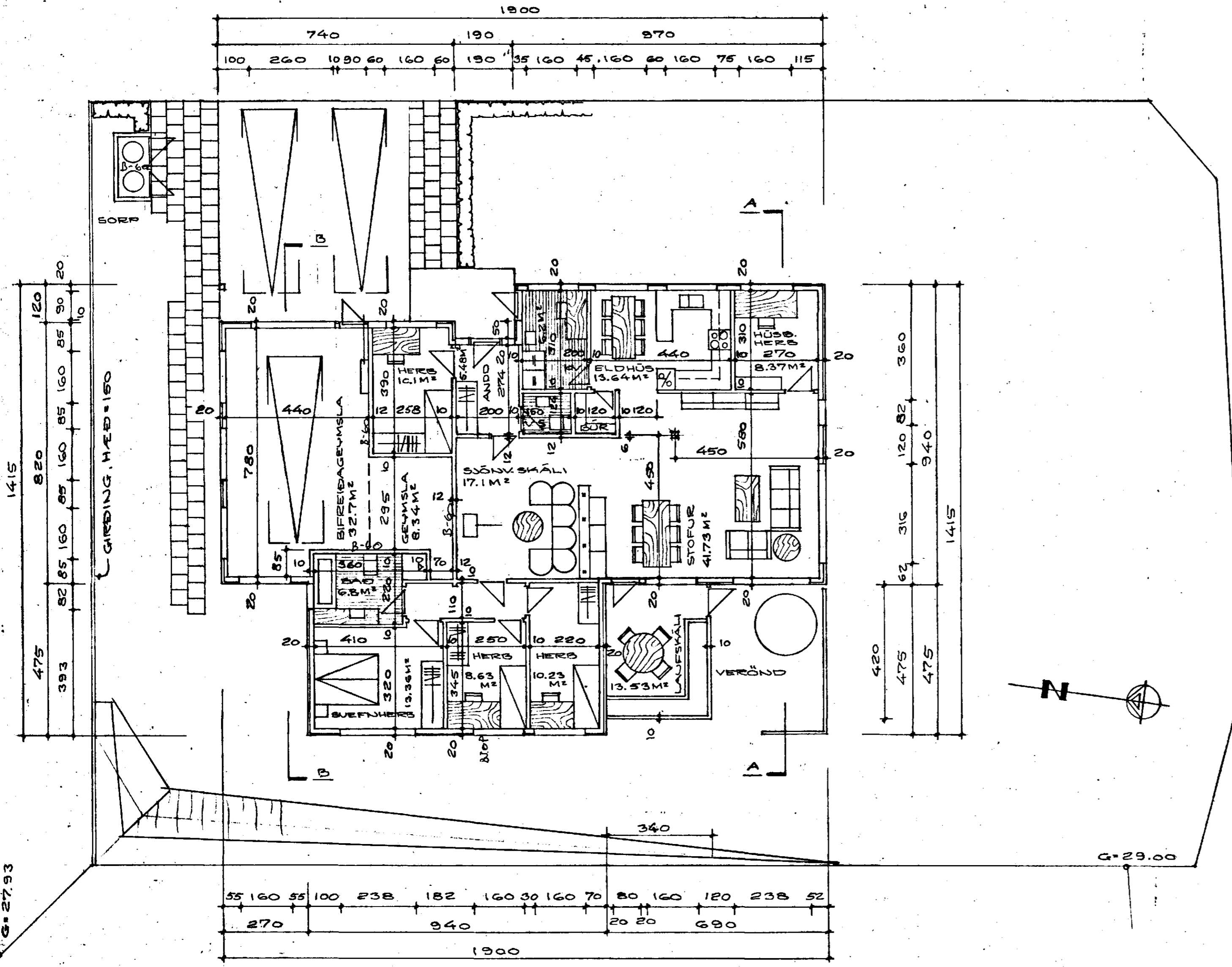


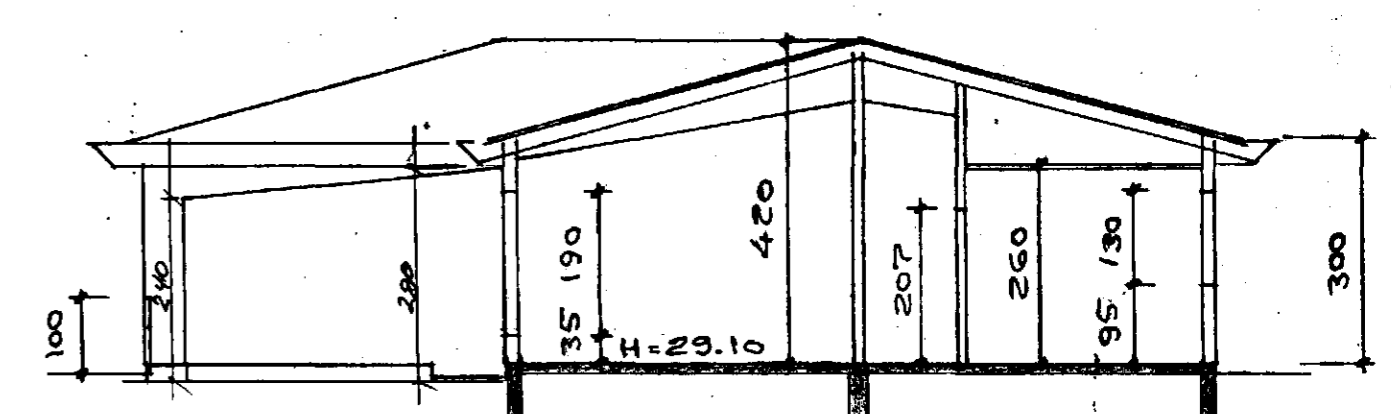
Samþykkt á fundi bygginga-  
nefndar þ. 18/6 1987  
BYGGINGAFULLTRÚINN  
Í HAFNARFIRÐI

*Staðfesting*  
Kritilld: Uppg. u. d. byggingar v. d. B-60  
Frangur hefur verið tekið mót um.  
gerður í samráði u. d. bygginga-  
nefndinni þ. 6/11/87

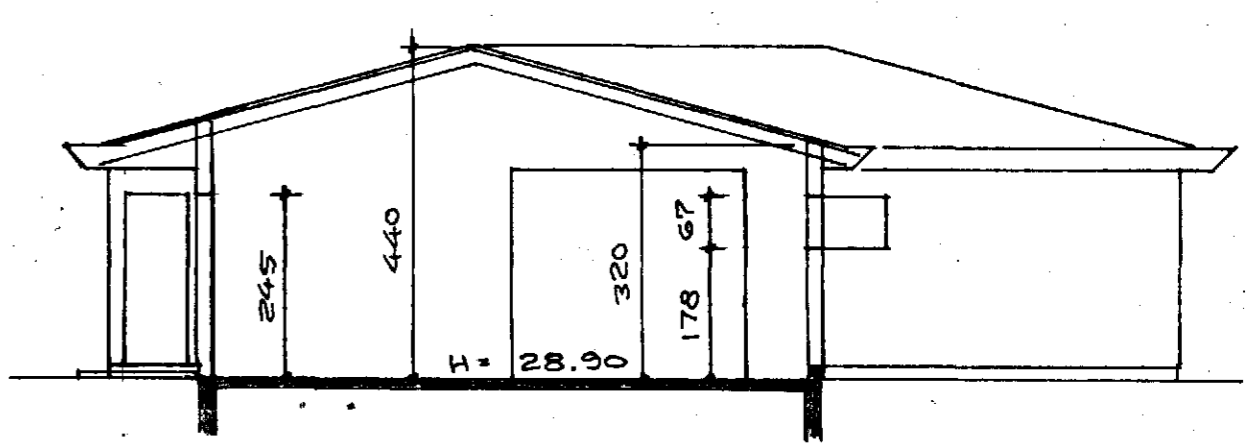


GRUNNMUND, M=1:100

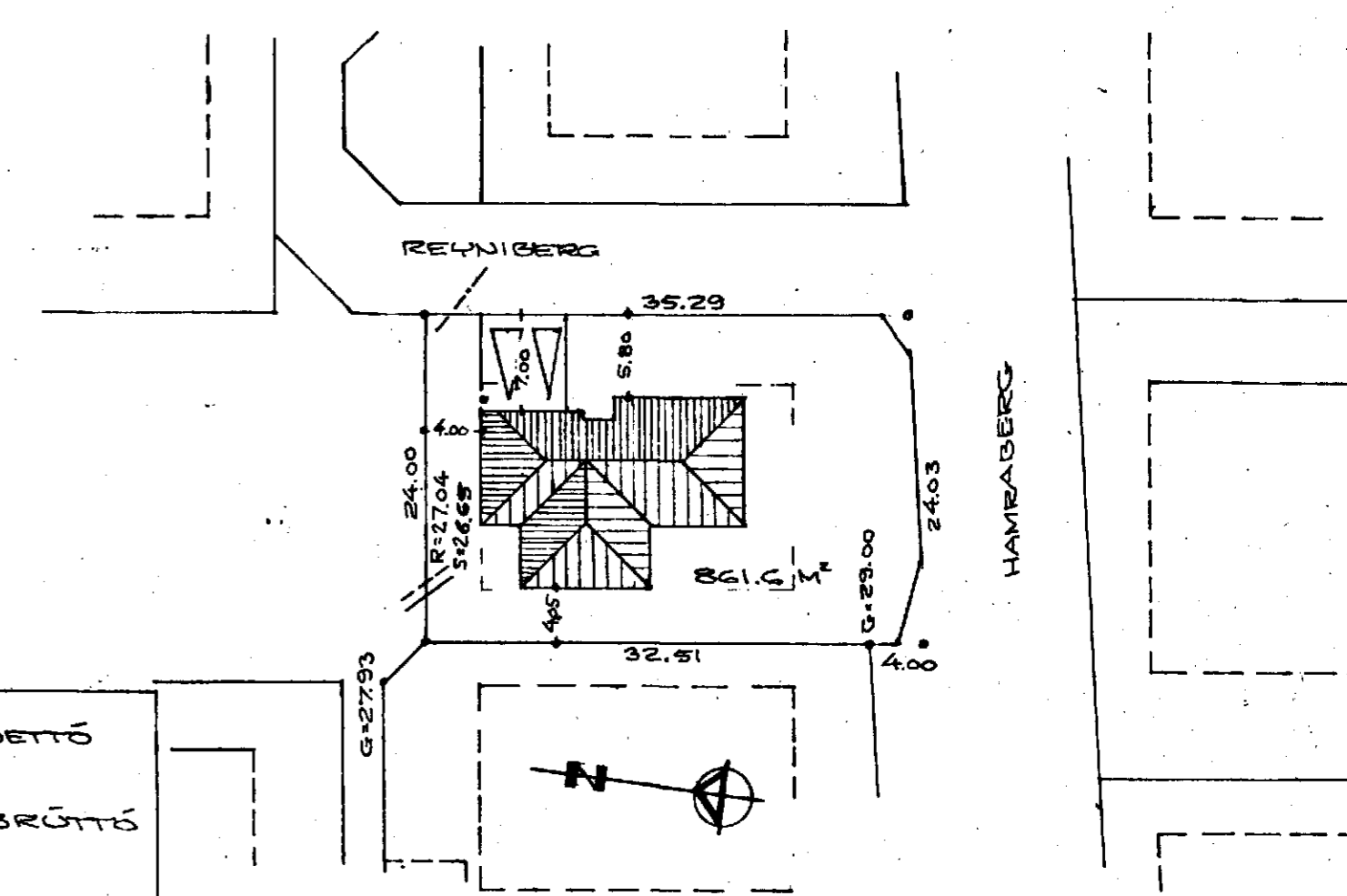
FLATARMÁL IBÚÐARHÚSS = 156.39 M<sup>2</sup> NETTÓ  
 FLATARMÁL BIFREIDARGEYMSLU OG GEYMSLU = 41.04 M<sup>2</sup> NETTÓ  
 FLATARMÁL LAUFSKÁLA = 13.53 M<sup>2</sup> NETTÓ  
 FLATARMÁL IBÚÐARHÚSS = 165.69 M<sup>2</sup> BRÜTTÓ  
 FLATARMÁL BIFREIDARGEYMSLU OG GEYMSLU = 45.44 M<sup>2</sup> BRÜTTÓ  
 FLATARMÁL LAUFSKÁLA = 14.28 M<sup>2</sup> BRÜTTÓ  
 NÝTINGARHLUTFALL =  $\frac{156.39 + 41.04}{861.6} = 0.229$   
 NÝTINGARHLUTFALL =  $\frac{165.69 + 45.44}{861.6} = 0.245$   
 NÝTINGARHLUTFALL =  $\frac{156.39 + 41.04 + 13.53}{861.6} = 0.245$   
 NÝTINGARHLUTFALL =  $\frac{165.69 + 45.44 + 14.28}{861.6} = 0.262$   
**KÖLNUÐARTÖLUR**  
 ÚTVEGGIR : K = 0.4 W/M<sup>2</sup>·°C  
 DAK : K = 0.2 W/M<sup>2</sup>·°C  
 GÖLF : K = 0.3 W/M<sup>2</sup>·°C  
 GLUGGA, KARMAR + GLER, VEGIS, MEDALTAL : K = 2.5 W/M<sup>2</sup>·°C



SKURÐUR A-A, M=1:100



SKURÐUR B-B, M=1:100



AFSTODUMUNDI M=1:1500

REYNISBERG NR. 1  
 HAFNARFIRÐI Í JÚNI 1987  
 ARNARHRAUNI 47. 651412

*Arnar Magnússon*