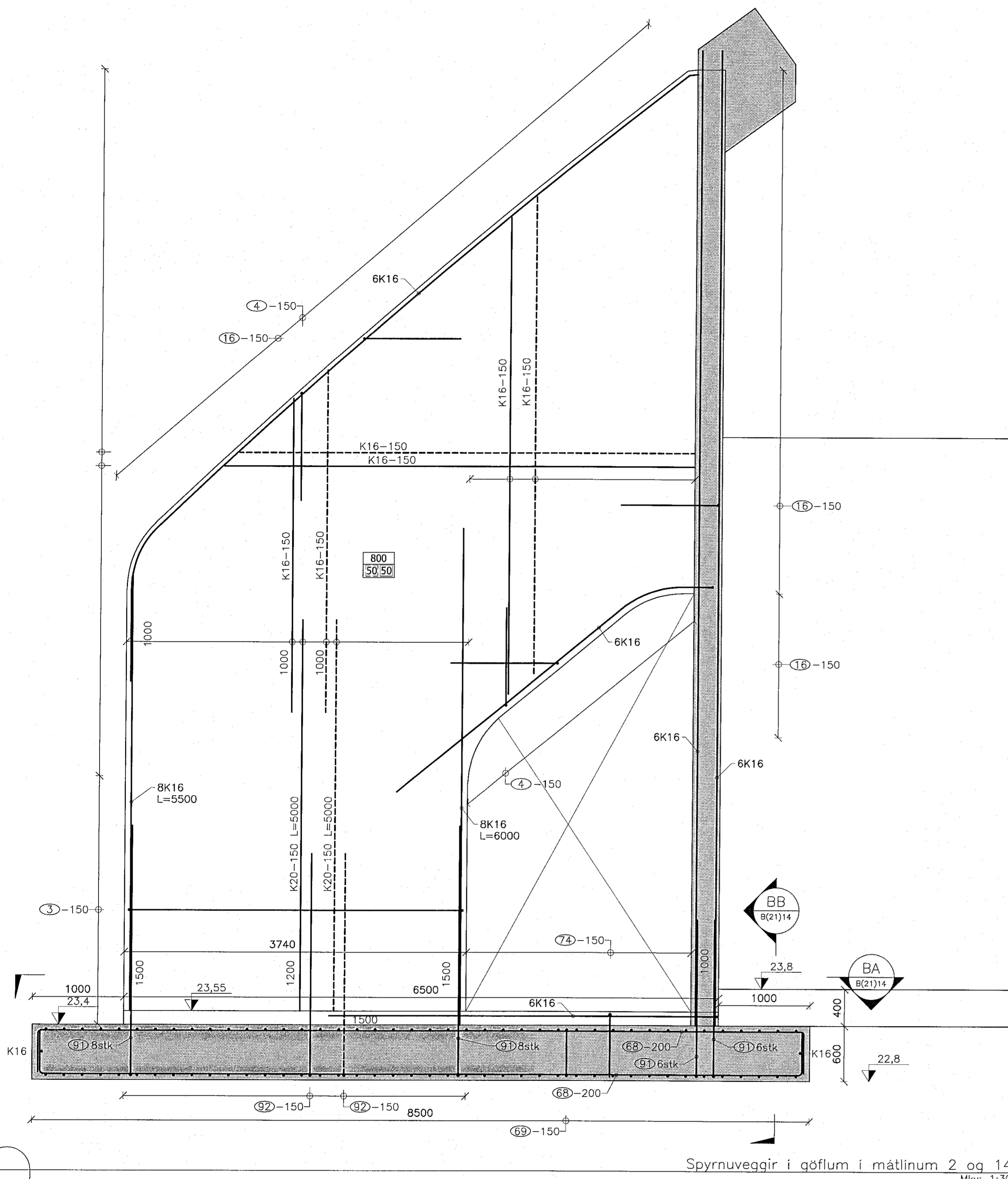
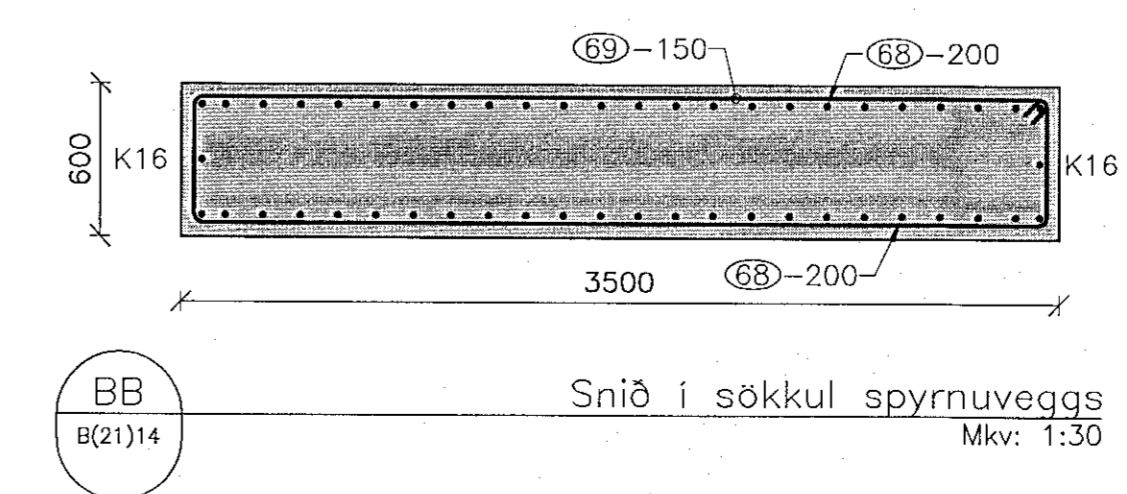
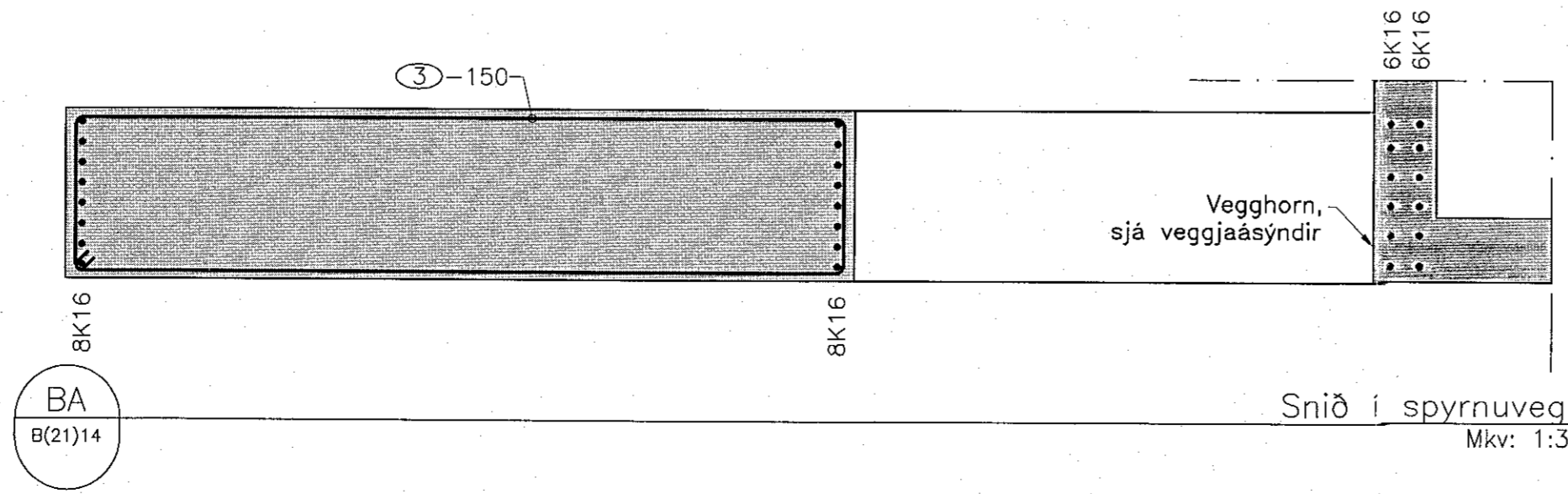
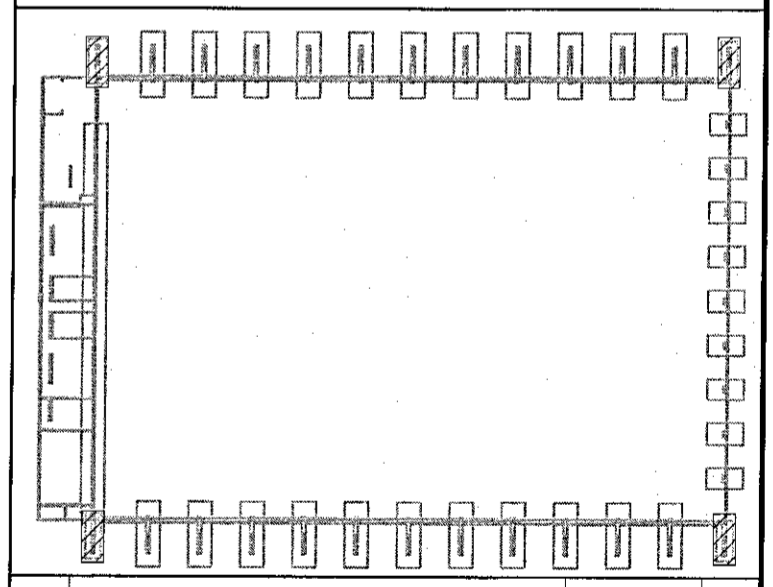


Artun hönnuðarstjóra:
 Helgi Már Hallgrímsson
 Dagsetning aðalupprita: 22.10.2022
 28. Des. 2022
 Skýringar:



3 K16-L=9000 3640	7 K16-L=Br. Br.	68 K16-L=9200 8400
4 K16-L=2940 1150	12 K20-L=1700 500	69 K16-L=8120 3400
5 K16-L=Br. Br.	13 K10-L=2170 170	74 K16-L=1940 650
6 K16-L=Br. Br.	16 K16-L=3000 1150	91 K25-L=2700 2200
		92 K20-L=2400 1900



1 Framkvæmdateikning	5.12.22	HJE
△ Breytingar:	Dags:	Hö:

OHNIT VERKFRÆÐISTOFA
 Háaleitibraut 5B-6D
 108 Reykjavík
 Sími: 570-0500
 Fax: 570-0503
 www.ohnit.is

Hannað: BMG Toknað: JPG Yfiranf: HJE
 Tölvuskýr: B(21)14 SPYRNUVEGGUR Í MÁTLÍNUM 2 OG 14.DWG
 Kl.: 131167-5479 Dags: 5.12.2022
 Sampykkt: Haukur Silur

Knatthús Hauka

Burðarþol
 Spyrnuveggur í málínum 2 og 14

Verk nr.: 21237 Framst. bláa: A1 Tekn. nr.: Útg.:
 Mkv.: 1:30 **B(21)14 1**