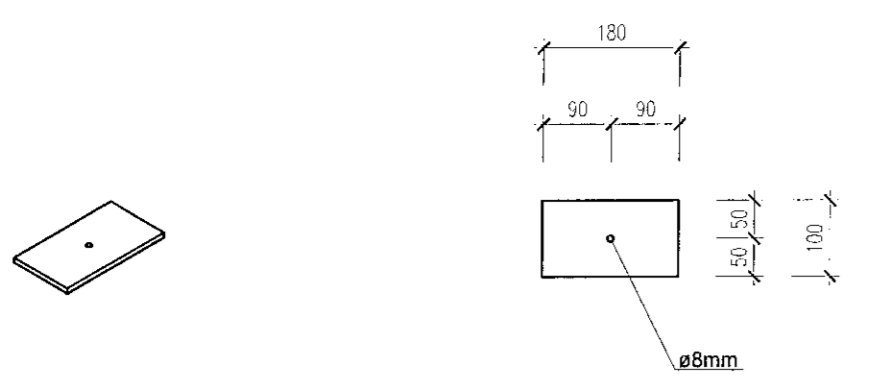
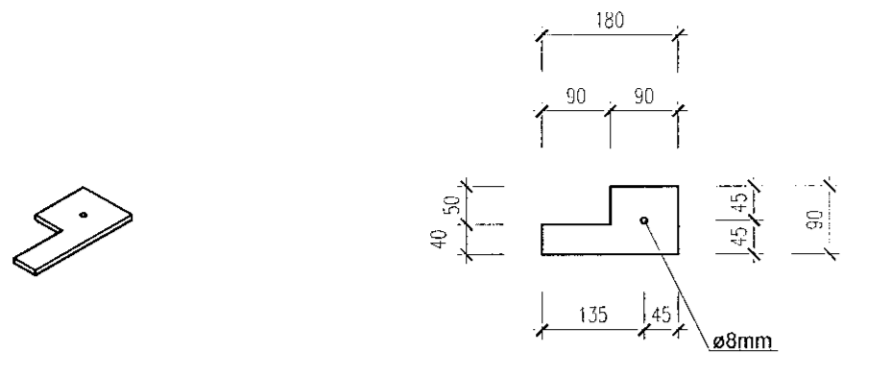


Pos.	Name	Material	Psc.	Height [mm]	Width [mm]	Length [mm]
101	Steelplate	S235 JR	4	8	100	180
102	Steelplate	S235 JR	1	8	90	180
103	Steelplate	S235 JR	4	6	60	120
104	Steelplate	S235 JR	3	6	100	190
105	Steelplate	S235 JR	1	6	220	220
106	RHS 50x50x5	S235 JR	2			2138
107	IPE 200	S235 JR	1			2498
108	IPE 200	S235 JR	1			3034
Total Pcs.			17			

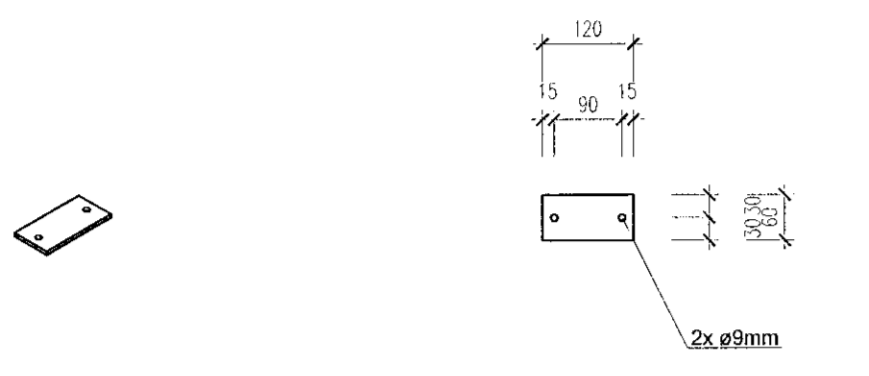
Pos. 101  
4 Pieces



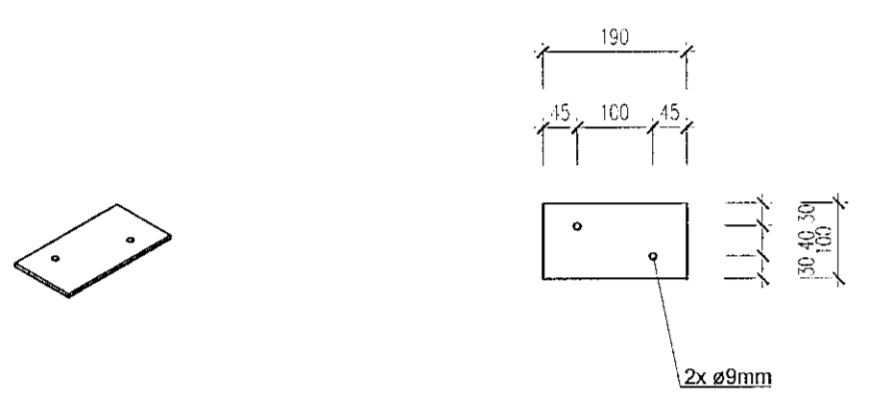
Pos. 102  
1 Piece



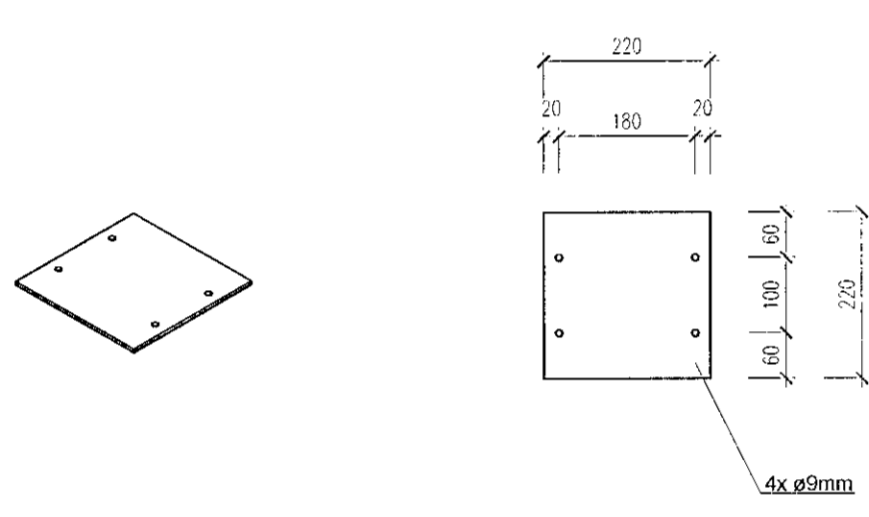
Pos. 103  
4 Pieces



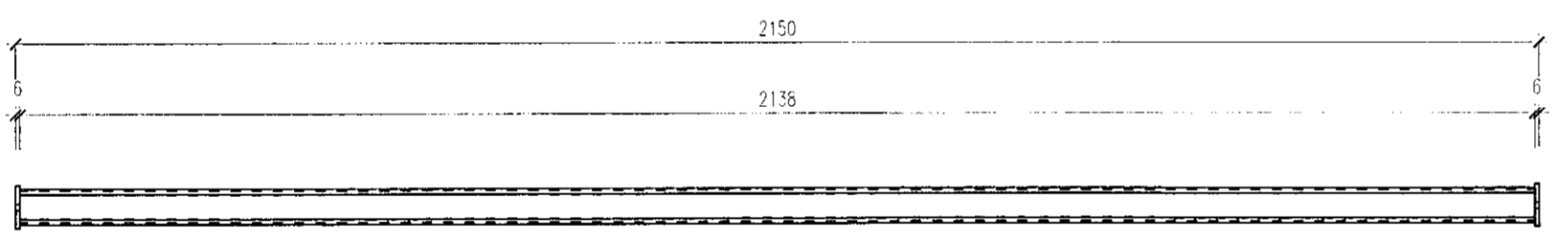
Pos. 104  
3 Pieces



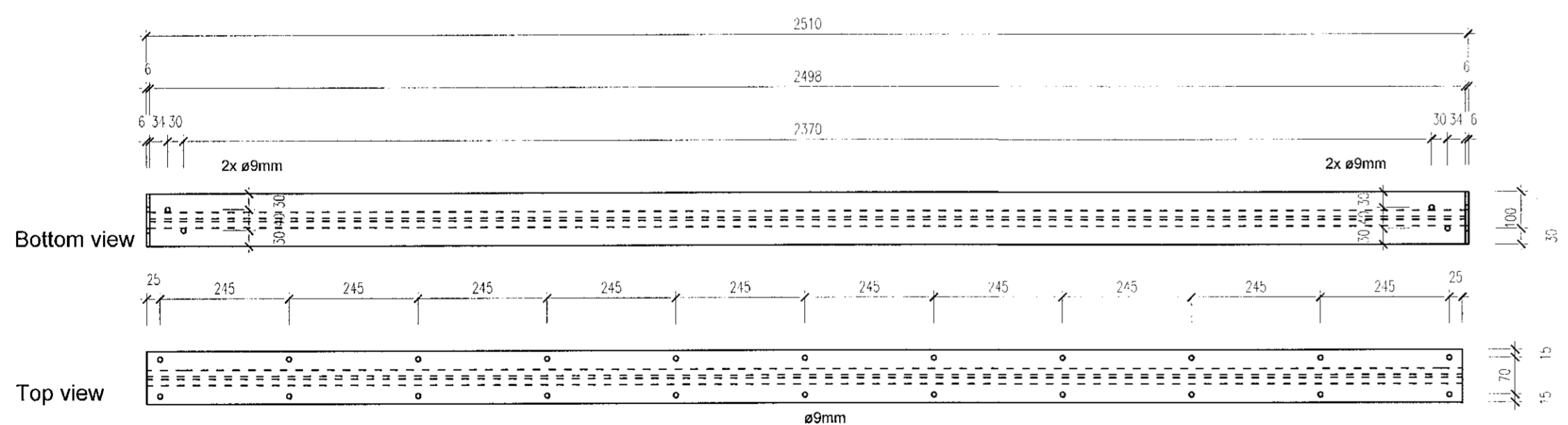
Pos. 105  
1 Piece



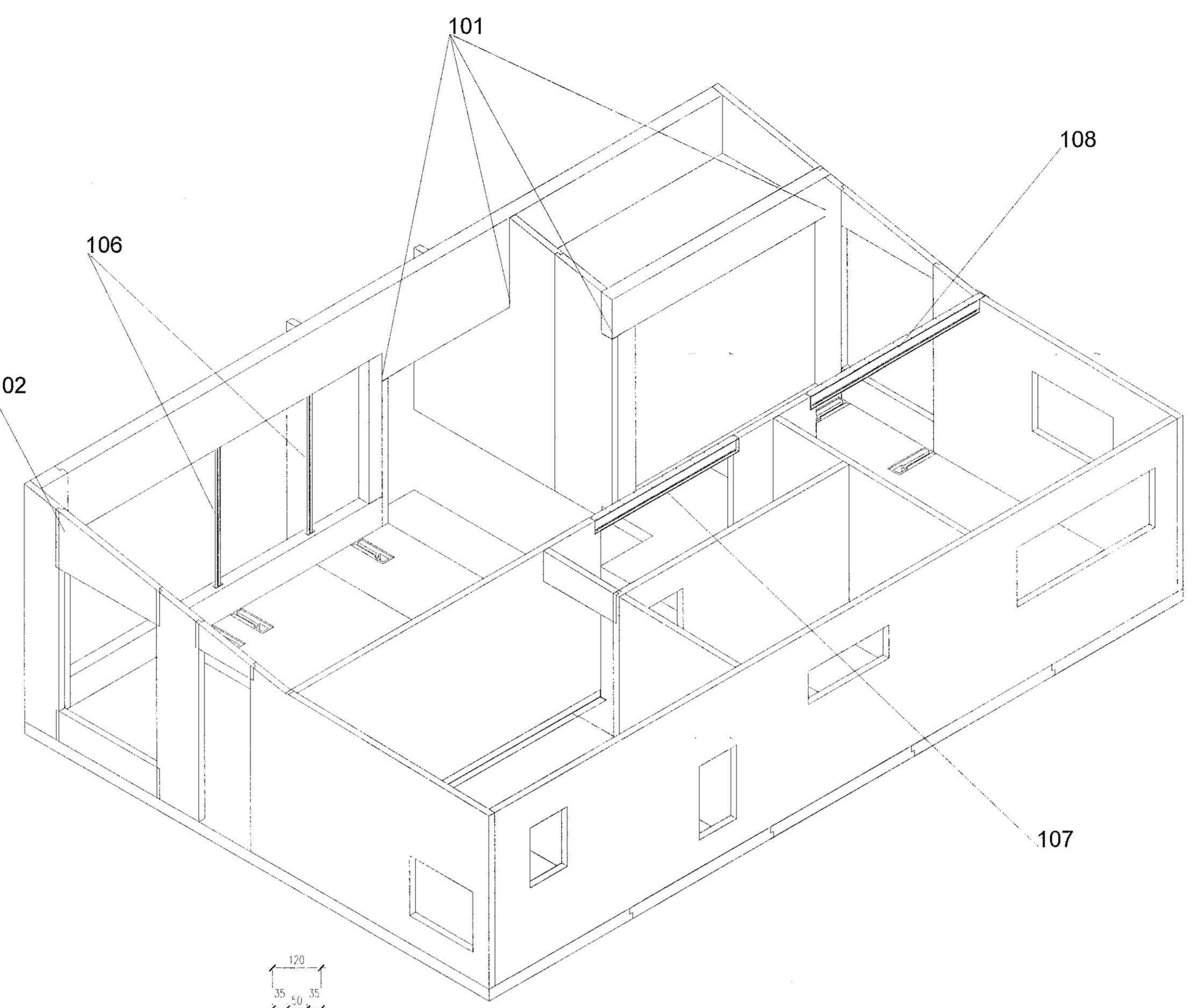
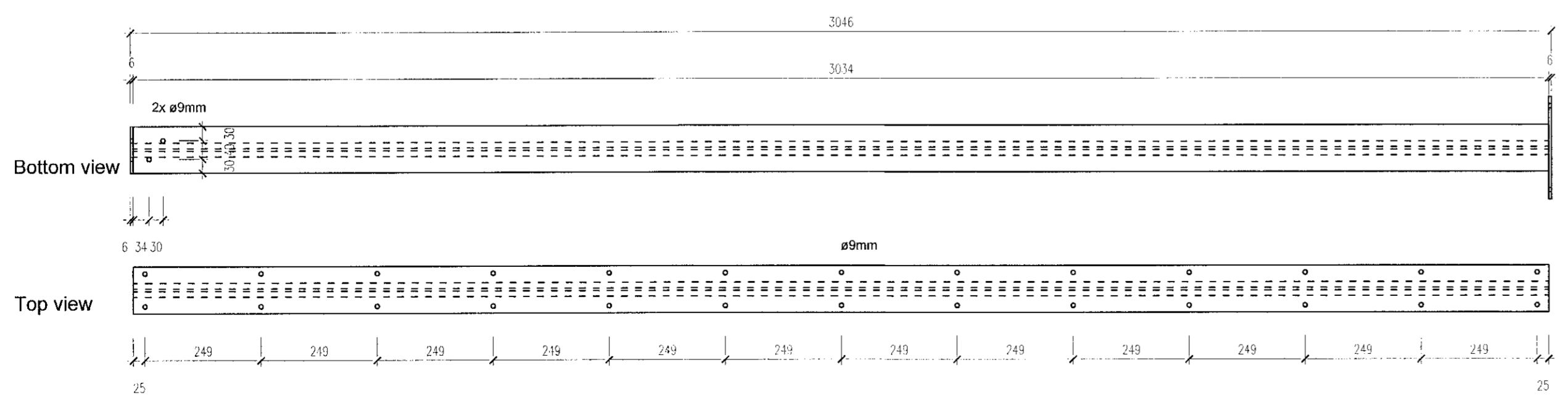
Pos. 106  
2 Pieces



Pos. 107  
1 Piece

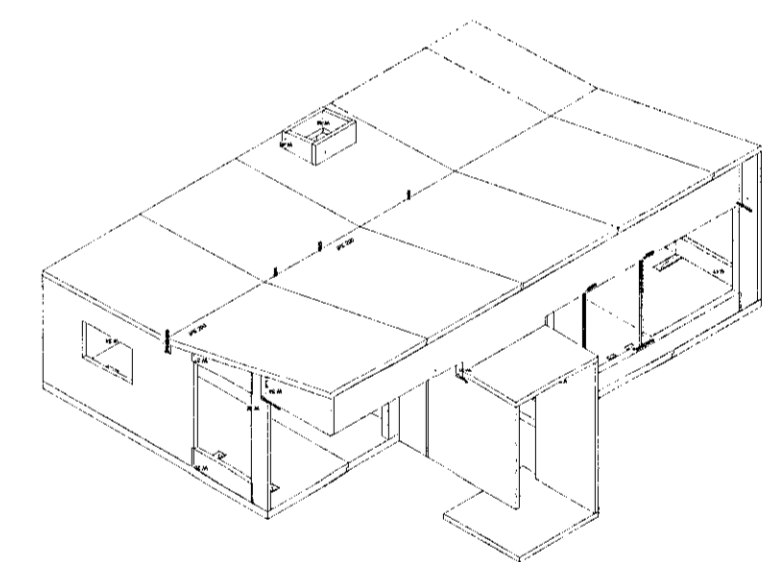


Pos. 108  
1 Piece

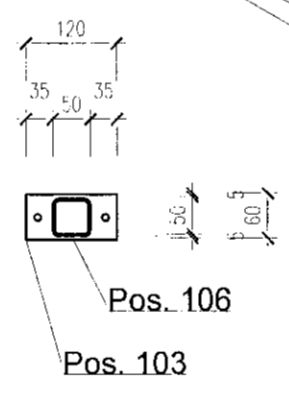


**Stálvirki**  
Allt efni og vinna skal vera í samræmi við ÍST og EN Staöla  
Allt stál í stálvirki, festingum og stífum skal vera S235JR eða betra skv. ÍST EN 10025.  
Suðuefni skal vera samsvarandi af gæðum  
Boltar, rær og skinnur skulu vera af styrkleikaflokki 8.8 og heitizinkhúðuð  
Öll mál á teikningum eru nafnmál gefin í mm. Við smíði skal taka tillit til þölvika, suðugapa o.s.frv.  
Ef ekki er annars getið á teikningum skal lágmarks stærð (a) kverksuðu vera stærra gildið af; a=4mm, a=hálf þykkt sodins  
Þversniðs mídað við að soði sé beggja vegna. Allar stúfsuður skulu hafa fulla gegnumbræðslu.  
Suðumenn skulu hafa hæfnisvottorð skv. ÍST EN ISO 9606-1:2017  
Suður skulu uppfylla gæðaflokk C skv. ÍST EN ISO 5817:2014

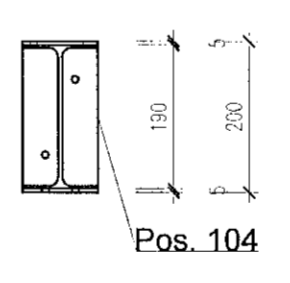
**General information:**  
Structural system made of cross laminated timber from KLH Massivholz GmbH.  
KLH elements are made according to ETA-06/0138 Timber is spruce, strength class C24 according to EN 338  
Details of joints: see drawings B 110 - B112



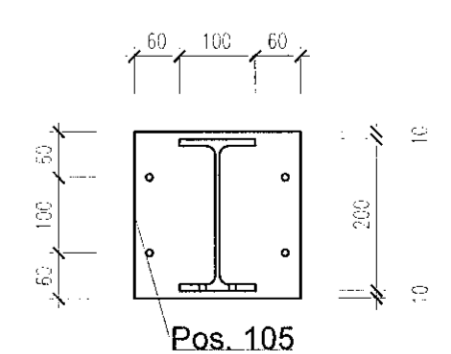
Assemble 106 + 2x 103



Assemble 107 + 2x 104



Assemble 108 + 104 + 105



ÚTGÁFA	SKÝRING	DAGS.	HANN.	YFIRF.	SAMP.
DAGS. UNDRISKRIFTAR	NAFN OG KENNITALA HÖNNUÐAR	Ingvar Ráfn Gunnarsson, kt. 050179-5919			
25/8/21	Jóna Rún Gunnarson	IR			
DAGS. UNDRISKRIFTAR	NAFN OG KENNITALA HÖNNUNARSTJÓRA	Jóhann Sigurðsson JS			
26.08.21	06.030874-3239 - arkitektar fat	E-Signatur: 030874-3239			
		Element ehf. Bankastræð 10 101 Reykjavík Tel. +354 519 6161 E-Mail: element@element.is			
HEITI VERKS					
<b>Brúsastaðir 2</b> <b>220 Hafnarfirði</b>					
HEITI TEIKNINGAR					
<b>Steelparts</b>					
VERNGJEMUR	20-33	DAGS.	21-08-23	NR. TEIKNINGAR	B106