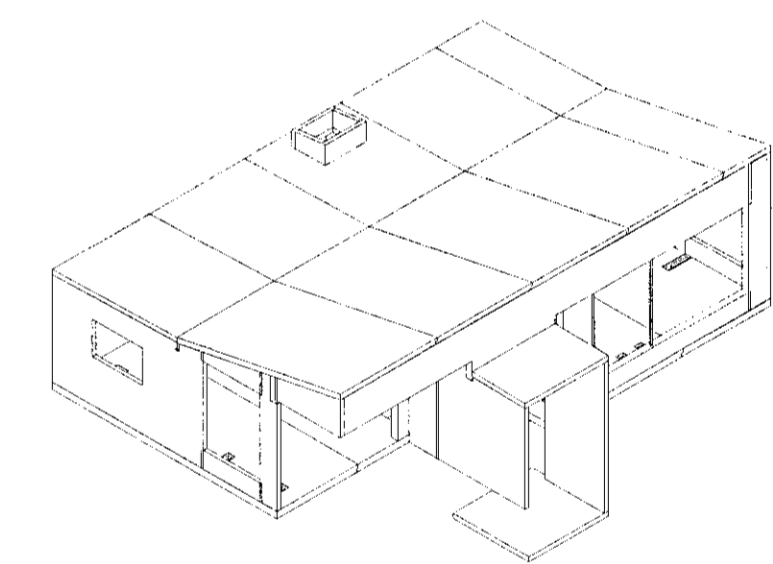


General information:
 Structural system made of cross laminated timber from KLH Massivholz GmbH. KLH elements are made according to ETA-06/0138 Timber is spruce, strength class C24 according to EN 338
 Details of joints: see drawings B 110 - B112



ÚTGÁFA SKÝRING		DAGS.	HANN.	YFIRF.	SAMP.
DAGS. UNDRSKRIFTAR	NAFN OG KENNITALA HÖNDLADAR	Ingvar Rafn Gunnarsson, kt. 050179-5919			
7.5.18.21	Ingvar Rafn Gunnarsson IPG	kt. 050179-5919			
DAGS. UNDRSKRIFTAR	NAFN OG KENNITALA HÖNDLADAR	Jóhann Sigurðsson SS, skrifstofa Stjórnvalda, kt. 030874-3239 - arkitektar fat			
26.08.21	Jóhann Sigurðsson SS	skrifstofa Stjórnvalda, kt. 030874-3239 - arkitektar fat			
 Element ehf. Bankastræði 10 101 Reykjavík Tlf. +354 510 6161 E-Mail: element@element.is					
HETTI VERKS <h3>Brúsastaðir 2</h3> <h3>220 Hafnarfirði</h3>					
HETTI TEKNINGAR <h3>CLT burðarvirki</h3> <h3>Isometric mynd</h3>					
VERNNÚMÉR	DAGS.	NR. TEKNINGAR		BLAÐSTYRIR: DN. A1	
20-33	21-08-20	B105			