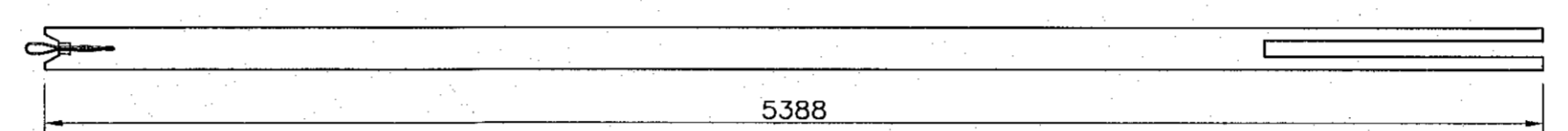
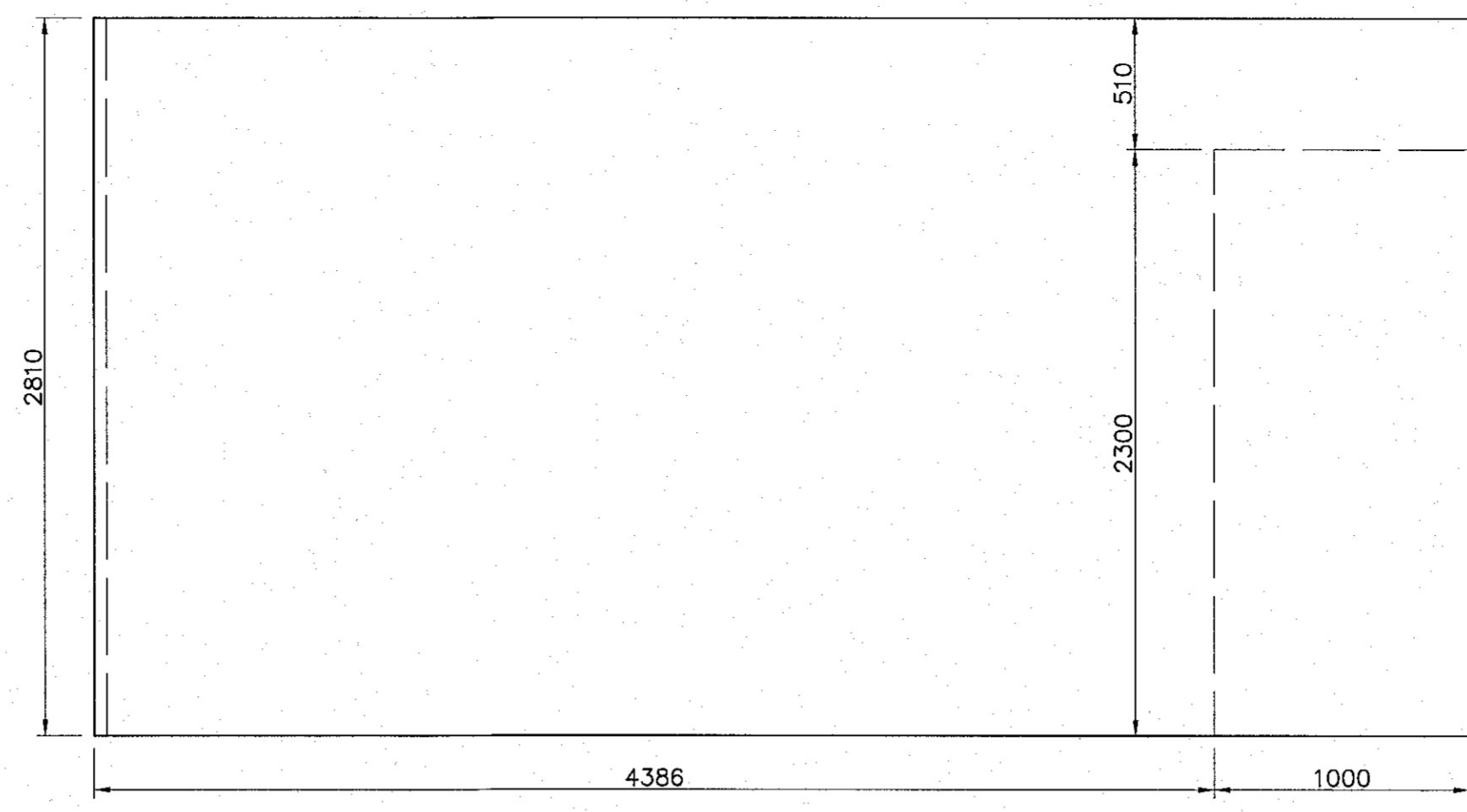
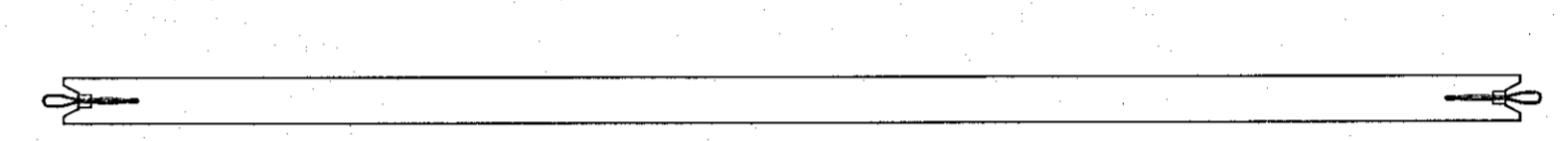
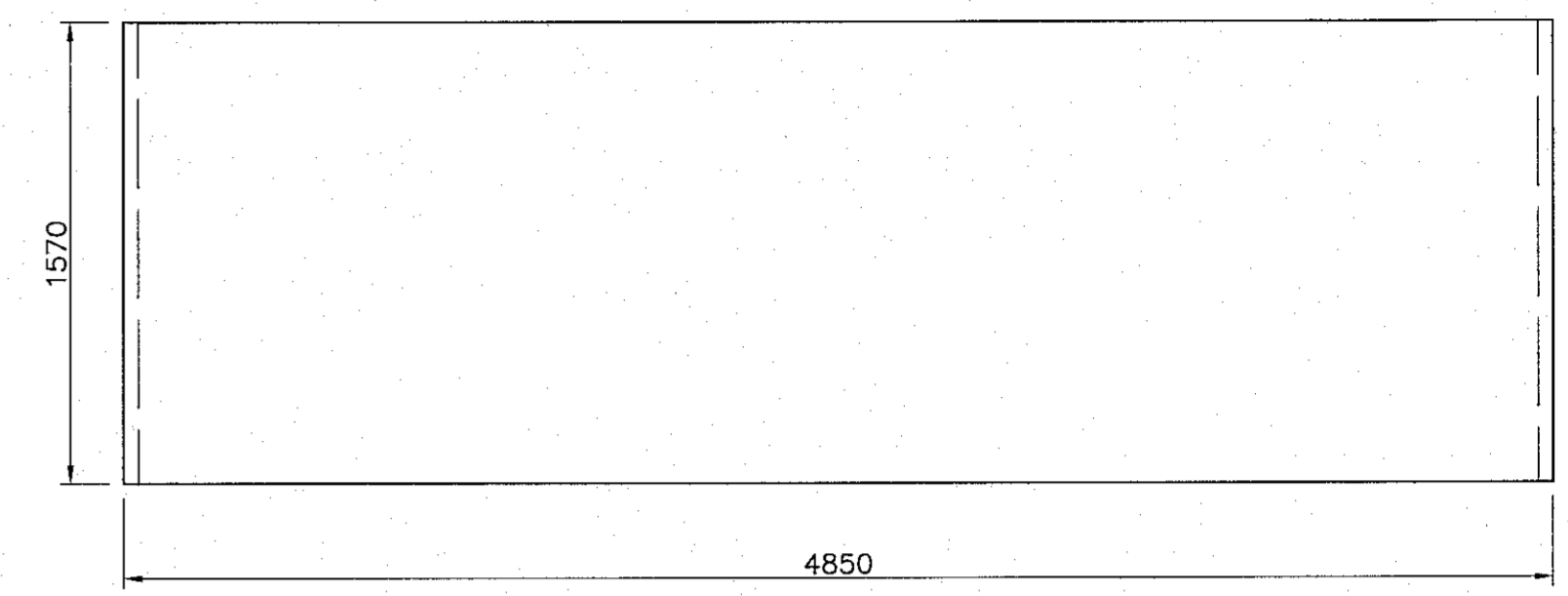


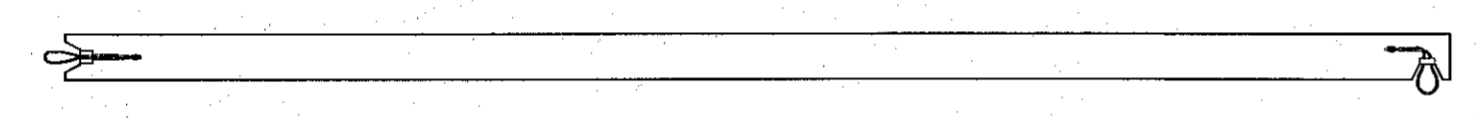
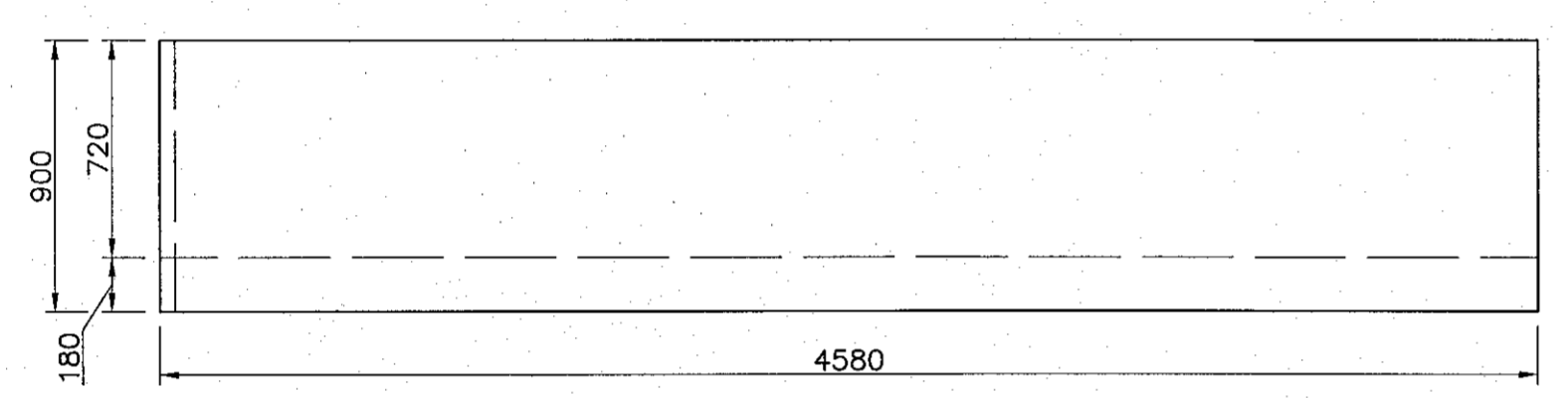
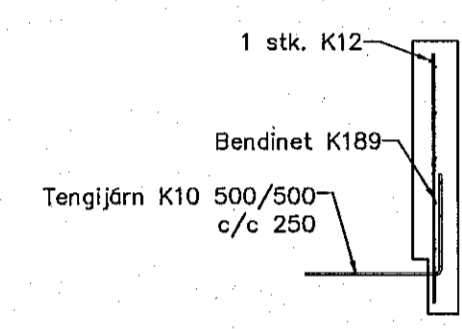
IV-101



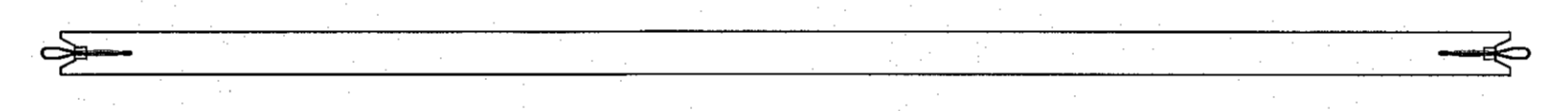
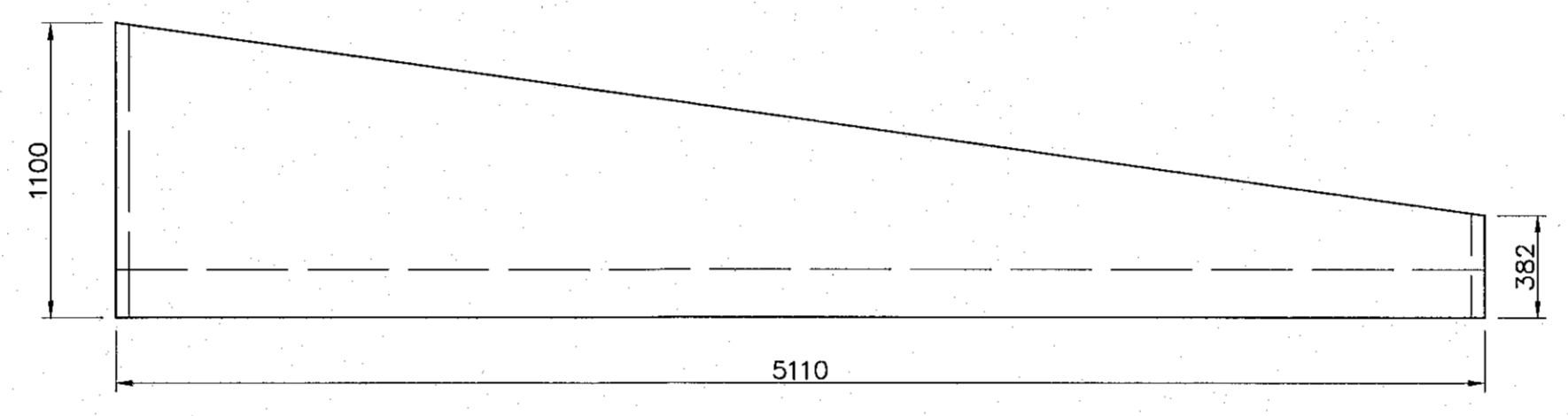
IV-102



IV-202



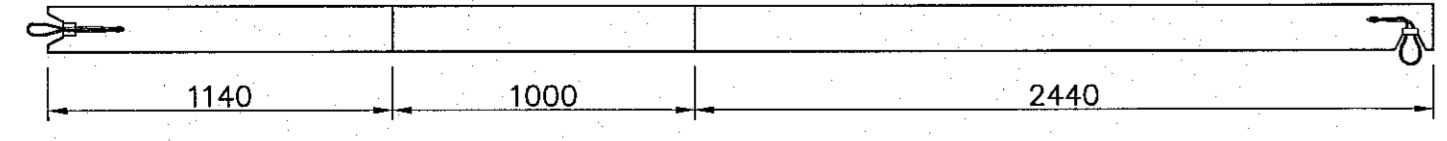
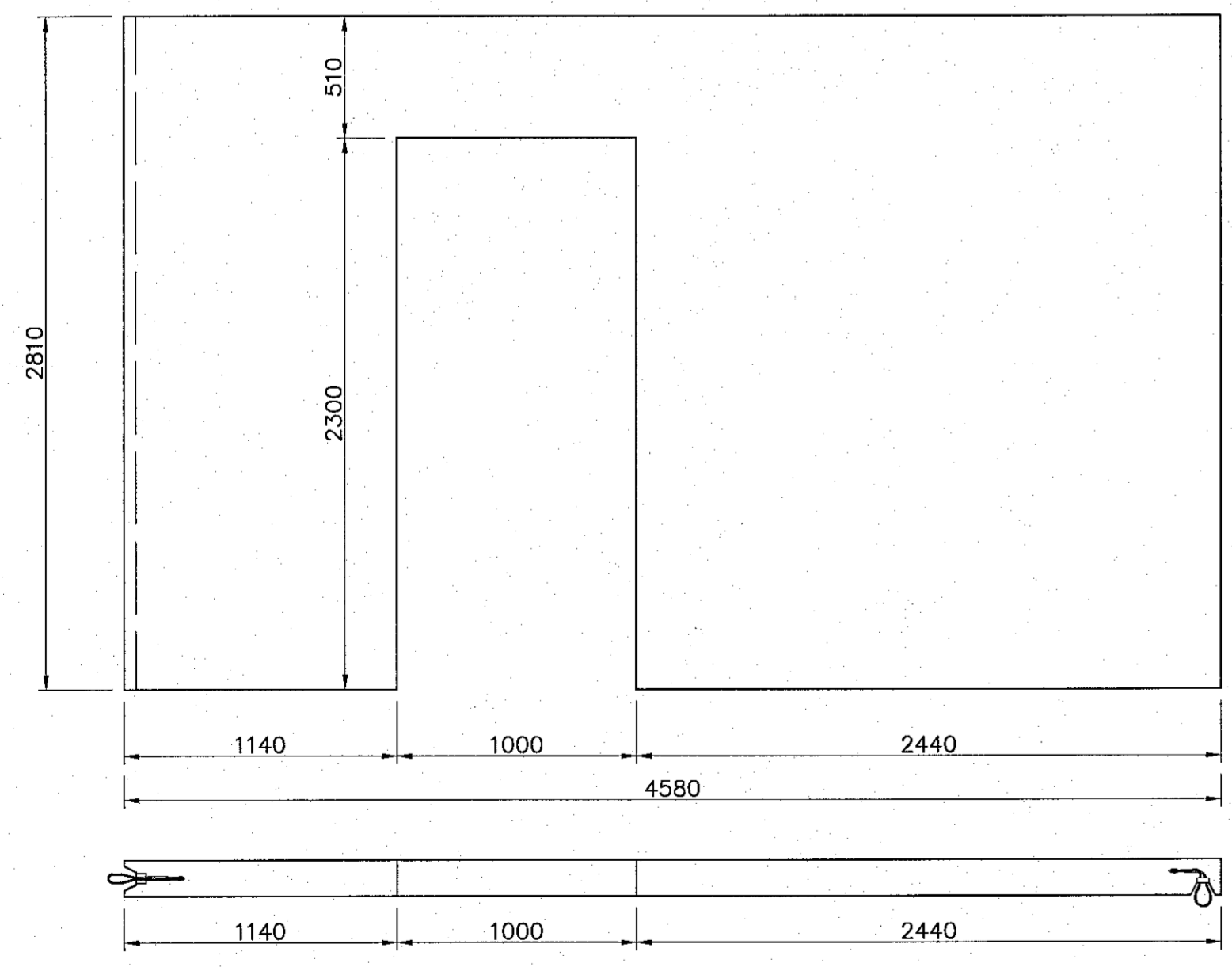
IV-203



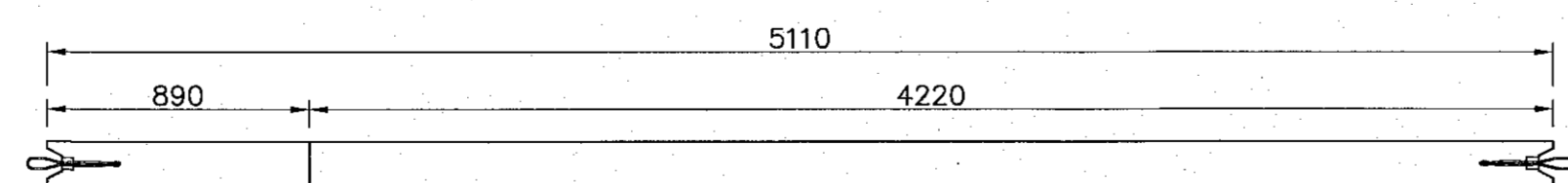
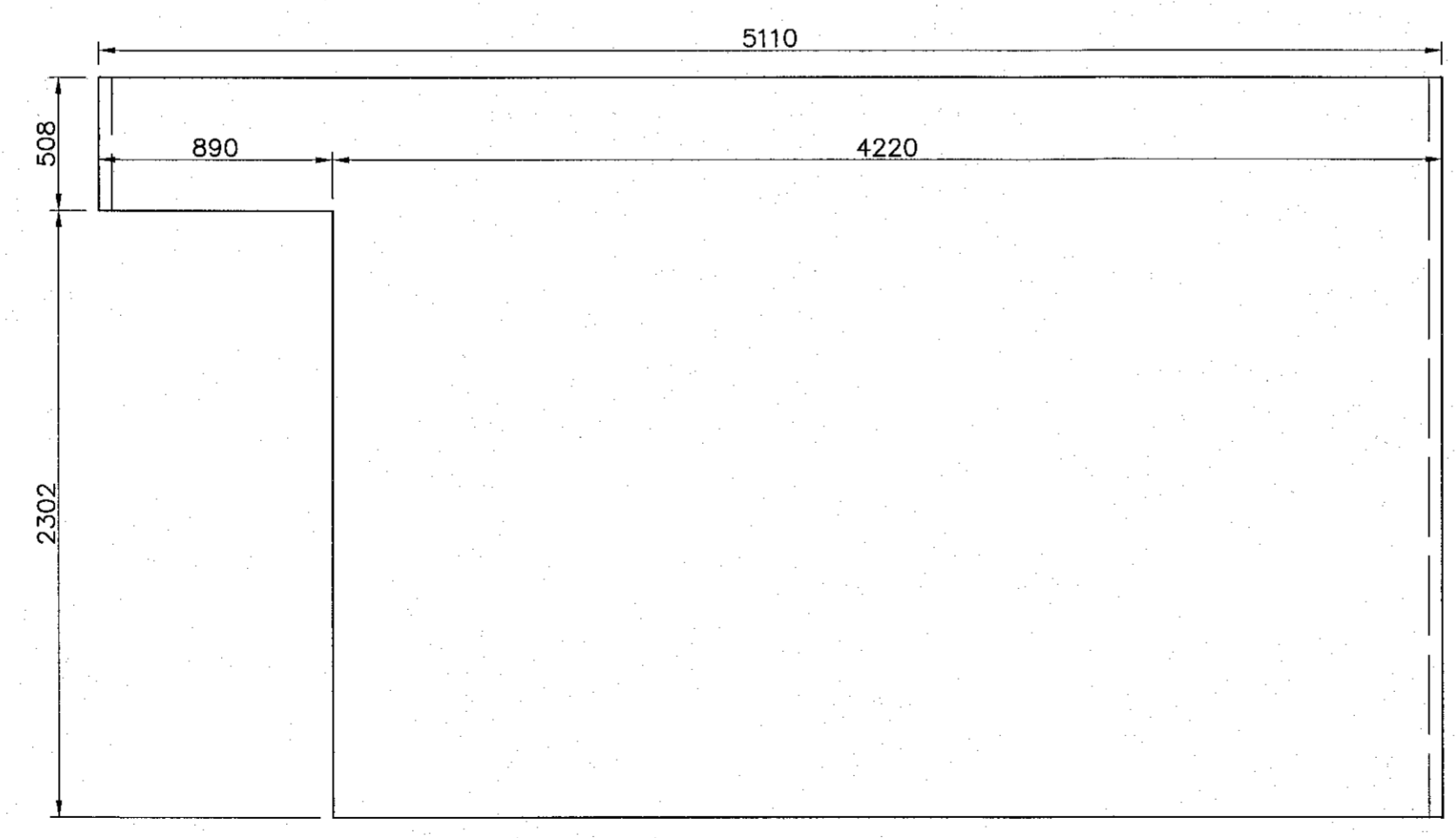
IV-204

Skýringar

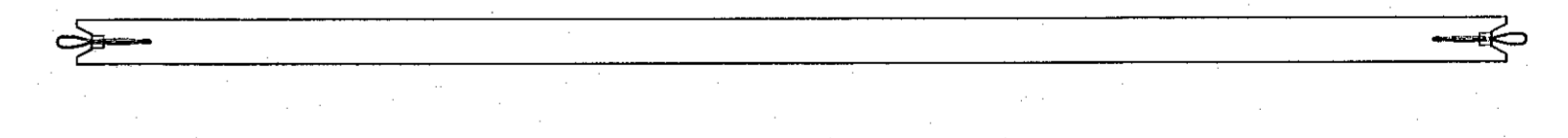
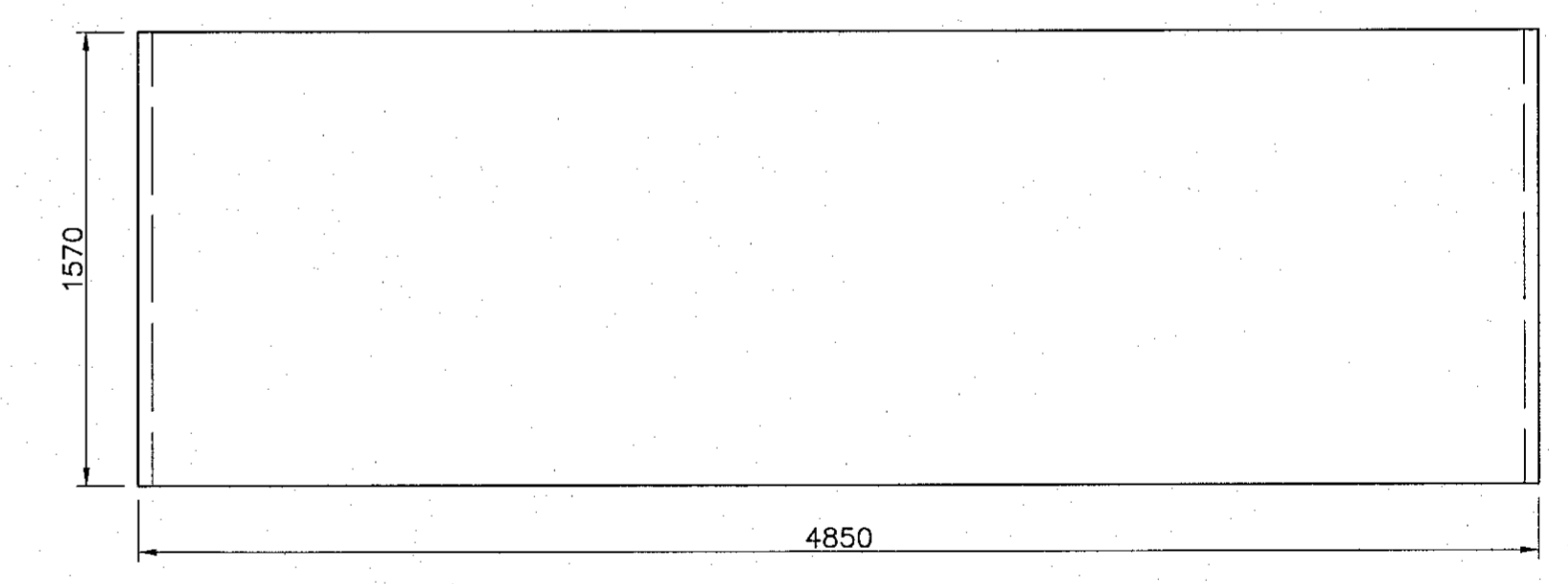
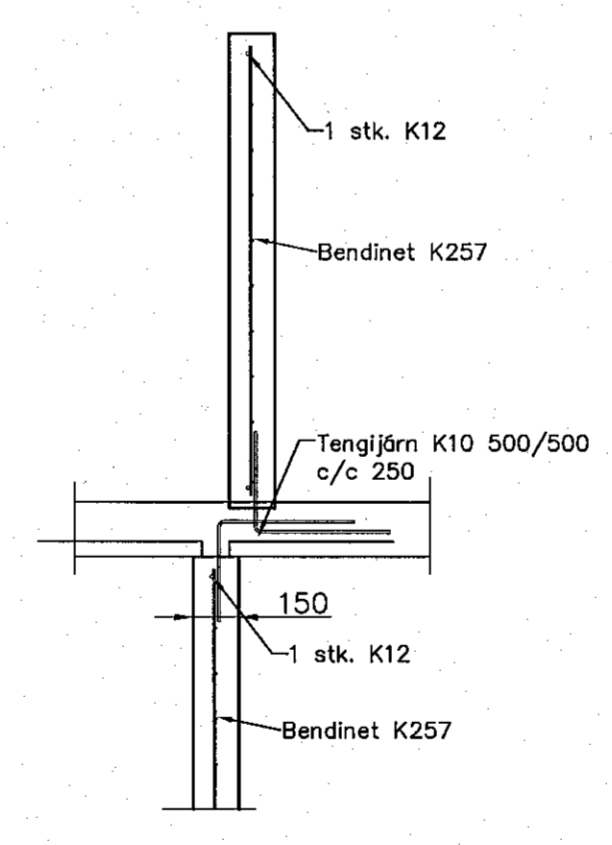
Bending í veðurkápu skal vera K189
Bending í burðareiningu skal vera K257
Í útbránum og í kringum op í veðurkápu skal vera 1 stk. K10.
Í útbránum á burðareiningu skal vera 2 stk. K10.
Umhverfis öll op í burðareiningu skal vera 2 stk. K12 sem nær 500 mm út fyrir op.
Niður úr og upp úr einingum skulu koma K10 vinklar L=1100 mm, c/c 250 mm nema annað komi fram.
Úr veggendum burðareininga komi VS-lykkjur c/c 600



IV-104



IV-105



IV-201

Útgáfa	Breyting	Dagsetning	Hannað
Sveinbjörn Hinriksson Byggingatækniræðingur Kf. 160851-2529 Brekkugötu 6 Hafnarfirði Sími: 555-4008, 861-9851 Netfang: svennih@internet.is		Staður Glitvellir 9 Hafnarfirði	Skýring Veggeiningar
Hannað / Teknað	Kvæði 1:50 1:10	Dagsetning 20.10.22	Verknr. 30-07
			Teikn.nr. 1-07