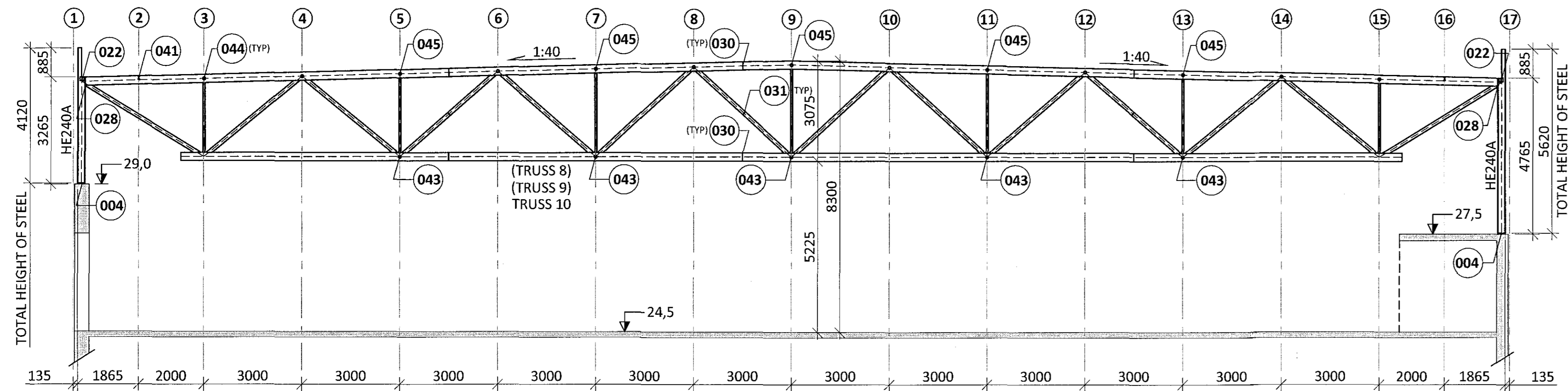
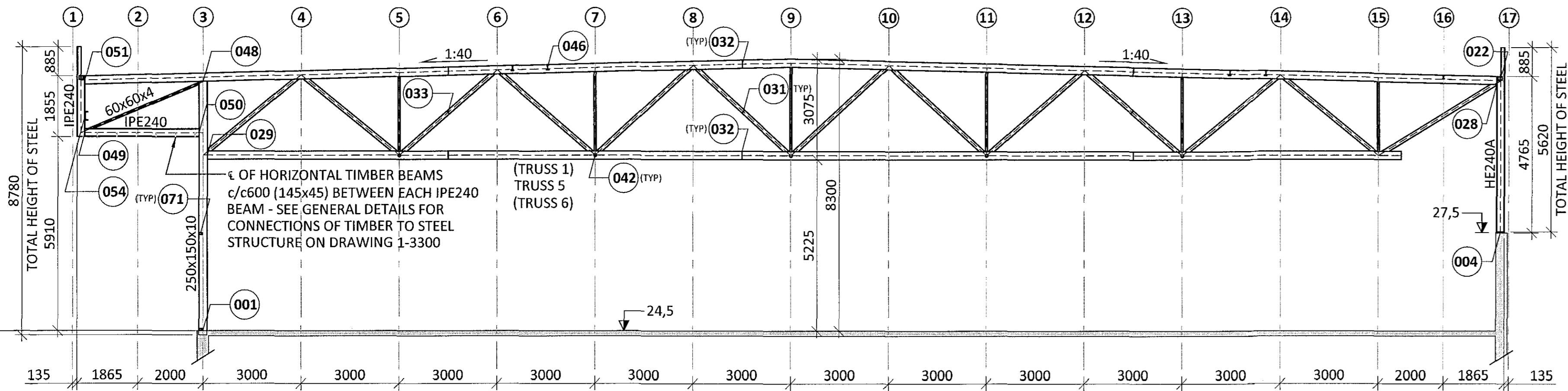


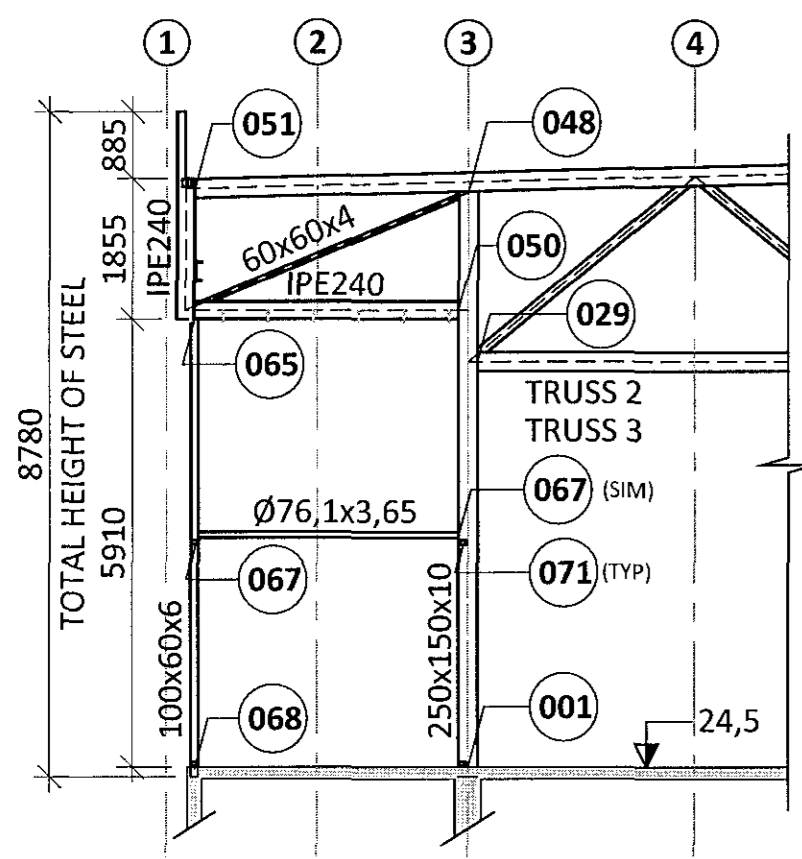
SECTION S1 - SC1:100



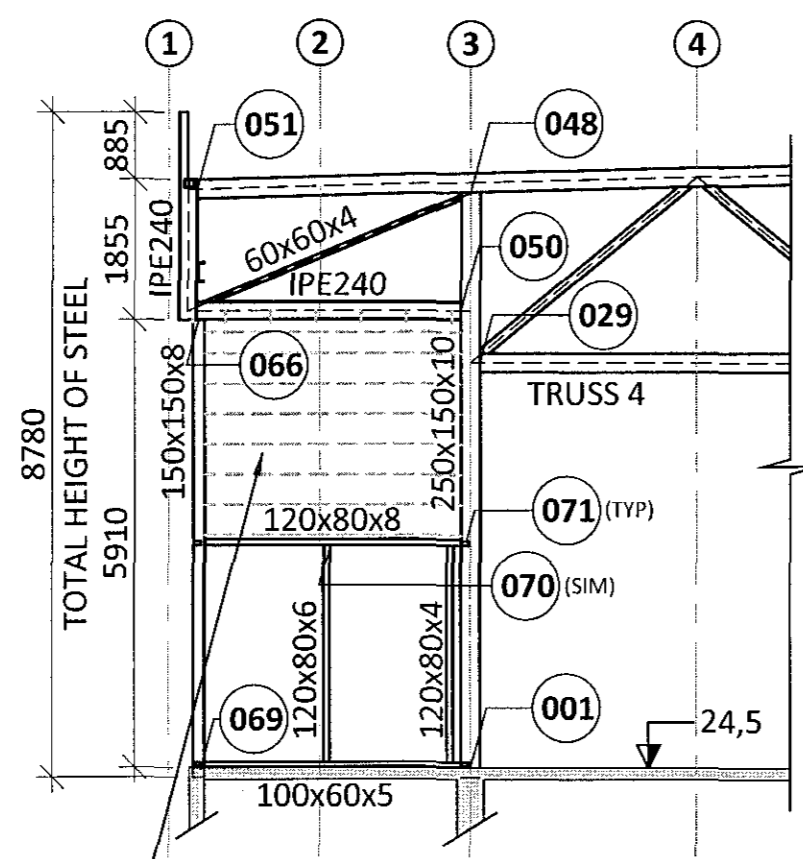
SECTION S2 - SC1:100



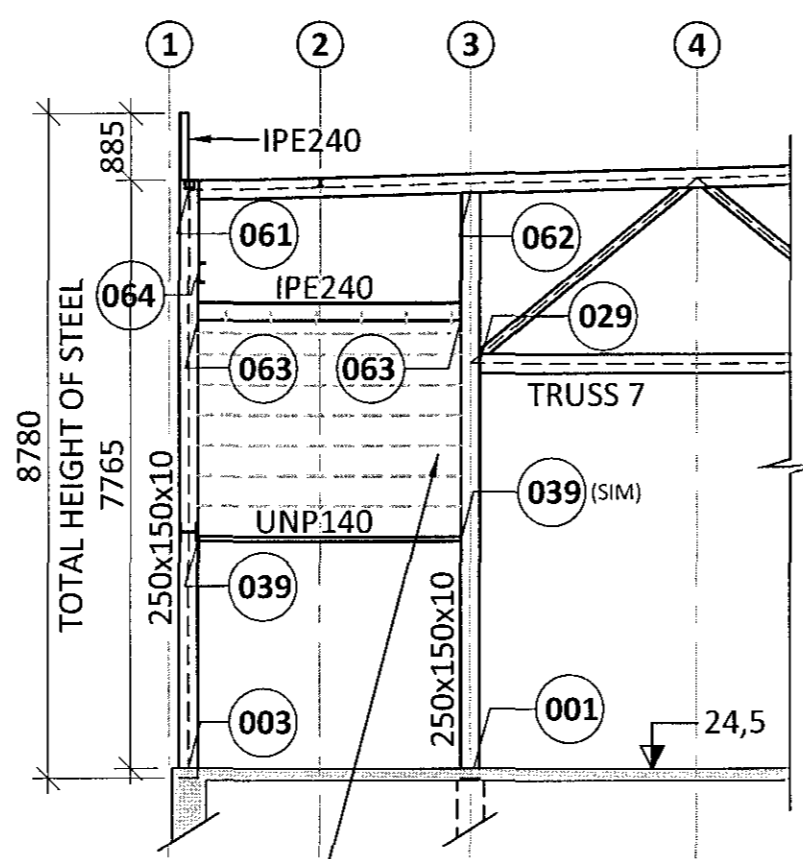
SECTION S3 - SC1:100



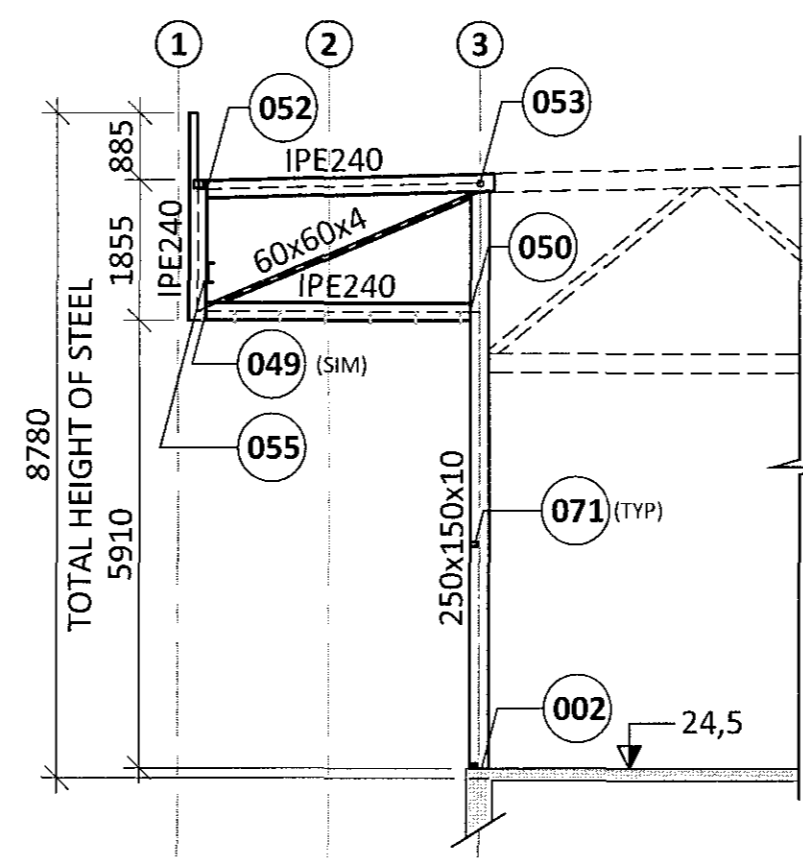
SECTION S4 - SC1:100



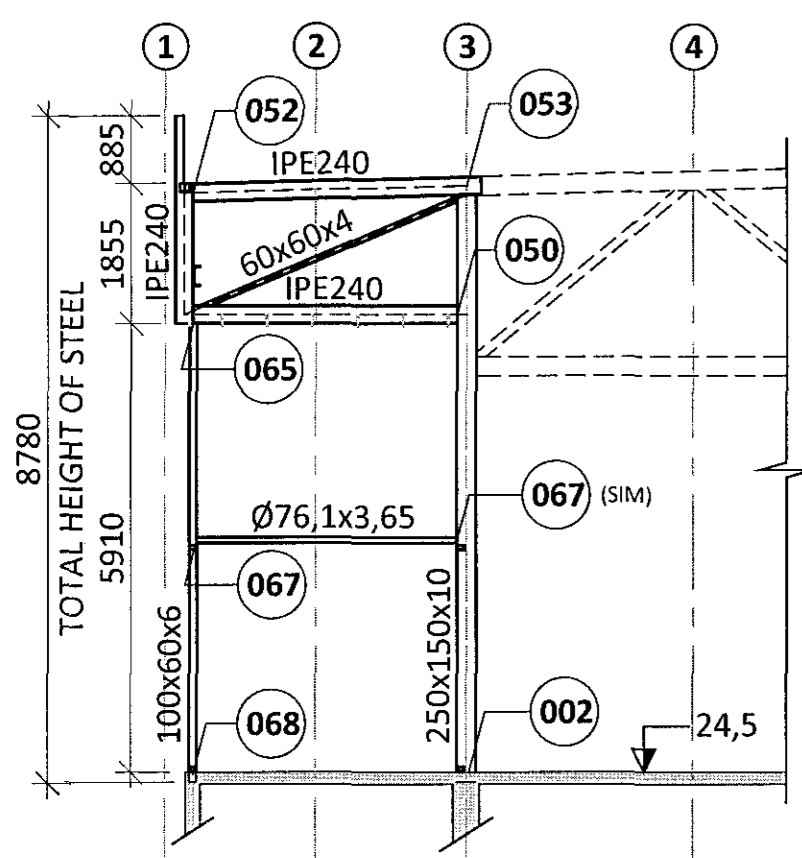
SECTION S5 - SC1:100



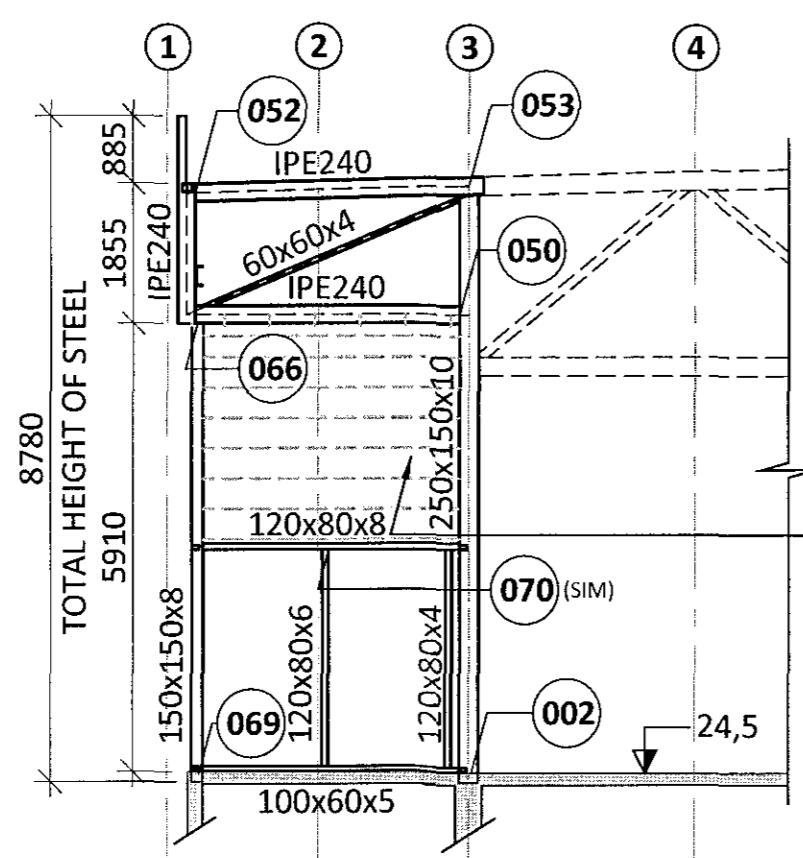
SECTION S6 - SC1:100



SECTION S7 - SC1:100



SECTION S8 - SC1:100



LOWER SIDE OF HORIZONTAL TIMBER BEAMS (145x45) - SEE GENERAL DETAILS FOR CONNECTIONS OF PURLINS TO STEEL STRUCTURE ON DRAWING 1-3300

LOWER SIDE OF HORIZONTAL TIMBER BEAMS (145x45) - SEE GENERAL DETAILS FOR CONNECTIONS OF PURLINS TO STEEL STRUCTURE ON DRAWING 1-3300

LOWER SIDE OF HORIZONTAL TIMBER BEAMS (145x45) - SEE GENERAL DETAILS FOR CONNECTIONS OF PURLINS TO STEEL STRUCTURE ON DRAWING 1-3300

GENERAL NOTES FOR STEEL STRUCTURE:

- SEE DRAWING 1-1100 FOR GENERAL NOTES
- SEE DRAWING 1-3301+ FOR CONNECTIONS

(001), (002) .....

ARITUN AÐALHÖNNUNAR: *[Signature]* 22.09.15

BR.	DAGS.	BREYTING

**ferill**  
VERKFRÆÐISTOFA

**FLATAHRAUN 13** HAFNARFIÖRÐUR  
NÝBYGGING KRÓNUVERSLUN  
STEEL STRUCTURE  
WALLS AND ROOF  
SECTIONS

SAMPYKKT KT. *[Signature]*  
HÖNNUNUR VÍRFRÁRID DAGS. ÚTG. DAGS. BREYTT.  
AK arngrimur@ferill.is HE 09.09.15  
MKV. VERKNR. TEIKN. NR. BREYTT.  
1:100 14048 1 - 3100

Ferill ehf. Mörkin 1 108 Reykjavík Sími: 575 1600 Fax: 575 1601 www.ferill.is