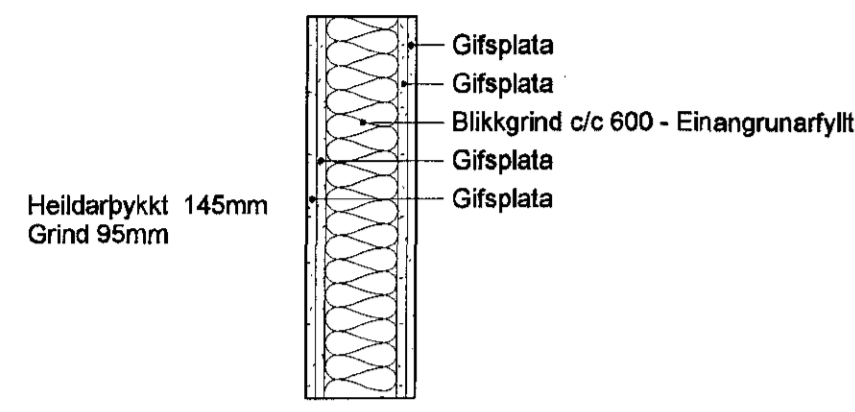
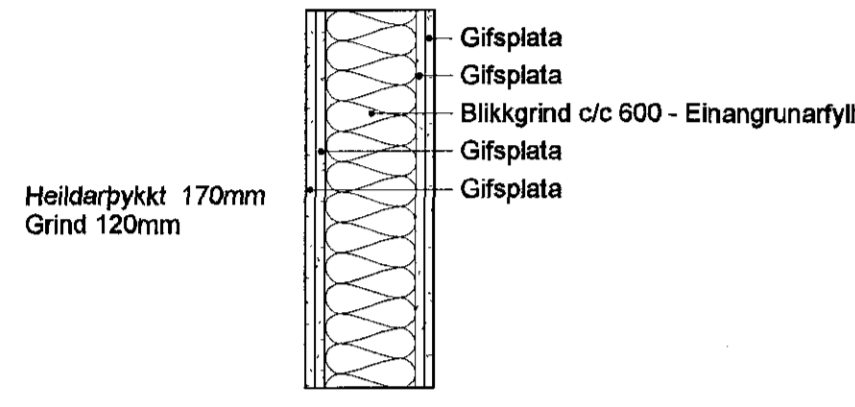


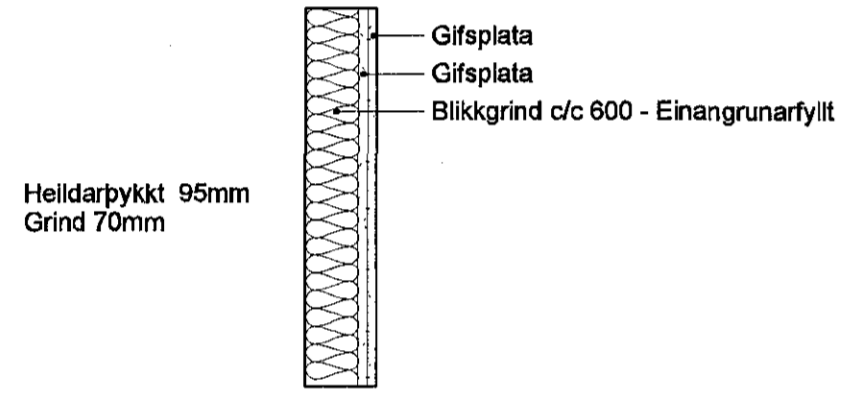
IV-AA



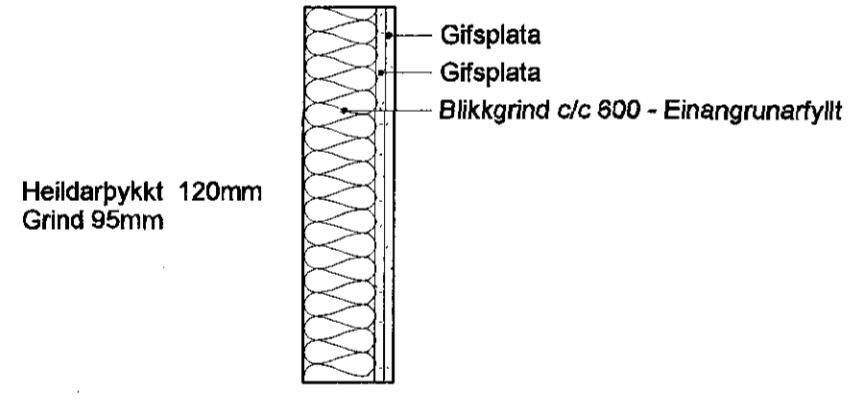
IV-BA



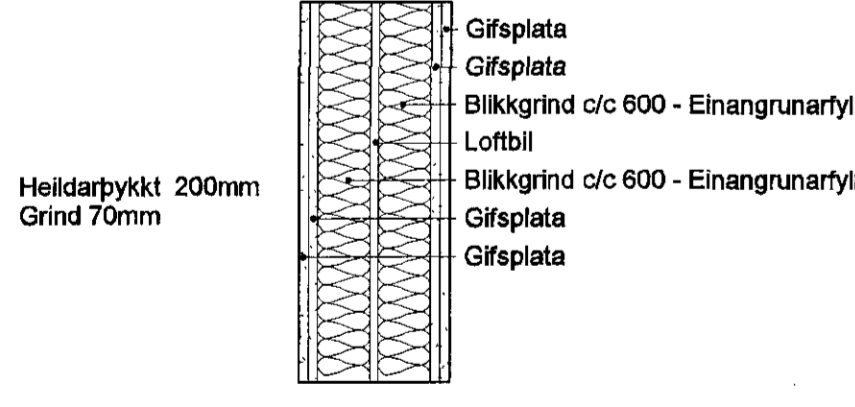
IV-CA



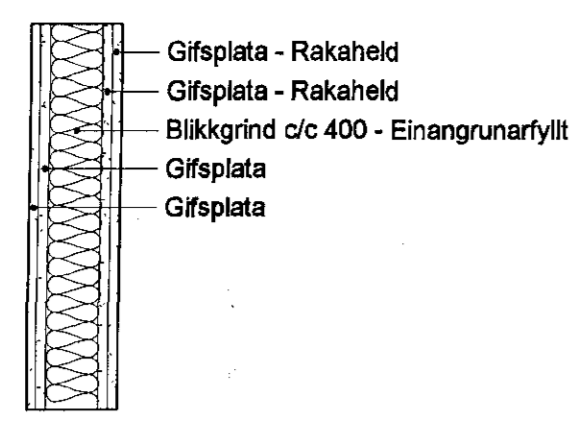
IV-DA



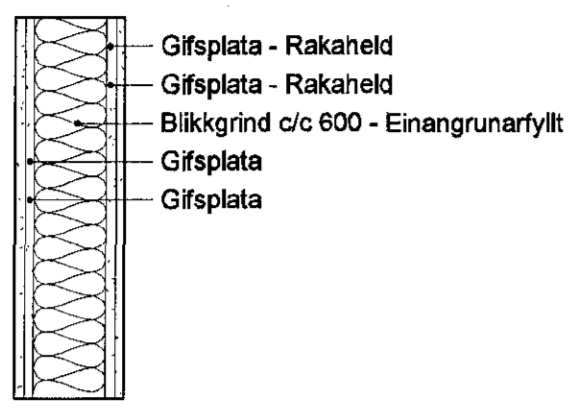
IV-EA



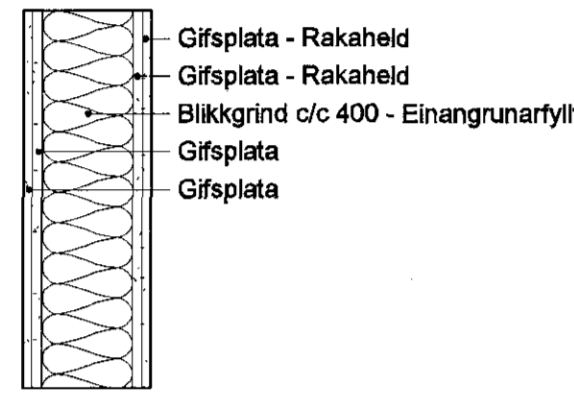
IV-FA



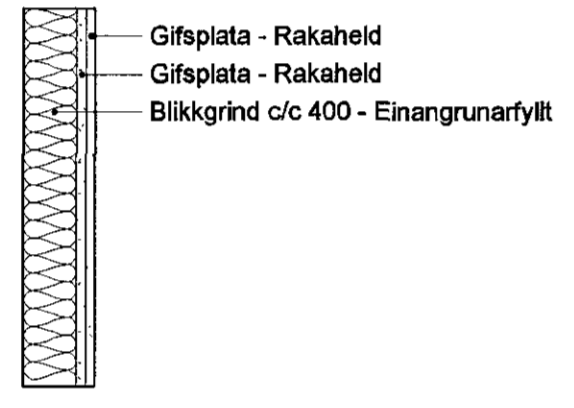
IV-AB



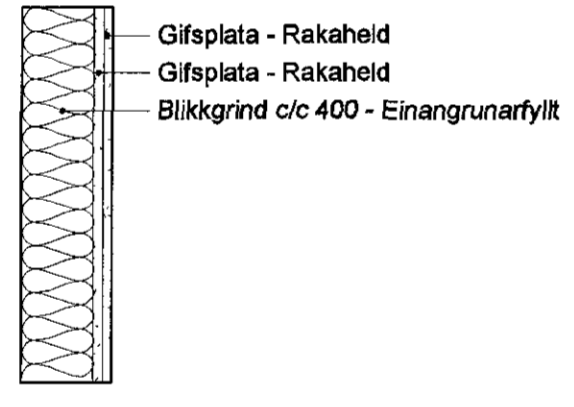
IV-BB



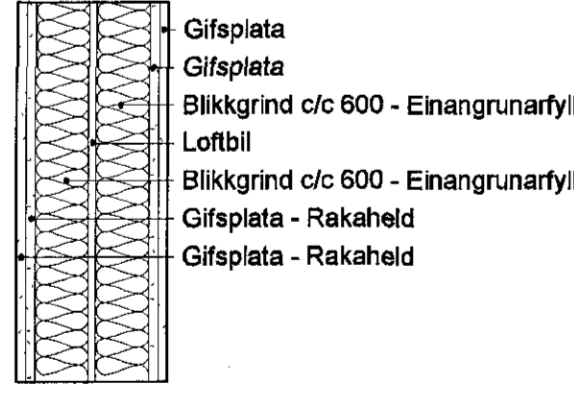
IV-CB



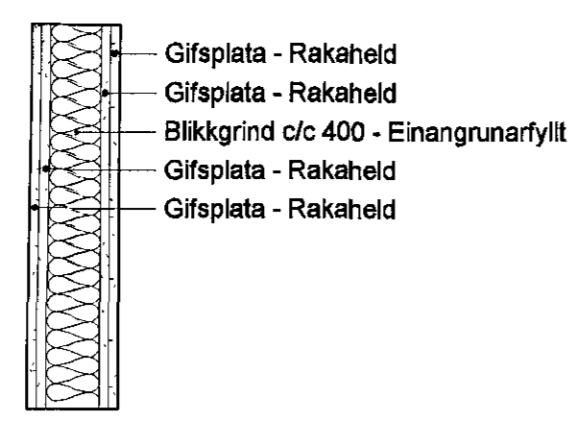
IV-DB



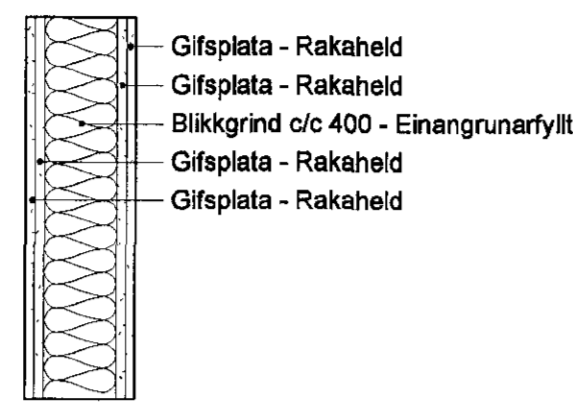
IV-EB



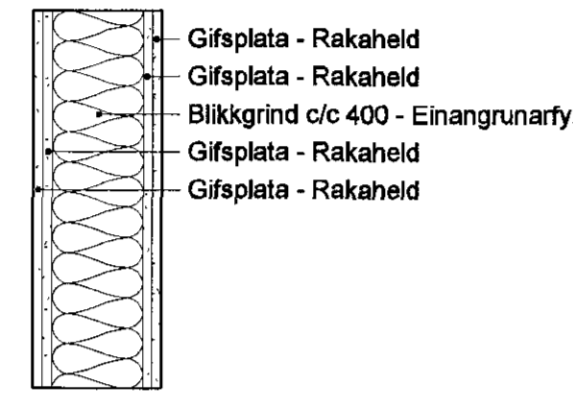
IV-FB



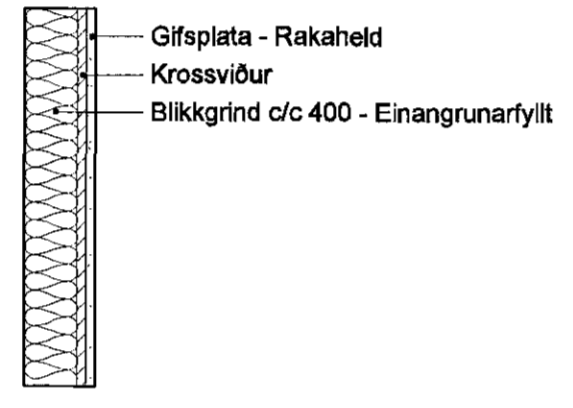
IV-AC



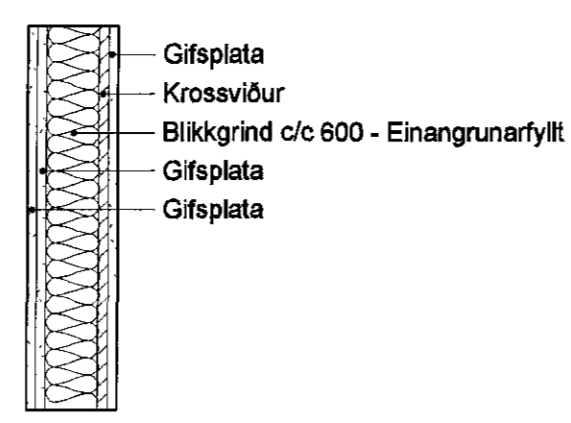
IV-BC



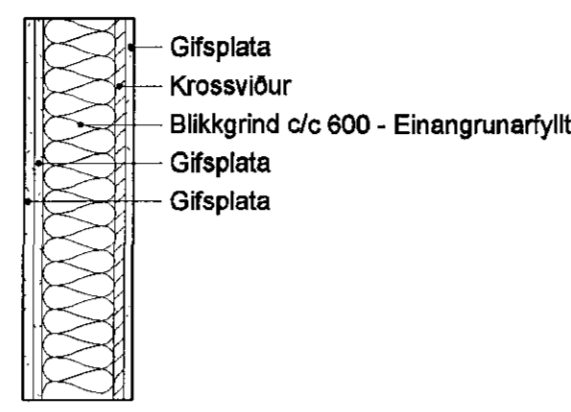
IV-CC



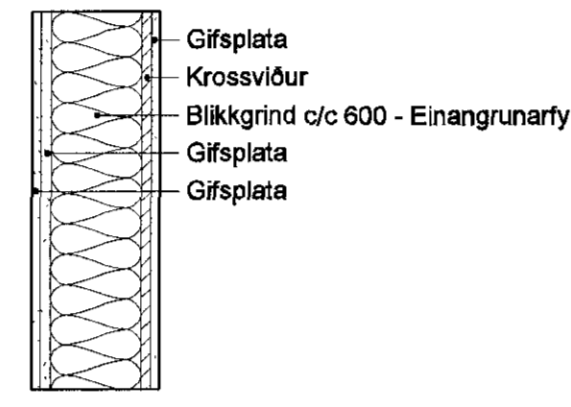
IV-DC



IV-AD



IV-BD



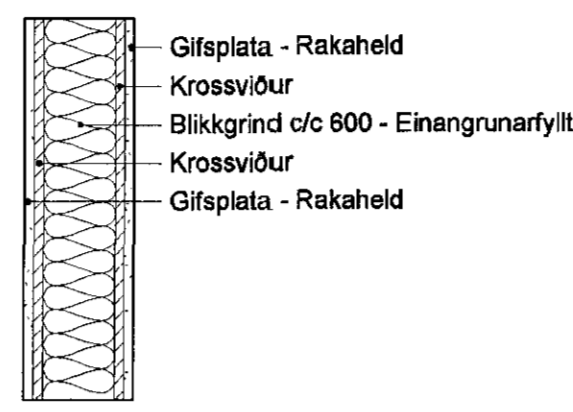
IV-CD



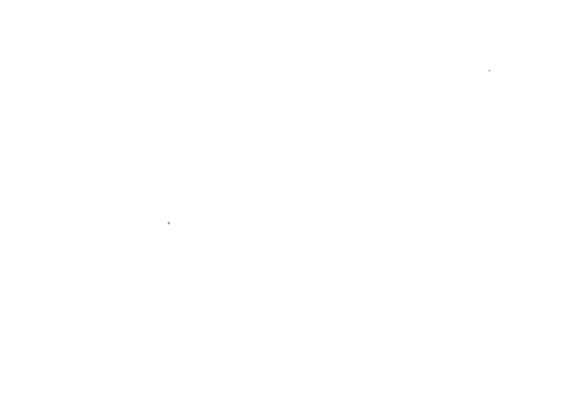
IV-DD



IV-BE



IV-BF



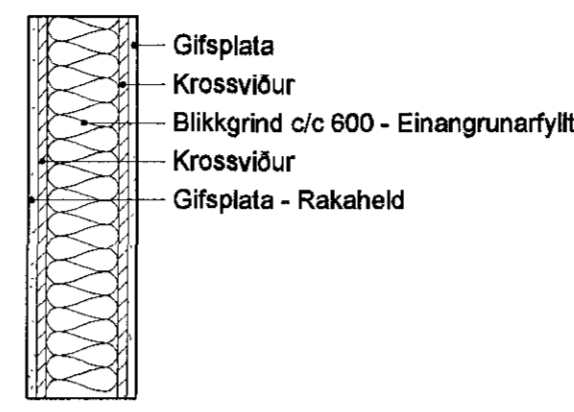
IV-CE



IV-DE



IV-BG



IV-BH



IV-CE



IV-DE

(22) Innveggjafirrit

Auðkenni	Tegund	Mesta brunapól	Mesta hjóðkrafa	Mesta hæð	Athugasemdir
IV-BA	IV-BA - 145_G-13_G-13_BE-95_G-13_G-13	Ei60	R'w 48dB	5400	Almennur gisfvegur
IV-BB	IV-BB - 145_R-13_R-13_BE-95_G-13_G-13	Ei60	R'w 48dB	6300	Rakaheit gífs öðrumegin
IV-BC	IV-BC - 145_R-13_R-13_BE-95_R-13_R-13	Ei60	R'w 48dB	6300	Rakaheit gífs beggia vegna
IV-BE	IV-BE - 145_R-13_K-13_BE-95_K-13_R-13	Ei60	R'w 48dB	5400	Krossviður sem innra lag beggia vegna
IV-BF	IV-BF - 145_G-13_K-13_BE-95_K-13_R-13	Ei60	R'w 48dB	5400	Krossviður sem innra lag beggia vegna
IV-CB	IV-CB - 170_R-13_R-13_BE-120_G-13_G-13	Ei60	R'w 48dB	7700	Rakaheit gífs öðrumegin
IV-DA	IV-DA - 95_G-13_G-13_BE-70	Ei30	R'w 30dB	2500	Almennur veggur við lagnastokka
IV-DC	IV-DC - 95_R-13_K-12_BE-70	Ei30	R'w 30dB	2700	Veggur við lagnastokka með rakaheid gífsi
IV-FA	IV-FA - 200_G-13_G-13_BE-70_L-10_BE-70_G-13_G-13_2	Ei60	R'w 48dB	5400	Tvöfaldur gisfvegur með loftbili
IV-XX	Felliveggs stubbur	Ei60	R'w 48dB	5400	Almennur gisfvegur

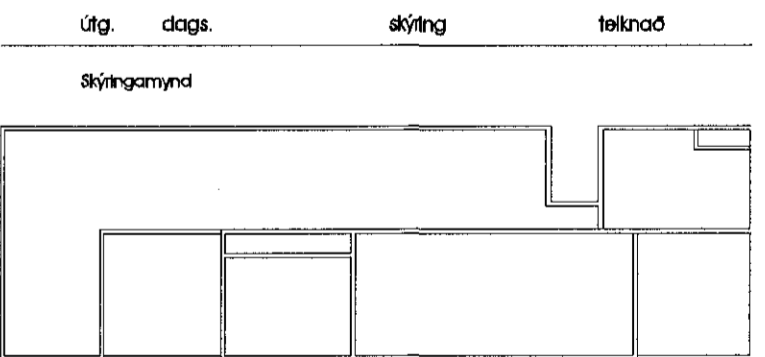
Almennar skýringar.
Allur frágangur gisfveggja skal vera í samræmi við leiðbeiningar framleiðanda að teknu tilliti til bruna og hjóðkrafa fyrir viðkomandi vegg.

Allar gífs- og krossviðarpólur skulu vera 13mm þykkar.

Öll einangrun innvegga skal vera steinullareinangrun, 32 kg/m³.

Nota skal þykkari blíkstoðir (kamstoðir) og timburstoðir við op sem mynda hurðar- og gluggagöf.

Sjá teikningar:
(22) 5.01 Deili í gisfvegg



Safnaðarheimili Ástjarnarkirkju

Heimilisfang:	KIRKJUELLIR 1
Svefnstíðing:	HAFNARFJÓRÐUR
Vestur:	HLETTARVINGAR
Stíðingarskipti:	INNVEGGJAFIRFIT
Íbúnað / teiknað:	Dag. / Sta.
Yfirskild / samþykkt:	qbj / bfg
Maðalfvæði:	1 : 10
Staðsetning:	1400-1-50650010
Landnúmer:	197735
Netfang:	hl.161161@2769
Arnar Þór Jónsson:	hl.010124-4819
Björg Helgadóttir:	hl.22060-4889
Ólafur Guðmundsson:	hl.170174-3089
Egill Guðmundsson:	hl.20102-8669
Þorvaldur L. Þorgeirsson:	hl.220622-3529
Stjórnun og ábyrgð:	www.arkis.is
Netfang:	netfang@arkis.is
Netfang:	netfang@arkis.is

(22) Innveggjafirrit

1 : 10

dagsetning: 01.09.2016
vettir: 14.050
arkitektar (22)4.01
teikning