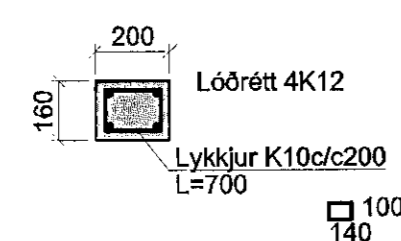
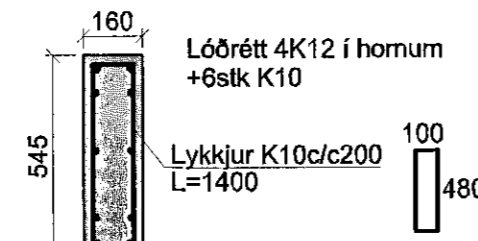


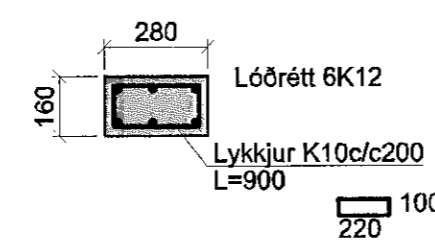
S30 1:20



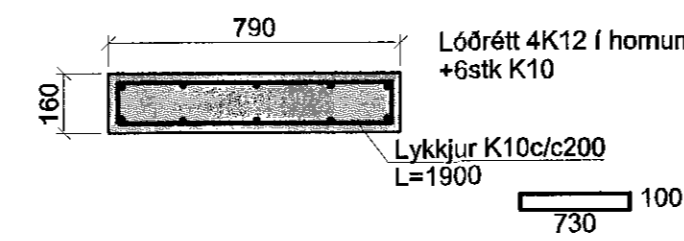
S31 1:20



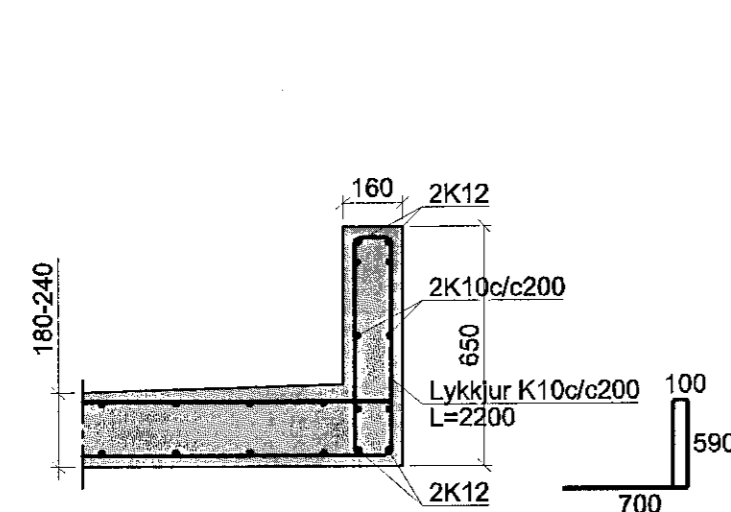
S32 1:20



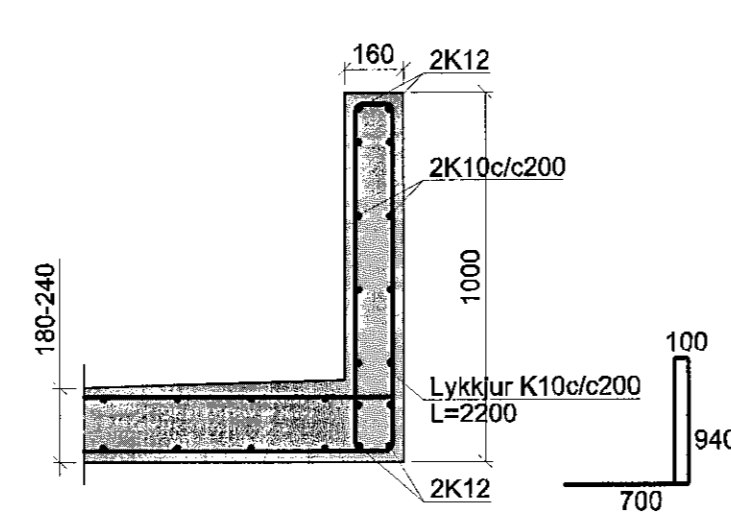
S33 1:20



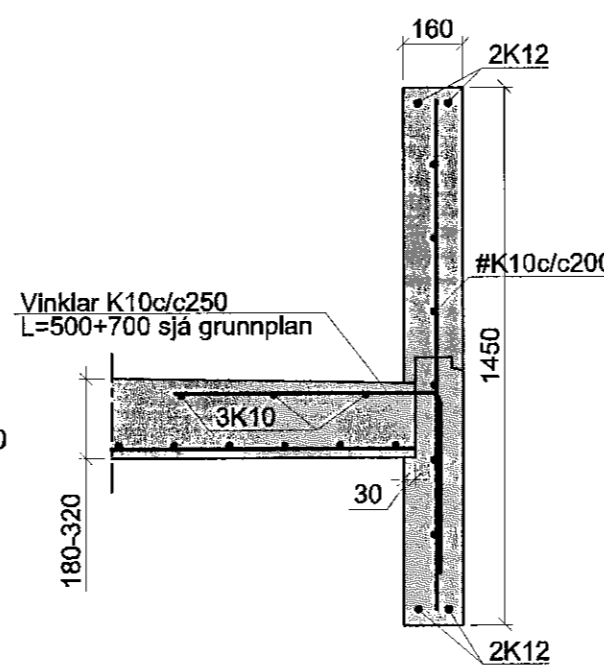
Þ30 1:20



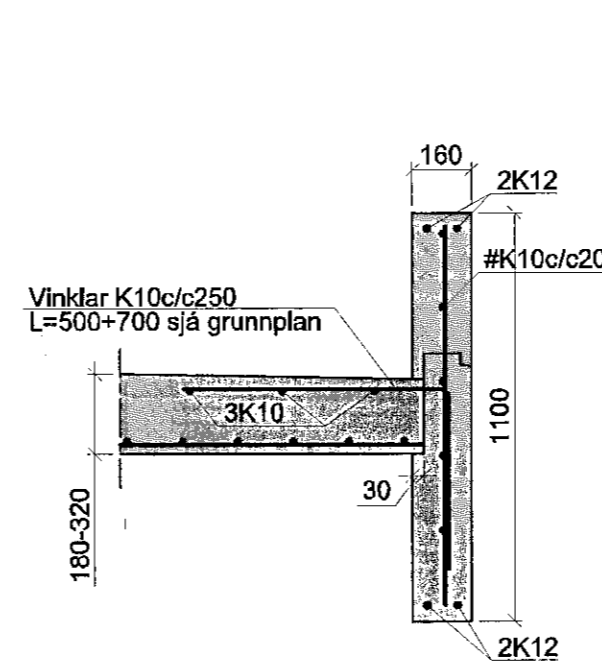
Þ31 1:20



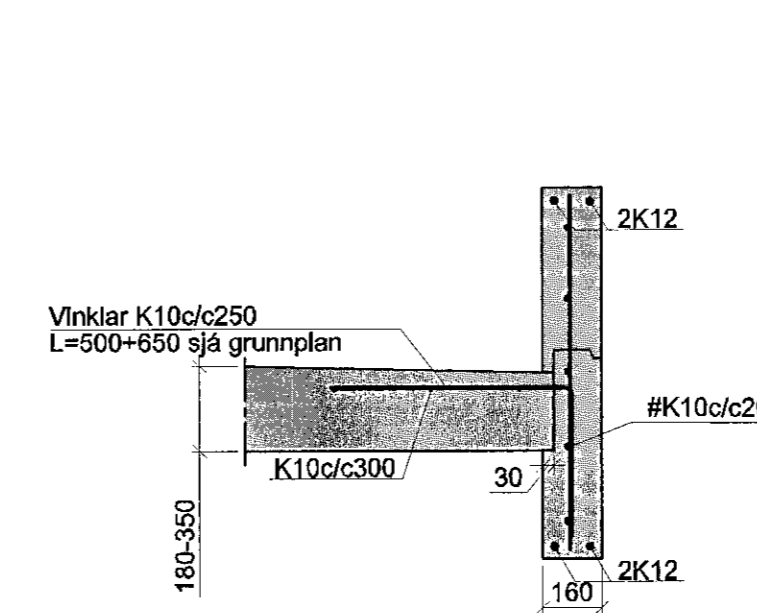
Þ32 1:20



Þ33 1:20



Hæðaskil 1:20



Steypa C25.  
Sement > 300 kg/m<sup>3</sup>, vatnsementstala (v/s) < 0.55,  
loftinnihald 5-6%, signdál 60-100mm.  
Steypa og steypustyrktarstál B500C kv. IST EN 1992-1-1, IST EN  
206, IST EN 13670, IST 16 og IST EN 10080.  
Steypuhúla á járnun: veggir úti 30mm  
veggir inni 20mm  
plötur úti 30mm  
plötur inni 20mm  
bitar 25mm  
Meðfram dyrum, gluggum og opum komi 2K12, er náð  
minnst 600mm. út fyrir brúnnir opa.  
A: merkir 2K10c/c500, L=1500mm, í efri og neðri brún plötu.  
Hálfnum og framkvæmd verkefna skal vera í samræmi við  
gildandi staða og reglugerðir.

|            |                         |  |                 |
|------------|-------------------------|--|-----------------|
| Breytingar | <b>KIRKJUVELLIR 12a</b> |  |                 |
| Nr.        | Dags.                   | Nafn                                       | H.BS   T.HS   S |
|            |                         | <b>Verkfæðistofa Þráinn &amp; Benedikt</b> | M. 1:20         |
|            |                         | Laugavegi 178, 105 Rvk                     | Nr. <b>B302</b> |
|            |                         | Sími: 568-7775 Vefang: verkfaedistofa.is   | Dags. apr '16   |
|            |                         | Nefang: verkfaedistofa@verkfædistofa.is    | 080149-3809     |
|            |                         | Burðarvirki veggir og plötur 2016          |                 |
|            |                         | 3.hæðar snið                               |                 |
|            |                         | Áritun<br>aðalhönnuðar:                    |                 |