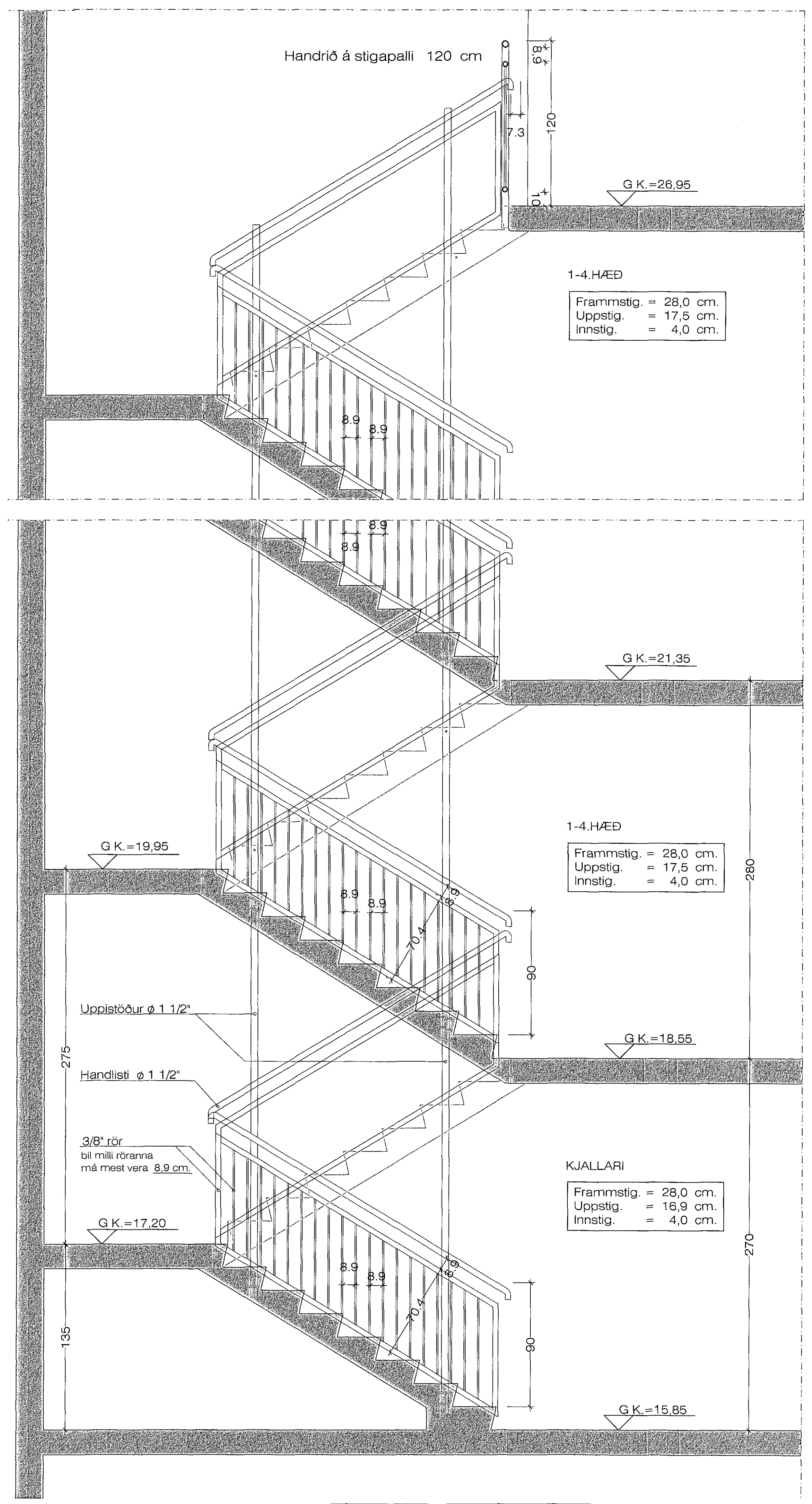
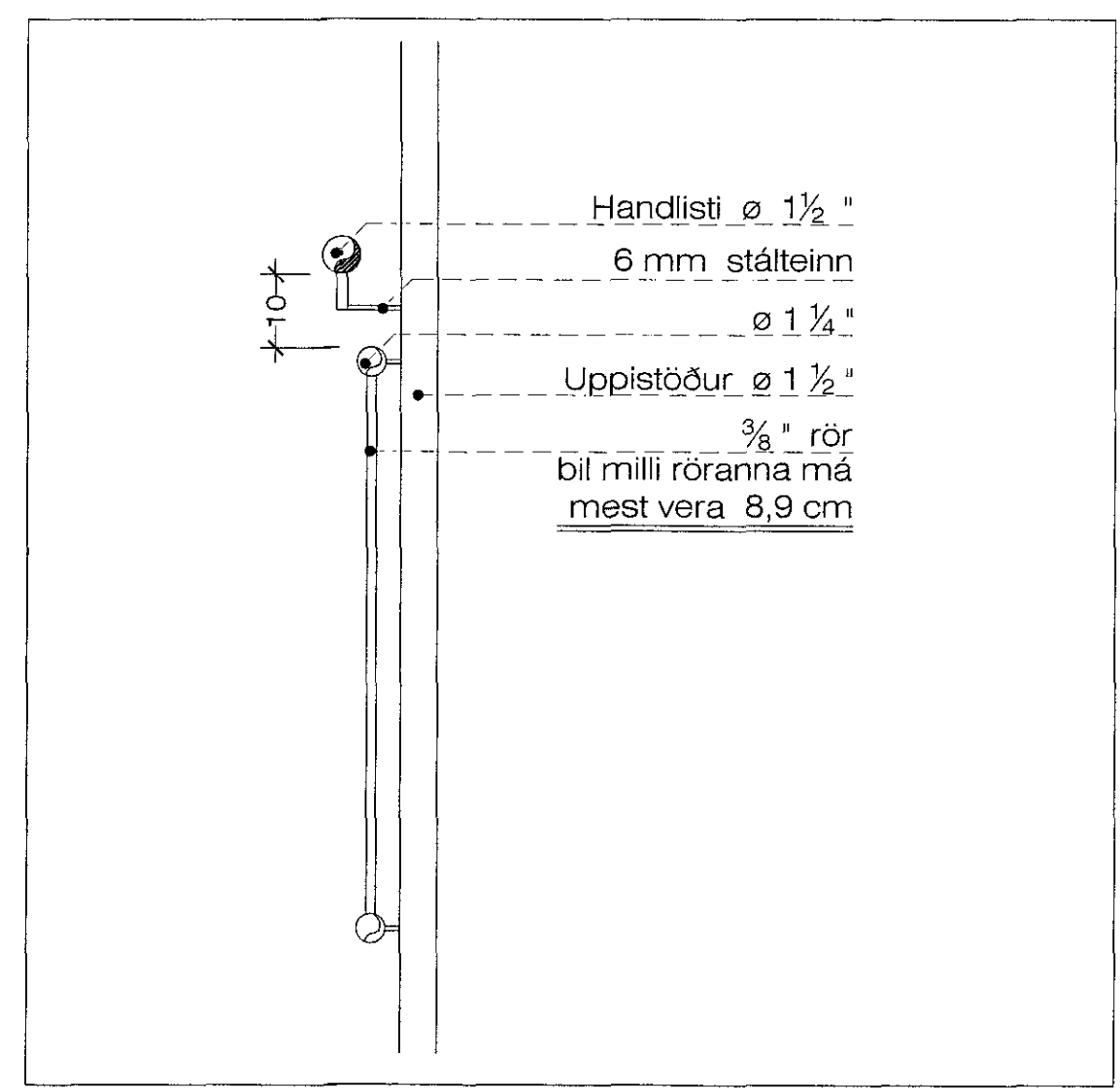


27.10.16/1610410

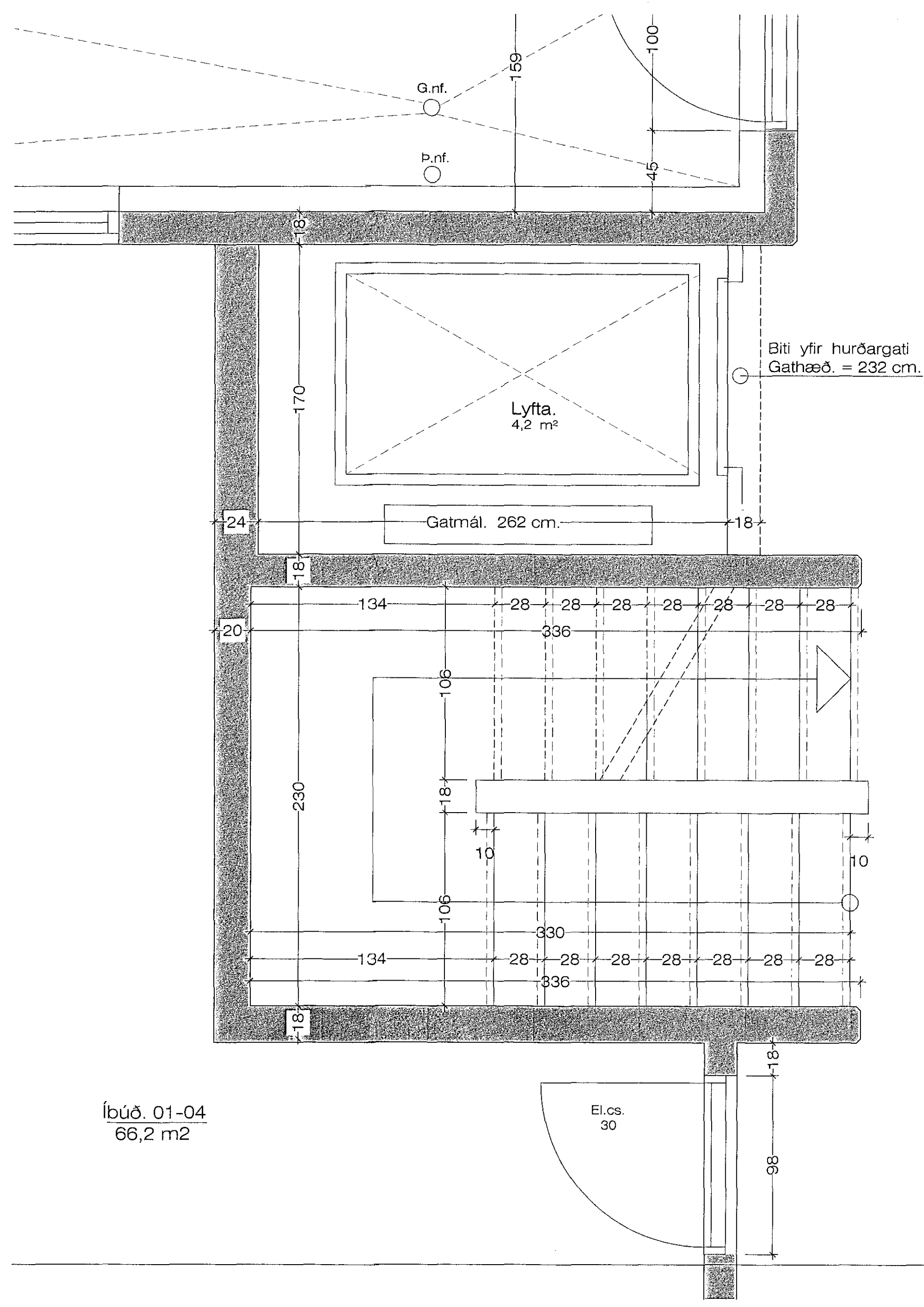


Sneiðing í stigahús. 1:20

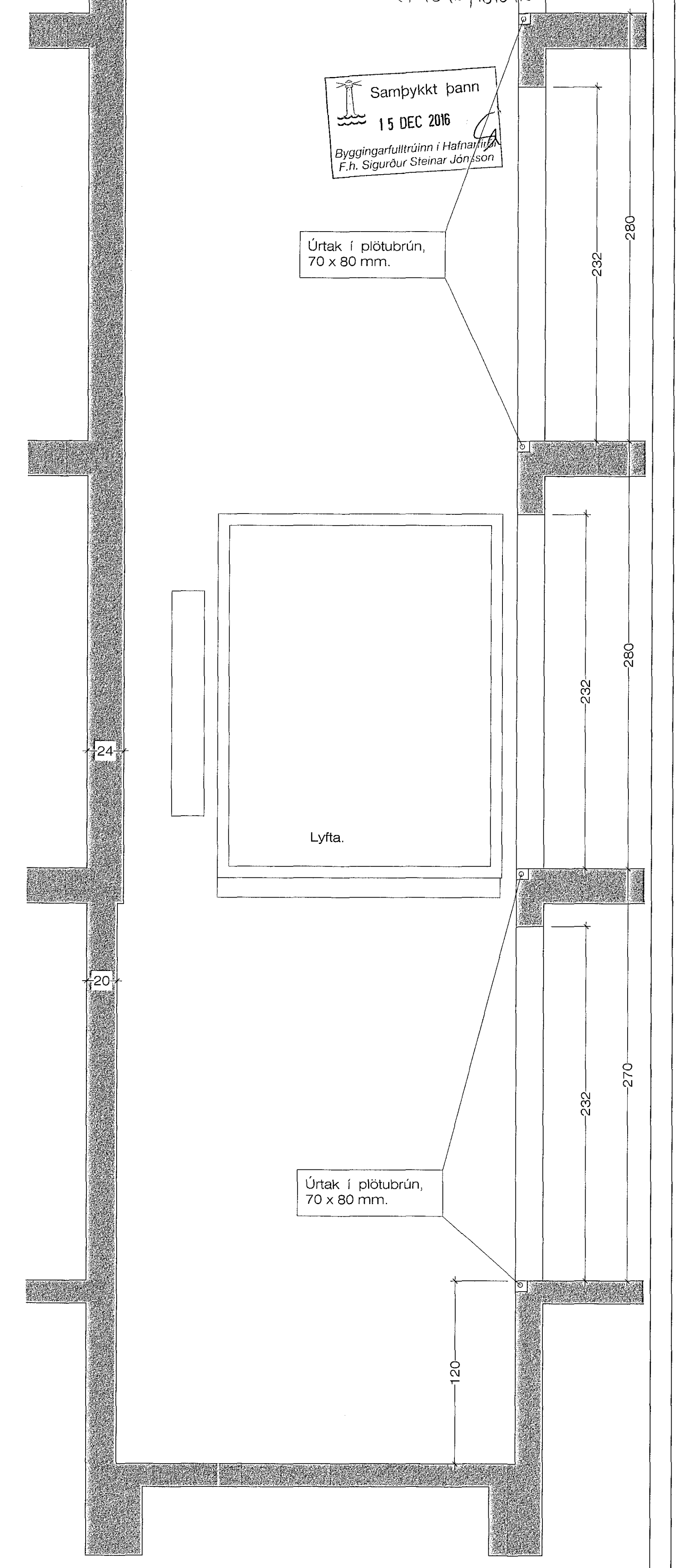
Athuga skal öll mál á handriði, nákvæmlega á staðnum, áður en smíði hefst.



Handrið hlutamýnd 1:10



Grunnmýnd af stigahúsi. 1:20



Sneiðing í Lyftustokk. 1:20

JonG 20.10.2016 11:39 Einivellir 3 2002.dwg