

inddyri

Stigapallur  
11,2 m<sup>2</sup>

irými  
m<sup>2</sup>

Svalir  
258,9 m<sup>2</sup>

Fundarherbergi  
16,7 m<sup>2</sup>

Mótsstjórn  
9,4 m<sup>2</sup>

Geymsla  
6,5 m<sup>2</sup>

VS ko.  
3,1 m<sup>2</sup>

VS ko.  
3,1 m<sup>2</sup>

VS ko.  
3,6 m<sup>2</sup>

VS ko.  
3,6 m<sup>2</sup>

Gangur  
65,4 m<sup>2</sup>

VS ko.  
3,7 m<sup>2</sup>

VS ko.  
3,7 m<sup>2</sup>

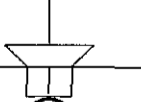
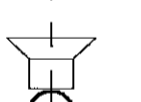
VS ko.  
3,1 m<sup>2</sup>

VS ko.  
3,1 m<sup>2</sup>

REL120

REL120

Cat6 + 2para hjóðstengur



Two-way Active speaker system  
12\*1.5(3VC) 1100W

Two-way Active speaker system  
12\*1.5(3VC) 1100W

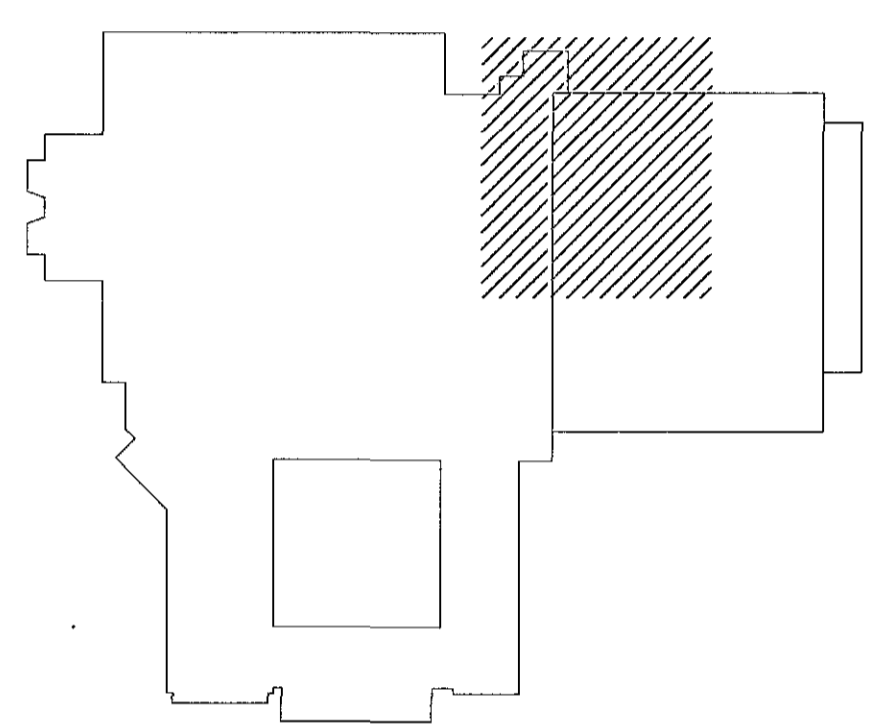
Duble 18" Bass Reflex Active  
Subwoofer 1100W

Duble 18" Bass I  
Subw

Pro Grade Classic XKE 1par

Pro Gra

bassabox



HÖNNUNARSTJÓRI  
ASK  
21. des. 2016  
Hl. H. H. H.

TEKNIÞJÓNUSTAN SP  
Lágmúla 5 - 108 Reykjavík  
Sími: 3844 gsm. 398 0723  
e-mail: audunur@tth.is  
Audunur  
250250-3889

Þróttamiðstöð Hauka  
Grunnmynd 2.hæðar, svæði 1  
Hljóðkerfi  
Rafagnateikning

Hannað: AK	Dags: 15.12.16
Tekni: AK	Yfirfarið:
Kvartí: 1:50	Bláð:
Nr.: 1618211	AF:

Dr. Dags. Breyting