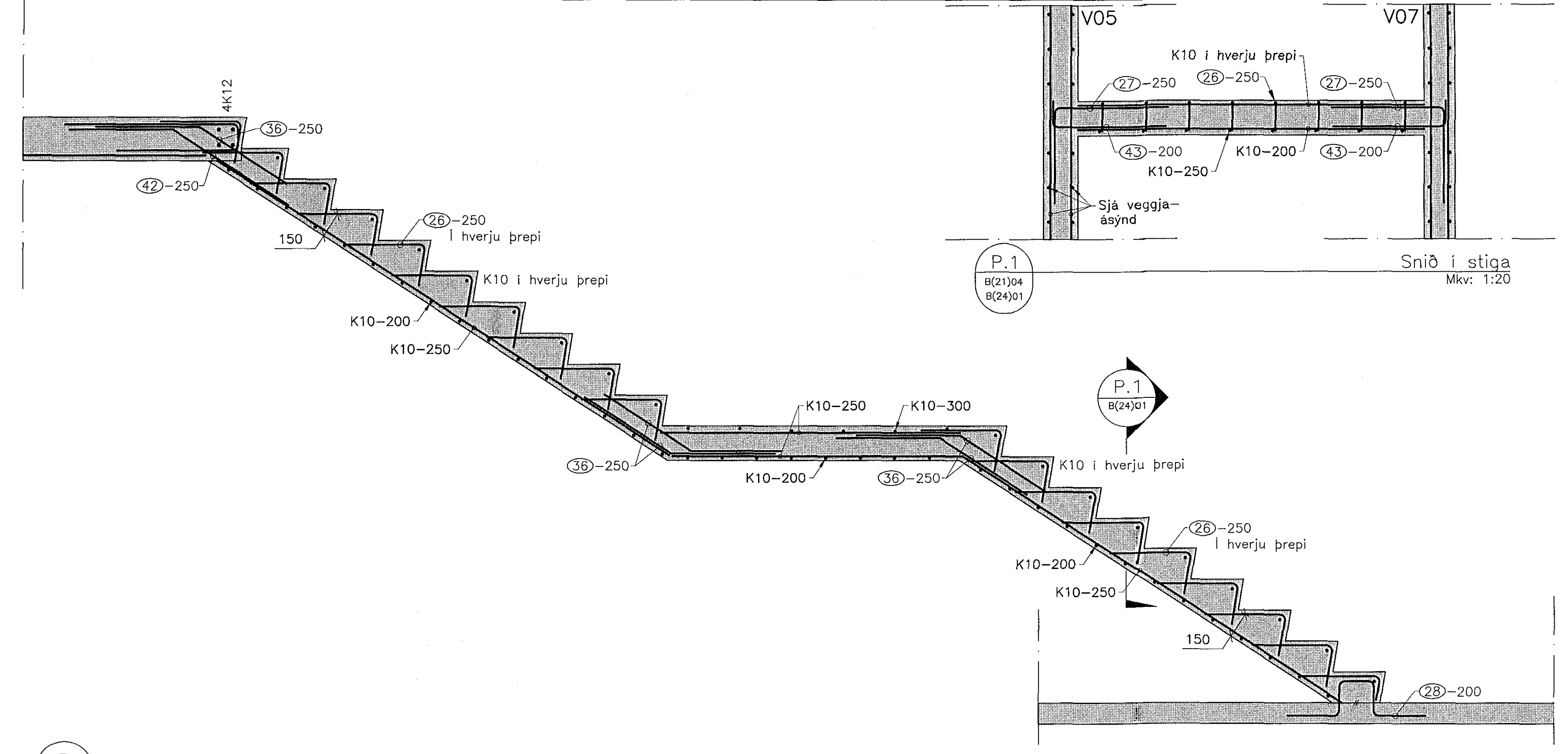


Samykktt þann  
20 JAN 2017  
Byggingarfulltrúinn í Hafnarhúsi  
F.h. Sigurður Steinar Jónsson

Antun samræmingarþinnu:

Skýringar:

4	K10-L=1400	730	500
26	K10-L=700	460	500
27	K10-L=1200	650	550
28	K10-L=1200	200	300
29	K10-L=Br.	500	500
36	K10-L=1200	600	600
37	K10-L=1900	600	1300
42	K10-L=1300	500	800
43	K10-L=800	150	650

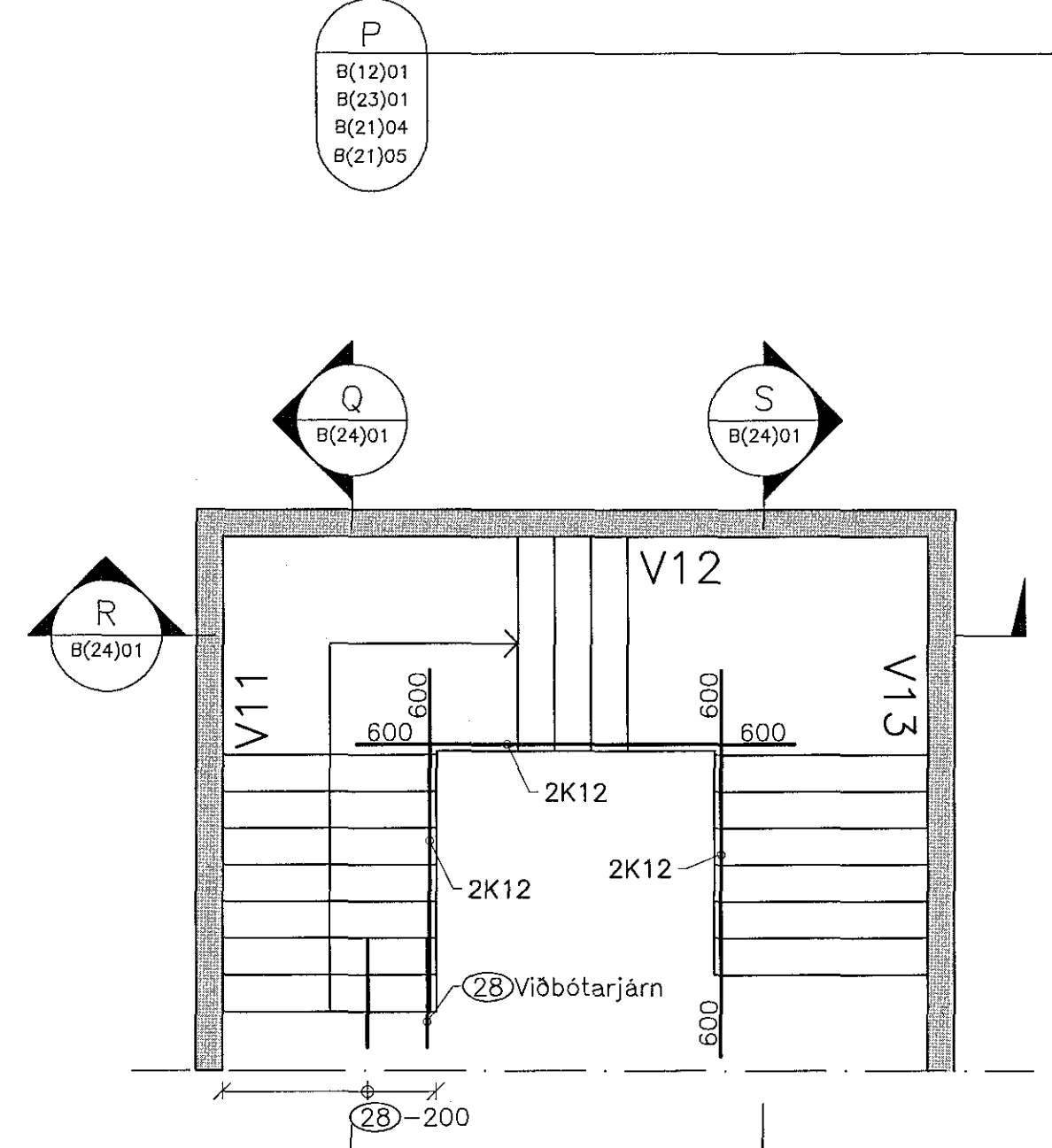


Snið i stiga Mkv: 1:20

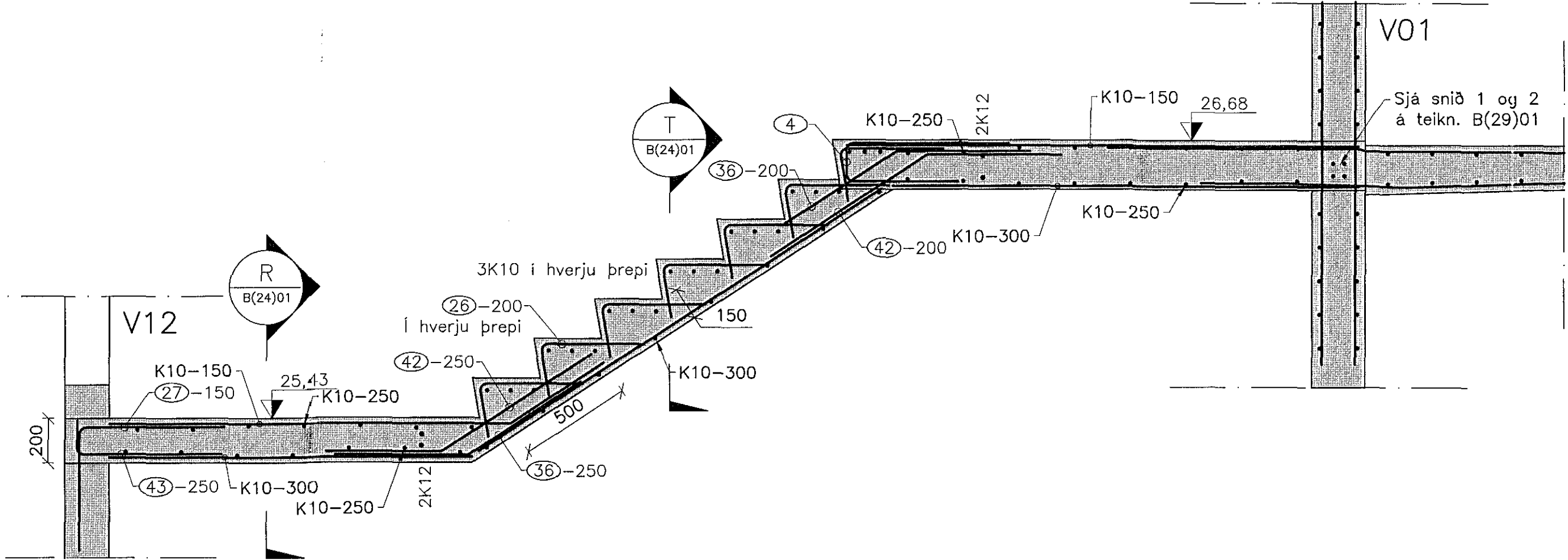
P.1 B(21)04 B(24)01

P.1 B(24)01

Stigi Mkv: 1:20



Grunnmynd stiga Mkv: 1:50

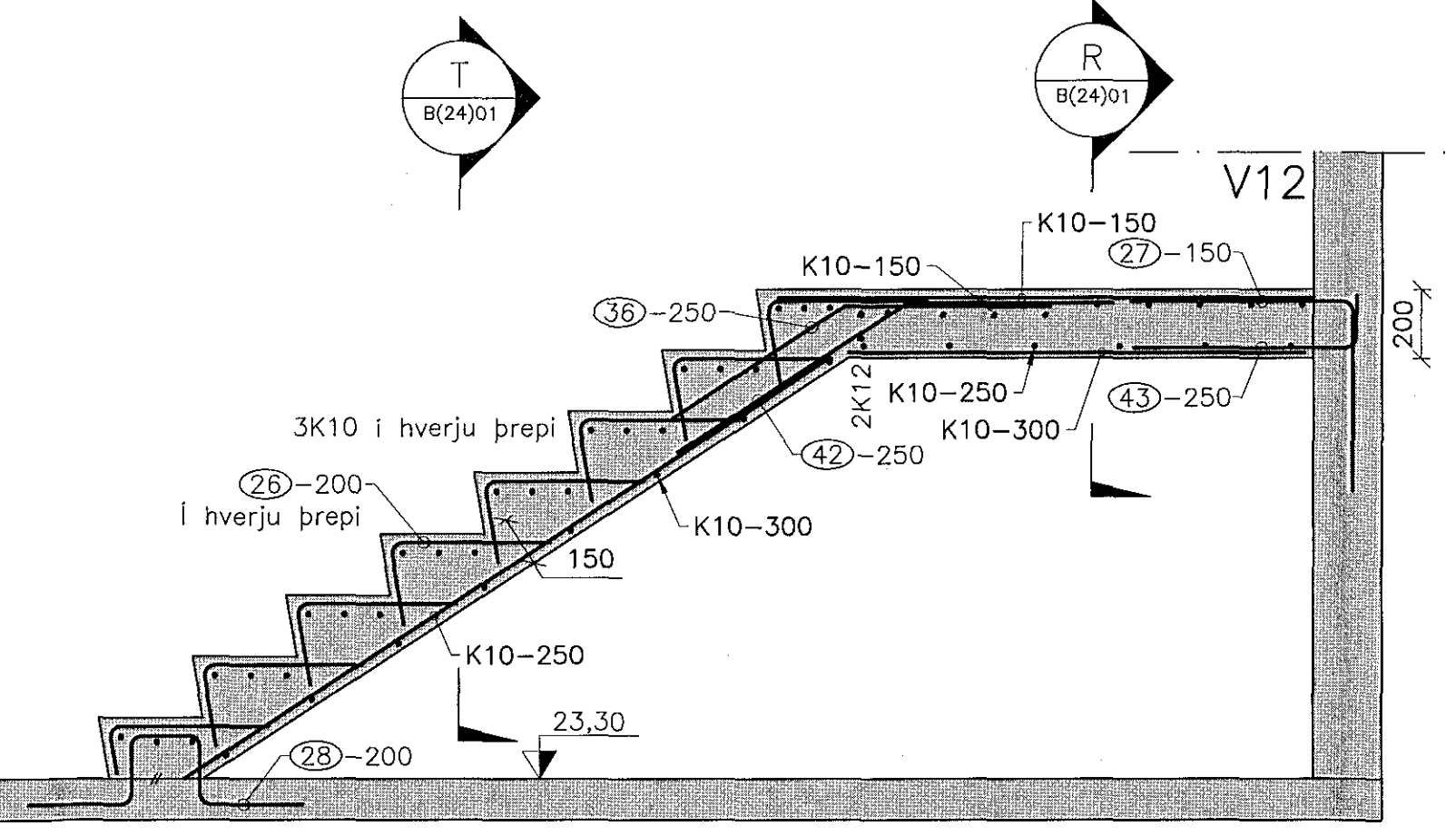


Snið i stiga Mkv: 1:20

S B(21)06 B(23)01 B(23)02 B(24)01

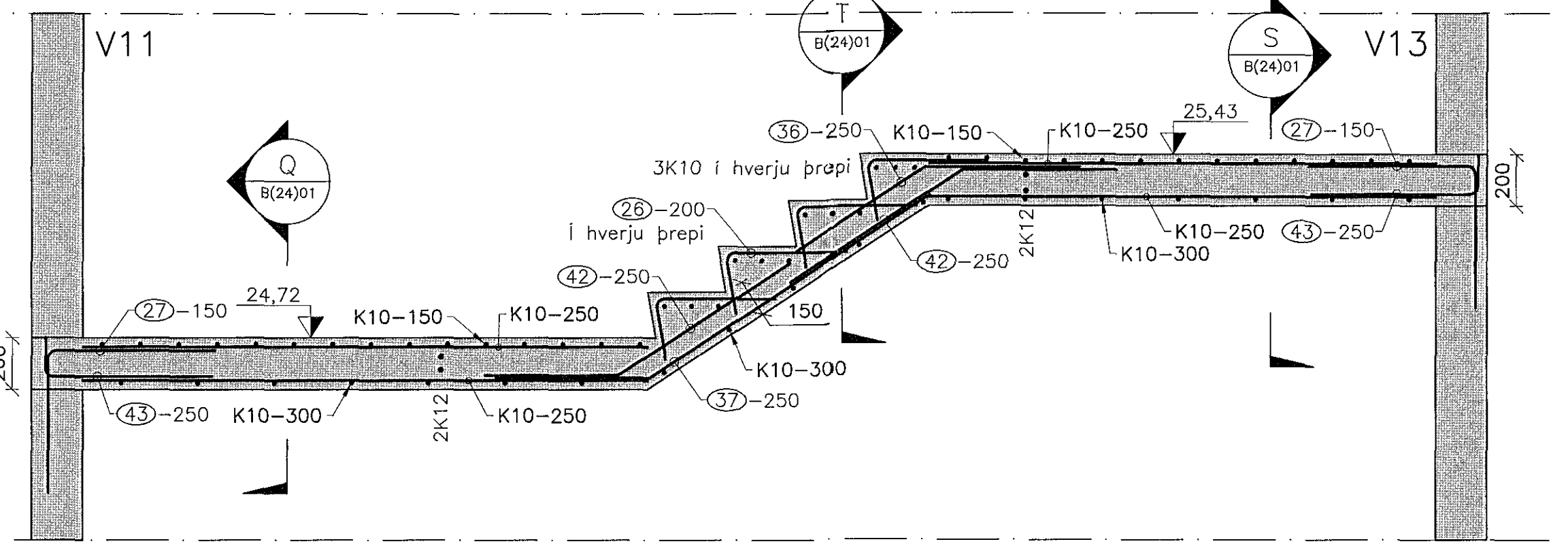
T B(24)01

S B(24)01



Snið i stiga Mkv: 1:20

Q B(12)01 B(21)06 B(24)01

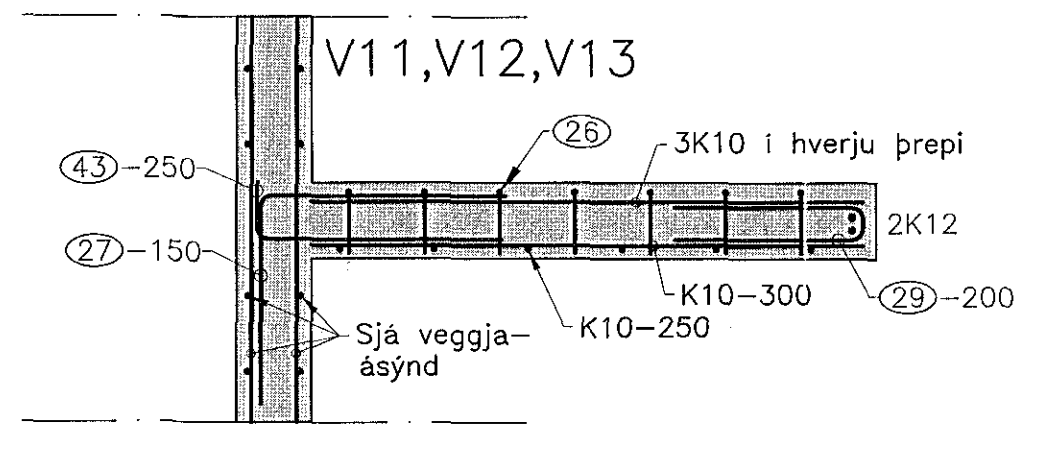


Snið i stiga Mkv: 1:20

R B(21)06 B(23)01 B(23)02 B(24)01

T B(24)01

Q B(24)01



Snið i stiga Mkv: 1:20

T B(24)01

21. des. 2016  
Hilber Þórunn Þorvaldsson

1	Framkvæmdartekning	15.12.16	HJE
Δ	Breytingar:	Dags:	Hö:

**HNIT**  
VERKFRÆÐISTOFA  
Hæðisbráut 58-60  
108 Reykjavík  
Sími: 570-0500  
Fax: 570-0503  
www.hnit.is

Hanna: AMG Teikna: JBG Málfrá: HJE  
Tölvuskýli: B(24)01 STIGAR.DWG  
Kl.: 1311625479 Dags: 15.12.2016  
Samþykkt: *Hilber Þórunn Þorvaldsson*

Ásvellir, Íþróttamiðstöð Hauka Salur 2

Burðarþol Stigar

Verk nr.: 16229 Framt. blað: A1 Tekn. nr.: Útg.:  
Mkv: 1:20 **B(24)01 1**